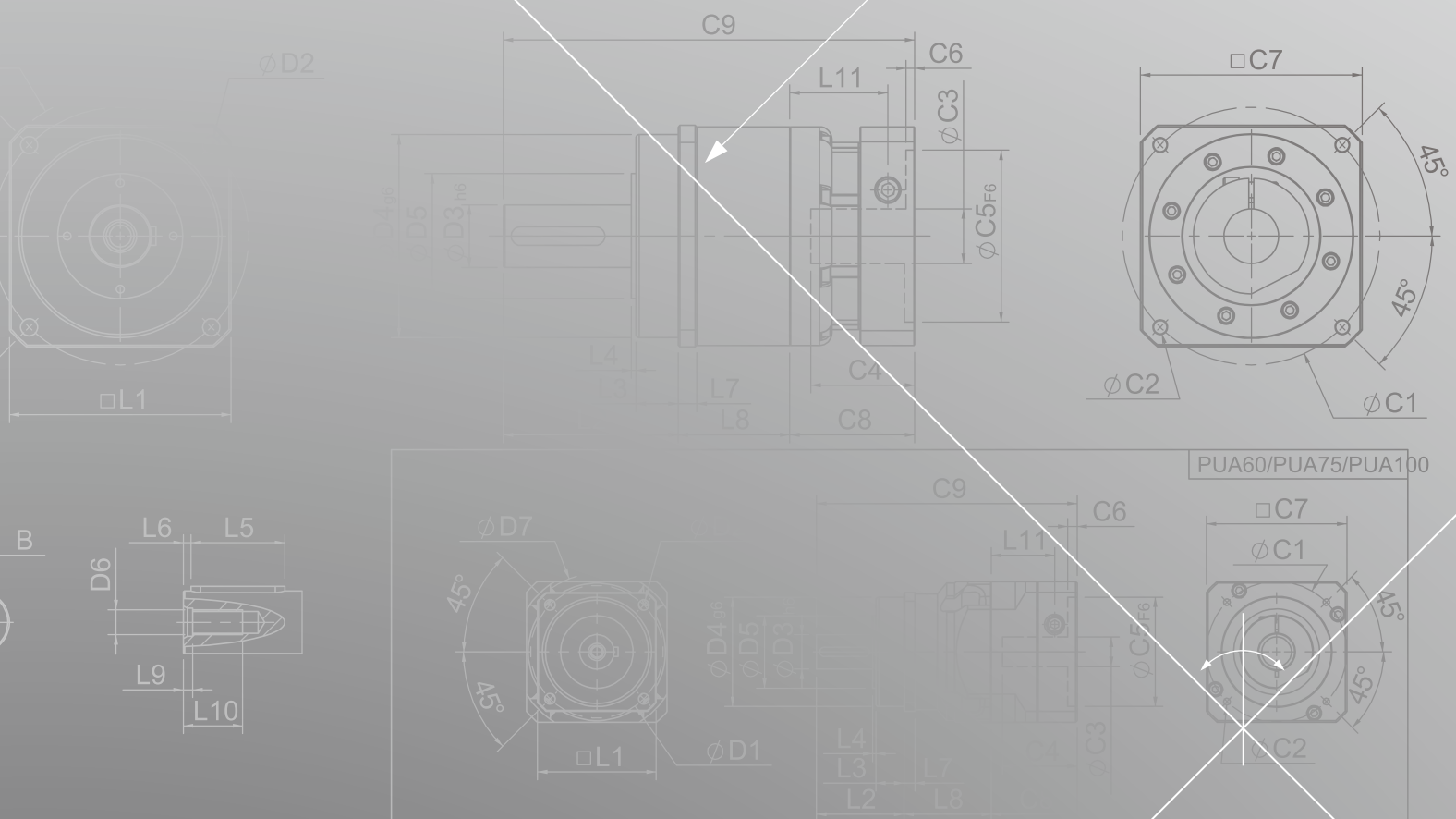
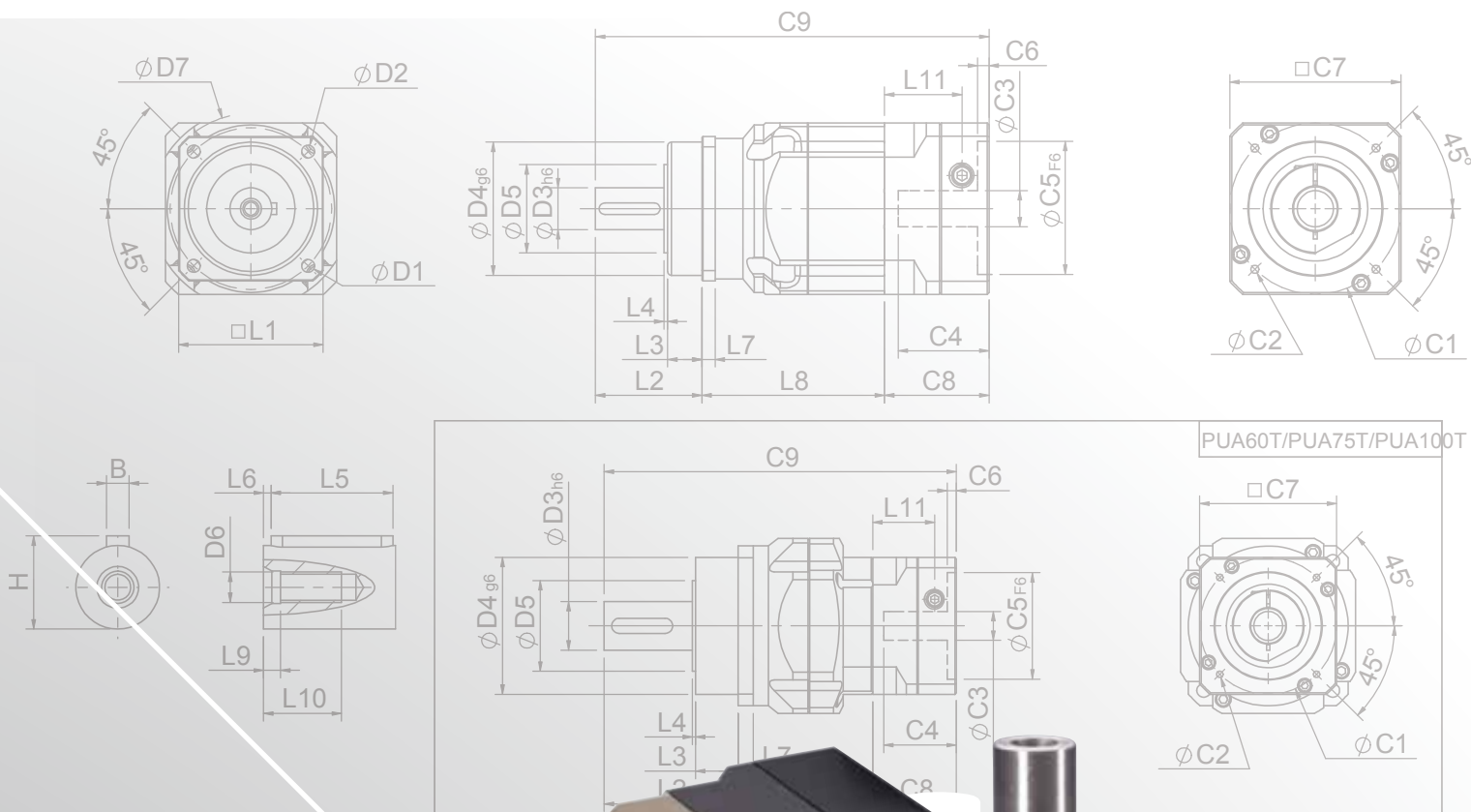


# PUA SERIES

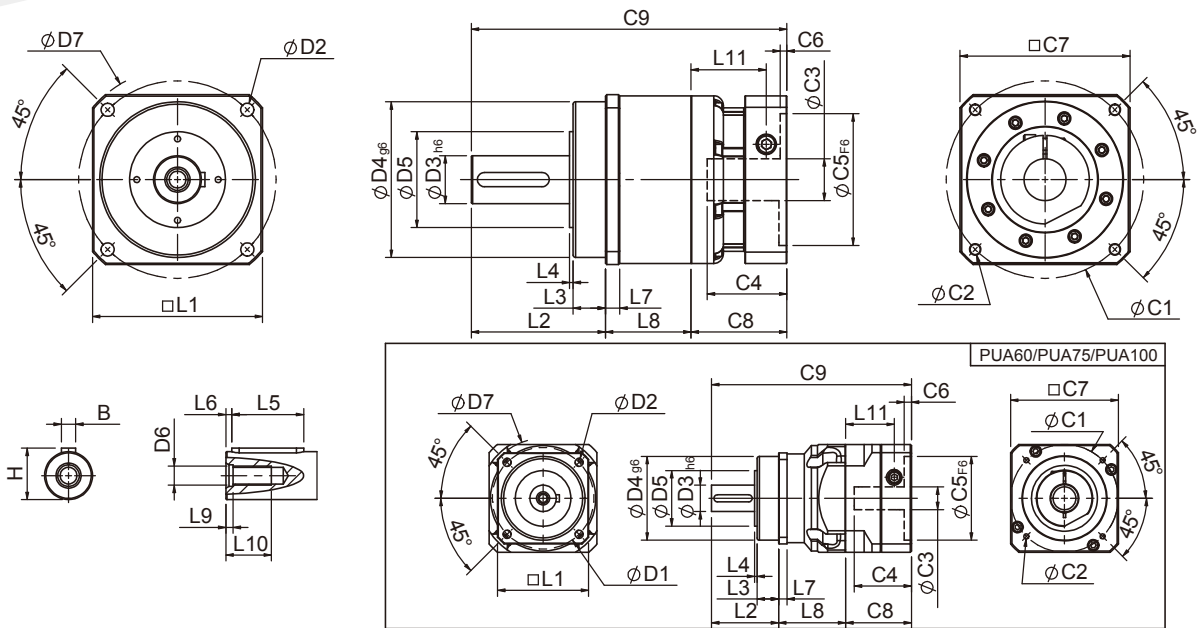




PUA60T/PUA75T/PUA100T



## PUA Single Stage Dimensions PUA單段外型尺寸圖



## Specifications 規格

Unit:mm

尺寸 Dimensions	PUA60	PUA75	PUA100	PUA140
D1	68	85	120	165
D2	5.5	6.8	9	11
D3 <sub>h6</sub>	16	22	32	40
D4 <sub>g6</sub>	60	70	90	130
D5	34.4	46.4	59.6	79.2
D6	M5x0.8P	M8x1.25P	M12x1.75P	M16x2.0P
D7	80	100	138	186
L1	62	76	105	142
L2	48.5	56	88	112
L3	18.5	18	28	27
L4	1.5	2	2	3
L5	25	32	40	60
L6	2	2	5	5
L7	6	7	10	12
L8	32.5	56	46	71.5
L9	4	4.5	6	6
L10	16.5	20.5	30	38
L11	35.5	40.5	41.8	62.8
C1 <sup>2</sup>	70	90	115	165
C2 <sup>2</sup>	M5x0.8P	M6x1P	M8x1.25P	M10x1.5P
C3 <sup>2</sup>	≤14/≤19	≤19/≤24	≤24/≤32/≤38	≤35/≤38
C4 <sup>2</sup>	37	47.8	51	66.5
C5 <sup>2</sup> <sub>F6</sub>	50	70	95	130
C6 <sup>2</sup>	4	6	6	5.5
C7 <sup>2</sup>	60	90	115	140
C8 <sup>2</sup>	46	55	58	80
C9 <sup>2</sup>	127	167	192	263.5
B	5	6	10	12
H	18	24.5	35	43

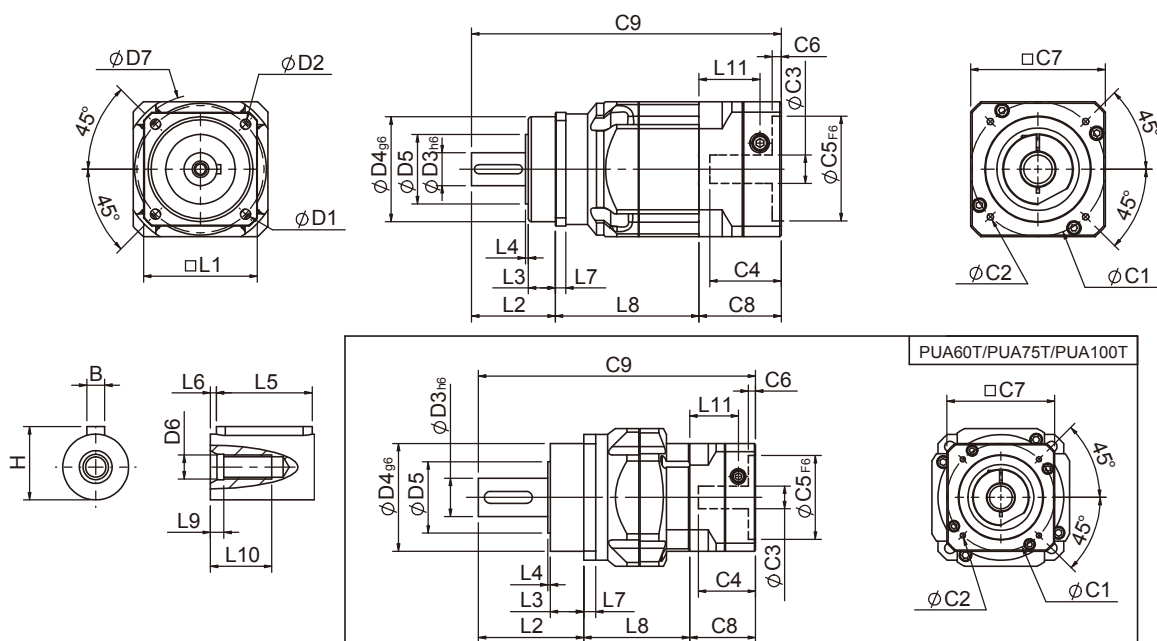
★ C1~C9是公製標準馬達連接板尺寸,請依所選用的馬達決定.

★ 本公司有權針對以上數據規格逕行設計變更不先行告知.

★ C1~C9 are motor specific dimensions(metric std shown ), Size may vary according to the motor flange chosen.

★ Specification subject to change without notice.

## PUA Double Stage Dimensions-1 PUA雙段外型尺寸圖-1



## Specifications 規格

Unit:mm

尺寸 Dimensions	PUA60	PUA60T	PUA75	PUA75T	PUA100T
D1		68		85	120
D2		5.5		6.8	9
D3 <sub>h6</sub>		16		22	32
D4 <sub>g6</sub>		60		70	90
D5		34.4		46.4	59.6
D6		M5x0.8P		M8x1.25P	M12x1.75P
D7		80		100	138
L1		62		76	105
L2		48.5		56	88
L3		18.5		18	28
L4		1.5		2	2
L5		25		32	40
L6		2		2	5
L7		6		7	10
L8	65.5	61	96	88.5	88.5
L9		4		4.5	6
L10		16.5		20.5	30
L11	35.5	29	40.5	35.5	40.5
C1 <sup>2</sup>	70	46	90	70	90
C2 <sup>2</sup>	M5x0.8P	M4x0.7P	M6x1P	M5x0.8P	M6x1P
C3 <sup>2</sup>	≤14/≤19	≤8/≤14	≤19/≤24	≤14/≤19	≤19/≤24
C4 <sup>2</sup>	37	27	47.8	37	47.8
C5 <sup>2</sup> <sub>F6</sub>	50	30	70	50	70
C6 <sup>2</sup>	4	4	6	4	6
C7 <sup>2</sup>	60	42.6	90	60	90
C8 <sup>2</sup>	46	38.5	55	46	55
C9 <sup>2</sup>	160	148	207	190.5	231.5
B		5		6	10
H		18		24.5	35

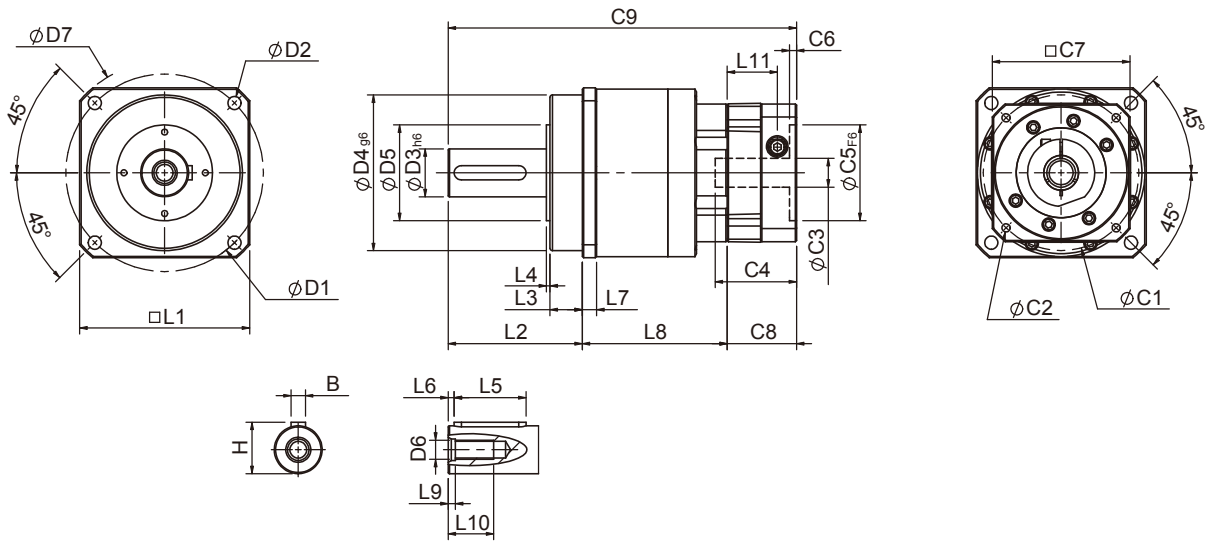
\* C1~C9是公製標準馬達連接板尺寸,請依所選用的馬達決定。

\* 本公司有權針對以上數據規格運行設計變更不先行告知。

\* C1~C9 are motor specific dimensions(metric std shown), Size may vary according to the motor flange chosen.

\* Specification subject to change without notice.

## PUA Double Stage Dimensions-2 PUA雙段外型尺寸圖-2



## Specifications 規格

Unit:mm

尺寸 Dimensions	PUA140T	-	-
D1	165	-	-
D2	11	-	-
D3 <sub>h6</sub>	40	-	-
D4 <sub>g6</sub>	130	-	-
D5	79.2	-	-
D6	M16x2.0P	-	-
D7	186	-	-
L1	142	-	-
L2	112	-	-
L3	27	-	-
L4	3	-	-
L5	60	-	-
L6	5	-	-
L7	12	-	-
L8	121	-	-
L9	6	-	-
L10	38	-	-
L11	41.8	-	-
C1 <sup>2</sup>	130	-	-
C2 <sup>2</sup>	M8x1.25P	-	-
C3 <sup>2</sup>	≤24/≤32/≤38	-	-
C4 <sup>2</sup>	51	-	-
C5 <sup>2</sup> <sub>F6</sub>	110	-	-
C6 <sup>2</sup>	6	-	-
C7 <sup>2</sup>	115	-	-
C8 <sup>2</sup>	58	-	-
C9 <sup>2</sup>	291	-	-
B	12	-	-
H	43	-	-

★ C1~C9是公製標準馬達連接板尺寸,請依所選用的馬達決定.

★ 本公司有權針對以上數據規格逕行設計變更不先行告知.

★ C1~C9 are motor specific dimensions(metric std shown ), Size may vary according to the motor flange chosen.

★ Specification subject to change without notice.

## PUA Specifications Table PUA性能規格共表

規格 Specifications	節數 Stage	減速比 Ratio	PUA60	PUA-75	PUA-100	PUA-140	
額定輸出力矩 $T_{2N}$ Nominal Output Torque	1	3	53	145	180	340	
		4	55	150	240	500	
		5	54	140	290	600	
		6	46	135	280	560	
		7	44	125	270	530	
		8	41	110	240	480	
		9	37	95	220	430	
		10	37	95	220	430	
		2	15	53	145	180	520
			20	55	150	240	600
	25		54	140	290	600	
	30		54	140	290	600	
	35		54	140	290	600	
	40		54	140	290	600	
	45		54	140	290	600	
	50		54	140	290	600	
	60		46	135	280	560	
	70	44	125	270	530		
	80	41	110	240	480		
90	37	95	220	430			
100	37	95	220	430			
急停力矩 $T_{2NOT}$ Emergency Stop Torque	N · m	3.0倍額定輸出力矩 (3.0 times of Nominal Output Torque) (* 最大輸出力矩 Max. Output Torque $T_{2B}$ = 60% of Emergency Stop Torque)					
額定輸入轉速 $n_{1N}$ Nominal Input Speed	rpm	1,2	3-100	4000	3500	3000	2500
最大輸入轉速 $n_{1max}$ Max. Input Speed	rpm	1,2	3-100	6000	6000	5000	4500
超精密背隙 Micro Backlash P0	arcmin	1	3-10	≤ 2	≤ 2	≤ 1	≤ 1
		2	12-100	≤ 4	≤ 4	≤ 3	≤ 3
精密背隙 Precision Backlash P1	arcmin	1	3-10	≤ 4	≤ 4	≤ 3	≤ 3
		2	12-100	≤ 6	≤ 6	≤ 5	≤ 5
標準背隙 Standard Backlash P2	arcmin	1	3-10	≤ 6	≤ 6	≤ 5	≤ 5
		2	12-100	≤ 8	≤ 8	≤ 7	≤ 7
扭轉剛性 Torsional Rigidity	N · m / arcmin	1,2	3-100	7	14	25	50
容許徑向力 $F_{2rB}^1$ Max. Radial Load	N	1,2	3-100	1900	5000	7410	11380
容許軸向力 $F_{2aB}^1$ Max. Axial Load	N	1,2	3-100	1500	3080	4500	8830
使用溫度 Operating Temp.	°C		3-100	-10°C ~ +90°C			
使用壽命 Service Life	hr		3-100	30,000 (15,000/ 連續運轉 Continuous operation)			
效率 Efficiency	%	1	3-10	≥ 97%			
		2	12-100	≥ 94%			
重量 Weight	kg	1	3-10	1.5	3.5	6.6	14.5
		2	12-100	2.0/1.7	5.2/4.0	8.1	17.5
安裝方向 Mounting Position	-	1,2	3-100	任意方向 Any Direction			
噪音值 Noise Level <sup>2</sup>	dBA/1m	1,2	3-100	58	60	63	65
防護等級 Protection Class	-	1,2	3-100	IP65			
潤滑 Lubrication	-	1,2	3-100	全合成潤滑油脂 Synthetic Lubricant			
減速機轉動慣量 Inertia (J1)							
節數 Stage	減速比 Ratio	單位 unit	PUA60	PUA-75	PUA-100	PUA-140	
1	3	Kg · cm <sup>2</sup>	0.23	0.97	2.35	10.00	
	4		0.18	0.67	1.66	7.17	
	5		0.17	0.65	1.50	6.52	
	6/7/8		0.14	0.60	1.45	6.17	
	9/10		0.14	0.58	1.41	6.10	
節數 Stage	減速比 Ratio		PUA-60(T)	PUA-75(T)	PUA-100T	PUA-140T	
2	15/20		0.17(0.02)	0.65(0.17)	0.65	2.35	
	25/30/35/40		0.14(0.02)	0.60(0.14)	0.60	1.45	
	45/50/60/70/80/90/100		0.14(0.02)	0.58(0.14)	0.58	1.41	

1. 輸出轉速100rpm時，作用於輸出軸中心位置 Applied to the output shaft center @100rpm.  
 2. 3000rpm 空載量測 Measured at 3000 rpm with no load. These values are measured by gearbox with ratio = 10 (1-stage) or ratio = 100 (2-stage) at nominal input speed or 3000 rpm (if nominal input speed is higher than 3000 rpm) with no load.  
 ※本公司有權對以上數據規格逕行設計變更不先行告知。The above figures/specifications are subject to change without prior notice.

Products due to human error, natural disasters or other factors lead to poor or damaged, will not be covered under warranty.  
 產品因人為原因或天災等因素導致不良或損壞，不在保固範圍內。