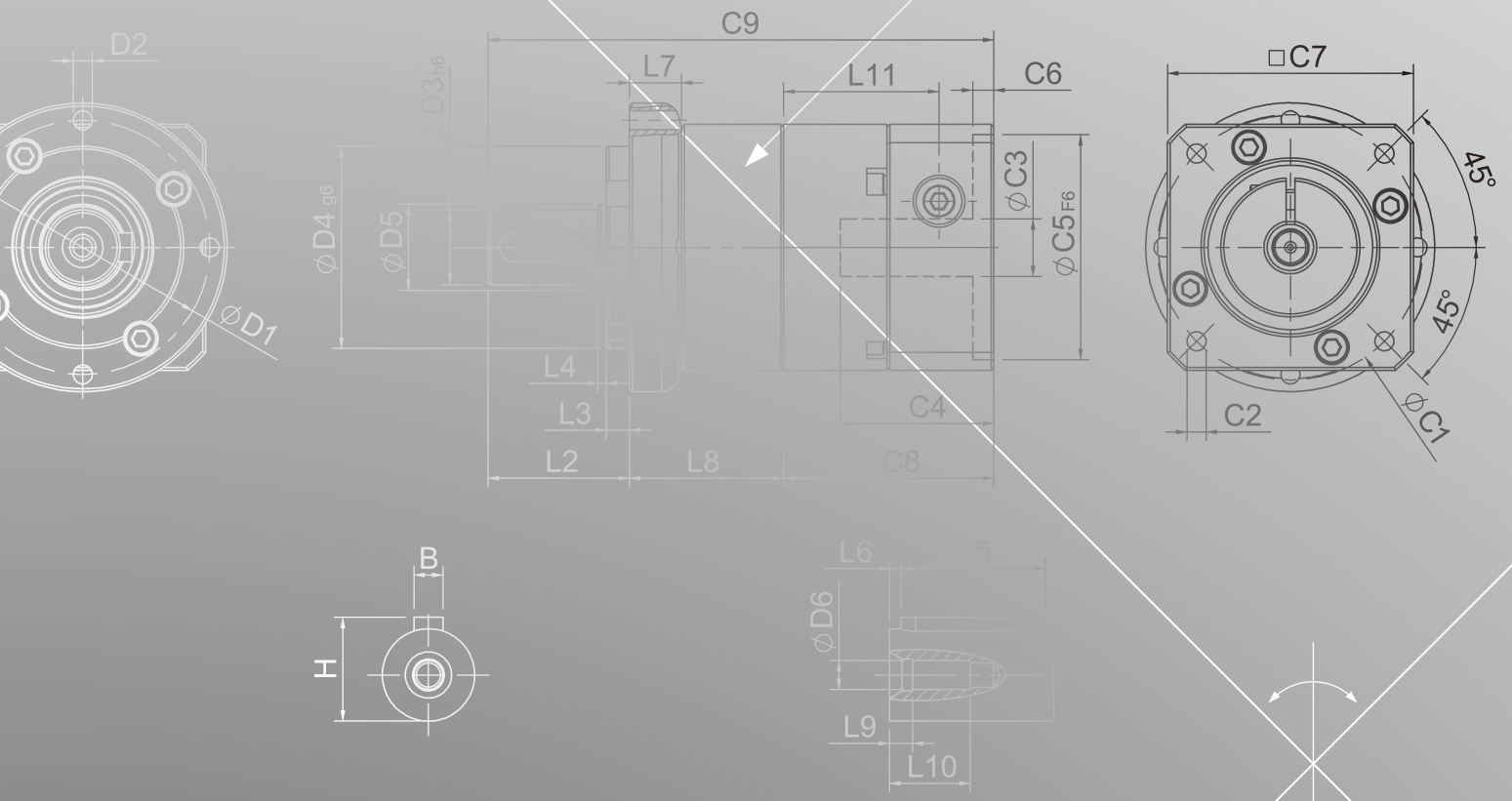
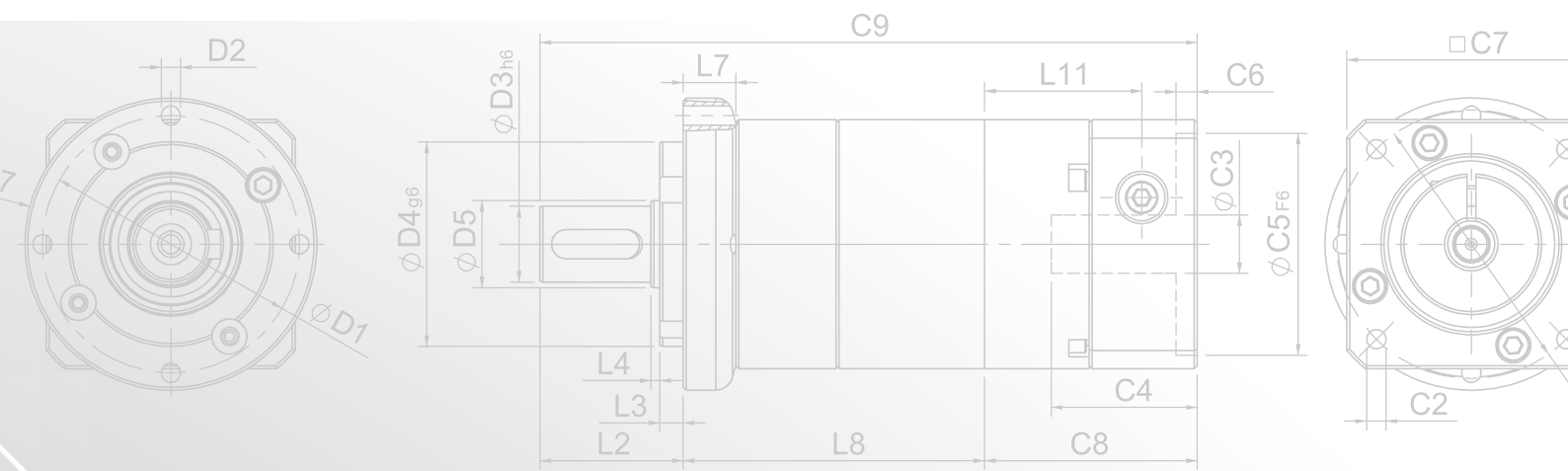
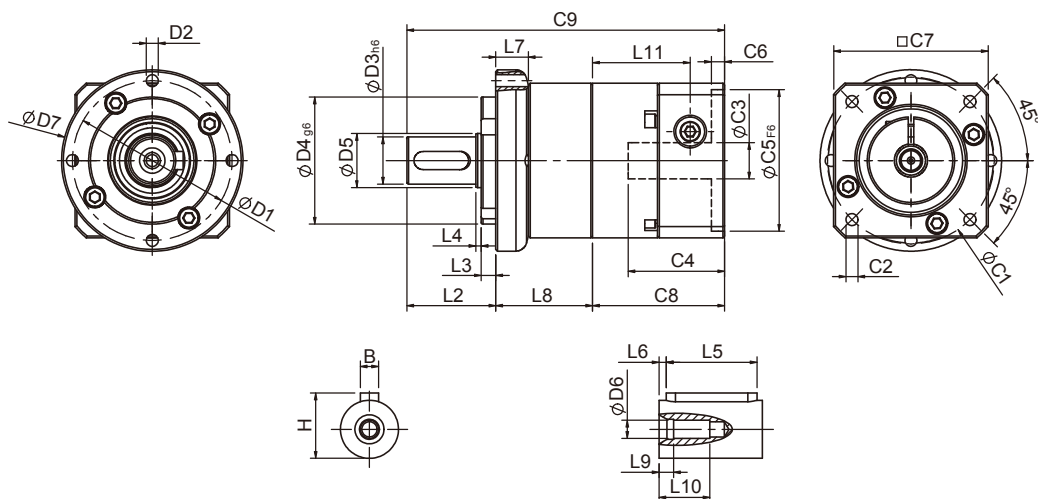


PAC SERIES





PAC Single Stage Dimensions



Specifications

Unit:mm

Dimensions	PAC50	PAC70	PAC90	PAC120
D1	44	62	80	108
D2	M4x0.7P	M5x0.8P	M6x1.0P	M8x1.25P
D3 _{h6}	12	16	22	32
D4 _{g6}	35	52	68	90
D5	15	20	35	45
D6	M4x0.7P	M5x0.8P	M8x1.25P	M12x1.75P
D7	50	70	90	120
L2	24.5	36	46	60
L3	4	6	7	7
L4	1.5	1.5	2.5	2
L5	15	25	32	40
L6	2	2	3	5
L7	8.8	13.3	14	15
L8	26.5	37.3	43.8	65.3
L9	4	4	4.5	6
L10	14	16.5	20.5	30
L11	26.9	34.3	41.5	51.5
C1 ²	46	70	90	145
C2 ²	M4x0.7P	M5x0.8P	M6x1.0P	M8x1.25P
C3 ²	$\leq 8 / \leq 11$	$\leq 14 / \leq 19$	$\leq 19 / \leq 24 / \leq 28$	$\leq 24 / \leq 32 / \leq 38$
C4 ²	26.5	33.5	41	51.5
C5 ² _{F6}	30	50	70	40
C6 ²	4	4	6	6
C7 ²	42.6	60	90	130
C8 ²	36.4	44.8	55.8	68
C9 ²	87.4	118.1	145.6	193.3
B	4	5	6	10
H	13.5	18	24.5	35

★ C1~C9 are motor specific dimensions (metric std shown). Size may vary according to motor flange.

★ Specification subject to change without notice.

PAC Specifications Table

Specifications		Stage	Ratio	PAC-50	PAC-70	PAC-90	PAC-120
Nominal Output Torque T_{2N}	N · m	1	3	9	28	85	210
			4	10	32	80	240
			5	11	35	95	260
			7	10	28	85	220
			9	8	23	75	210
		10	8	21	65	190	
		Stage	Ratio	PAC-50	PAC-70/ PAC-70T	PAC-90/ PAC-90T	PAC-120T
		2	15	11	34	90	230
			20	10	32	80	240
			25	11	35	95	260
			30	-	-	-	260
			35	11	35	95	260
			40	-	-	-	260
			45	11	35	95	260
			49	10	-	-	-
50	-		35	95	260		
63	10	-	-	-			
70	-	28	85	220			
100	8	21	65	190			
Emergency Stop Torque T_{2NOT}	N · m	(3.0 times of Nominal Output Torque) (* Max. Output Torque T_{2B} = 60% of Emergency Stop Torque)					
Nominal Input Speed n_{1N}	rpm	1,2	3-100	4000	4000	3000	2500
Max. Input Speed n_{1max}	rpm	1,2	3-100	8000	6000	6000	5000
Standard Backlash P2	arcmin	1	3-10	≤ 9	≤ 8	≤ 7	≤ 6
		2	15-100	≤ 12	≤ 10	≤ 9	≤ 8
Torsional Rigidity	N · m /arcmin	1,2	3-100	1.5	4.0	8.5	17
Max. Radial Load F_{2rB}^{-1}	N	1,2	3-100	760	1250	2030	4200
Max. Axial Load F_{2aB}^{-1}	N	1,2	3-100	410	700	1200	2600
Operating Temp.	°C	-10°C ~ +90°C					
Service Life	hr	3-100 20,000 (10,000/Continuous operation)					
Efficiency	%	1	3-10	≥ 95%			
		2	15-100	≥ 90%			
Weight	kg	1	3-10	0.6	1.3	3.2	7.5
		2	15-100	0.8	1.8/1.6	4.8/3.7	9.2
Mounting Position	-	1,2	3-100	Any direction			
Noise Level ²	dB(A)/1m	1,2	3-100	61	63	66	67
Protection Class	-	1,2	3-100	IP65			
Lubrication	-	1,2	3-100	Synthetic Lubricant			
Inertia (J1)							
Stage	Ratio	unit		PAC-50(ψ8)	PAC-70(ψ14)	PAC-90(ψ19)	PAC-120(ψ24)
1	3	Kg · cm ²		0.04	0.23	0.77	2.30
	4			0.03	0.21	0.67	1.92
	5			0.03	0.21	0.61	1.71
	7			0.03	0.21	0.60	1.65
	9/10			0.03	0.21	0.60	1.63
Stage	Ratio			PAC-50(ψ8)	PAC-70(ψ14)/ PAC-70T(ψ8)	PAC-90(ψ19)/ PAC-90T(ψ14)	PAC-120T (ψ19)
2	15/20/25			0.03	0.21(0.03)	0.61(0.21)	0.61
	30/35/49			0.03	0.21(0.03)	0.60(0.21)	0.60
	40/45/50/63/70/100			0.03	0.21(0.03)	0.60(0.21)	0.60
* 1. Applied to the output shaft center at 100 rpm.							
* 2. Measured at 3000 rpm with no load. These values are measured by gearbox with ratio = 10 (1-stage) or ratio = 100 (2-stage) at nominal input speed or 3000 rpm (if nominal input speed is higher than 3000 rpm) with no load.							
※ The above figures/specifications are subject to change without prior notice.							

Products due to human error, natural disasters or other factors lead to poor or damaged, will not be covered under warranty.