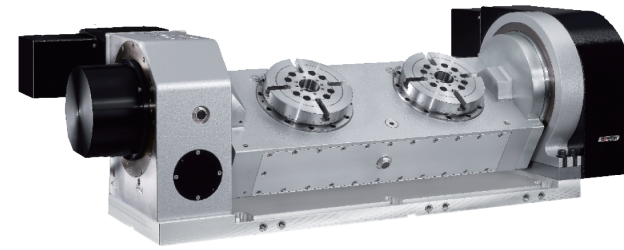
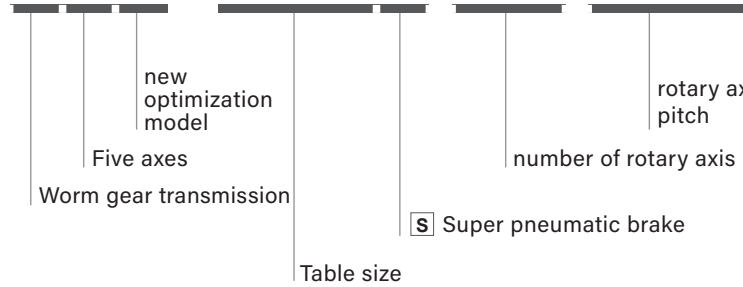


Multi Spindle Tilting Rotary Table



GFA-170S-2W-300



Worktable diameter Ø125, Ø170
Multiple rotary axis allow high volume production and automation integration.

SPECIFICATIONS

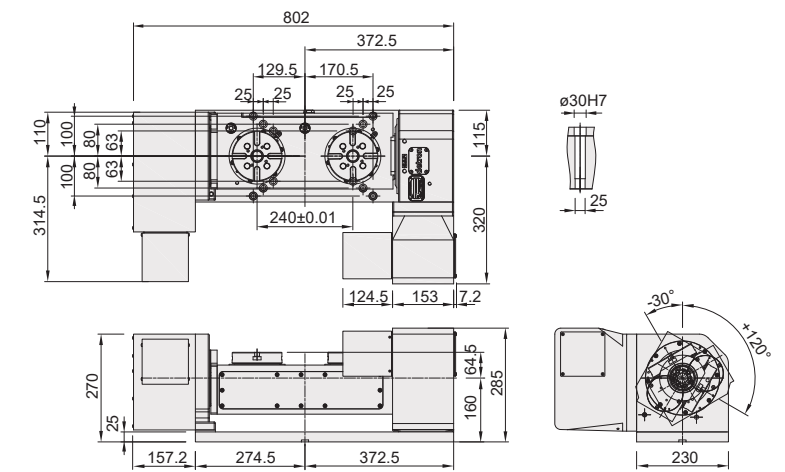
MODEL	Unit	GFA-125S-2W-240	GFA-170S-2W-300	
Worktable diameter	mm / inch	Ø125 / Ø4.92	Ø170 / Ø6.69	
Center bore diameter	mm / inch	Ø30H7 / Ø1.18H7	Ø40H7 / Ø1.57H7	
Pitch of rotary axis	mm / inch	240 / 9.45	300 / 11.81	
Max. work swing	mm / inch	195 / 7.68	285 / 11.22	
Height of table (horizontal)	mm / inch	224.5 / 8.84	250 / 9.84	
Height of center (vertical)	mm / inch	160 / 6.30	220 / 8.66	
Width of T-slot	mm / inch	12H7 / 0.47H7	12H7 / 0.47H7	
Width of guide block	mm / inch	18 / 0.71	18 / 0.71	
Drive pressure / method	MPa / psi	pneumatic 0.55~0.7 / 79.8~101.5	pneumatic 0.55~0.7 / 79.8~101.5	
Servo motor spec		refer to page 69		
Transmission ratio		R 1/90	T 1/90	
Max. table speed	min ⁻¹	22.2	22.2	
Allowable loading capacity	In Horizontal	kg / lb	35 / 77	40 / 88
	In Tilting (0~90°)	kg / lb	20 / 44	30 / 66
Allowable unblancing work moment	WxL	Nm /ft. lbs.	24 / 17.688	62 / 45.728
Allowable load (when table clamped)	F	N / lbs	2800 / 629.5	4900 / 1102
	FxL	Nm /ft. lbs.	140 / 103.26	300 / 221.26
	FxL	Nm /ft. lbs.	300 / 221	600 / 442.5
Allowable loading inertia	$\frac{W \cdot D^2}{8}$	kg.m ²	0.1	0.15
Resolution	sec		0.001	0.001
Indexing accuracy	sec		40"	60"
Repeatability	sec		6"	8"
Tilting angle range	deg.		-30 ~ +120	-30 ~ +120
Net weight (servo motor excluded)	Kg/lbs		116 / 255.2	258 / 568.7
Allowable cutting torque	Nm /ft. lbs.		85 / 62.645	200 / 147.512

Note: R: Rotary Axis T: Tilt Axis

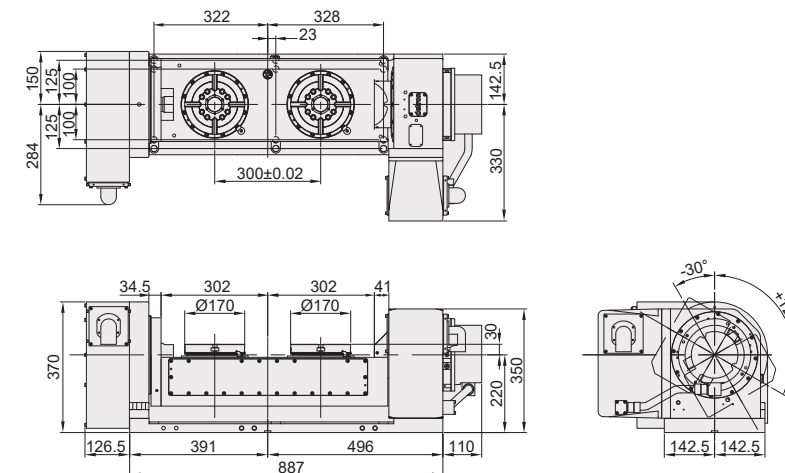
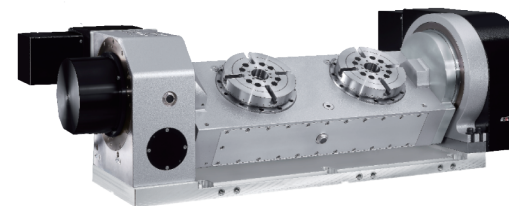
DIMENSIONAL DRAWINGS

Unit : mm

GFA-125S-2W-240



GFA-170S-2W-300



Note: 1. The length of servo guard may vary with servo motor type. (the metal sheet dimensions shown at above are based on Fanuc motor)
2. Allowable wheel torque at table speed of 1 min⁻¹.
3. According to application engineering, optical encoder is recommended for tilting axis.