

一體式鑽夾頭

INTEGRATED KEYLESS DRILL CHUCKS

INT 型



■一體式主軸更優於傳統設計。

主要特點有：

- 結構緊密。
- 能防止夾頭脫落。
- 操作安全。

• 把傳統結構中柄與夾頭連接產生誤差減少到最小。

台灣專利號碼: No.75900

美國專利號碼: No.5275516

■TYPE:INT-C Integrated Type Keyless Drill Chucks

The main-shaft is of integrated type, which is much more superior than the traditional design. The major features are as follows.

1. Extremely rigid construction.
2. The accumulative tolerances can be reduced to a minimum, since the traditional mechanism requiring an arbor to connect the Drill chucks which will generate the accumulative tolerances. The integrated type keyless Drill chuck is designed to solve this problem totally.
3. Prevent the Drill chucks from falling out.
4. Extremely safe in operation.

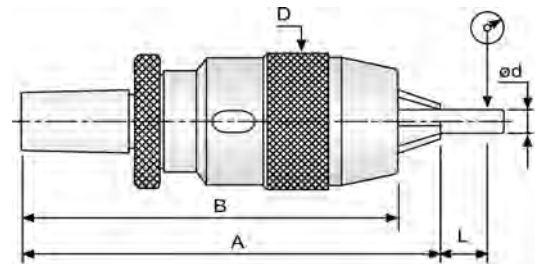
TAIWAN PAT. NO. 75900

USA PAT. NO. 5275516

精度與扭矩表

Run-out Accuracy & Torque Inspection Table

| 型號/TYPE | d | L | 跳動/RUN-OUT | 扭矩/TORQUE |
|---------|----|----|------------|-----------|
| INT-3 | 3 | 35 | 0.05 | 45 |
| INT-8 | 3 | 35 | 0.05 | 160 |
| | 6 | | | |
| | 8 | 50 | | |
| INT-13 | 5 | 55 | 0.05 | 400 |
| | 10 | | | |
| | 13 | 75 | | |
| INT-16 | 5 | 55 | 0.05 | 480 |
| | 10 | | | |
| | 16 | 80 | | |



單位/Unit:mm

| 型號/TYPE | 夾持能力/CLAMPING | 錐孔或直柄類型 | D | A | B | 重量WT(g) | QTY Pcs/Cu-Ft | 淨/毛重NW/GW(Kgs) |
|-----------|------------------------|----------|------|-------|-------|---------|---------------|----------------|
| INT-3 | 0.5~3.175 [1/64"~1/8"] | MT1-C | 25.0 | 127.5 | 122.5 | 160 | 20/0.83 | 4 / 5 |
| | | JC1/2"-C | 25.0 | 107.0 | 102.0 | 150 | 20/0.83 | 4 / 5 |
| | | JC12-C | 25.0 | 107.0 | 102.0 | 150 | 20/0.83 | 4 / 5 |
| INT-8 | 0.5~8.0 [1/64"~5/16"] | MT2-C | 35.0 | 157.0 | 149.0 | 520 | 20/0.83 | 11/12 |
| | | JC20-C | 35.0 | 141.0 | 133.0 | 500 | 20/0.83 | 10/11 |
| | | JC3/4"-C | | | | | | |
| INT-13 | 0.5~13.0 [1/64"~1/2"] | R8-C | 50.5 | 207.0 | 196.0 | 1500 | 20/0.83 | 30/31 |
| | | MT2-C | 50.5 | 184.0 | 172.0 | 110 | 20/0.83 | 22/23 |
| | | MT3-C | 50.5 | 201.0 | 190.0 | 1250 | 20/0.83 | 25/26 |
| | | MT4-C | 50.5 | 227.0 | 216.0 | 1580 | 20/0.83 | 32/33 |
| | | JC20-C | 50.5 | 164.0 | 153.0 | 1100 | 20/0.83 | 22/23 |
| | | JC3/4-C | | | | | | |
| | | JC25-C | | | | | | |
| | | JC1-C | 50.5 | 174.0 | 163.0 | 1250 | 20/0.83 | 25/26 |
| | | JC32-C | 50.5 | 185.0 | 173.0 | 1450 | 20/0.83 | 29/30 |
| JC1-1/4-C | | | | | | | | |
| INT-16 | 3.0~16.0 [1/8"~5/8"] | R8-C | 56.0 | 211.0 | 198.0 | 1850 | 20/0.83 | 37/38 |
| | | MT3-C | 56.0 | 207.0 | 194.0 | 1520 | 20/0.83 | 30/31 |
| | | MT4-C | 56.0 | 232.0 | 219.0 | 1850 | 20/0.83 | 37/38 |
| | | JC20-C | 56.0 | 165.0 | 152.0 | 1450 | 20/0.83 | 29/30 |
| | | JC3/4-C | | | | | | |
| | | JC25-C | | | | | | |
| | | JC1-C | 56.0 | 175.0 | 162.0 | 1500 | 20/0.83 | 30/31 |
| | | JC32-C | 56.0 | 197.0 | 184.0 | 1720 | 20/0.83 | 35/36 |
| JC1-1/4-C | | | | | | | | |

