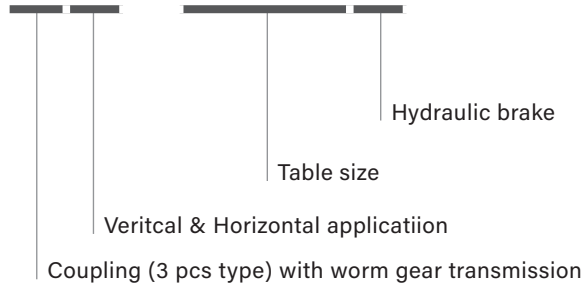


## CNC Index Table

CX - 255H



- Worktable diameter Ø255, Ø320, Ø400, Ø500.
- Motor is mounted at right side (vertical and horizontal applications).
- Equipped with three pieces type coupling with worm gear to achieve positioning. It is suitable for heavy cutting.
- The minimum degree is 1°.



### SPECIFICATIONS

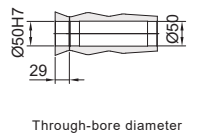
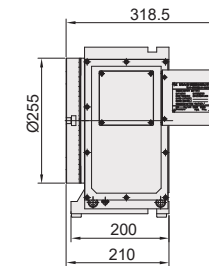
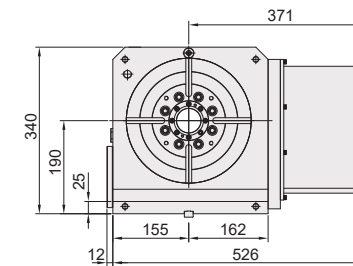
MODEL	Unit	CX-255H	CX-320H	CX-400H	CX-500H	
Worktable diameter	mm / inch	Ø255 / Ø10.04	Ø320 / Ø12.60	Ø400 / Ø15.75	Ø500 / Ø19.69	
Center bore diameter	mm / inch	Ø50H7 / Ø1.97H7	Ø70H7 / Ø2.76H7	Ø110H7 / Ø4.33H7	Ø130H7 / Ø5.12H7	
Through-bore diameter	mm / inch	Ø50 / Ø1.97	Ø70 / Ø2.76	Ø110 / Ø4.33	Ø130 / Ø5.12	
Height of table (horizontal)	mm / inch	210 / 8.27	235 / 9.25	255 / 10.04	281 / 11.06	
Height of center (vertical)	mm / inch	190 / 7.48	210 / 8.27	255 / 10.04	310 / 12.20	
Width of T-slot	mm / inch	12H7 / 0.47H7	14H7 / 0.55H7	14H7 / 0.55H7	18H7 / 0.71H7	
Width of guide block	mm / inch	18 / 0.71	18 / 0.71	18 / 0.71	18 / 0.71	
Clamping method / pressure	MPa / psi	Hydraulic 3.5 / 508	Hydraulic 3.5 / 508	Hydraulic 3.5 / 508	Hydraulic 3.5 / 508	
Clamping torque	Nm / ft. lbs.	3000 / 2211	4000 / 2948	5000 / 3685	10000 / 7370	
Servo motor spec		refer to page 69				
Transmission ratio		1 / 120	1 / 120	1 / 144	1 / 180	
Max. table speed	min <sup>-1</sup>	22.2	22.2	11.1	11.1	
Allowable loading inertia ( $\frac{W \cdot D^2}{8}$ )	Kg.m <sup>2</sup>	2.48	4.57	10.2	19.1	
Resolution	deg.	1°	1°	1°	1°	
Indexing accuracy	sec.	8	8	8	8	
Repeatability	sec.	2	2	2	2	
Net weight (servo motor excluded)	kg / lb	134 / 295	186 / 410	350 / 771	450 / 992	
Allowable loading capacity	Vertical	kg / lb	125 / 275	175 / 385	200 / 440	400 / 880
	Horizontal	kg / lb	300 / 660	350 / 770	500 / 1100	600 / 1320
	Tailstock applied	kg / lb	300 / 660	400 / 880	500 / 1100	600 / 1320
Allowable load (when table clamped)	F	N / lbs	16000 / 3590.4	20000 / 4488.0	30000 / 6732.0	40000 / 8976.0
	FXL	Nm / ft. lbs.	1750 / 1289.75	2500 / 1842.5	3000 / 2211.0	6000 / 4422.0
	FXL	Nm / ft. lbs.	3000 / 2211.0	4000 / 2948.0	5000 / 3685.0	10000 / 7370.0
Drive torque	Nm / ft. lbs.	240 / 176.9 (motor α iF4) 480 / 353.8 (motor α iF8)	720 / 530.2	864 / 618.5	1080 / 795.3	

Note: Allowable cutting torque at table speed of 1 min<sup>-1</sup>.

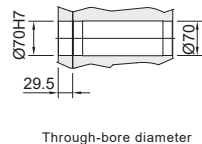
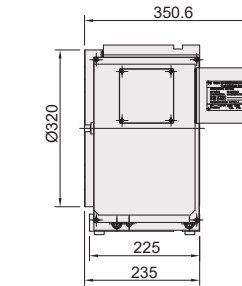
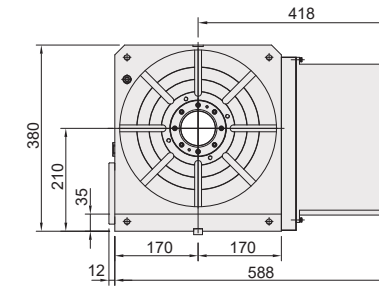
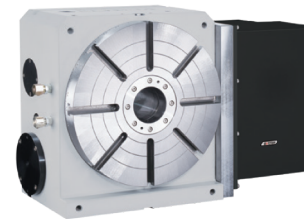
## DIMENSIONAL DRAWINGS

Unit : mm

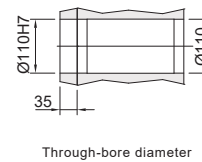
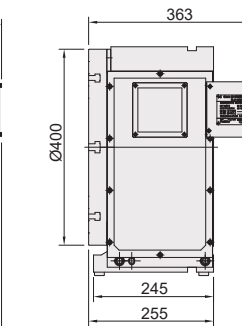
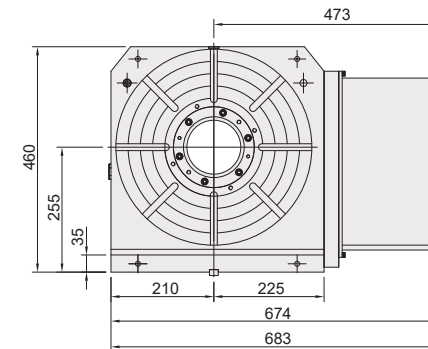
### CX-255H



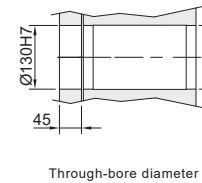
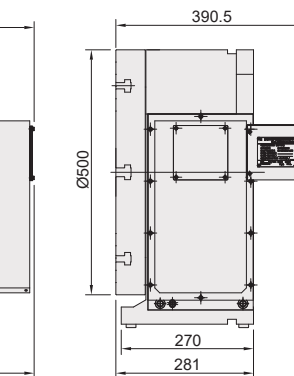
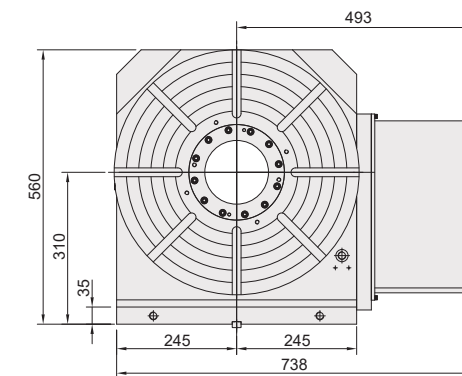
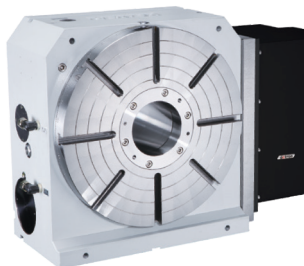
### CX-320H



### CX-400H



### CX-500H



Note: The length of servo guard may vary with servo motor type.  
(metal sheet dimensions shown above are based on Fanuc motor)