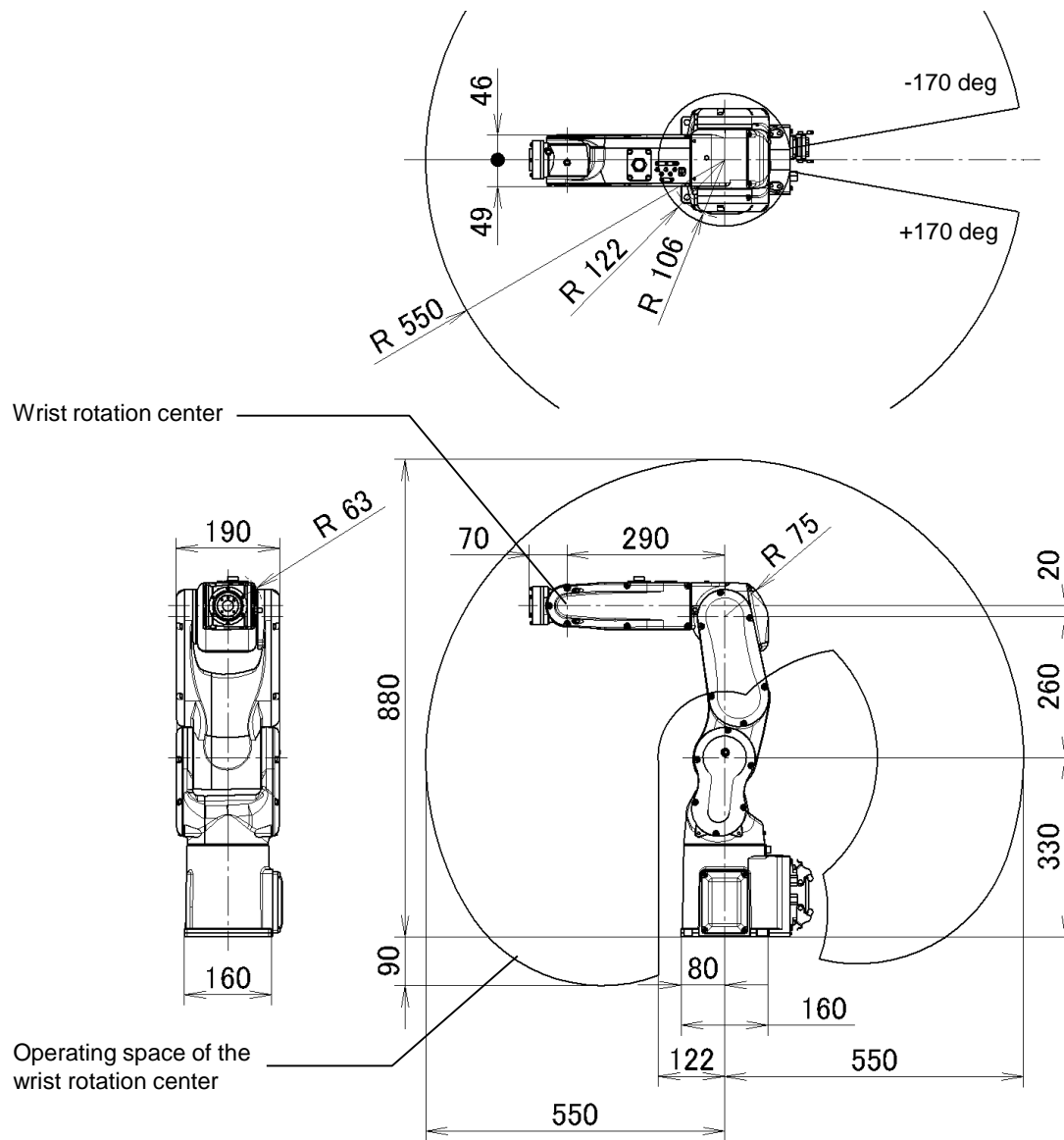


FANUC Robot **ER-4iA**

適合教學使用的小型工業機器人





Model	ER-4iA		LR Mate 200iD/4S
Controlled axes	6 axes		
Reach	550mm		
Installation	Floor, Upside-down	Floor, Upside-down, Angle mount	
Max. load capacity at wrist	4kg		
Motion range (Maximum speed)	J1 axis	340° (460° /s) 5.93 rad (8.03 rad/s)	340° /360° (option) (460° /s) 5.93 rad / 6.28 rad (option) (8.03 rad/s)
	J2 axis	230° (360° /s) 4.01 rad (6.28 rad/s)	230° (460° /s) 4.01 rad (8.03 rad/s)
	J3 axis	402° (520° /s) 7.02 rad (9.08 rad/s)	
	J4 axis	380° (560° /s) 6.63 rad (9.77 rad/s)	
	J5 axis	240° (560° /s) 4.19 rad (9.77 rad/s)	
	J6 axis	720° (900° /s) 12.57 rad (15.71 rad/s)	
	Allowable load moment at writ	J4 axis	8.86Nm
J5 axis		8.86Nm	
J6 axis		4.90Nm	
Allowable load inertia at wrist	J4 axis	0.20kgm ²	
	J5 axis	0.20kgm ²	
	J6 axis	0.067kgm ²	
Repeatability	± 0.01mm		
Mass (Note 2)	20kg		
Acoustic noise level (Note 3)	64.7dB		
IP rate	IP50 (Note 4)	IP67	
Installation environment	Ambient temperature : 0 - 45°C Ambient humidity : Normally 75%RH or less (No dew nor frost allowed) Short term 95%RH or less (within one month) Vibration acceleration : 4.9m/s ² (0.5G) or less		

Note 1) During short distance motions, the axis speed may not reach the maximum value stated.

Note 2) Without controller.

Note 3) This value is equivalent continuous A-weighted sound pressure level that applied with ISO11201(EN31201).
This value is measured with the following conditions.
- Maximum load and speed. Operating mode is AUTO.

Note 4) This is a level of protection that can be used in environments where only non-conductive pollution occurs (for example, the environment in which non-waterproof home electronics and office equipment are used).
If this restriction is not followed, it may cause a death or serious accident due to the electric shock.

iRVision AI良否判定

FANUC Robot ER-4iA

特點

- 以AI人工智慧對工件進行OK、NG的良否判定
- iRVision的設定畫面，操作簡單
- 只需要拍照，提供數個樣本讓AI學習
- 以機器人控制器進行AI機械學習的運算，不需要額外的AI硬體

