

GXA-S series

CNC Rotary Table

High - Power Pneumatic Clamp



G X A - 1 7 0 S

- Vertical & horizontal application
- Vertical application
- worm gear transmission
- new optimization model
- table size
- superior pneumatic clamp

- Worktable diameter Ø125, Ø170, Ø210, Ø255
- Exclusive patented dual pneumatic piston braking system.(P.19)
- Higher rotation speed.
- Equipped with high precision cross roller.
- Full gear depth transmitted by dual lead worm drive, resulting in higher efficiency and lower backlash.(P.20)



Equipped with upgraded high precision cross roller bearing

SPECIFICATIONS

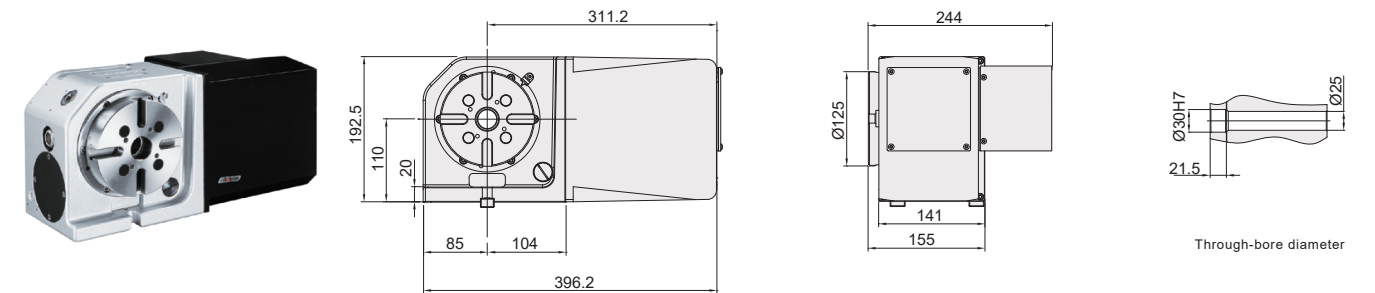
MODEL	Unit	GXA-125S	GXA-170S	GXA-210S GXA-250S	GXA-170S-2W-250	
Worktable diameter	mm / inch	Ø125 / Ø 4.92	Ø170 / Ø 6.69	Ø210 / Ø 8.27 Ø255 / Ø 10.04	Ø170 / Ø 6.69	
Center bore diameter	mm / inch	Ø30H7 / Ø 1.18H7	Ø40H7 / Ø 1.57H7	Ø65H7 / Ø 2.56H7	Ø40H7 / Ø 1.57H7	
Through-bore diameter	mm / inch	Ø25 / Ø 0.98	Ø40 / Ø 1.57H7	Ø65 / Ø 2.56H7	Ø40 / Ø 1.57H7	
Pitch of rotary axis	mm / inch	N/A	N/A	N/A	250 / 9.84	
Height of table (horizontal)	mm / inch	155 / 6.10	175 / 6.89	175 / 6.89 190 / 7.48	175 / 6.89	
Height of table (vertical)	mm / inch	110 / 4.33	135 / 5.31	160 / 6.3	135 / 5.31	
Width of T-slot	mm / inch	12H7 / 0.47H7	12H7 / 0.47H7	12H7 / 0.47H7	12H7 / 0.47H7	
Width of guide block	mm / inch	18 / 0.71	18 / 0.71	18 / 0.71	18 / 0.71	
Clamping method / pressure	MPa / psi	Pneumatic 0.55 ~ 0.7 / 79.8-101.5	Pneumatic 0.55 ~ 0.7 / 79.8-101.5	Pneumatic 0.55 ~ 0.7 / 79.8-101.5	Pneumatic 0.55 ~ 0.7 / 79.8-101.5	
Clamping torque	Nm /ft. lbs.	140	300	400	300	
Servo motor spec		refer to page 69				
Transmission ratio		1 / 40	1 / 60	1 / 72	1/90	
Max. table speed	min ⁻¹	66.6	53.3	53.3	22.2	
Standard loading inertia*	$\frac{W \cdot D^2}{8}$ Kg.m ²	0.2	0.72	1.38	0.54	
Maximum loading inertia*	$\frac{W \cdot D^2}{8}$ Kg.m ²	1	3	5	2.5	
Resolution	deg.	0.001	0.001	0.001	0.001	
Indexing accuracy	sec.	40	20	20	20	
Repeatability	sec.	6	6	6	6	
Net weight (servo motor excluded)	kg / lb	32 / 70.40	51.5 / 113.3	60 / 132 66.3 / 145.86	115 / 253.5	
Allowable loading capacity	Vertical	kg / lb	50 / 110	100 / 220	125 / 275	75 / 165
	Horizontal	kg / lb	100 / 220	200 / 440	250 / 550	150 / 330
	Tailstock applied	kg / lb	100 / 220	200 / 440	250 / 550	150 / 330
Allowable load (when table clamped)		N / lbs	9700 / 2176.68	14000 / 3141.6	17000 / 3814.8	14000 / 3141.6
		Nm /ft. lbs.	410 / 302.17	1020 / 751.74	1265 / 932	1020 / 751.74
		Nm /ft. lbs.	140 / 103.8	300 / 221.1	400 / 294.8	300 / 221.1
Allowable cutting torque		Nm /ft. lbs.	85 / 62.65	200 / 147.41	260 / 191.62	200 / 147.41
Allowable Max. rotary joint quantity			4	4	4	

Note: 1. Allowable cutting torque at table speed of 1 min⁻¹.
2. Standard loading inertia * is allowed in max table speed. Contact detron for the necessary adjustment of speed and others when maximum loading inertia * is required.

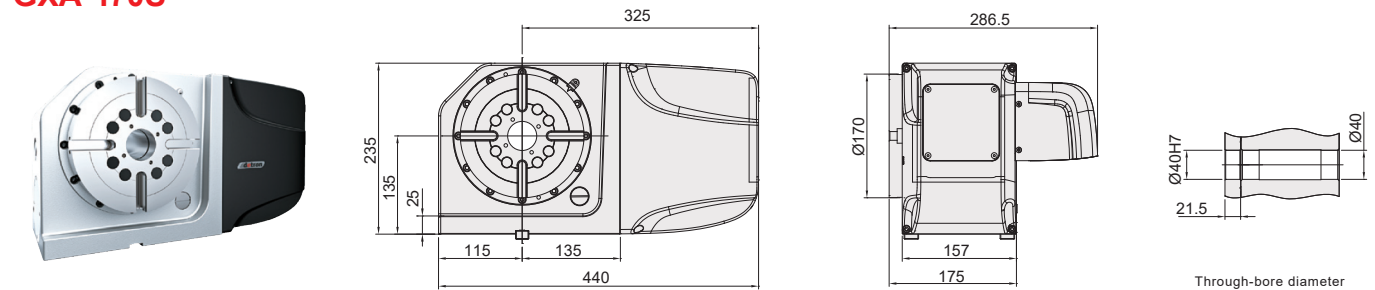
DIMENSIONAL DRAWINGS

Unit : mm

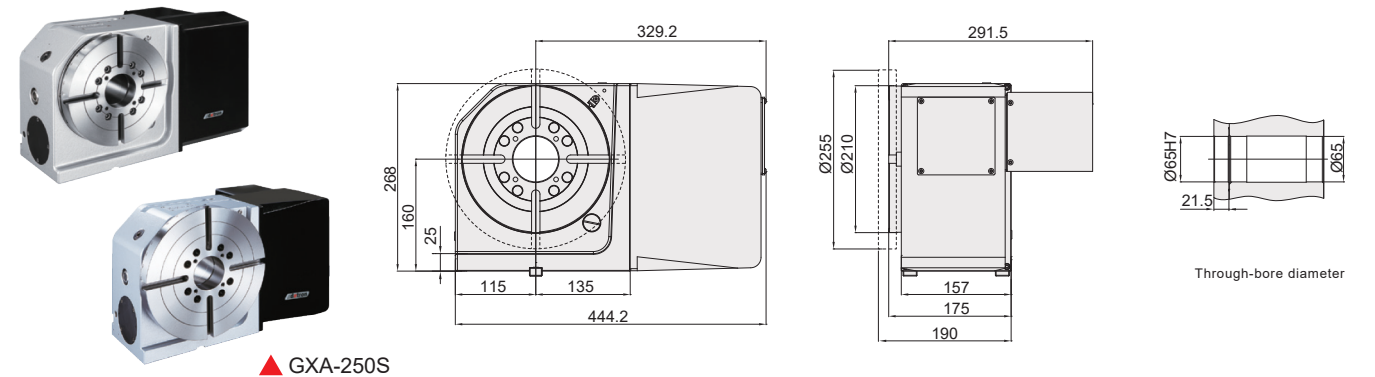
GXA-125S



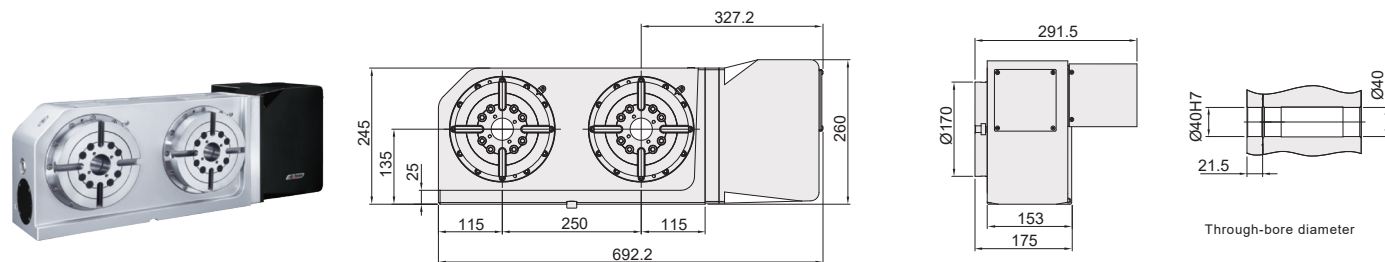
GXA-170S



GXA-210S / GXA-250S



GXA-170S-2W-250



Note: The length of servo guard may vary with servo motor type.
(the metal sheet dimensions shown above are based on Fanuc motor)