

可調式頂針

ADJUSTMENT WATER-PROOF TYPE

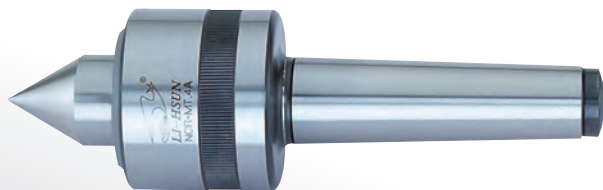


RPM: 1500 - 5000 MT/MK. 3, 4, 5, 6

www.lihsun.com

NCR

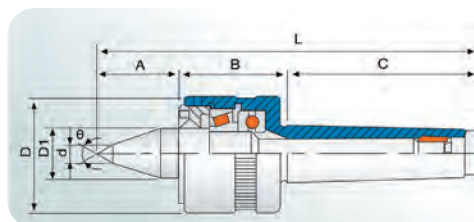
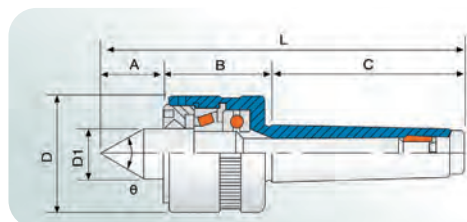
型 LIVE CENTER



A-TYPE



B-TYPE



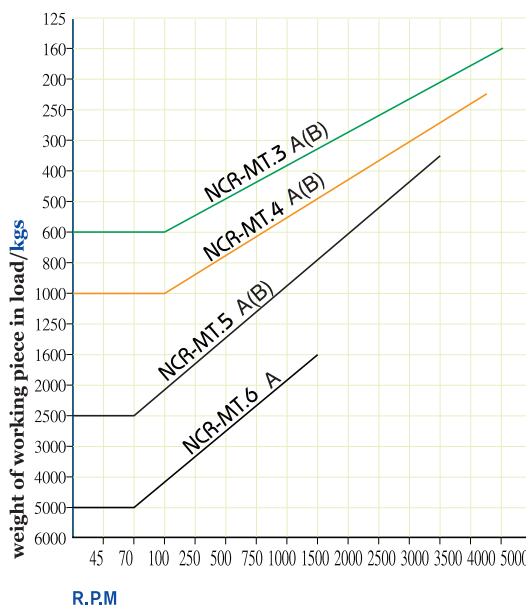
1. 心軸使用合金工具鋼之材質，經真空熱處理(HRC60° ± 1°) 具高鋼性及耐磨性。
2. 此頂針使用錐狀、止推以及滾針軸承之組合。
3. 適用於中、重負荷使用，具防水性。
4. 車床尾座調整壓力建議5~8公斤。

※ 防水設計

1. The shaft uses alloy steel and hardened through vacuum heat treatment to (HRC60° ± 1°).
2. The center uses the combination of taper roller bearing, thrust bearing and needle bearing.
3. Applicable to medium and heavy loads, the waterproof is maze type.
4. The tailstock pressure of lathe adjusts to five to eight kilograms (for reference)
5. The center is adjustable to reach original loading capacity after using for a long period of time.

※ Long nose live centers are suitable for small workpieces.

※ Waterproof design.



單位/Unit:mm

ORDER NO.	MORES TAPER MT/MK	A	B	C	D	D1	d	L	Co精度 Accuracy	Max R.P.M	θ	G.W. WEIGHT kgs	包裝尺寸 L x W x H
08070003	NCR-MT.3A	37	47	86	50	25	-	170	0.003	5000R.P.M	60°	1.12 kgs	240 x 80 x 65
08070004	NCR-MT.4A	45	59	108	65	32	-	212	0.003	4500R.P.M	60°	2.44 kgs	263 x 100 x 90
08070005	NCR-MT.5A	50	62	136	80	40	-	248	0.003	3500R.P.M	60°	4.32 kgs	320 x 118 x 110
08070006	NCR-MT.6A	78	85	189	128	60	-	352	0.008	1500R.P.M	60°	15.12 kgs	425 x 185 x 180
08070013	NCR-MT.3B	47	47	86	50	25	10	180	0.003	5000R.P.M	60°	1.13 kgs	240 x 80 x 65
08070014	NCR-MT.4B	60	59	108	65	32	12	227	0.003	4500R.P.M	60°	2.46 kgs	263 x 100 x 90
08070015	NCR-MT.5B	70	62	136	80	40	14	268	0.003	3500R.P.M	60°	4.52 kgs	320 x 118 x 110

