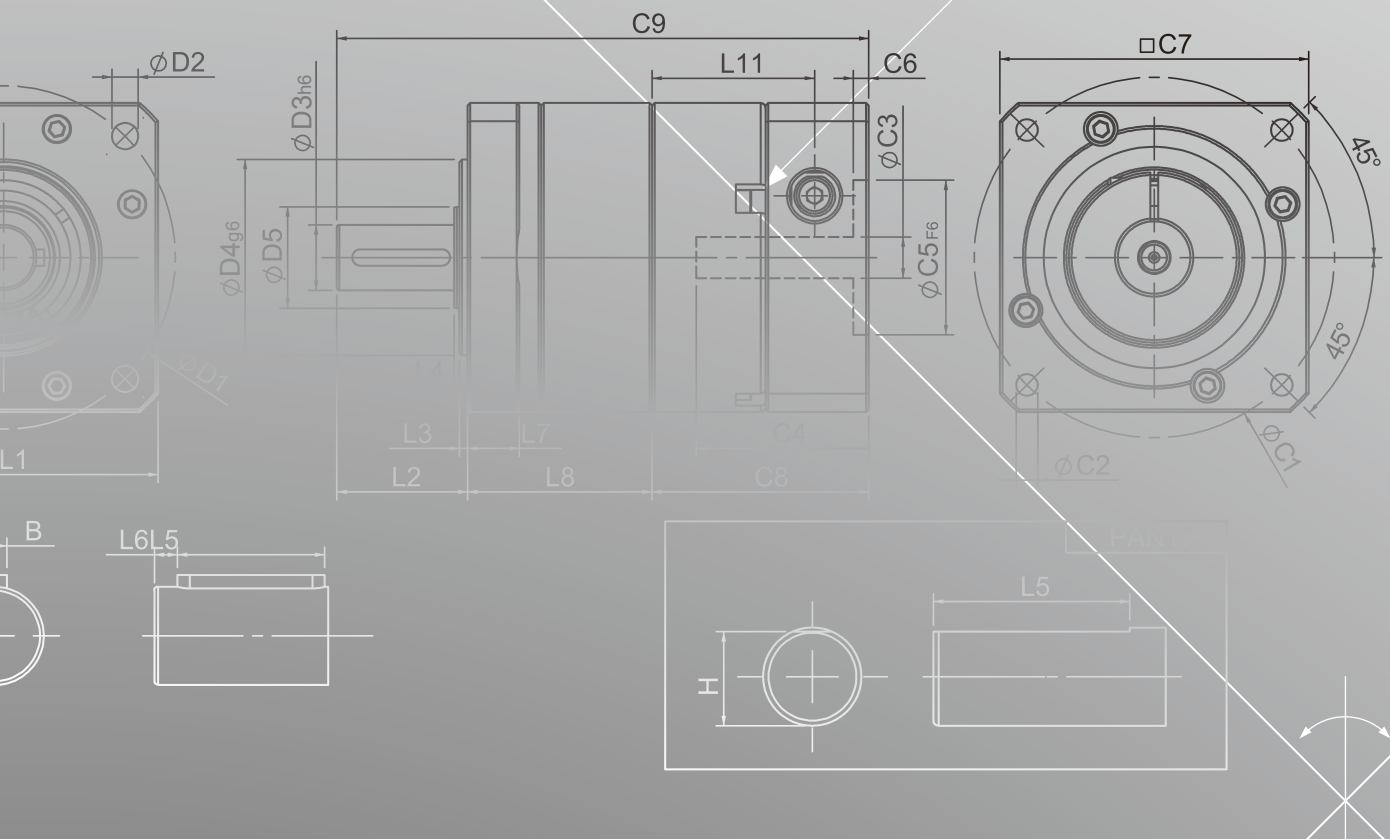
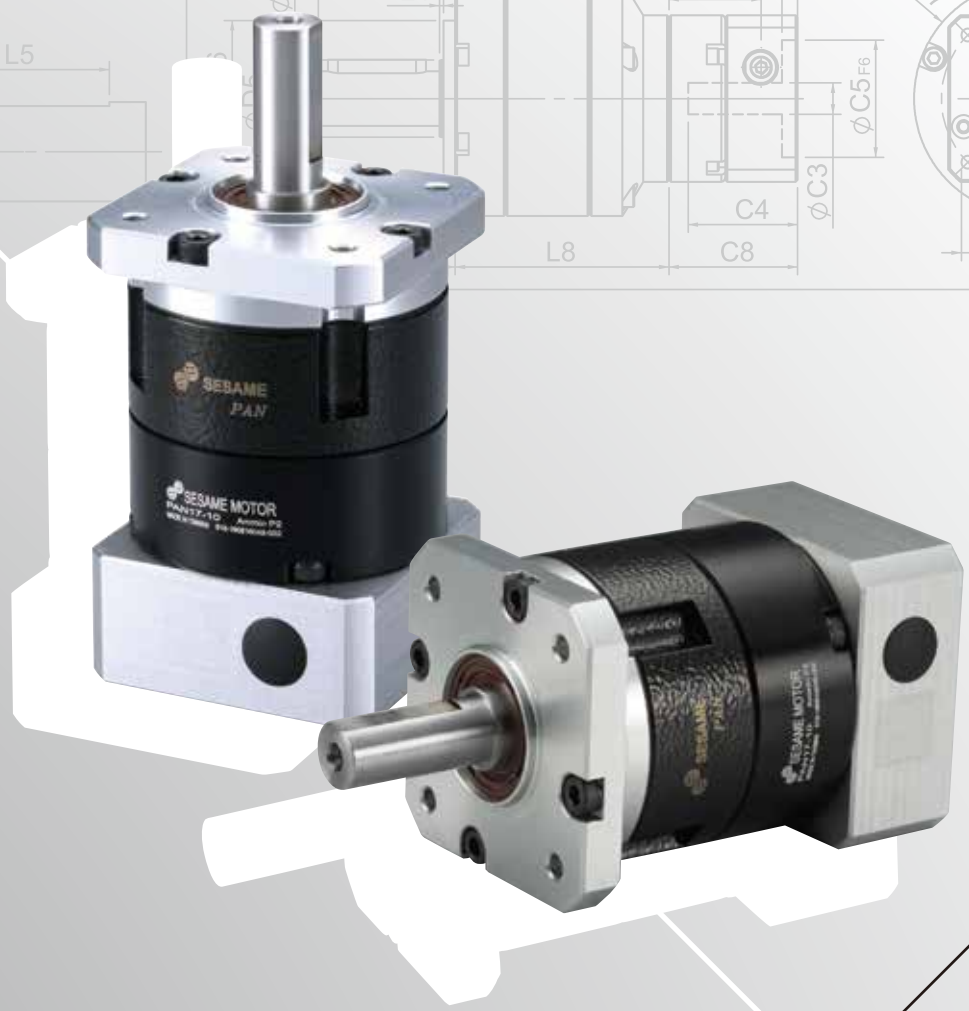
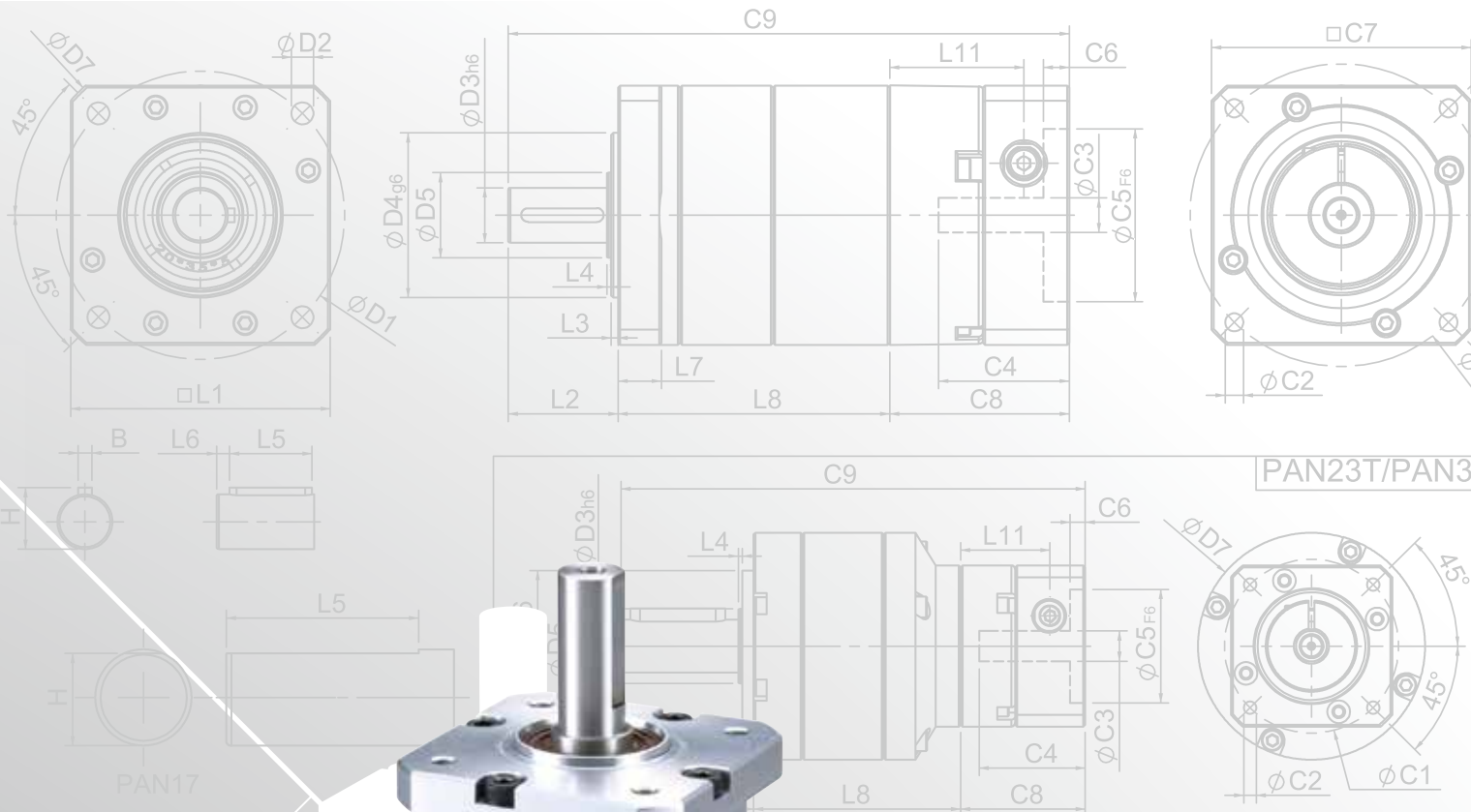
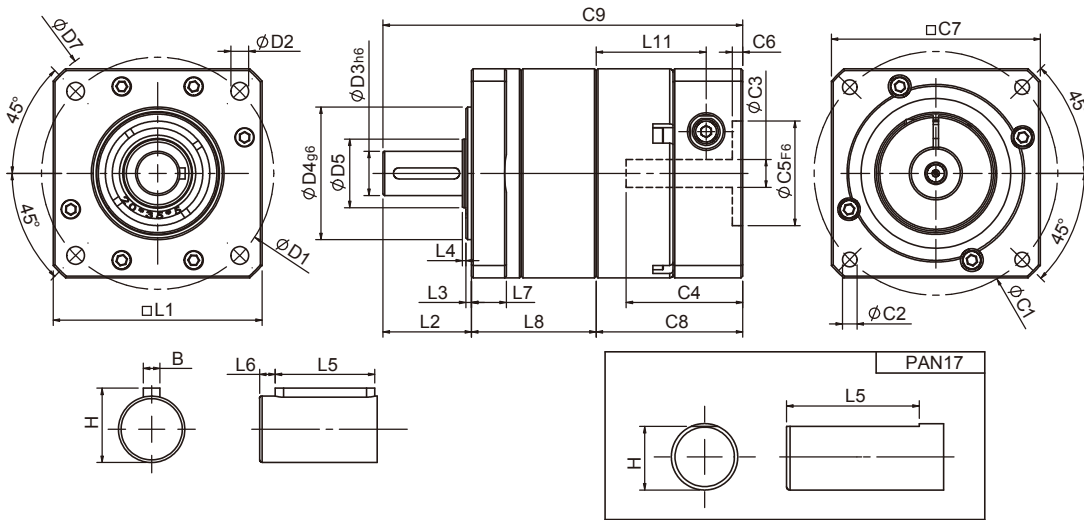


PAN SERIES





PAN Single Stage Dimensions PAN單段外型尺寸圖



Specifications 規格

Unit:mm

尺寸 Dimensions	PAN17	PAN23	PAN34	PAN42	PAN56
D1	43.8	66.67	98.425	125.73	177.8
D2	3.25	5.1	5.6	7.1	10.2
D3 _{h6}	9.525	12.7	19.05	25	25
D4 _{g6}	21.97	38.1	73.025	55.55	114.3
D5	12	20	35	32	-
D7	56	80	118	148	195
L1	42.6(44)	60	90	115	145
L2	25.4	25.4	31.75	42	41
L3	1.6	1.6	1.7	2.4	4
L4	1	1	1	2	-
L5	19.05	19.05	25.4	32	32
L6	-	3	3	4	4
L7	6.5	10	12	19	20
L8	28.8	35.8	43.5	67.4	68.4
L11	26.9	31.6	37.3	51.8	51.8
C1 ²	46	70	90	145	145
C2 ²	M4x0.7P	M5x0.8P	M6x1.0P	M8x1.25P	M8x1.25P
C3 ²	≤8/≤11	≤14/≤19	≤19/≤24/≤28	≤24/≤32/≤38	≤24/≤32/≤38
C4 ²	26.5	33.5	41	51.5	51.5
C5 ² _{F6}	30	50	70	110	110
C6 ²	4	4	6	6	6
C7 ²	42.6	60	90	130	130
C8 ²	36.4	42.1	51.5	68	68
C9 ²	90.6	103.3	126.75	177.4	177.4
B	-	3.175	4.763	8	8
H	9.14	14.1	21.1	28	28

★ 10比時,L1=44.

★ C1~C9是公製標準馬達連接板尺寸,請依所選用的馬達決定.

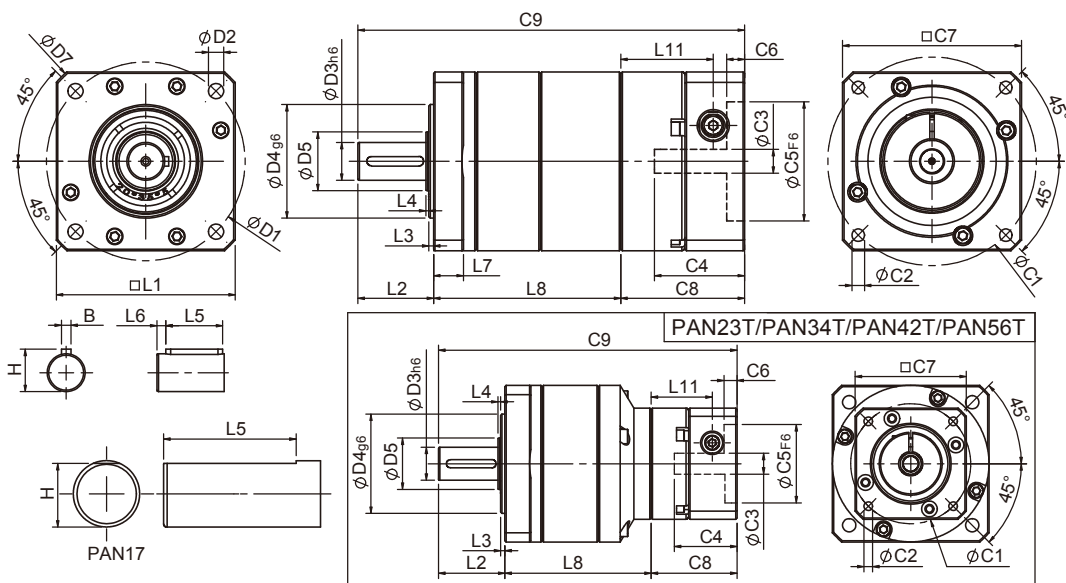
★ 本公司有權針對以上數據規格逕行設計變更不先行告知.

★ L1=44 when gear ratio is 10.

★ C1~C9 are motor specific dimensions(metric std shown), Size may vary according to motor flange.

★ Specification subject to change without notice.

PAN Double Stage Dimensions PAN雙段外型尺寸圖



Specifications 規格

Unit:mm

尺寸 Dimensions	PAN17	PAN23	PAN23T	PAN34	PAN34T	PAN42T	PAN56T
D1	43.8	66.67		98.425		125.73	177.8
D2	3.25	5.1		5.6		7.1	10.2
D3 _{h6}	9.525	12.7		19.05		25	25
D4 _{g6}	21.97	38.1		73.025		55.55	114.3
D5	12	20		35		32	-
D7	56	80		118		148	195
L1	42.6(44)	60		90		115	145
L2	25.4	25.4		31.75		42	41
L3	1.6	1.6		1.7		2.4	4
L4	1	1		1		2	-
L5	19.05	19.05		25.4		32	32
L6	-	3		3		4	4
L7	6.5	10		12		19	20
L8	51.25	62.8	56.1	77.3	72.8	105.5	106.5
L11	23.4	31	23.4	37.3	31	37.3	37.3
C1 ²	46	70	46	90	70	90	90
C2 ²	M4x0.7P	M5x0.8P	M4x0.7P	M6x1.0P	M5x0.8P	M6x1.0P	M6x1.0P
C3 ²	≤8/≤11	≤14/≤19	≤8/≤11	≤19/≤24/≤28	≤14/≤19	≤19/≤24/≤28	≤19/≤24/≤28
C4 ²	26.5	33.5	26.5	41	33.5	41	41
C5 ² _{F6}	30	50	30	70	50	70	70
C6 ²	4	4	4	6	4	6	6
C7 ²	42.6	60	42.6	90	60	90	90
C8 ²	32.9	41.5	32.9	51.5	41.5	51.5	51.5
C9 ²	109.55	129.7	114.4	160.55	146.05	199	199
B	-	3.175		4.763		8	8
H	9.14	14.1		21.1		28	28

★ 100比時,L1=44.

★ C1~C9是公製標準馬達連接板尺寸,請依所選用的馬達決定.

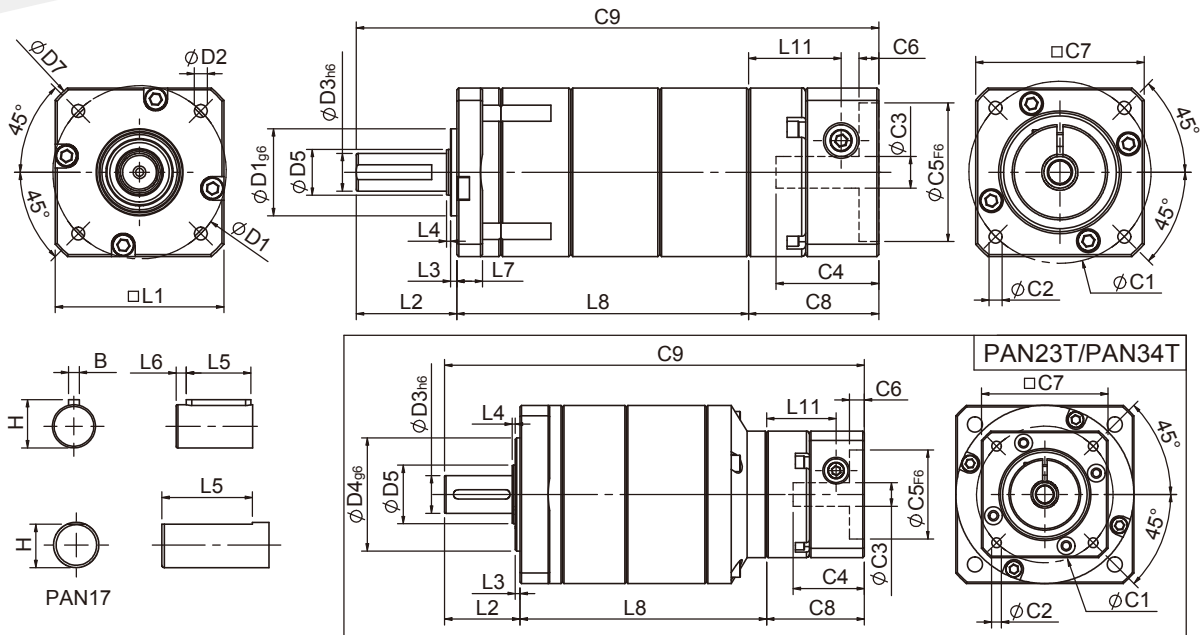
★ 本公司有權針對以上數據規格進行設計變更不先行告知.

★ L1=44 when gear ratio is 100.

★ C1~C9 are motor specific dimensions(metric std shown), Size may vary according to motor flange.

★ Specification subject to change without notice.

PAN Triple Stage Dimensions PAN三段外型尺寸圖



Specifications 規格

Unit:mm

尺寸 Dimensions	PAN17	PAN23T	PAN34T
D1	43.8	66.67	98.425
D2	3.25	5.1	5.6
D3 _{h6}	9.525	12.7	19.05
D4 _{g6}	21.97	38.1	73.025
D5	12	20	35
D7	56	80	118
L1	42.6(44)	60	90
L2	25.4	25.4	31.75
L3	1.6	1.6	1.7
L4	1	1	1
L5	19.05	19.05	25.4
L6	-	3	3
L7	6.5	10	12
L8	73.7	83.1	106.6
L11	23.4	23.4	31
C1 ²	46	46	70
C2 ²	M4x0.7P	M4x0.7P	M5x0.8P
C3 ²	≤8/≤11	≤8/≤11	≤14/≤19
C4 ²	26.5	26.5	33.5
C5 ² _{F6}	30	30	50
C6 ²	4	4	4
C7 ²	42.6	42.6	60
C8 ²	32.9	32.9	41.5
C9 ²	132	141.4	179.85
B	-	3.175	4.763
H	9.14	14.1	21.1

* 1000比時,L1=44.

* C1~C9是公製標準馬達連接板尺寸,請依所選用的馬達決定.

* 本公司有權針對以上數據規格逕行設計變更不先行告知.

* L1=44 when gear ratio is 1000.

* C1~C9 are motor specific dimensions(metric std shown), Size may vary according to the motor flange chosen.

* Specification subject to change without notice.

PAN Specifications Table PAN性能規格共表

規格 Specifications	節數 Stage	減速比 Ratio	PAN-17	PAN-23	PAN-34	PAN-42	PAN-56		
額定輸出力矩 T_{2N} Nominal Output Torque	1	3	9	28	85	200	200		
		4	10	32	80	215	215		
		5	11	35	95	215	215		
		7	10	28	85	200	200		
		9	8	23	75	195	195		
	10	8	21	65	180	180			
	2	節數 Stage	減速比 Ratio	PAN-17	PAN-23 / PAN-23T	PAN-34 / PAN-34T	PAN-42T	PAN-56T	
		15	11	35/24	95/68	168	168		
		20	11	35/31	95/95	215	215		
		25	11	35/30	95/95	215	215		
		35	11	35/28	95/95	215	215		
		45	11	35/27	95/92	215	215		
		50	(Ratio 49) : 10	35/27	95/82	205	205		
		70	(Ratio 63) : 10	28/28	85/85	200	200		
		90	(Ratio 81) : 8	23/23	75/75	195	195		
		100	8	21/21	65/65	180	180		
	3	節數 Stage	減速比 Ratio	PAN-17	PAN-23T	PAN-34T	PAN-42T	PAN-56T	
		125	11	35	95	215	215		
		175	11	35	95	215	215		
		225	11	35	95	215	215		
245		11	35	95	215	215			
315		11	35	95	215	215			
405		11	35	95	215	215			
567		10	28	85	200	200			
729	8	23	75	195	195				
1000	8	21	65	180	180				
急停力矩 T_{2NOT} Emergency Stop Torque	N • m	2.5 倍額定輸出力矩 (2.5 times of Nominal Output Torque) * 最大輸出力矩 Max. Output Torque T_{2B} = 60% of Emergency Stop Torque)							
額定輸入轉速 n_{1N} Nominal Input Speed	rpm	1,2,3	3-1000	4000	4000	3000	2500	2500	
最大輸入轉速 n_{1max} Max. Input Speed	rpm	1,2,3	3-1000	6000	6000	6000	5000	5000	
標準背隙 Standard Backlash P2	arcmin	1 2 3	3-10 15-100 125~1000	≤ 9 ≤ 12 ≤ 15	≤ 8 ≤ 10 ≤ 12	≤ 7 ≤ 9 ≤ 12	≤ 6 ≤ 8 ≤ 12	≤ 6 ≤ 8 ≤ 12	
扭轉剛性 Torsional Rigidity	N • m /arcmin	1,2,3	3-1000	1.2	3.5	8.5	17	17	
容許徑向力 F_{2rB}^1 Max. Radial Load	N	1,2,3	3-1000	580	960	2160	4760	4760	
容許軸向力 F_{2aB}^1 Max. Axial Load	N	1,2,3	3-1000	410	430	1100	2630	2630	
使用溫度 Operating Temp.	°C	1,2,3	-10°C ~ +90°C						
使用壽命 Service Life	hr	1,2,3	20,000(10,000 連續運轉 Continuous operation)						
效率 Efficiency	%	1 2 3	3-10 15-100 125~1000	≥ 95% ≥ 90% ≥ 85%					
重量 Weight	kg	1 2 3	3-10 15-100 125~1000	0.5 0.7 0.8	1.1 1.5/1.3 1.7	2.8 4.2/3.1 4.5	6.3 7.9 9.3	6.6 8.2 9.6	
安裝方向 Mounting Position	-	1,2,3	任意方向 Any direction						
噪音值 Noise Level ²	dBA/1m	1,2,3	3-1000	60	63	66	67	67	
防護等級 Protection Class	-	1,2,3	IP 65						
潤滑 Lubrication	-	1,2,3	全合成潤滑油脂 Synthetic Lubricant						
減速機轉動慣量 Inertia (J1)									
節數 Stage	減速比 Ratio	單位 unit	PAN-17(ψ8)	PAN-23(ψ14)	PAN-34(ψ19)	PAN-42(ψ24)	PAN-56(ψ24)		
1	3	Kg • cm ²	0.04	0.23	0.77	2.30	2.30		
	4		0.03	0.21	0.67	1.92	1.92		
	5~10		0.03	0.21	0.61	1.71	1.71		
2	15		PAN-17(ψ8)	PAN-23(ψ14) / PAN-23T(ψ8)	PAN-34(ψ19) / PAN-34T(ψ14)	PAN-42T(ψ19)	PAN-56T(ψ19)		
	其它比數 Other ratios		0.04	0.23(0.04)	0.77(0.23)	0.77	0.77		
3	所有比數 All ratios		0.03	0.03	0.21	0.61	0.61		

* 1. 輸出轉速 100rpm 時，作用於輸出軸中心位置。Applied to the output shaft center @100rpm.
 * 2. 3000rpm 空載量測。Measured at 3000 rpm with no load. These values are measured by gearbox with ratio = 10 (1-stage) or ratio = 100 (2-stage) at nominal input speed or 3000 rpm (if nominal input speed is higher than 3000 rpm) with no load.
 ※本公司有權對以上數據規格進行設計變更不先行告知。The above figures/specifications are subject to change without prior notice.