

## SER/L..CL

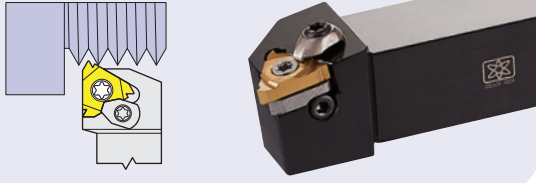
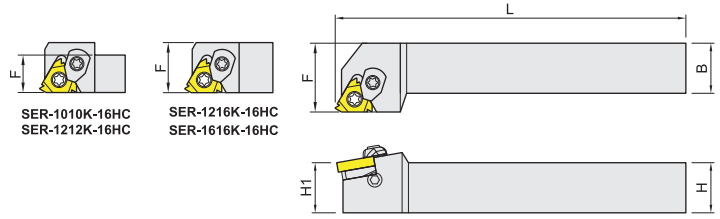


FIG-1



## SER/L

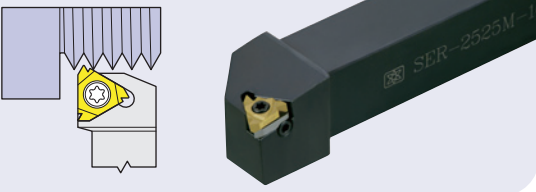
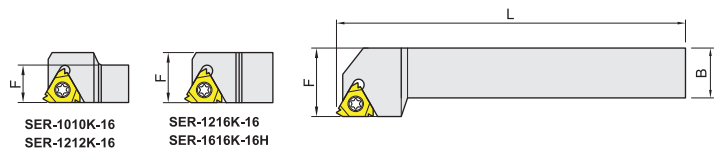


FIG-2



Right-hand shown

FIG-1 Item code 雙重鎖固SCREW+CLAMP	Spare parts	FIG-2 Item code 螺絲鎖固SCREW	Spare parts	Dimensions,mm				Insert		Weight Kg
				H(H1)	B	L	F	螺紋加工 Threading	槽加工 Grooving	
SER/L-1616K-16CL	④	SER/L-1616K-16	③	16	16	125	20	16ER/L	16...G	0.29
SER/L-2020K-16CL		SER/L-2020K-16		20	20	125	25			0.45
SER/L-2525M-16CL		SER/L-2525M-16		25	25	150	32			0.84
SER/L-3232P-16CL		SER/L-3232P-16		32	32	170	40			1.51
NEW SER -2525M-22CL	⑥	SER/L-2020K-22	⑤	20	20	125	25	22ER/L	--	0.45
		SER/L-2525M-22		25	25	150	32			0.84
		SER/L-3232P-22		32	32	170	40			1.51
		SER/L-2525M-27	⑦	25	25	150	32	27ER/L	--	0.84
		SER/L-3232P-27		32	32	170	40			1.51

FIG-1 Item code 雙重鎖固SCREW+CLAMP	Spare parts	FIG-2 Item code 螺絲鎖固SCREW	Spare parts	Dimensions,mm				Insert		Weight Kg
				H(H1)	B	L	F	螺紋加工 Threading	槽加工 Grooving	
SER/L-1010K-16HC	②		①	10	10	125	10	16ER/L	16...G	0.11
SER/L-1212K-16HC				12	12	125	12			0.17
SER/L-1216K-16HC		SER/L-1216K-16		12	16	125	16			0.23
		SER/L-1010K-16H	①	10	10	125	10			0.11
		SER/L-1212K-16H		12	12	125	12			0.15
		SER/L-1216K-16H		12	16	125	16			0.23
		SER/L-1616K-16HC		16	16	125	16			0.26

※走心式刀 SWISS-TYPE

※裝插槽刀片時，加工深度及最小加工徑會因刀桿實際狀況而異(The application depth and minimum working diameter will be various according to situation of setting grooving insert.)