

# SUPER DIVIDER

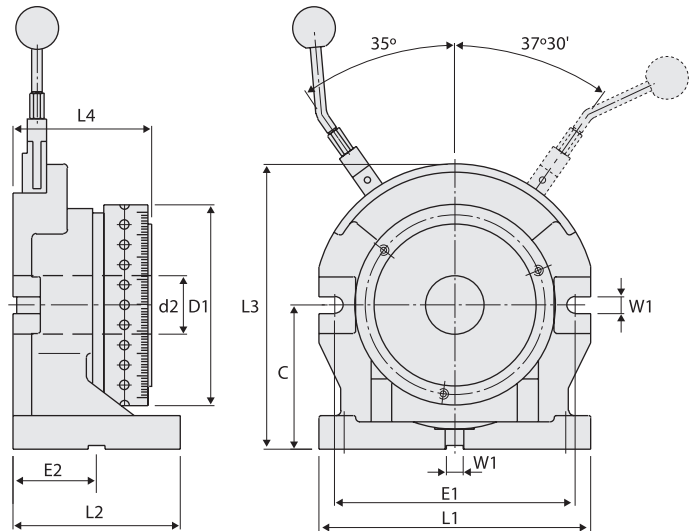
## Model: HSD-7"

- Superior accuracy
- "One-Touch" Operation
- Saves energy



### OPTIONAL ACCESSORY:

- 7" 3-Jaw Chuck



### SPECIFICATIONS (Material: FCD 55, Ductile Iron)

Unit: mm / inch

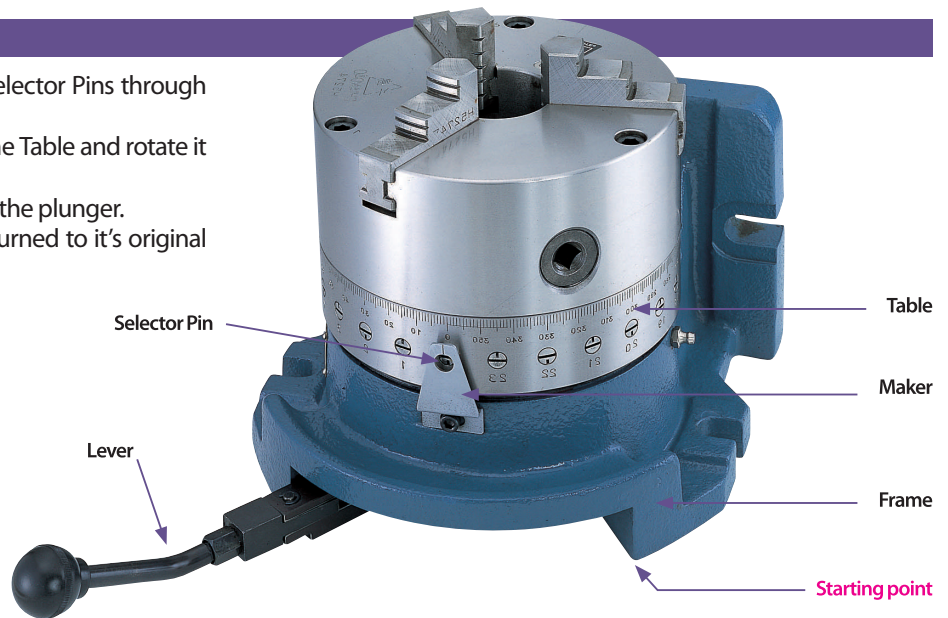
Model	DIRECT INDEXING	C		D1		E1		E2		W1		Weight (kg)
HSD-7"	2, 3, 4, 6, 8, 12, 24	138	57/16"	192	79/16"	230	91/16"	80	35/32"	16	5/8"	36
Model	L1		L2		L3		L4		Internal Dia. (d2)		Permissible Load	
HSD-7"	260	101/4"	160	61/4"	273	103/4"	132	513/64"	Max. 56 (21/4")		Max. 50kg (110 lb)	

**IMPORTANT:**

For repeated operation, make sure the Lever is always turned back to the starting point after each dividing operation.

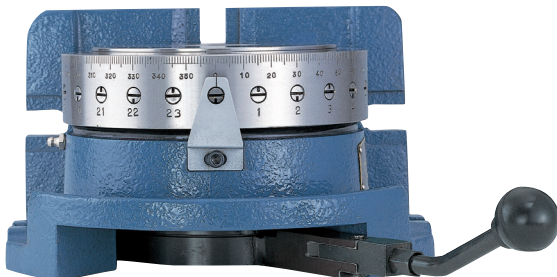
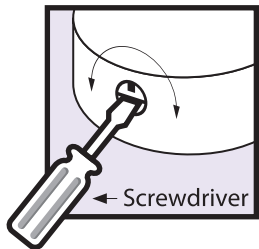
**OPERATION**

- Set the divisions by turning the required Selector Pins through half a turn with a Screw Driver.
- Moving the Lever clockwise will unclamp the Table and rotate it to the next selected division.
- The Table will be stopped at the division by the plunger.
- The Table is clamped when the Lever is returned to it's original position.



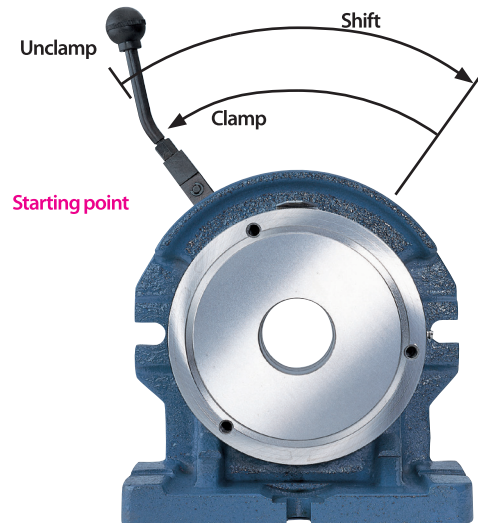
**EASY SELECTION OF DIVIDING POSITIONS**

The division are easily and quickly set by simply turning the Selector Pins through half a turn with a Screwdriver.



**ONE ACTION POSITIONING**

Only one hand is required to unclamp, index and clamp the Table due to the unique 'HOMGE' design. Lever action is light and quick.



**CAUTION**

- Do not move the Lever until the Divider has been fitted on the machine table. The Lever can only be operated once the unit is clamped firmly on the machine.
- Always return the Lever to the clamped position after each movement to prevent jamming.
- Do not force the Lever if it jams through mis-operation, simply turn the Selector Pin to the passing position in order to free the Lever.
- Do not commence machining until the plunger has stopped the Table from rotating and the Lever has been returned to the clamped position.