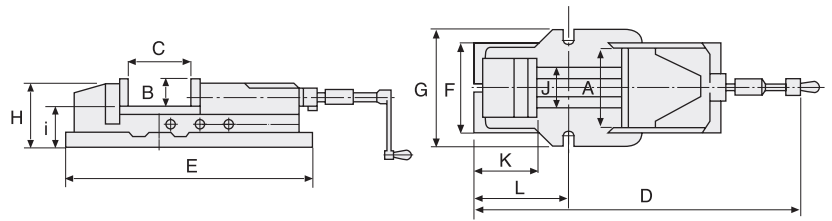




## HYDRAULIC MACHINE VISE

Model: HH-100, 125, 150, 200

- Constructed with HYDRAULIC CYLINDER, which absorbs cutting vibration and improves the precision of machining whilst maintaining a high clamping force.
- The clamping force can be adjusted accurately by use of a DIAL.
- Vise Body is made of high tensile cast iron. The Sideways are hardened and ground to ensure rigidity, durability and minimal deformation.
- The vise Jaws are made of a special hardened ALLOY STEEL and are precision ground.



### SPECIFICATIONS

Unit: mm

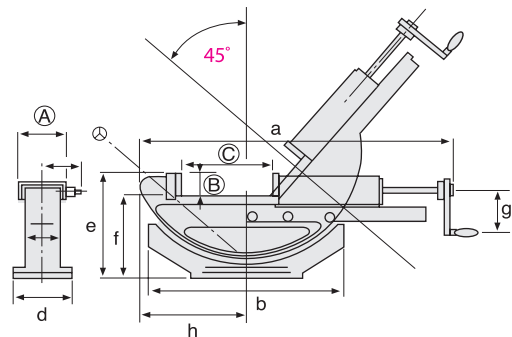
| Model  | A   | B  | C   | D   | E   | F   | G   | H   | I    | J   | K   | L   | Clamping force | Weight(kg) Body | Weight (kg) Swivel Base |
|--------|-----|----|-----|-----|-----|-----|-----|-----|------|-----|-----|-----|----------------|-----------------|-------------------------|
| HH-100 | 105 | 36 | 170 | 525 | 440 | 135 | 170 | 95  | 58   | 80  | 110 | 147 | 2500           | 21              | 7                       |
| HH-125 | 130 | 48 | 220 | 670 | 550 | 175 | 207 | 120 | 70.5 | 97  | 125 | 195 | 3000           | 38              | 8                       |
| HH-150 | 150 | 53 | 300 | 800 | 620 | 182 | 225 | 135 | 82.5 | 116 | 130 | 210 | 4500           | 53              | 11                      |
| HH-200 | 200 | 62 | 300 | 900 | 680 | 260 | 280 | 162 | 100  | 160 | 159 | 260 | 8000           | 95              | 13                      |



## TILTING HYDRAULIC MACHINE VISE

Model: HW-100, 150

- Constructed with the same specifications as the HH-Type above.
- Having the added tilting function it is particularly well suited to many jig and fixture making applications as well as being more versatile for general machining work.



### SPECIFICATIONS

Unit: mm

| Model  | A   | B  | C   | a   | b   | d   | e   | f   | g   | h   | Clamping Force(kg) | Weight(kg) Body | Weight (kg) Swivel Base |
|--------|-----|----|-----|-----|-----|-----|-----|-----|-----|-----|--------------------|-----------------|-------------------------|
| HW-100 | 105 | 36 | 170 | 547 | 340 | 165 | 191 | 155 | 80  | 170 | 2500               | 26              | 7                       |
| HW-150 | 150 | 53 | 300 | 790 | 435 | 225 | 250 | 197 | 100 | 200 | 4500               | 70              | 11                      |