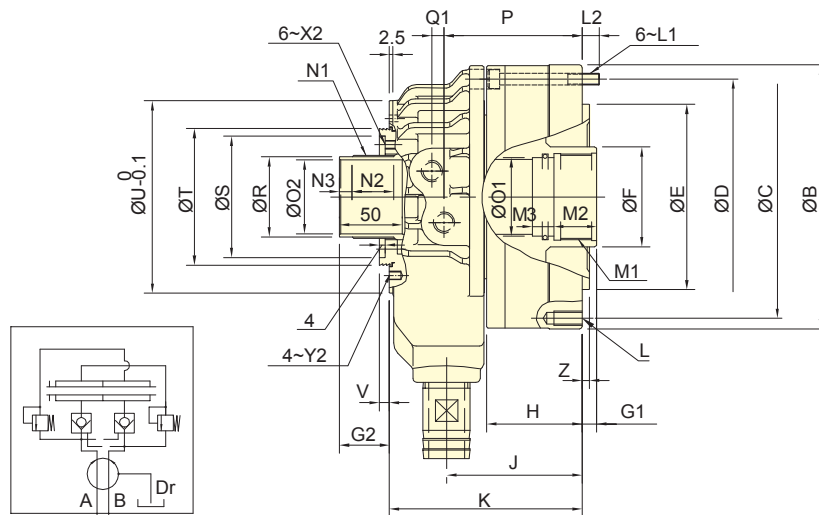
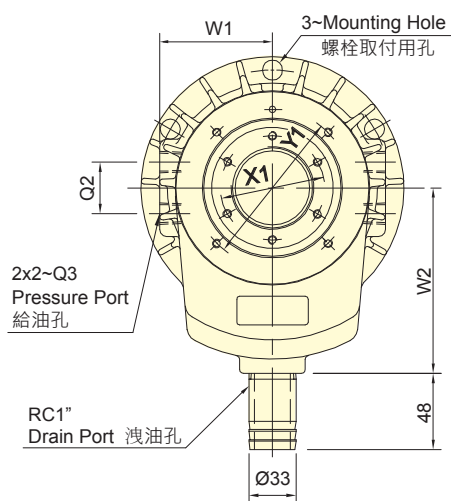


- 超短·大孔徑型迴轉油壓缸·全長僅為從來型的2/3。
- 內建逆止閥自鎖機構及壓力洩壓閥。
- 安裝時可由後端鎖固之。
- Super short form, light weight large Through-Hole, just as 2/3 of typical model length.
- Built-in safety check valves and pressure relief valves.
- Can screw it from the rear end of the cylinder when mounting.
- 可附加線性定位系統機構。(選購品)
- Linear sensor can be attached.(optional)
- 專利產品字號 Patent numbers :  
台灣 : PAT.NO.M491534(Taiwan)  
大陸 : PAT.NO.ZL201420584274.5(China)



保留規格修改的權利  
Subject to technical changes

### 技術規格 SPECIFICATIONS

型號 Model	活塞面積 Eff. piston area		行程 Piston stroke	最高迴轉數 Max. speed	最高使用壓力 Max. pressure	I Moment of inertia	重量 Weight	總洩漏量 Total oil leakage
	押側(Extend) cm <sup>2</sup>	拉側(Retract) cm <sup>2</sup>						
TK-A528	73.0	69.7	12	8000	4.5 (45)	0.012	6.2	3.0
TK-A533	73.0	69.7	12	8000	4.5 (45)	0.012	6.0	3.0
TK-C643	99.1	88.0	15	7000	4.5 (45)	0.018	7.5	3.0
TK-A646	105.0	93.9	15	7000	4.5 (45)	0.018	7.3	3.0
TK-B646	105.0	93.9	15	7000	4.5 (45)	0.018	8.6	3.0
TK-C646	99.1	88.0	15	7000	4.5 (45)	0.018	7.5	3.0
TK-B846	135.3	125.0	20	6300	4.5 (45)	0.032	12.4	3.9
TK-A853	135.3	125.0	20	6300	4.5 (45)	0.032	11.8	3.9
TK-B853	135.3	125.0	20	6300	4.5(45)	0.032	11.7	3.9
TK-A1068	170.1	155.3	25	5500	4.5 (45)	0.065	17.4	4.2
TK-A1075	170.1	155.3	25	5500	4.5(45)	0.065	18.8	4.2
TK-A1078	170.1	155.3	25	5500	4.5 (45)	0.065	17.4	4.2



外型尺寸 DIMENSIONS

Model	A	B	C	D	E	F	G1		G2		H	J	K	L	L1	L2	M1	M2	M3
	內徑 I.D.				h7		max.	min.	max.	min.									
TK-A528	105	141	125	125	110	45	12	0	38	26	49	77.5	123	6~M8x20	M8x55	14	M38x1.5	25	13
TK-A533	105	141	125	125	110	45	12	0	38	26	49	77.5	123	6~M10x20	M8x55	14	M38x1.5	25	13
TK-C643	128	156	140	140	120	65	15	0	44	29	56	85	125	12~M10x20	M8x60	12	M50x2	25	13
TK-A646	128	162	147	147	130	65	15	0	44	29	56	85	125	12~M10x20	M8x60	12	M55x2	25	13
TK-B646	128	162	130	147	100	65	15	0	44	29	66	95	135	12~M10x20	M8x70	12	M55x2	30	15
TK-C646	125	156	140	140	120	65	15	0	44	29	56	85	125	12~M10x20	M8x60	12	M55x2	25	13
TK-B846	145	185	170	165	130	70	20	0	48	28	66	95	135	12~M10x20	M8x70	12	M55x2	30	15
TK-A853	145	185	170	165	140	70	20	0	48	28	66	95	135	12~M10x20	M8x70	12	M60x2	30	15
TK-B853	145	185	170	165	130	70	20	0	48	28	66	95	135	12~M10x20	M8x70	12	M60x2	30	15
TK-A1068	170	212	190	190	160	95	25	0	50	25	74	108	158	12~M10x20	M10x80	16	M75x2	35	15
TK-A1075	170	212	190	190	160	95	25	0	50	25	74	108	158	12~M10x20	M10x80	16	M85x2	35	15
TK-A1078	170	212	190	190	160	95	25	0	50	25	74	108	158	12~M10x20	M10x80	16	M87x2	35	15

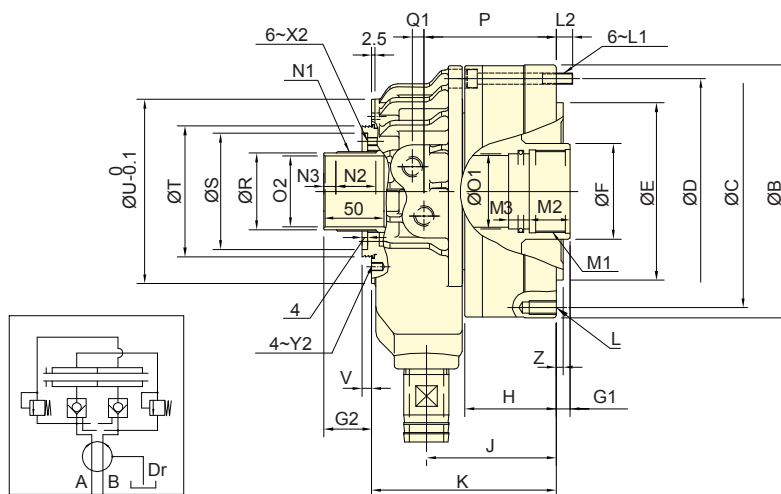
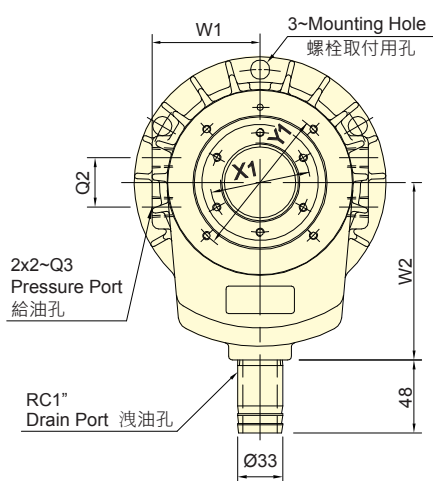
Model	N1	N2	N3	O1	O2	P	Q1	Q2	Q3	R	S	T	U	V	W1	W2	X1	X2	Y1	Y2	Z
				H8	H8					g7	H7										
TK-A528	M39x1.5	25	8	35	28	79	8.5	30	RC1/4	37	62	70	98	6	62	110	49	M6x6	83	M5x6	5
TK-A533	M39x1.5	25	8	35	33	79	8.5	30	RC1/4	37	62	70	98	6	62	110	49	M6x6	83	M5x6	5
TK-C643	M52x1.5	29	9	45	43	87	8.5	36	RC3/8	50	76	85	116	9.5	74	120	64	M6x10	98	M5x6	5
TK-A646	M52x1.5	29	9	50	46	87	8.5	36	RC3/8	50	76	85	116	9.5	74	120	64	M6x10	98	M5x6	5
TK-B646	M52x1.5	29	9	50	46	97	8.5	36	RC3/8	50	76	85	116	9.5	74	120	64	M6x10	98	M5x6	5
TK-C646	M52x1.5	29	9	50	46	87	8.5	36	RC3/8	50	76	85	116	9.5	74	120	64	M6x10	98	M5x6	5
TK-B846	M58x1.5	30	8	50	46	97	8.5	36	RC3/8	56	85	96	128	11.5	79	130	73	M6x12	110	M6x6	5
TK-A853	M58x1.5	30	8	55	53	97	8.5	36	RC3/8	56	85	96	128	11.5	79	130	73	M6x12	110	M6x6	5
TK-B853	M58x1.5	30	8	55	53	97	8.5	36	RC3/8	56	85	96	128	11.5	79	130	73	M6x12	110	M6x6	5
TK-A1068	M84x2	34	9	70	68	110	12	40	RC1/2	81	108	121	164	10	98	160	98	M6x12	155	M6x8	5
TK-A1075	M84x2	34	9	80	75	110	12	40	RC1/2	81	108	121	164	10	98	160	98	M6x12	155	M6x8	5
TK-A1078	M84x2	34	9	82	78	110	12	40	RC1/2	81	108	121	164	10	98	160	98	M6x12	155	M6x8	5

空油壓迴轉缸

\* 集水盒及行程確認裝置請參閱零件頁面。\*Coolant Collector and Confirmation Device Please See Accessories pages.



- 超短·大孔徑型迴轉油壓缸·全長僅為從來型的2/3。
- 內建逆止閥自鎖機構及壓力洩壓閥。
- 安裝時可由後端鎖固之。
- Super short form, light weight large Through-Hole, just as 2/3 of typical model length.
- Built-in safety check valves and pressure relief valves.
- Can screw it from the rear end of the cylinder when mounting.
- 可附加線性定位系統機構。(選購品)
- Linear sensor can be attached.(optional)
- 專利產品字號 Patent numbers :  
台灣 : PAT.NO.M491534(Taiwan)  
大陸 : PAT.NO.ZL201420584274.5(China)



保留規格修改的權利  
Subject to technical changes

### 技術規格 SPECIFICATIONS

型號 Model	活塞面積 Eff. piston area		行程 Piston stroke	最高迴轉數 Max. speed	最高使用壓力 Max. pressure	I Moment of inertia	重量 Weight	總洩漏量 Total oil leakage
	押側(Extend) cm <sup>2</sup>	拉側(Retract) cm <sup>2</sup>						
TK-A1287	234.0	217.5	30	3800	4.0 (40)	0.092	24.8	4.5
TK-A1291	234.0	217.5	30	3800	4.0 (40)	0.092	24.8	4.5
TK-A1511	336.4	315.2	30	3000	3.5(35)	0.38	57.9	7.0
TK-A1512	336.4	315.2	30	3000	3.5(35)	0.38	53.8	7.0
TK-2114	373.2	336.1	35	2500	3.0 (30)	0.54	58.2	8.0

### 外型尺寸 DIMENSIONS

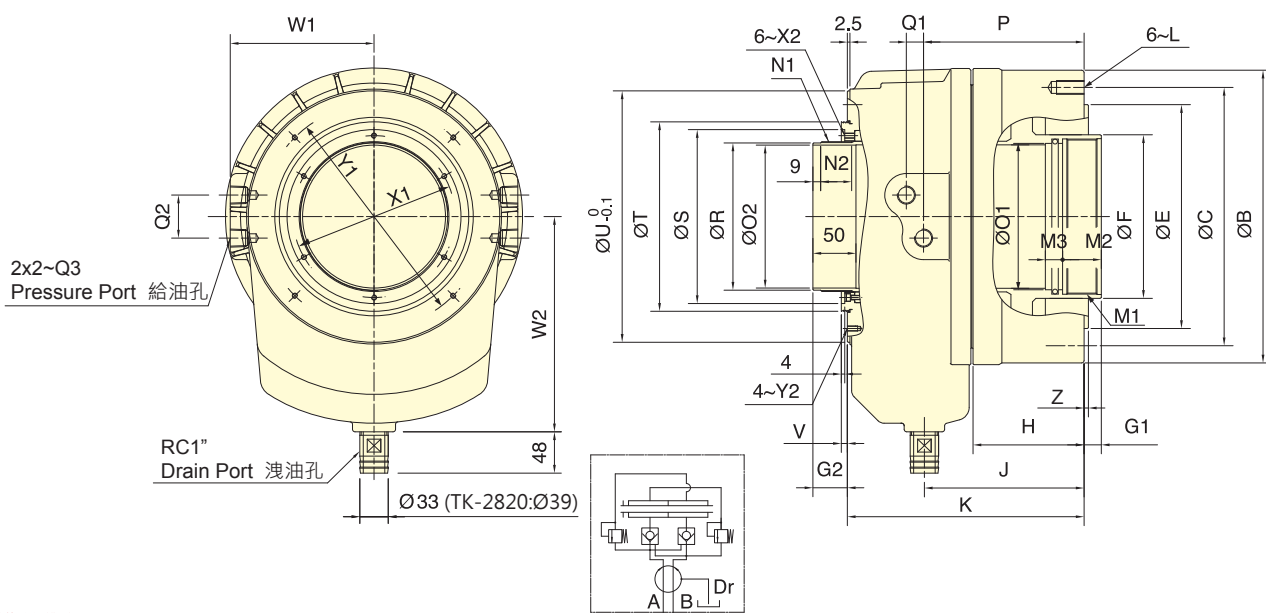
Model	A 內徑 I.D.	B	C	D	E h7	F	G1		G2		H	J	K	L	L1	L2	M1	M2	M3	N1
							max.	min.	max.	min.										
TK-A1287	200	245	215	225	180	110	30	0	59	29	86	126	184	12~M12x24	M10x90	14.5	M95x2	35	15	M99x2
TK-A1291	200	245	215	225	180	110	30	0	59	29	86	126	184	12~M12x24	M10x90	14.5	M100x2	35	15	M99x2
TK-A1511	250	300	275	275	230	140	30	0	58	28	102	156	226	12~M16x36	M12x110	21	M120x2	45	15	M129x2
TK-A1512	250	300	275	275	230	140	30	0	58	28	102	156	226	12~M16x36	M12x110	21	M130x2	45	15	M129x2
TK-2114	265	320	295	295	240	165	35	0	60	25	115	173.5	247.5	12~M16x32	M12x120	17.5	M155x2	45	20	M149x2

Model	N2	N3	O1	O2	P	Q1	Q2	Q3	R	S	T	U	V	W1	W2	X1	X2	Y1	Y2	Z
			H8	H8					g7	H7										
TK-A1287	38	9	90	87	127.5	15	45	RC1/2	96	120	138	180	7	110	185	108	M6x10	165	M6x10	5
TK-A1291	38	9	95	91	127.5	15	45	RC1/2	96	120	138	180	7	110	185	108	M6x10	165	M6x10	5
TK-A1511	38	9	115	110	153.75	17	50	RC1/2	126	150	170	227	7	134	210	138	M6x10	210	M6x9	6
TK-A1512	38	9	125	120	153.75	17	50	RC1/2	126	150	170	227	7	134	210	138	M6x10	210	M6x9	6
TK-2114	38	9	145	140	170	17	50	RC1/2	146	170	190	250	7	145	210	160	M6x10	230	M6x10	6

\* 集水盒及行程確認裝置請參閱零附件頁面。\*Coolant Collector and Confirmation Device Please See Accessories pages.



- 全新短型設計·大孔徑型迴轉油壓缸。
- 內建逆止閥自鎖機構及壓力洩壓閥。
- New design, short form, light weight large through-hole.
- Built-in safety check valves and pressure relief valves.
- 可附加線性定位系統機構。(選購品)
- Linear sensor can be attached.(optional)
- 專利產品字號 Patent numbers :  
台灣 : PAT.NO.M491534(Taiwan)  
大陸 : PAT.NO.ZL201420584274.5(China)



保留規格修改的權利  
Subject to technical changes

### 技術規格 SPECIFICATIONS

型號 Model	活塞面積 Eff. piston area		行程 Piston stroke	最高迴轉數 Max. speed	最高使用壓力 Max. pressure	I Moment of inertia	重量 Weight	總洩漏量 Total oil leakage
	押側(Extend) cm <sup>2</sup>	拉側(Retract) cm <sup>2</sup>						
TK-2416	418.4	375.4	35	2000	3.0 (30)	1.12	78.0	9.0
TK-2416L	418.4	375.4	51	2000	3.0 (30)	1.31	79.2	9.0
TK-2820	526.2	472.6	51	1600	3.0 (30)	2.4	134.0	10.0

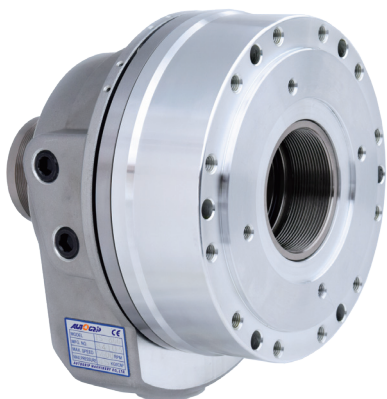
### 外型尺寸 DIMENSIONS

Model	A	B	C	E	F	G1		G2		H	J	K	L	M1	M2	M3	N1	N2
	內徑I.D.			h7		max.	min.	max.	min.									
TK-2416	290	340	300	260	190	35	0	60	25	129	185.5	275	M16x32	M180x3	45	20	M174x2	38
TK-2416L	290	340	300	260	190	51	0	76	25	145	201.5	291	M16x32	M180x3	45	20	M174x2	52
TK-2820	340	395	360	320	235	51	0	76	25	152	212.5	316	M20x40	M220x3	45	20	M218x2	52

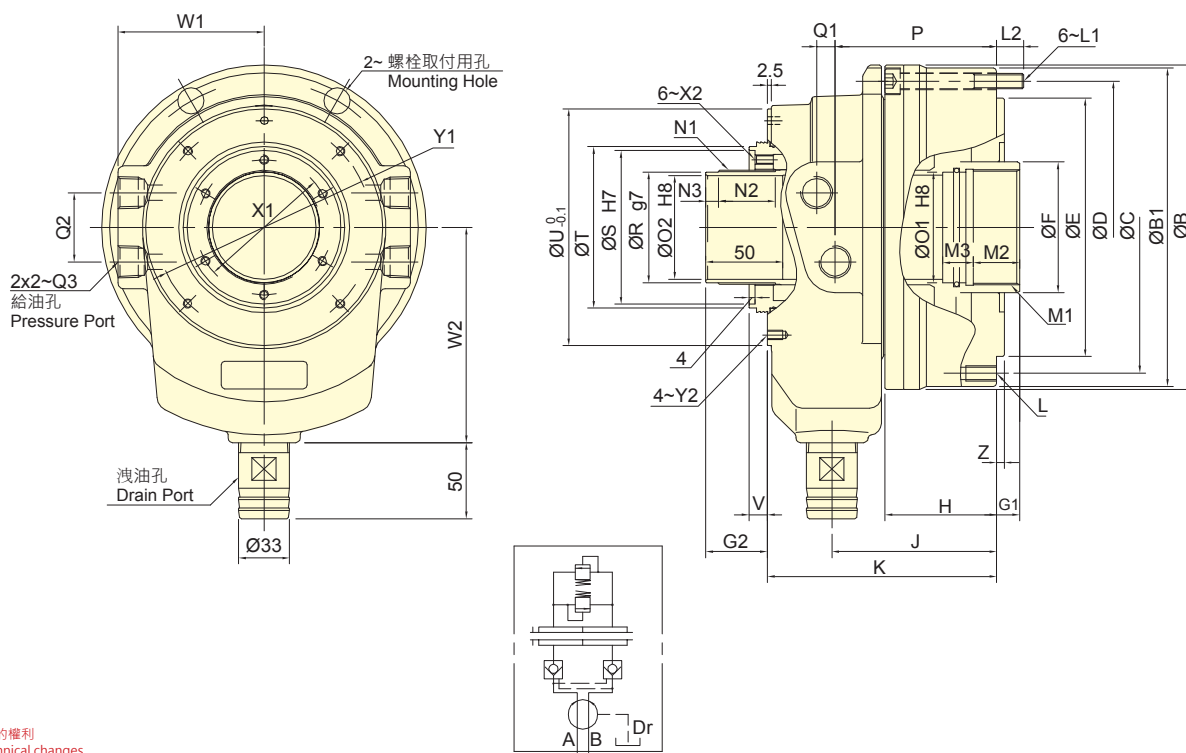
  

Model	O1	O2	P	Q1	Q2	Q3	R	S	T	U	V	W1	W2	X1	X2	Y1	Y2	Z
	H8	H8					g7	H7										
TK-2416	170	166	186.5	20	50	RC1/2	171	202	220	292	7	167	250	188	M6x11	260	M6x12	5
TK-2416L	170	166	202.5	20	50	RC1/2	171	202	220	292	7	167	250	188	M6x11	260	M6x12	6
TK-2820	210	205	216	21	50	RC1/2	215	262	285	360	7	202.5	300	240	M6x12	320	M6x12	6

\* 集水盒及行程確認裝置請參閱零附件頁面。\*Coolant Collector and Confirmation Device Please See Accessories pages.



- 全新短型設計，超大孔徑型迴轉油壓缸。
- 超大孔徑的貫通孔徑設計使加工物之貫通孔徑的範圍增大。
- 內建逆止閥自鎖機構及壓力洩壓閥。
- 安裝時可由後端鎖固之。
- Bigger bore through-hole design. Super short form, light weighted.
- Built-in safety check valves and pressure relief valves.
- Front/Rear end mounting.
- 可選購 Ø40 或 Ø60 加大排水管接頭。
- 可附加線性定位系統機構。(選購品)
- Diameter of coolant collector's drain port is optional. Default : Ø33 ; optional : Ø40, Ø60.
- Linear sensor can be attached.(optional)
- 專利產品字號 Patent numbers : 台灣 : PAT.NO.M491534(Taiwan) / 大陸 : PAT.NO.ZL201420584274.5(China)



保留規格修改的權利  
Subject to technical changes

### 技術規格 SPECIFICATIONS

型號 Model	活塞面積 Eff. piston area		行程 Piston stroke	最高迴轉數 Max. speed	最高使用壓力 Max. pressure	I Moment of inertia	重量 Weight	總洩漏量 Total oil leakage
	押側(Extend) cm <sup>2</sup>	拉側(Retract) cm <sup>2</sup>						
TS-539	72.4	67.1	15	8000	4.5(45)	0.012	6.9	3.0
TS-866	168.0	155.5	25	5600	4.5(45)	0.056	16.3	4.0
TS-1081	189.2	174.3	25	4800	4.5(45)	0.085	21.2	4.3

### 外型尺寸 DIMENSIONS

Model	A 內徑 I.D.	B	B1	C	D	E h7	F	G1		G2		H	J	K	L	L1	L2	M1	M2	M3
								max.	min.	max.	min.									
TS-539	107	143	141	125	125	110	52	15	0	42.5	27.5	57	91	124	6~M10x20	M8x60	12	M45x1.5	25	12
TS-866	165	211	207	190	190	168	85	25	0	55	30	72.5	107	149	12~M10x20	M10x80	17.5	M75x2	35	15
TS-1081	180	226	222	205	205	168	100	25	0	58	33	74	115	166	12~M10x20	M10x80	16	M90x2	35	15

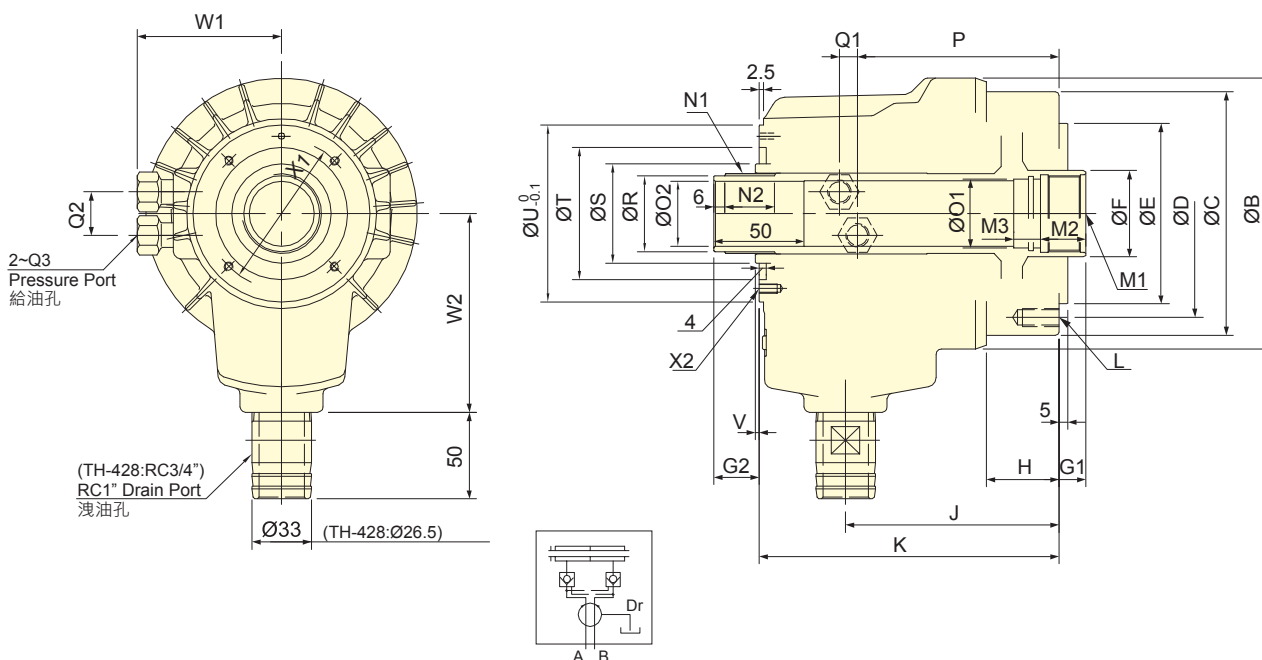
  

Model	N1	N2	N3	O1 (H8)	O2 (H8)	P	Q1	Q2	Q3	R (g7)	S (H7)	T	U	V	W1	W2	X1	X2	Y1	Y2	Z
TS-866	M74x1.5	37	8	72	66.5	105	12	45	RC1/2	72	100	111	154	12	95	140	88	M6x12	140	M6x10	5
TS-1081	M89x2.0	38	9	85	81	109	15	45	RC1/2	86	113	123	175	16	103	160	103	M6x12	160	M6x10	5

\* 集水盒及行程確認裝置請參閱零件頁面。\*Coolant Collector and Confirmation Device. Please See Accessories pages.



- 超高速·輕量·大孔徑型迴轉油壓缸。
- 內建逆止閥自鎖機構·可防止壓力源故障或配管部損傷時·確保壓力不致遽降·而能持續穩固的夾持工作物。
- Super high speed, light weight large Through-Hole.
- Built-in check valve which prevents the internal pressure from sudden declining so that the workpiece will not fly out and cause a serious accident.
- 可附加線性定位系統機構。(選購品)
- Linear sensor can be attached.(optional)



保留規格修改的權利  
Subject to technical changes

### 技術規格 SPECIFICATIONS

型號 Model	活塞面積 Eff. piston area		行程 Piston stroke	最高迴轉數 Max. speed	最高使用壓力 Max. pressure	I Moment of inertia	重量 Weight	總洩漏量 Total oil leakage
	伸側(Extend) cm <sup>2</sup>	拉側(Retract) cm <sup>2</sup>						
<b>TH-428</b>	53.2	50.5	10	8000	4.0(40)	0.008	5.8	3.0
<b>TH-A536</b>	69.8	67.5	15	8000	4.0(40)	0.05	8.3	3.0

### 外型尺寸 DIMENSIONS

Model	A 內徑 I.D.	B	C	D	E (h7)	F	G1 max.	G1 min.	G2 max.	G2 min.	H	J	K	L	M1	M2	M3
<b>TH-428</b>	90	130	120	100	80	40	10	0	35	25	45	127.5	155	6-M8x15	M33x1.5	25	12
<b>TH-A536</b>	105	150	135	115	100	48	15	0	40	25	40	118	166	6-M10x20	M42x1.5	25	15

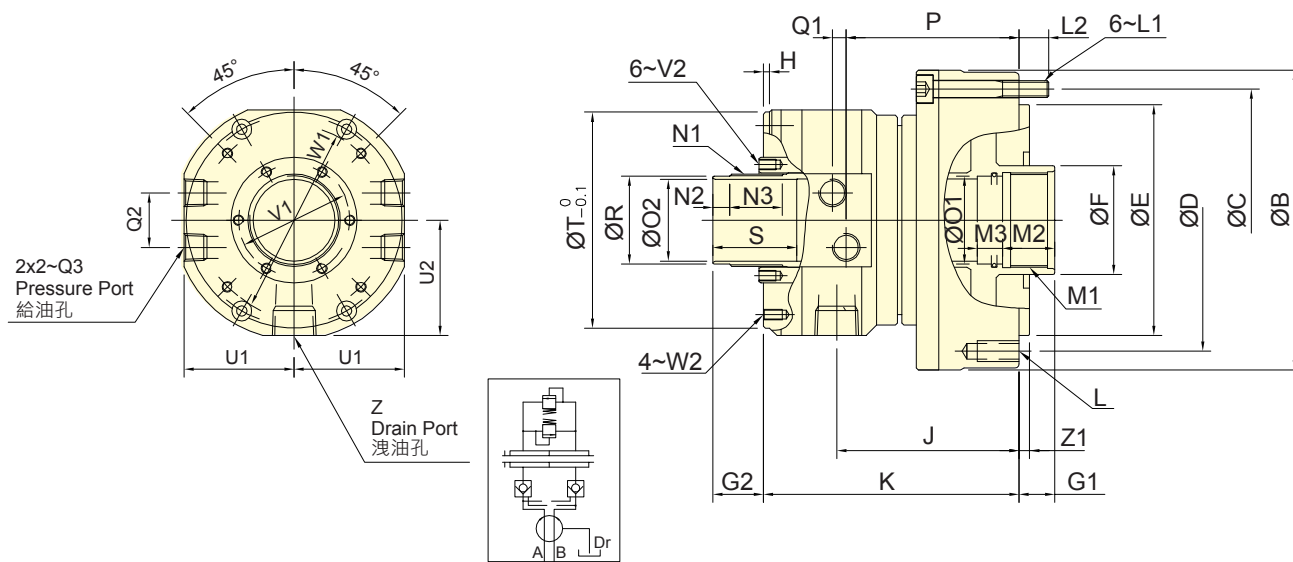
Model	N1	N2	O1 (H8)	O2 (H8)	P	Q1	Q2	Q3	R (g7)	S	T	U	V	W1	W2	X1	X2
<b>TH-428</b>	M34x1.5	26	30	28	101.5	11	24	RC1/4	32	45	65	86	4	72	105	76	M4x7
<b>TH-A536</b>	M44x1.5	28	38	36	111.5	10	24	RC1/4	42	55	73	98	4	80	110	83	M5x10

\* 集水盒及行程確認裝置請參閱零件頁面。\*Coolant Collector and Confirmation Device Please See Accessories pages.





- 外型長度精短·重量輕巧。
- 內建專利逆止閥與洩壓閥·安全保障更確實。
- 大給油孔與大洩油孔·入油量·排油順暢。
- 後鎖安裝與前鎖安裝兩用·空間應用更靈活。
- 可應用於立式與臥式主軸。
- This is a compact, short form, light weight through-hole rotary cylinder.
- With patented build-in safety check valves and pressure relief valves.
- Large feed port and drain port, large input and keep drain smoothly.
- Can be screwed from the front end or rear end of cylinder when mounting.
- For use with vertical or horizontal spindles.
- 可附加線性定位系統機構。(選購品)
- Linear sensor can be attached.(optional)
- 專利產品字號 Patent numbers :  
台灣: PAT.NO.M491534(Taiwan)  
大陸: PAT.NO.ZL201420584274.5(China)



保留規格修改的權利  
Subject to technical changes

### 技術規格 SPECIFICATIONS

型號 Model	活塞面積 Eff. piston area		行程 Piston stroke	最高迴轉數 Max. speed	最高使用壓力 Max. pressure	I Moment of inertia	重量 Weight	總洩漏量 Total oil leakage
	押側(Extend) cm <sup>2</sup>	拉側(Retract) cm <sup>2</sup>						
TR-539	72.4	67.1	15	8000	4.0(40)	0.010	6.8	3.0
TR-646	105.0	93.9	15	7000	4.0(40)	0.015	9.5	3.0
TR-853	135.3	125	20	6300	4.0(40)	0.032	11.5	3.9
TR-1075	170	155	25	4500	4.0(40)	0.065	18	4.2

### 外型尺寸 DIMENSIONS

Model	A				E h7	F	G1		G2		H	J	K	L	L1	L2	M1	M2	M3
	內徑 I.D.	B	C	D			max.	min.	max.	min.									
TR-539	107	143	125	125	110	52	15	0	34	19	4	97	133	6-M10x20	M8x60	12	M45x1.5	25	12
TR-646	128	165	147	147	130	65	15	0	34	19	3.5	97	135	12-M10x20	M8x60	11.5	M55x2	25	13
TR-853	145	185	165	170	130	70	20	0	47	27	4.5	118.5	160	12~M10x20	M8x75	12	M60x2	30	15
TR-1075	170	212	190	190	160	95	25	0	52	27	4.5	129.5	181	12~M10x20	M10x1.5	16	M85x2	35	15

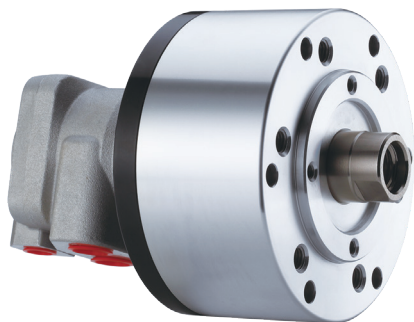
  

Model	N1	N2	N3	O1	O2	P	Q1	Q2	Q3	R	S	T	U1	U2	V1	V2	W1	W2	Z	Z1
				H8	H8					g7										
TR-539	M44x1.5	8	25	42	39	92.5	6.5	26	RC 1/4	42	40	103	52.5	55	53	M5x8	90	M5x9	RC 1/2	5
TR-646	M52x1.5	8	25	50	46	95	5	32	RC 3/8	50	50	116	59	62	61.5	M5x9	98	M5x9	RC 1/2	5
TR-853	M58x1.5	8	30	55	53	114	8	34	RC 3/8	56	50	128	65	67	70	M5x10	110	M6x11	RC 1/2	5
TR-1075	M84x2	9	33	80	75	123.5	12	40	RC 1/2	81	50	164	83	86	95	M5x10	155	M6x11	RC 3/4	5

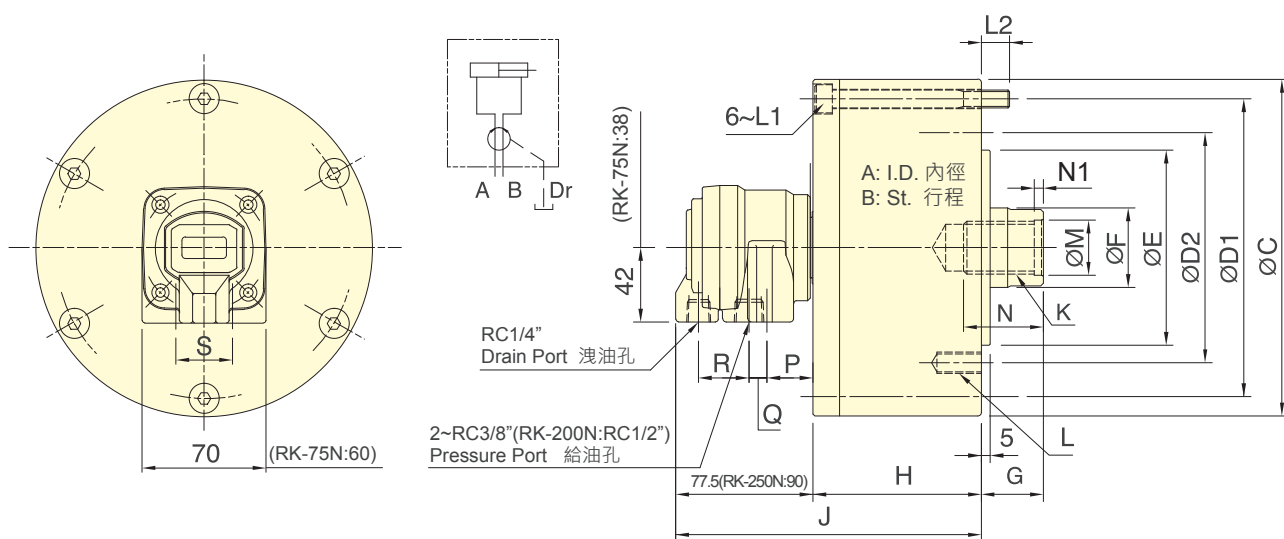
\* 集水盒及行程確認裝置請參閱零件頁面。\*Coolant Collector and Confirmation Device Please See Accessories pages.







- 短型・高速・輕量型迴轉油壓缸。
- 安裝時可由後端鎖固之。
- For short form, light weight and high speed rotary cylinder.
- Can screw it from the rear end of the cylinder when mounting.
- 洩油孔配管務必單獨接回油壓槽・以避免產生背壓。
- The drain port should be independently connected to oil tank to avoid back pressure.



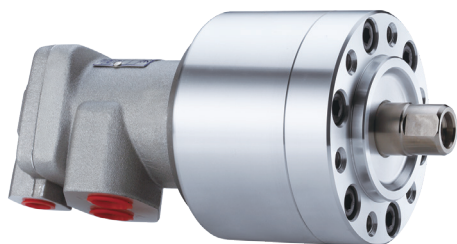
保留規格修改的權利  
Subject to technical changes

### 技術規格 SPECIFICATIONS

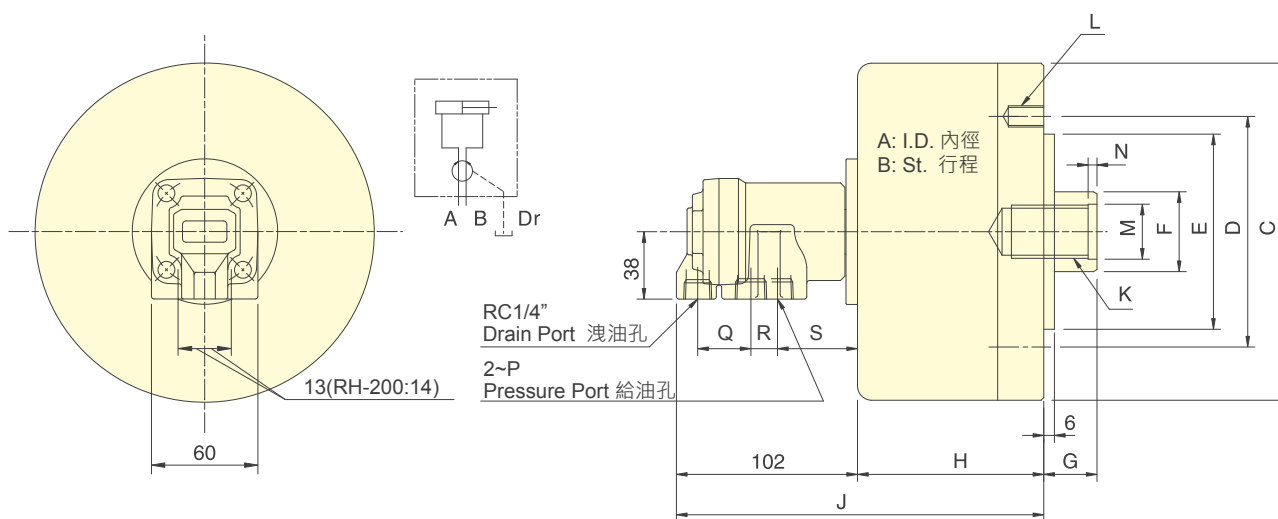
型號 Model	活塞面積 Eff. piston area		行程 Piston stroke	最高迴轉數 Max. speed	最高使用壓力 Max. pressure	I Moment of inertia	重量 Weight
	伸側(Extend) cm <sup>2</sup>	拉側(Retract) cm <sup>2</sup>					
<b>RK-75N</b>	44.2	37.1	15	6000	4.0(40)	0.01	2.8
<b>RK-100N</b>	78.5	71.5	20	6000	4.0(40)	0.03	4.3
<b>RK-125N</b>	122.7	113.1	25	6000	4.0(40)	0.05	6.8
<b>RK-150N</b>	176.7	160.8	30	5500	4.0(40)	0.09	9.4
<b>RK-200N</b>	314.1	290.4	35	5500	4.0(40)	0.28	15.3
<b>RK-250N</b>	469.1	436.0	60	2000	5.0(50)	0.40	45.2

### 外型尺寸 DIMENSIONS

Model	A	B	C	D1	D2	E (h7)	F	G max.	G min.	H	J	K	L	L1	L2	M (H8)	N	N1	P	Q	R	S
<b>RK-75N</b>	75	15	107	90	90	65	30	45	30	57	134.5	M20x2.5	6~M8x16	M8x60	12	21	35	5	28	10	27.5	26
<b>RK-100N</b>	100	20	132	115	100	80	30	45	25	72	149.5	M20x2.5	6~M10x20	M8x75	12	21	35	5	26	10	28.5	32
<b>RK-125N</b>	125	25	160	140	130	110	35	50	25	82	159.5	M24x3.0	6~M12x20	M8x85	12	25	45	5	26	10	28.5	32
<b>RK-150N</b>	150	30	190	170	130	110	45	55	25	95	172.5	M30x3.5	12~M12x24	M10x100	16	32	45	5	26	10	28.5	32
<b>RK-200N</b>	200	35	245	220	145	120	55	70	35	115	192.5	M36x4.0	12~M16x30	M10x125	21	38	60	5	30	6	28.5	28
<b>RK-250N</b>	245	60	307	275	220	160	65	85	25	165	255	M42x3.0	6~M20x2.5	M16x175	28	45	65	12	37	18	6	-



- 迴轉閥體與缸體皆採用特殊輕合金製造而成，重量輕。
- 迴轉閥經特殊設計，使得內部的軸承能充分的潤滑及冷卻，而能耐高速迴轉，增長壽命。
- The rotary valve and cylinder body, all made of special light alloy, light-weight.
- Through unique design, the rotary valve enables the inside bearing to get sufficient lubricating and cooling and endure high-speed rotary for longer service life.
- 洩油孔配管務必單獨接回油壓槽，以避免產生背壓。
- The drain port should be independently connected to oil tank to avoid back pressure.



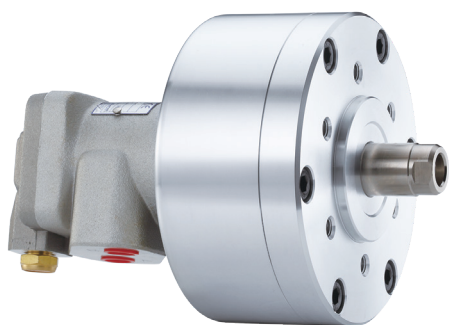
保留規格修改的權利  
Subject to technical changes

### 技術規格 SPECIFICATIONS

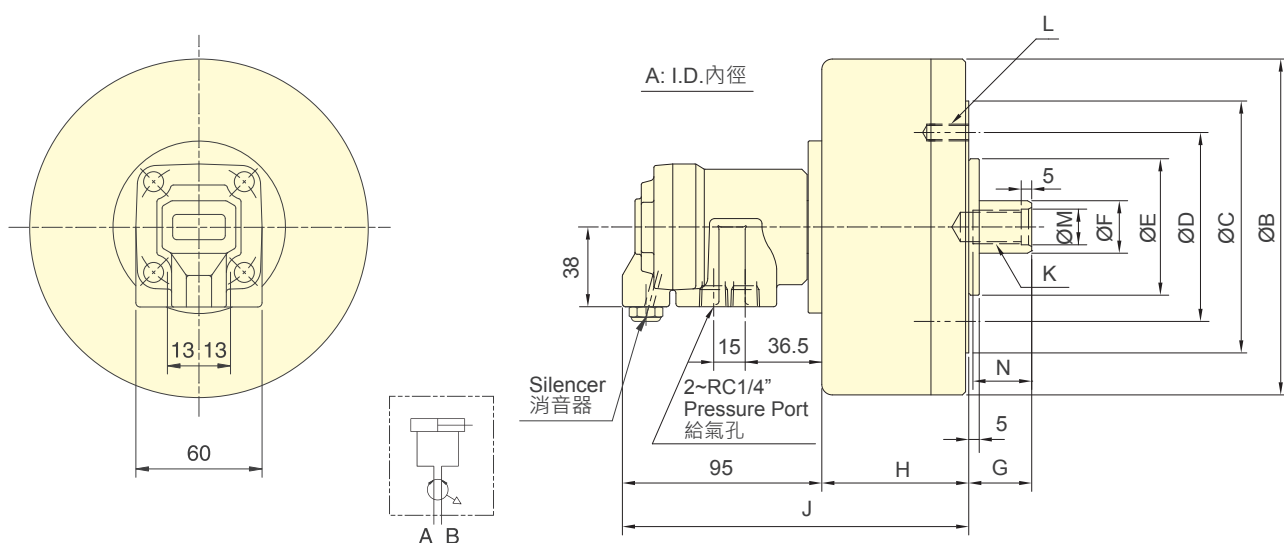
型號 Model	活塞面積 Eff. piston area		行程 Piston stroke	最高迴轉數 Max. speed	最高使用壓力 Max. pressure	I Moment of inertia	重量 Weight
	押側(Extend) cm <sup>2</sup>	拉側(Retract) cm <sup>2</sup>					
<b>RH-65</b>	31.0	27.9	15	6000	3.5(35)	0.01	2.9
<b>RH-80</b>	47.7	42.8	15	6000	3.5(35)	0.01	3.4
<b>RH-100</b>	75.4	70.5	20	5500	3.5(35)	0.04	4.9
<b>RH-125</b>	119.6	112.5	25	5500	3.5(35)	0.08	6.8
<b>RH-200</b>	310.0	286.3	35	4000	4.0(40)	0.38	20.4

### 外型尺寸 DIMENSIONS

Model	A	B	C	D	E (h7)	F	G max.	G min.	H	J	K	L	M (H8)	N	P	Q	R	S
<b>RH-65</b>	65	15	98	80	60	22	45	30	73	175	M12x1.75x30	6~M8x16	14	4	RC3/8	30	15	45
<b>RH-80</b>	80	15	112	90	65	25	45	30	74	176	M16x2.0x30	6~M8x16	17	4	RC3/8	30	15	45
<b>RH-100</b>	100	20	135	100	80	25	45	25	88.5	190.5	M16x2.0x30	6~M10x20	17	4	RC3/8	30	15	45
<b>RH-125</b>	125	25	160	130	110	30	50	25	95.5	197.5	M20x2.5x35	6~M12x20	21	4	RC3/8	30	15	45
<b>RH-200</b>	200	35	245	145	120	55	70	35	130	232	M36x4	12~M16x30	38	5	RC1/2	31	16	43



- 迴轉閥體與缸體皆採用特殊輕合金製造而成，重量輕。
- 迴轉閥經特殊設計，能使壓縮空氣的消耗量大量減少，充分發揮高經濟效益。
- The rotary valve and cylinder body, all made of special light alloy, are light-weight.
- Through unique design, the rotary valve can considerably reduce the waste in compressing air and efficiently increase its utilization.
- 使用時，請混入微量的油霧。
- When used, a little oil mist should be contained.



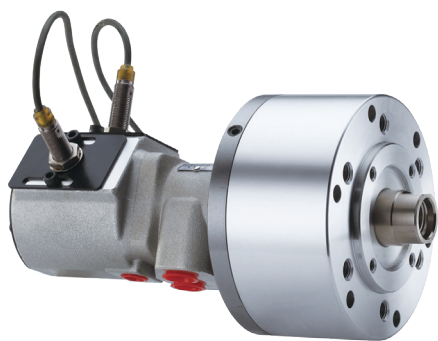
保留規格修改的權利  
Subject to technical changes

## 技術規格 SPECIFICATIONS

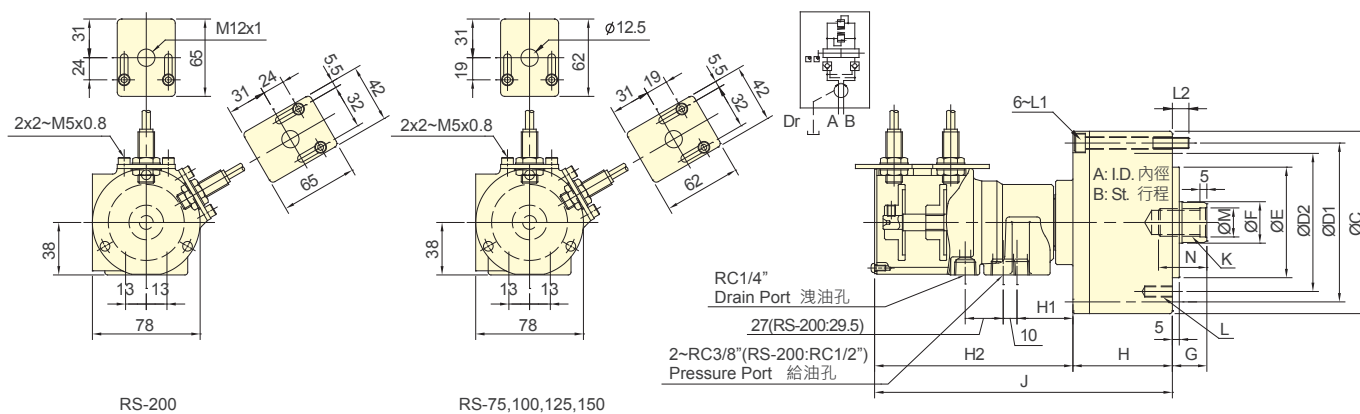
型號 Model	活塞面積 Eff. piston area		行程	最高迴轉數	最高使用壓力	I	重量	空氣洩漏量
	伸側(Extend) cm <sup>2</sup>	拉側(Retract) cm <sup>2</sup>	Piston stroke mm	Max. speed min <sup>-1</sup> (r.p.m.)	Max. pressure MPa(kgf/cm <sup>2</sup> )	Moment of inertia kg·m <sup>2</sup>	Weight kg	Air Leakage(6kgf/cm <sup>2</sup> ) cc/sec
RA-100	77.0	74.4	15	6000	0.8(8)	0.03	3.9	400
RA-130	131.2	124.7	15	5000	0.8(8)	0.05	5.2	400
RA-170	225.4	219.0	20	5000	0.8(8)	0.18	8.5	400
RA-220	378.6	369.3	25	4000	0.8(8)	0.36	14.5	400
RA-270	571.0	562.9	30	3000	0.8(8)	0.75	18.4	400

## 外型尺寸 DIMENSIONS

Model	A	B	C	D	E (h7)	F	G max.	G min.	H	J	K	L	M (H8)	N
RA-100	100	130	-	80	60	22	50	35	65	160	M12x1.75	6-M8x16	13	25
RA-130	130	160	120	90	65	25	45	30	70	165	M16x2.0	6-M8x16	17	30
RA-170	170	200	140	100	80	25	45	25	85	180	M16x2.0	6-M10x18	17	30
RA-220	220	255	170	130	110	30	50	25	91	186	M20x2.5	6-M12x20	21	35
RA-270	270	305	190	130	110	35	55	25	105	200	M24x3.0	6-M12x20	25	40



- 短型・高速・行程控制型迴轉油壓缸。
- 感應式近接開關・行程調整容易・可確認油壓缸正確作動。
- 內建逆止閥自鎖機構及壓力洩壓閥。
- 安裝時可由後端鎖固之。
- For short form, high speed and stroke control.
- With proximity sensor, the movement of the position is easy to adjust and confirm when operating.
- Built-in safety check valves and pressure relief valves.
- Can screw it from the rear end of the cylinder when mounting.
- 洩油孔配管務必單獨接回油壓槽・以避免產生背壓。
- 行程檢知機構可修改為線性定位系統機構。(訂製品)
- The drain port should be independently connected to oil tank to avoid back pressure.
- Stroke Detection Type can be customized to Linear Positioning System.



保留規格修改的權利  
Subject to technical changes

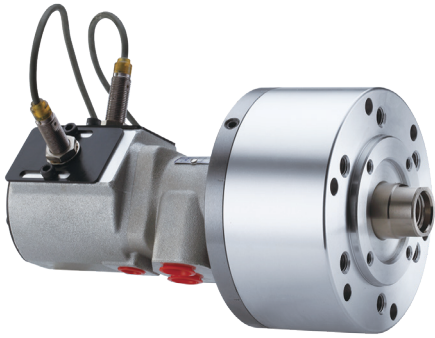
### 技術規格 SPECIFICATIONS

型號 Model	活塞面積 Eff. piston area		行程 Piston stroke	最高迴轉數 Max. speed	最高使用壓力 Max. pressure	I Moment of inertia	重量 Weight
	押側(Extend) cm <sup>2</sup>	拉側(Retract) cm <sup>2</sup>					
<b>RS-75</b>	43.0	37.1	15	6000	4.0 (40)	0.01	3.4
<b>RS-100</b>	77.4	71.5	20	6000	4.0 (40)	0.04	4.9
<b>RS-125</b>	121.6	113.1	25	6000	4.0 (40)	0.05	7.4
<b>RS-150</b>	175.6	160.8	30	5500	4.0 (40)	0.10	10.7
<b>RS-200</b>	313.0	290.4	35	5500	4.0 (40)	0.29	15.9

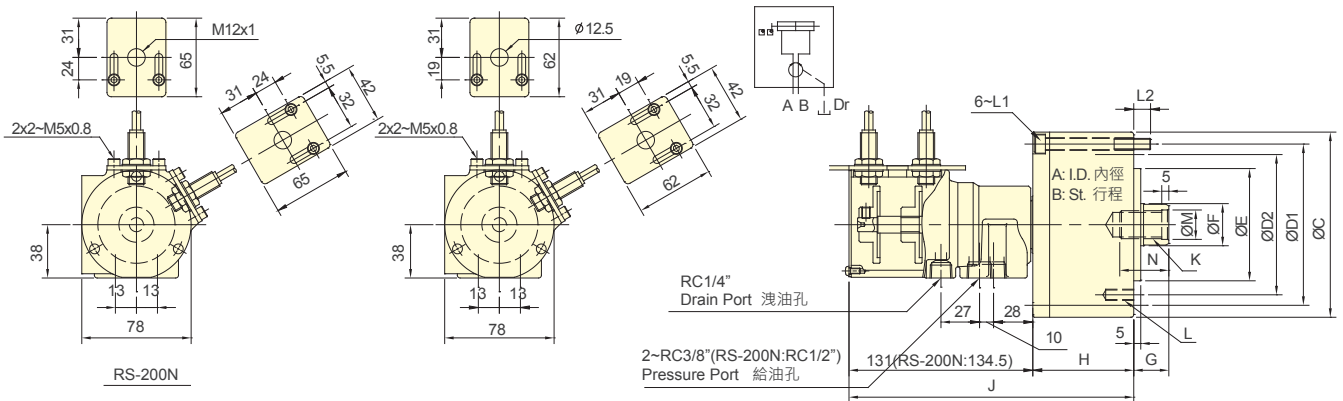
### 外型尺寸 DIMENSIONS

Model	A	B	C	D1	D2	E (h7)	F	G max.	G min.	H	H1	H2	J	K	L	L1	L2	M (H8)	N
<b>RS-75</b>	75	15	107	90	90	65	30	45	30	57	42	145	202	M20x2.5	6~M8x16	M8x60	12	21	35
<b>RS-100</b>	100	20	132	115	100	80	30	45	25	72	42	145	217	M20x2.5	6~M10x20	M8x75	12	21	35
<b>RS-125</b>	125	25	160	140	130	110	35	50	25	82	41	144	226	M24x3.0	6~M12x20	M8x85	12	25	45
<b>RS-150</b>	150	30	190	170	130	110	45	55	25	95	39	142	237	M30x3.5	12~M12x24	M10x100	16	32	45
<b>RS-200</b>	200	35	245	220	145	120	55	70	35	115	34	142.5	257.5	M36x4.0	12~M16x30	M10x125	21	38	60

\* 近接開關 : DC 10-30V 100mA NPN • \*Proximity sensor : DC 10-30V 100mA NPN.



- 短型・高速・行程控制型迴轉油壓缸。
- 感應式近接開關・行程調整容易・可確認油壓缸正確作動。
- 安裝時可由後端鎖固之。
- For short form, high speed and stroke control.
- With proximity sensor, the movement of the position is easy to adjust and confirm when operating.
- Can screw it from the rear end of the cylinder when mounting.
- 洩油孔配管務必單獨接回油壓槽・以避免產生背壓。
- 行程檢知機構可修改為線性定位系統機構。(訂製品)
- The drain port should be independently connected to oil tank to avoid back pressure.
- Stroke Detection Type can be customized to Linear Positioning System.



保留規格修改的權利  
Subject to technical changes

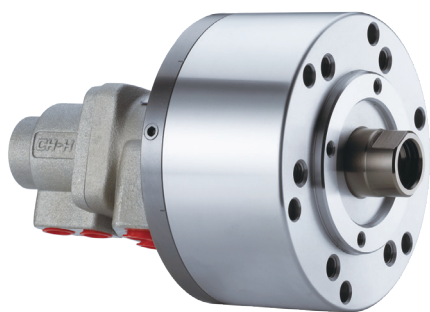
### 技術規格 SPECIFICATIONS

型號 Model	活塞面積 Eff. piston area		行程 Piston stroke	最高迴轉數 Max. speed	最高使用壓力 Max. pressure	I Moment of inertia	重量 Weight
	押側(Extend) cm <sup>2</sup>	拉側(Retract) cm <sup>2</sup>					
RS-6520N	32.0	28.3	20	6000	4.0(40)	0.01	3.2
RS-6530N	32.0	28.3	30	6000	4.0(40)	0.01	3.3
RS-75N	43.0	37.1	15	6000	4.0(40)	0.01	3.3
RS-7530N	43.0	37.1	30	6000	4.0(40)	0.013	3.7
RS-100N	77.4	71.5	20	6000	4.0(40)	0.04	4.8
RS-125N	121.6	113.1	25	6000	4.0(40)	0.05	7.3
RS-150N	175.6	160.8	30	5500	4.0(40)	0.16	10.6
RS-200N	313.0	290.4	35	5500	4.0(40)	0.29	15.9

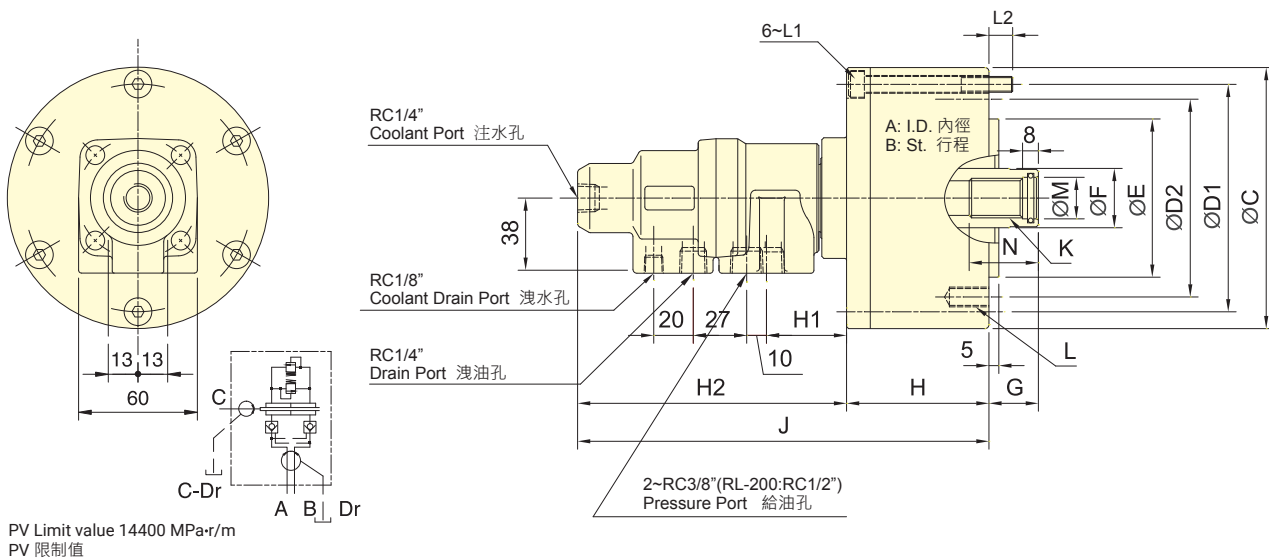
### 外型尺寸 DIMENSIONS

Model	A	B	C	D1	D2	E (h7)	F	G max.	G min.	H	J	K	L	L1	L2	M (H8)	N
RS-6520N	65	20	97	80	80	60	25	45	25	62	193	M16x2.0	6~M8x16	M6x70	14.5	17	30
RS-6530N	65	30	97	80	80	60	25	45	15	62	203	M16x2.0	6~M8x16	M6x80	14.5	17	30
RS-75N	75	15	107	90	90	65	30	45	30	57	188	M20x2.5	6~M8x16	M8x60	12	21	35
RS-7530N	75	30	107	90	90	65	30	45	15	72	203	M20x2.5	6~M8x16	M8x75	12	21	35
RS-100N	100	20	132	115	100	80	30	45	25	72	203	M20x2.5	6~M10x20	M8x75	12	21	35
RS-125N	125	25	160	140	130	110	35	50	25	82	213	M24x3.0	6~M12x20	M8x85	12	25	45
RS-150N	150	30	190	170	130	110	45	55	25	95	226	M30x3.5	12~M12x24	M10x100	16	32	45
RS-200N	200	35	245	220	145	120	55	75	35	115	249.5	M36x4.0	12~M16x30	M10x125	21	38	60

\* 近接開關 : DC 10-30V 100mA NPN \* Proximity sensor : DC 10-30V 100mA NPN.



- 高速・注水型迴轉油壓缸。可經由後端供給切削水。
- 內建逆止閥自鎖機構及壓力洩壓閥。
- To allow coolant to be feed from the rear end of the distributor through the rotating union
- Built-in safety check valves and pressure relief valves.
- 洩油孔配管務必單獨接回油壓槽，以避免產生背壓。
- 注水部無流體通過時，請勿運轉。
- The drain port should be independently connected to oil tank to avoid back pressure.
- The rotary cylinder should not run without liquid through coolant port.



保留規格修改的權利  
Subject to technical changes

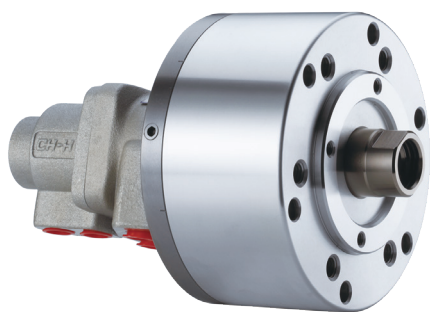
### 技術規格 SPECIFICATIONS

型號 Model	活塞面積 Eff. piston area		行程 Piston stroke	最高迴轉數 Max. speed	最高使用壓力 Max. pressure	注水部最高使用壓力 Coolant connection Max. pressure	I Moment of inertia	重量 Weight
	押側(Extend) cm <sup>2</sup>	拉側(Retract) cm <sup>2</sup>						
RL-75	42.6	37.1	15	6000	4.0(40)	3.5(35)	0.01	3.1
RL-100	77.0	71.5	20	6000	4.0(40)	3.5(35)	0.04	4.6
RL-125	121.2	113.1	25	6000	4.0(40)	3.5(35)	0.06	7.1
RL-150	175.2	160.8	30	5500	4.0(40)	3.5(35)	0.10	9.7
RL-200	312.5	290.4	35	5500	4.0(40)	3.5(35)	0.30	15.6

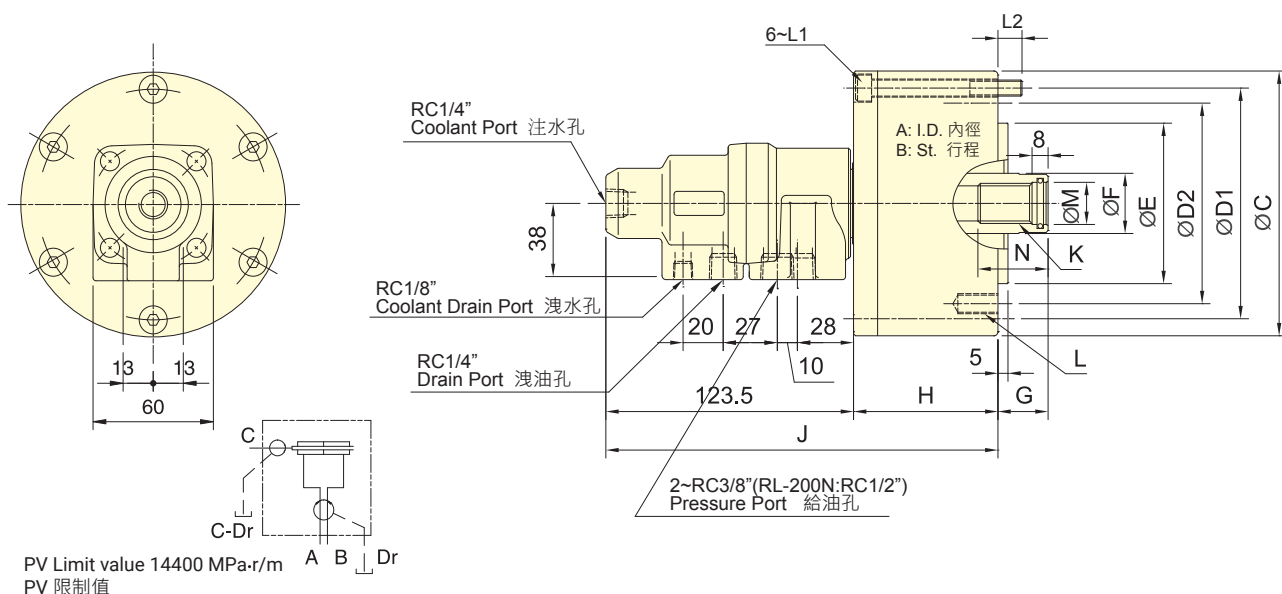
### 外型尺寸 DIMENSIONS

Model	A	B	C	D1	D2	E (h7)	F	G max.	G min.	H	H1	H2	J	K	L	L1	L2	M (H8)	N
RL-75	75	15	107	90	90	65	30	45	30	57	42	137	194	M20x2.5	6~M8x16	M8x60	12	21	35
RL-100	100	20	132	115	100	80	30	45	25	72	42	137	209	M20x2.5	6~M10x20	M8x75	12	21	35
RL-125	125	25	160	140	130	110	35	50	25	82	41	136	218	M24x3.0	6~M12x20	M8x85	12	25	45
RL-150	150	30	190	170	130	110	45	55	25	95	39	134	230	M30x3.5	12~M12x24	M10x100	16	32	45
RL-200	200	35	245	220	145	120	55	70	35	115	36	132	248	M36x4.0	12~M16x30	M10x125	21	38	60





- 高速・注水型迴轉油壓缸。可經由後端供給切削水。
- 安裝時可由後端鎖固之。
- To allow coolant to be feed from the rear end of the distributor through the rotating union.
- Can screw it from the rear end of the cylinder when mounting.
- 洩油孔配管務必單獨接回油壓槽，以避免產生背壓。
- 注水部無流體通過時，請勿運轉。
- The drain port should be independently connected to oil tank to avoid back pressure.
- The rotary cylinder should not run without liquid through coolant port.



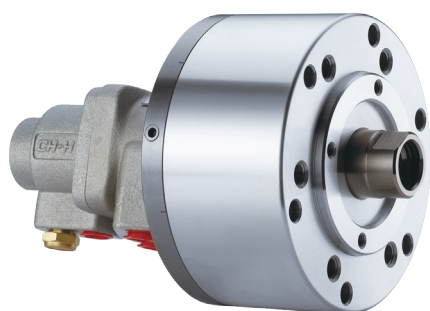
保留規格修改的權利  
Subject to technical changes

### 技術規格 SPECIFICATIONS

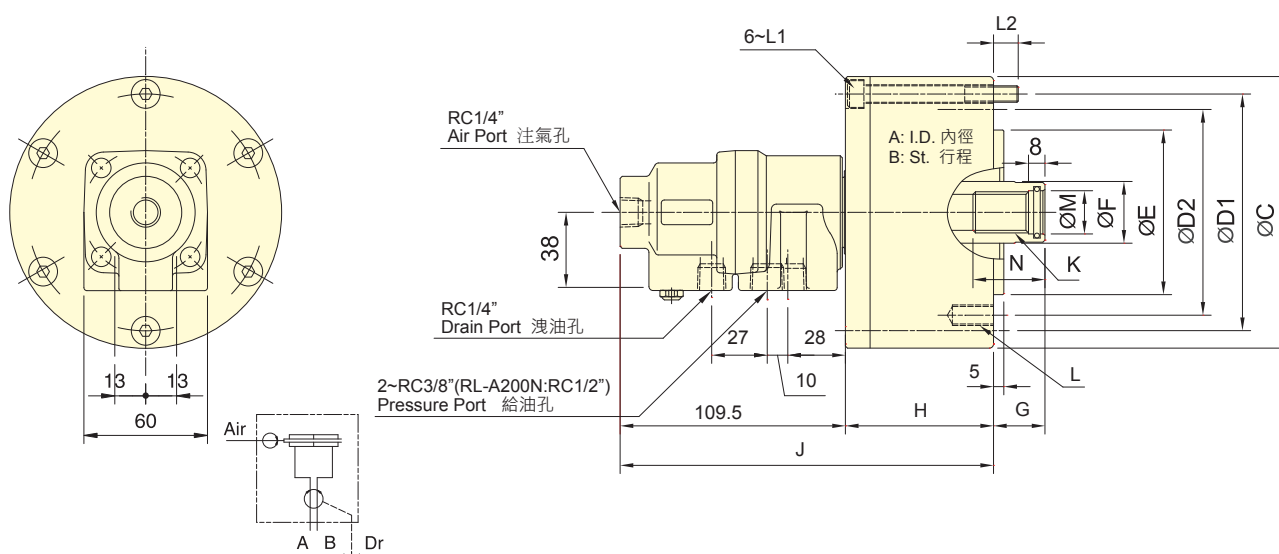
型號 Model	活塞面積 Eff. piston area		行程 Piston stroke	最高迴轉數 Max. speed	最高使用壓力 Max. pressure	注水部最高使用壓力 Coolant connection Max. pressure	I Moment of inertia	重量 Weight
	伸側(Extend) cm <sup>2</sup>	拉側(Retract) cm <sup>2</sup>						
RL-75N	42.6	37.1	15	6000	4.0 (40)	3.5(35)	0.01	3.0
RL-100N	77.0	71.5	20	6000	4.0 (40)	3.5(35)	0.04	4.5
RL-125N	121.2	113.1	25	6000	4.0 (40)	3.5(35)	0.06	7.0
RL-150N	175.2	160.8	30	5500	4.0 (40)	3.5(35)	0.10	9.6
RL-200N	312.5	290.4	35	5500	4.0 (40)	3.5(35)	0.29	15.5

### 外型尺寸 DIMENSIONS

Model	A	B	C	D1	D2	E (h7)	F	G max.	G min.	H	J	K	L	L1	L2	M (H8)	N
RL-75N	75	15	107	90	90	65	30	45	30	57	180	M20x2.5	6-M8x16	M8x60	12	21	35
RL-100N	100	20	132	115	100	80	30	45	25	72	195	M20x2.5	6-M10x20	M8x75	12	21	35
RL-125N	125	25	160	140	130	110	35	50	25	82	205	M24x3.0	6-M12x20	M8x85	12	25	45
RL-150N	150	30	190	170	130	110	45	55	25	95	218	M30x3.5	12-M12x24	M10x100	16	32	45
RL-200N	200	35	245	220	145	120	55	70	35	115	240	M36x4.0	12-M16x 30	M10x125	21	38	60



- 高速・注氣型迴轉油壓缸，可經由後端供給空氣。
- 安裝時可由後端鎖固之。
- To allow compressed air to be feed from the rear end of the distributor through the rotating union.
- Can screw it from the rear end of the cylinder when mounting.
- 使用時，請混入微量的油霧。
- When used, a little oil mist should be contained.



保留規格修改的權利  
Subject to technical changes

### 技術規格 SPECIFICATIONS

型號 Model	活塞面積 Eff. piston area		行程 Piston stroke	最高迴轉數 Max. speed	最高使用壓力 Max. pressure	注氣部最高使用壓力 Air connection Max. pressure	I Moment of inertia	重量 Weight
	伸側(Extend) cm <sup>2</sup>	拉側(Retract) cm <sup>2</sup>						
RL-A75N	42.6	37.1	15	6000	4.0(40)	0.8(8)	0.01	3.0
RL-A100N	77.0	71.5	20	6000	4.0(40)	0.8(8)	0.04	4.5
RL-A125N	121.2	113.1	25	6000	4.0(40)	0.8(8)	0.06	7.0
RL-A150N	175.2	160.8	30	5500	4.0(40)	0.8(8)	0.10	9.6
RL-A200N	312.5	290.4	35	5500	4.0(40)	0.8(8)	0.29	15.5

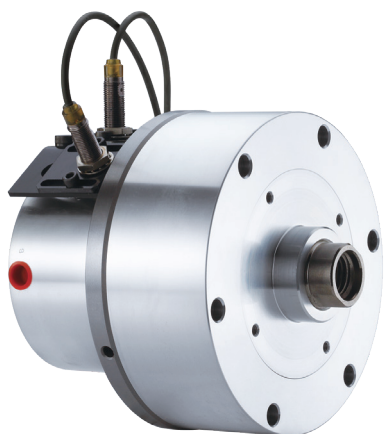
### 外型尺寸 DIMENSIONS

Model	A	B	C	D1	D2	E (h7)	F	G max.	G min.	H	J	K	L	L1	L2	M (H8)	N
RL-A75N	75	15	107	90	90	65	30	45	30	57	166	M20 x2.5	6~M8x 16	M8x60	12	21	35
RL-A100N	100	20	132	115	100	80	30	45	25	72	181	M20 x2.5	6~M10x20	M8x75	12	21	35
RL-A125N	125	25	160	140	130	110	35	50	25	82	191	M24x 3.0	6~M12x20	M8x85	12	25	45
RL-A150N	150	30	190	170	130	110	45	55	25	95	204	M30x3.5	12~M12x24	M10x100	16	32	45
RL-A200N	200	35	245	220	145	120	55	70	35	115	225	M36 x4.0	12~M16x30	M10x125	21	38	60

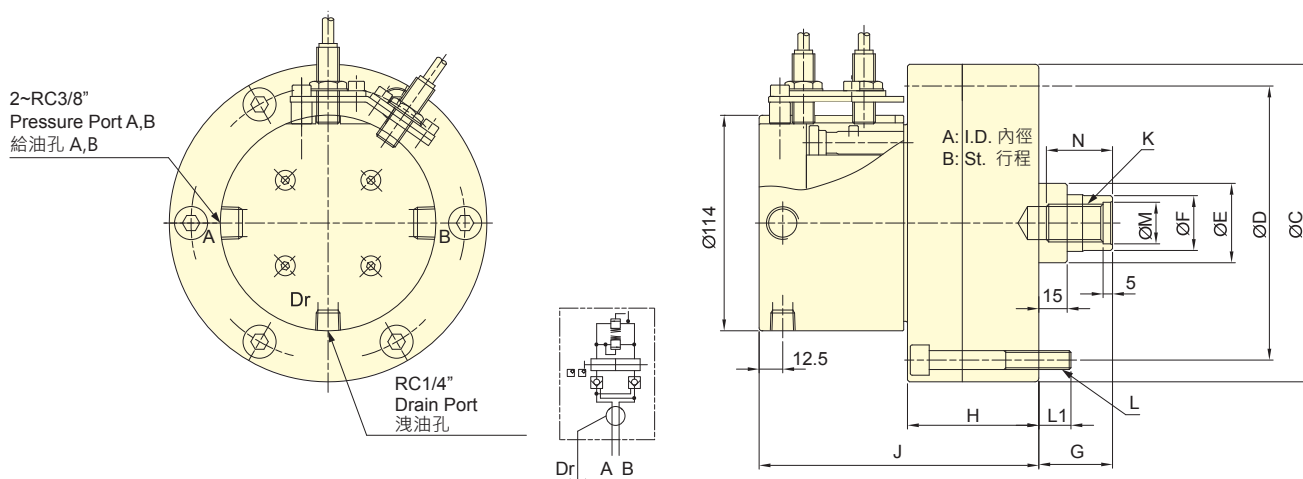


- 迴轉接頭和近接開關安裝型式。
- Rotating joint and Proximity switch with bracket type.

<b>F1</b>	固定式 · 單通道 With single path rotating joint (Fixed type)	<b>F2</b>	固定式 · 雙通道 With double paths rotating joint(Fixed type)
<b>M1</b>	移動式 · 單通道 With single path rotating joint(Moving type)	<b>M2</b>	移動式 · 雙通道 With double paths rotating joint(Moving type)
<b>B</b>	線性檢知和支架 linear Sensor with bracket	<b>S</b>	近接開關和支架 Proximity switch with bracket
<ul style="list-style-type: none"> <li>* 近接開關與迴轉接頭是選購品。</li> <li>* 可選擇所合適的附加類型。</li> <li>* 詳細安裝介面尺寸請與聯繫我們。</li> </ul>		<ul style="list-style-type: none"> <li>* The proximity switch and rotary joint are optional.</li> <li>* Choose and attach the appropriate type.</li> <li>* Please contact AUTOGRIP for more detailed drawing.</li> </ul>	



- 高速・輕量整合型迴轉油壓缸。
- 內建逆止閥自鎖機構・洩壓閥及行程控制近接開關。
- 安裝時可由後端鎖固之。
- For short form, light weight and high speed rotary cylinder.
- Built-in safety check valves, pressure relief valves and proximity sensor.
- Can screw it from the rear end of the cylinder when mounting.
- 洩油孔配管務必單獨接回油壓槽・以避免產生背壓。
- 行程檢知機構可修改為線性定位系統機構。(訂製品)
- The drain port should be independently connected to oil tank to avoid back pressure.
- Stroke Detection Type can be customized to Linear Positioning System.



保留規格修改的權利  
Subject to technical changes

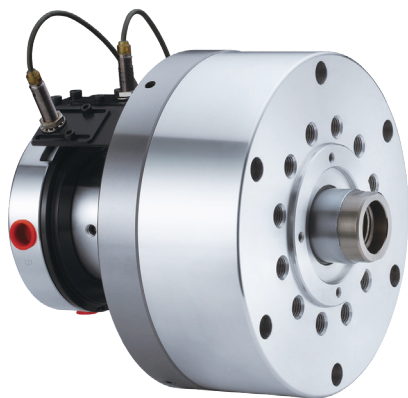
### 技術規格 SPECIFICATIONS

型號 Model	活塞面積 Eff. piston area		行程 Piston stroke	最高迴轉數 Max. speed	最高使用壓力 Max. pressure	I Moment of inertia	重量 Weight
	押側(Extend) cm <sup>2</sup>	拉側(Retract) cm <sup>2</sup>					
RE-110	92.7	87.9	20	6000	3.5(35)	0.02	6.9
RE-120	110.8	106	21	6000	4.0(40)	0.03	8.8
RE-130	130.4	123.1	30	6000	4.0(40)	0.03	9.1

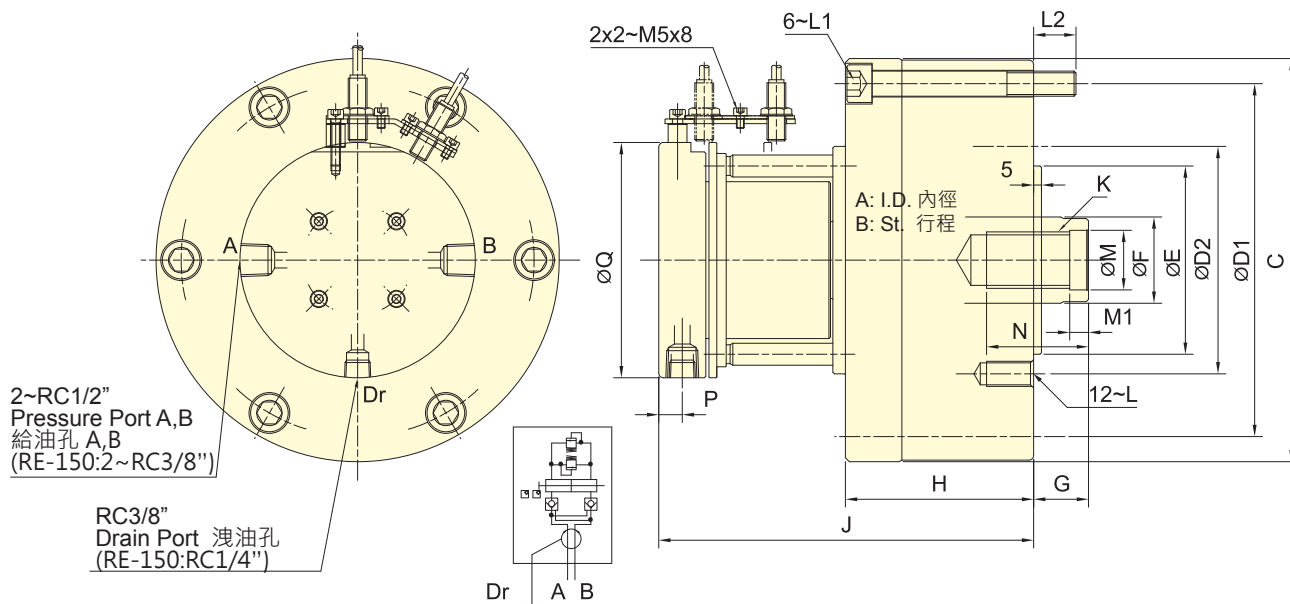
### 外型尺寸 DIMENSIONS

Model	A	B	C (h7)	D	E	F	G max.	G min.	H	J	K	L	L1	M (H8)	N
RE-110	110	20	145	128	42	29	60	40	66	146	M20x2.5	6~M8x70	12	22	35
RE-120	120	21	168	145	42	29	60	39	69.5	148	M20x2.5	6~M10x75	17	22	35
RE-130	130	30	168	150	50	33	60	30	79.5	158	M24x3.0	6~M10x85	17	27	40

\* 近接開關 : DC 10-30V 100mA NPN • \*Proximity sensor : DC 10-30V 100mA NPN.



- 高速・輕量整合型迴轉油壓缸・特別適合使用於立式車床。
- 內建逆止閥自鎖機構・洩壓閥及行程控制近接開關。
- 安裝時可由後端鎖固之。
- For short form, light weight and high speed rotary cylinder, suitable for vertical lathe.
- Built-in safety check valves, pressure relief valves and proximity sensor.
- Can screw it from the rear end of the cylinder when mounting.
- 洩油孔配管務必單獨接回油壓槽・以避免產生背壓。
- 行程檢知機構可修改為線性定位系統機構。(訂製品)
- The drain port should be independently connected to oil tank to avoid back pressure.
- Stroke Detection Type can be customized to Linear Positioning System.



保留規格修改的權利  
Subject to technical changes

### 技術規格 SPECIFICATIONS

型號 Model	活塞面積 Eff. piston area		行程 Piston stroke	最高迴轉數 Max. speed	最高使用壓力 Max. pressure	I Moment of inertia	重量 Weight
	伸側(Extend) cm <sup>2</sup>	拉側(Retract) cm <sup>2</sup>					
RE-150	174.4	160.8	30	5500	4.0 (40)	0.06	14.9
RE-200K	292.4	274.9	35	4000	4.0 (40)	0.19	29.1
RE-200L	292.4	265.4	50	4000	5.0 (50)	0.21	30.4
RE-250	465.2	438.2	60	2000	5.0 (50)	0.43	47.2

### 外型尺寸 DIMENSIONS

Model	A	B	C	D1	D2	E (h7)	F	G max.	G min.	H	J	K	L	L1	L2	M (H8)	M1	N	P	Q
RE-150	150	30	205	180	130	110	45	60	30	99	177.5	M30x3.5	M12x24	M12x105	18.5	32	10	50	12.5	114
RE-200K	195	35	257	225	145	120	55	73	38	120	239	M36x4.0	M16x30	M16x130	27	38	12	65	15	150
RE-200L	195	50	257	225	170	125	65	80	30	135	254	M42x3.0	M16x30	M16x145	27	45	12	65	15	150
RE-250	245	60	307	275	220	160	65	85	25	165	280	M42x3.0	M20x35	M16x175	28	45	12	65	15	150

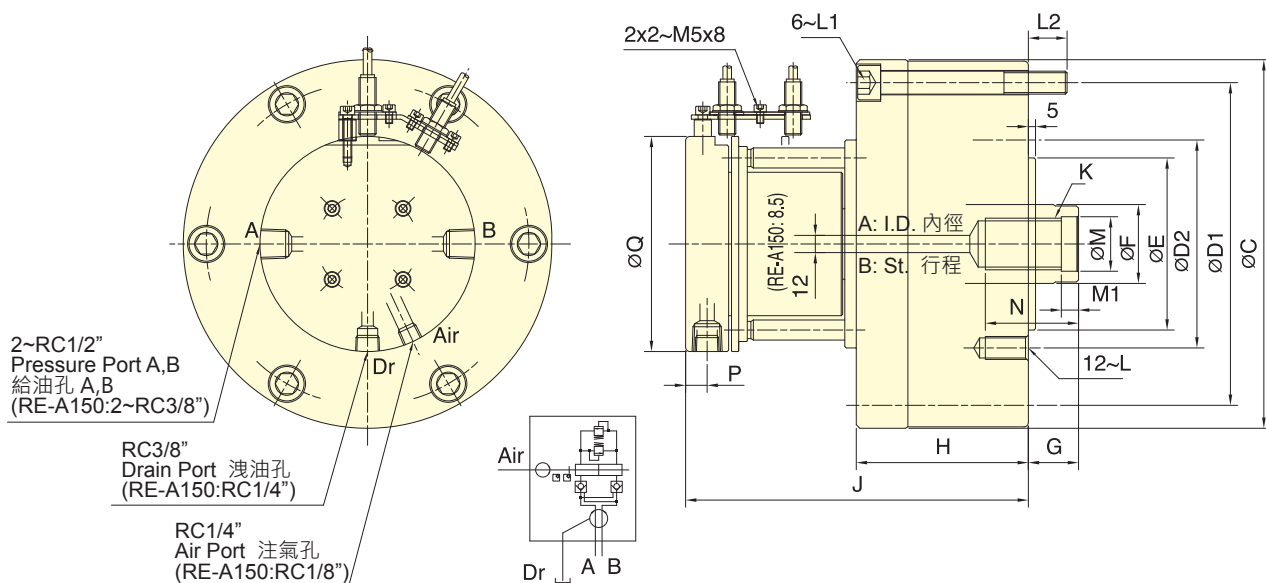
\* 近接開關 : DC 10-30V 100mA NPN \* Proximity sensor : DC 10-30V 100mA NPN.







- 高速・輕量整合型注氣迴轉油壓缸・可經由後端供給空氣。
- 內建逆止閥自鎖機構・洩壓閥及行程控制近接開關。
- 安裝時可由後端鎖固之。
- For short form, light weight and high speed rotary cylinder. To allow compressed air to be feed from the rear end of the distributor through the rotating union.
- Built-in safety check valves, pressure relief valves and proximity sensor.
- Can screw it from the rear end of the cylinder when mounting.
- 洩油孔配管務必單獨接回油壓槽・以避免產生背壓。
- 使用時・請混入微量的油霧。
- 行程檢知機構可修改為線性定位系統機構。(訂製品)
- The drain port should be independently connected to oil tank to avoid back pressure.
- When used, a little oil mist should be contained.
- Stroke Detection Type can be customized to Linear Positioning System.



保留規格修改的權利  
Subject to technical changes

### 技術規格 SPECIFICATIONS

型號 Model	活塞面積 Eff. piston area		行程 Piston stroke	最高迴轉數 Max. speed	最高使用壓力 Max. pressure	注氣部最高使用壓力 Air connection Max. pressure	I Moment of inertia	重量 Weight
	伸側(Extend) cm <sup>2</sup>	拉側(Retract) cm <sup>2</sup>						
RE-A150	174.4	160.8	30	5500	4.0(40)	0.8(8)	0.06	14.9
RE-A200K	292.4	274.9	35	4000	4.0(40)	0.8(8)	0.19	29.1
RE-A200L	292.4	265.4	50	4000	5.0(50)	0.8(8)	0.21	30.4
RE-A250	465.2	438.2	60	2000	5.0(50)	0.8(8)	0.43	47.2

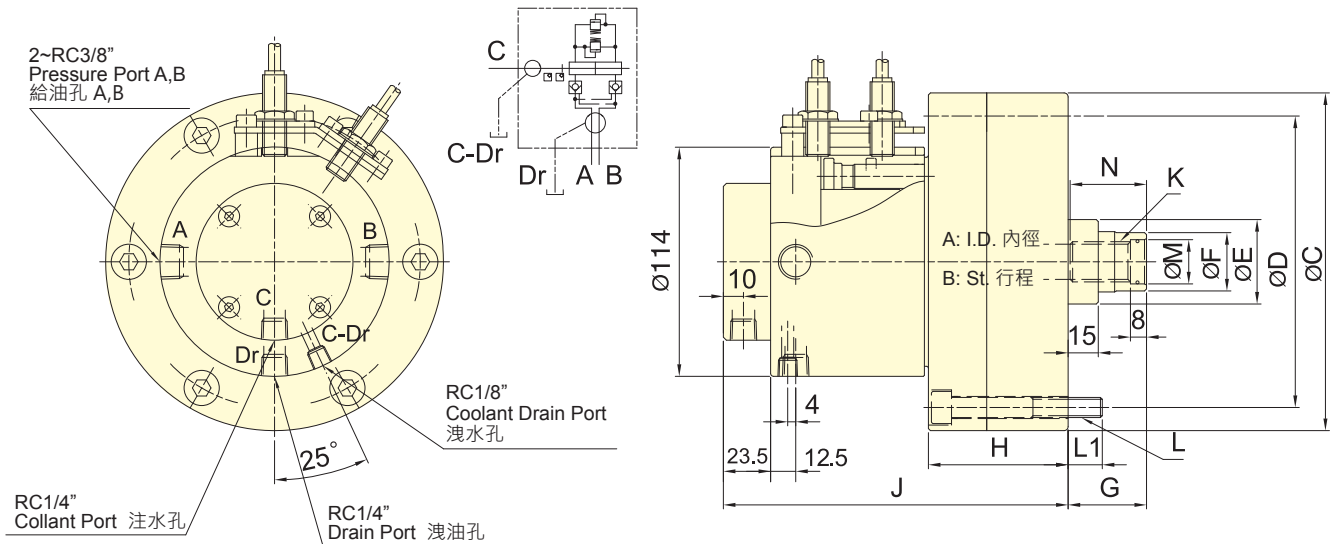
### 外型尺寸 DIMENSIONS

Model	A	B	C	D1	D2	E (h7)	F	G max.	G min.	H	J	K	L	L1	L2	M (H8)	M1	N	P	Q
RE-A150	150	30	205	180	130	110	45	60	30	99	177.5	M30x3.5	M12x24	M12x105	18.5	32	10	50	12.5	114
RE-A200K	195	35	257	225	145	120	55	73	38	120	239	M36x4.0	M16x30	M16x130	27	38	12	65	15	150
RE-A200L	195	50	257	225	170	125	65	80	30	135	254	M42x3.0	M16x30	M16x145	27	45	12	65	15	150
RE-A250	245	60	307	275	220	160	65	85	25	165	280	M42x3.0	M20x35	M16x175	28	45	12	65	15	150

\* 近接開關 : DC 10-30V 100mA NPN \* Proximity sensor : DC 10-30V 100mA NPN.



- 高速・輕量整合型注水迴轉油壓缸，可經由後端供給切削水。
- 內建逆止閥自鎖機構・洩壓閥及行程控制近接開關。
- 安裝時可由後端鎖固之。
- For short form, light weight and high speed rotary cylinder. To allow coolant to be feed from the rear end of the distributor through the rotating union.
- Built-in safety check valves, pressure relief valves and proximity sensor.
- Can screw it from the rear end of the cylinder when mounting.
- 洩油孔配管務必單獨接回油壓槽，以避免產生背壓。
- 注水部無液體通過時，請勿運轉。
- 行程檢知機構可修改為線性定位系統機構。(訂製品)
- The drain port should be independently connected to oil tank to avoid back pressure.
- The rotary cylinder should not run without liquid through coolant port.
- Stroke Detection Type can be customized to Linear Positioning System.



保留規格修改的權利  
Subject to technical changes

### 技術規格 SPECIFICATIONS

型號 Model	活塞面積 Eff. piston area		行程 Piston stroke	最高迴轉數 Max. speed	最高使用壓力 Max. pressure	注水部最高使用壓力 Coolant connection Max. pressure	I Moment of inertia	重量 Weight
	押側(Extend) cm <sup>2</sup>	拉側(Retract) cm <sup>2</sup>						
RE-L110	92.7	87.9	20	6000	4.0(40)	1.5(15)	0.02	7.2
RE-L120	109.3	106	21	6000	4.0(40)	1.5(15)	0.03	9.1
RE-L130	128.9	123.1	30	6000	4.0(40)	1.5(15)	0.03	9.5

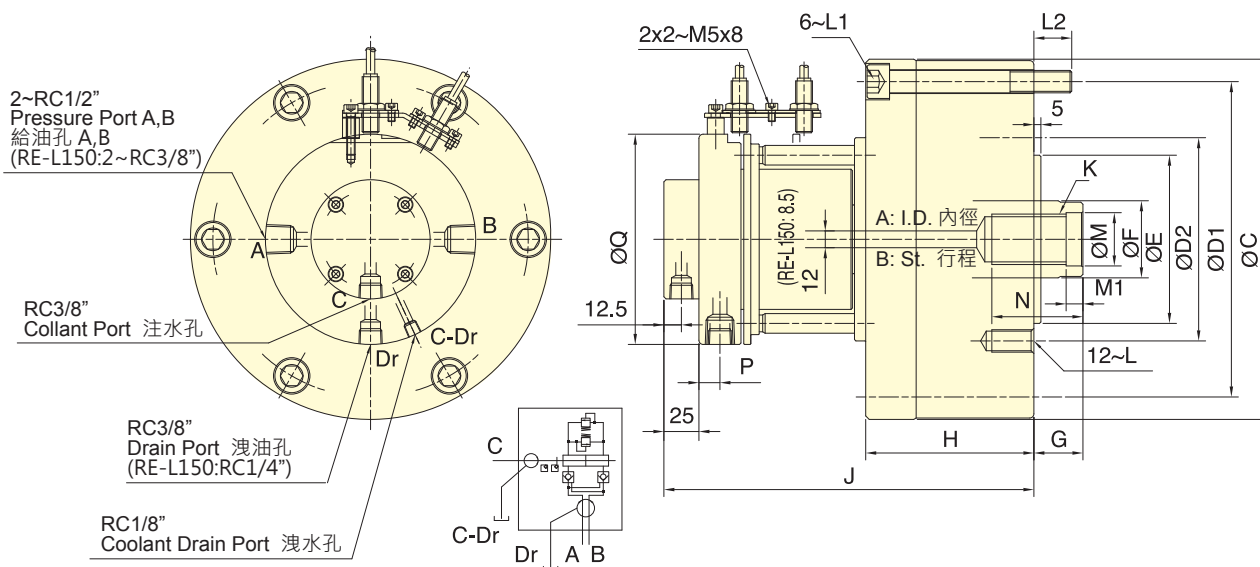
### 外型尺寸 DIMENSIONS

Model	A	B	C (h7)	D	E	F	G max.	G min.	H	J	K	L	L1	M (H8)	N
RE-L110	110	20	145	128	42	29	60	40	66	169.5	M20x2.5	6~M8x70	12	22	38
RE-L120	120	21	168	145	42	29	60	39	69.5	171.5	M20x2.5	6~M10x75	17	22	38
RE-L130	130	30	168	150	50	33	60	30	79.5	181.5	M24x3.0	6~M10x85	17	27	43

\* 近接開關 : DC 10-30V 100mA NPN \* Proximity sensor : DC 10-30V 100mA NPN.



- 高速・輕量整合型注水迴轉油壓缸，可經由後端供給切削水，特別適合使用於立式車床。
- 內建逆止閥自鎖機構，洩壓閥及行程控制近接開關。
- 安裝時可由後端鎖固之。
- For short form, light weight and high speed rotary cylinder. To allow coolant to be feed from the rear end of the distributor through the rotating union, suitable for vertical lathe.
- Built-in safety check valves, pressure relief valves and proximity sensor.
- Can screw it from the rear end of the cylinder when mounting.
- 洩油孔配管務必單獨接回油壓槽，以避免產生背壓。
- 注水部無流體通過時，請勿運轉。
- 行程檢知機構可修改為線性定位系統機構。(訂製品)
- The drain port should be independently connected to oil tank to avoid back pressure.
- The rotary cylinder should not run without liquid through coolant port.
- Stroke Detection Type can be customized to Linear Positioning System.



保留規格修改的權利  
Subject to technical changes

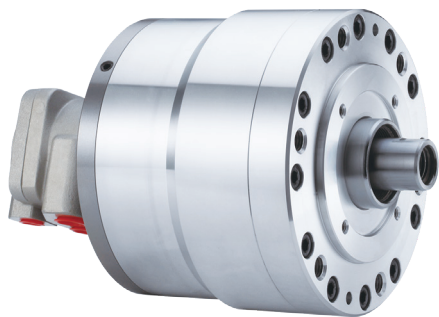
### 技術規格 SPECIFICATIONS

型號 Model	活塞面積 Eff. piston area		行程 Piston stroke	最高迴轉數 Max. speed	最高使用壓力 Max. pressure	注水部最高使用壓力 Coolant connection Max. pressure	I Moment of inertia	重量 Weight
	伸側(Extend) cm <sup>2</sup>	拉側(Retract) cm <sup>2</sup>						
RE-L150	174.4	160.8	30	5500	4.0(40)	1.5(15)	0.06	15.2
RE-L200K	292.4	274.9	35	4000	4.0(40)	1.5(15)	0.19	29.4
RE-L200L	292.4	265.4	50	4000	5.0(50)	1.5(15)	0.21	30.7
RE-L250	465.2	438.2	60	2000	5.0(50)	1.5(15)	0.43	47.5

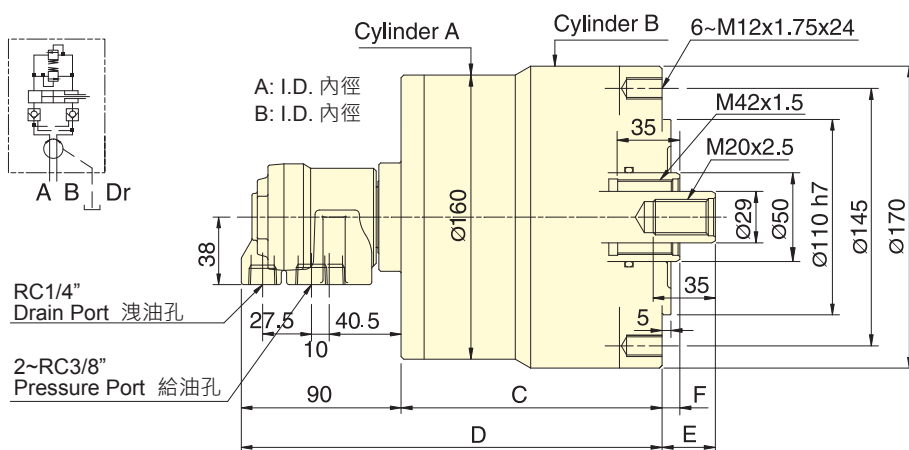
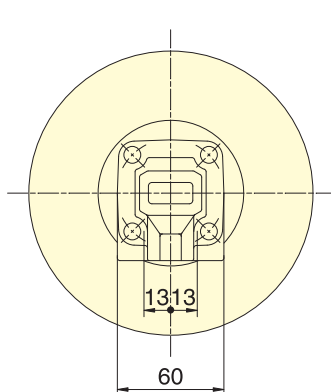
### 外型尺寸 DIMENSIONS

Model	A	B	C	D1	D2	E (h7)	F	G max.	G min.	H	J	K	L	L1	L2	M (H8)	M1	N	P	Q
RE-L150	150	30	205	180	130	110	45	60	30	99	201	M30x3.5	M12x24	M12x105	18.5	32	10	50	12.5	114
RE-L200K	195	35	257	225	145	120	55	73	38	120	264	M36x4.0	M16x30	M16x130	27	38	12	65	15	150
RE-L200L	195	50	257	225	170	125	65	80	30	135	279	M42x3.0	M16x30	M16x145	27	45	12	65	15	150
RE-L250	245	60	307	275	220	160	65	85	25	165	305	M42x3.0	M20x35	M16x175	28	45	12	65	15	150

\* 近接開關 : DC 10-30V 100mA NPN \* Proximity sensor : DC 10-30V 100mA NPN.



- 短型・輕量・雙桿型迴轉油壓缸。
- 內建逆止閥自鎖機構及壓力洩壓閥。
- For short form, light weight, double rod rotary cylinder.
- Built-in safety check valves and pressure relief valves.
- 洩油孔配管務必單獨接回油壓槽，以避免產生背壓。
- The drain port should be independently connected to oil tank to avoid back pressure.



保留規格修改的權利  
Subject to technical changes

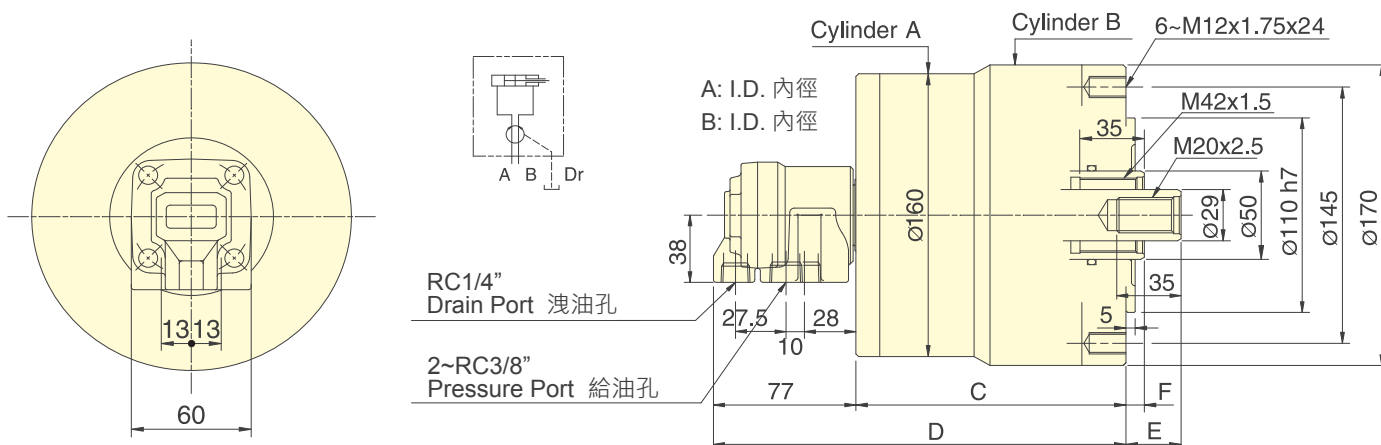
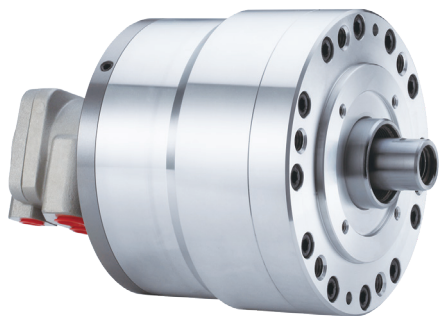
### 技術規格 SPECIFICATIONS

型號	活塞面積 Eff. piston area				行程	最高迴轉數	最高使用壓力	I	重量
	伸側(Extend)		縮側(Retract)						
Model	A	B	A	B	Piston stroke	Max. speed	Max. pressure	Moment of inertia	Weight
	cm <sup>2</sup>	cm <sup>2</sup>	cm <sup>2</sup>	cm <sup>2</sup>	mm	min <sup>-1</sup> (r.p.m.)	MPa(kgf/cm <sup>2</sup> )	kg·m <sup>2</sup>	kg
<b>RD-120</b>	122.7	126.1	116.1	113.1	20	5000	3.0(30)	0.14	11.3
<b>RD-125</b>	122.7	126.1	116.1	113.1	25	5000	3.0(30)	0.15	11.5

### 外型尺寸 DIMENSIONS

Model	A	B	C	D	E max.	E min.	F max.	F min.
<b>RD-120</b>	125	130	137	227	60	40	35	15
<b>RD-125</b>	125	130	147	237	55	30	35	10

- 短型・輕量・雙桿型迴轉油壓缸。
- For short form, light weight, double rod rotary cylinder.
- 洩油孔配管務必單獨接回油壓槽・以避免產生背壓。
- The drain port should be independently connected to oil tank to avoid back pressure.



保留規格修改的權利  
Subject to technical changes

### 技術規格 SPECIFICATIONS

型號	活塞面積Eff. piston area				行程	最高迴轉數	最高使用壓力	I	重量
	押側(Extend)		拉側(Retract)						
Model	A	B	A	B	Piston stroke	Max. speed	Max. pressure	Moment of inertia	Weight
	cm <sup>2</sup>	cm <sup>2</sup>	cm <sup>2</sup>	cm <sup>2</sup>	mm	min <sup>-1</sup> (r.p.m.)	MPa(kgf/cm <sup>2</sup> )	kg·m <sup>2</sup>	kg
<b>RD-120N</b>	122.7	126.1	116.1	113.1	20	5000	3.0(30)	0.14	11.2
<b>RD-125N</b>	122.7	126.1	116.1	113.1	25	5000	3.0(30)	0.15	11.4

### 外型尺寸 DIMENSIONS

Model	A	B	C	D	E max.	E min.	F max.	F min.
<b>RD-120N</b>	125	130	137	214	60	40	35	15
<b>RD-125N</b>	125	130	147	224	55	30	35	10