

# JAINNHER

## JAINNHER

鍵和機械股份有限公司

JAINNHER MACHINE CO., LTD.

40768 台中市西屯區台中工業區28路333號

No.333, 28th Rd, Taichung Industrial Park Taichung, Taiwan 407

TEL: +886-4-2358-5299 FAX: +886-4-2359-4803

E-mail: saledep@jainnher.com www.jainnher.com

昆山嘉尼赫機械有限公司

KUN SHAN JAINNHER MACHINE CO., LTD.

江蘇省昆山市周市鎮金茂路900號3棟3樓

3F, Building 3, No.900, Jinmao Road, Zhoushi Town, Kunshan City, Jiangsu, China

TEL: +86 512-8186-7171 / +86 512-8186-7575

FAX: +86 512-8186-7979



1000.2020.05

EXCEEDING THE PURSUIT OF EXCELLENCE  
DILIGENCE IS THE SOUL OF BUSINESS





## COMPANY HISTORY 公司沿革

- Established in November 1982 located at Taichung city, Taiwan
  - Published centerless grinder model 12, 18 in 1983
  - JHC-18S-CNC8 axes is introduced in 1992
  - Moved to Taichung Industrial Park in 1992
  - Obtained CE certification for centerless grinder in 1995
  - Cylindrical grinder is introduced in 1997
  - Passed ISO 9001 and 9002 in 2000
  - CNC internal grinder is introduced in 2005
  - Obtained CE certification for cylindrical in 2005
  - Moved to current facility in 2005
  - CNC plunge cylindrical grinder is introduced in 2006
  - Obtained CE certification for internal grinder in 2006
  - Center hole grinder is introduced in 2007
  - CNC angular cylindrical grinder is introduced in 2008
  - CNC double spindle grinder is introduced in 2010
  - CNC vertical grinder displayed at TIMTOS in 2015
  - Won "Taiwan Excellent Branding Awards" in 2017
  - CNC thread grinder is introduced in 2019
  - Won "Taiwan Excellent Awards" & "Golden Hand Award" in 2019
- 1982年 設立於台中市太平區
  - 1983年 開始製造12,18型無心磨床
  - 1992年 開發JHC-18S-CNC8軸無心磨床
  - 1992年 搬遷至台中工業區18路
  - 1995年 取得無心磨床的CE認證
  - 1997年 開始生產圓筒磨床
  - 2000年 通過ISO-9001認證
  - 2005年 開發CNC內圓磨床
  - 2005年 取得圓筒磨床的CE認證
  - 2005年 搬遷至現址
  - 2006年 開發直進式CNC圓筒磨床
  - 2006年 取得內孔磨床CE認證
  - 2007年 開發中心孔磨床
  - 2008年 開發CNC斜進式圓筒磨床
  - 2010年 開發CNC雙主軸內外圓磨床
  - 2015年 於台北國際機械展中展出立式磨床
  - 2017年 榮獲台灣優良商標獎
  - 2019年 開發CNC螺紋磨床
  - 2019年 榮獲台灣精品獎與金手獎

## SALES NETWORK 銷售國家

### NORTH AMERICA

United States  
Canada  
Mexico

### SOUTH AMERICA

Brazil  
Chile

### EUROPE

Germany  
United Kingdom  
France  
Finland  
Belgium  
Italy  
Spain  
Turkey  
Poland  
Denmark

Czech Republic  
Bulgaria  
Croatia  
Slovakia  
Slovenia  
Russia  
Israel  
Latvia  
Portugal

### AFRICA

South Africa  
Egypt

### ASIA

Taiwan  
China Mainland  
Hong Kong  
Japan  
Korea  
Iran  
Thailand  
Indonesia  
Malaysia  
Philippines  
Singapore  
India  
Pakistan

### OCEANIA

Australia  
New Zealand

EXCEEDING THE PURSUIT OF EXCELLENCE  
**DILIGENCE** IS THE SOUL OF BUSINESS

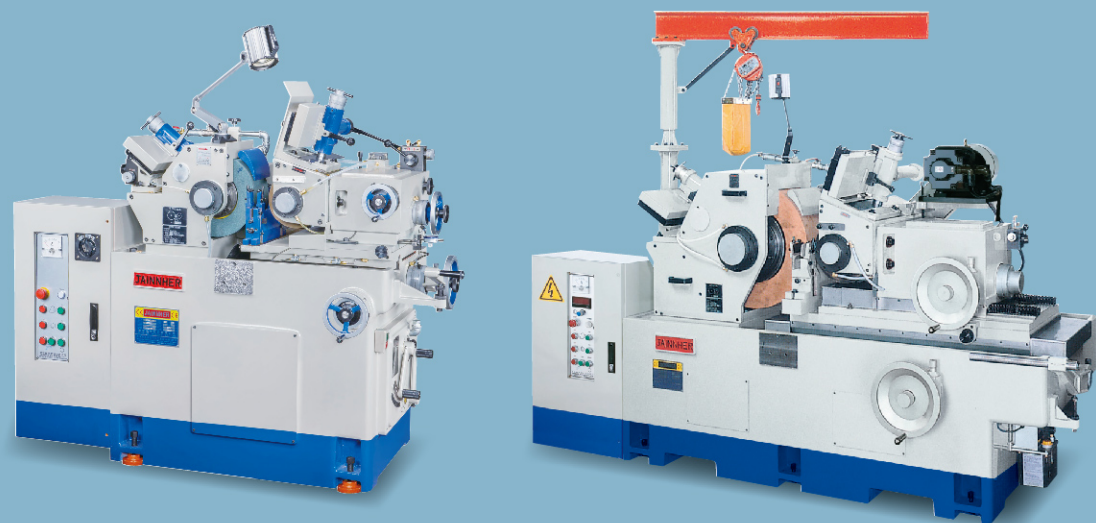




## JHC Series 系列

- Traditional manual / NC / CNC
- Range of grinding diameter: 1~230 mm
- Maximum infeed grinding length: 600 mm
- One-Piece fabricated base
- Hydrodynamic, hydrostatic grinding wheel spindle
- Hydraulic pressure detector, protect wheel spindle and alloy bearing
- Precision spindle surface hardness after carburizing heat treatment is over HRC60
- Japanese made servo motor for regulating wheel, variable speed for idea peripheral speed
- NC / CNC servo axis choice
- Conversational operation interface on NC machine
- Customized auto loading unloading device, fully automatic mass production equipment

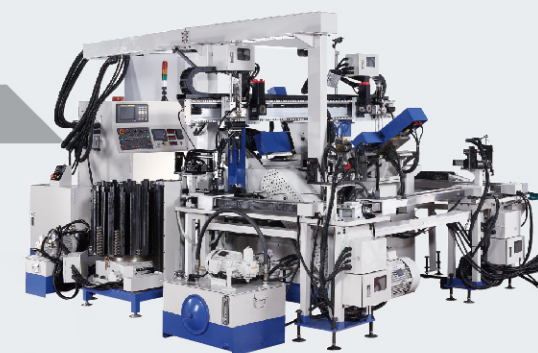
- 傳統手動 / NC / CNC
- 研磨外徑範圍: 1~230 mm
- 停止研磨最大長度: 600 mm
- 一體成型床台
- 動壓、靜壓式砂輪主軸
- 油壓壓力檢知，保護主軸及軸承
- 精密主軸經滲碳熱處理 表面硬度可達HRC60以上
- 調整輪主軸馬達採用日製伺服馬達，無段數位設定，可以調整到最佳線速度
- NC / CNC 伺服軸向選擇
- NC 機型控制器採用對話式操作介面
- 客製化送收料機構，全自動量產生產設備



## CENTERLESS GRINDING MACHINE 無心磨床

### JHC-18S-CNC 8 axes/軸

With fully automatic loading unloading device for universal joint kits.  
全自動送收料機構，研磨汽車十字接頭



### JHC-2408T-NC 3 axes/軸

Both side feeding with 6 meter bar feeder and receiver  
雙邊進給及6米長棒材送收料機構



### JHC-18S-CNC 6 axes/軸

With fully automatic loading unloading device for grinding automobile engine valve  
全自動送收料機構，研磨汽車引擎用之汽門閥

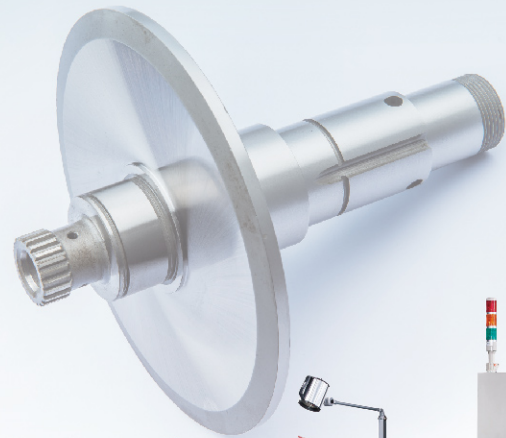




# UNIVERSAL CYLINDRICAL GRINDING MACHINE 萬能圓筒磨床

## JHU-27/35 Series 系列

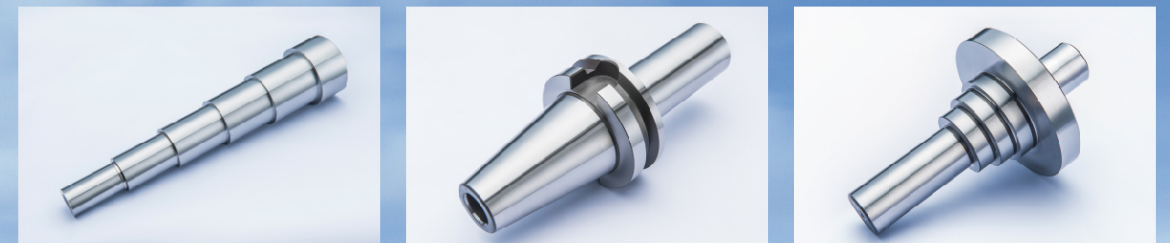
- Manual, NC and CNC
- Maximum grinding diameter 250 and 330 mm
- Maximum grinding length 600, 1,000, 1,500, 2,000 mm
- One-Piece fabricated base
- Hydrodynamic type grinding wheel spindle
- Internal attachment
- Conversational operation interface on NC machine
- Hydraulic tailstock on CNC machine
- Multiple functions and various grinding modes
- Variety grinding cycle on CNC machine
- 傳統手動 / NC / CNC
- 最大研磨外徑: 250 / 330 mm
- 最大研磨長度: 600 / 1,000 / 1,500 / 2,000 mm
- 一體成型床台
- 動壓式砂輪主軸
- 可加裝內徑研磨裝置
- NC 機型控制器採用對話式操作介面
- CNC 機台附油壓尾座
- 多功能及多種研磨方式
- CNC 可選擇多樣化研磨循環



# PLUNGE / ANGULAR CYLINDRICAL GRINDING MACHINE 直進/斜進式圓筒磨床

## JHA/P-20/35/40 Series 系列

- CNC cylindrical grinding Machine
- Maximum grinding diameter 200, 330 and 380 mm
- Maximum grinding length 300, 600 and 1,000 mm
- One-Piece fabricated base, box type structure, superior stability and rigidity
- Bearing, hydrodynamic, hydrostatic type grinding wheel spindle
- Hydraulic tailstock on CNC machine
- Multiple functions and various grinding modes, non-circular grinding
- Variety grinding cycle on CNC machine
- Traditional hand scraping ensure machine accuracy
- High resolution linear scale for close-loop feedback
- Automatic lubrication system
- With robot arm or gantry to increase productivity
- CNC 圓筒磨床
- 最大研磨外徑: 200 / 330 / 380 mm
- 最大研磨長度: 300 / 600 / 1,000 mm
- 一體成型床台、箱型結構、穩重、剛性佳
- 軸承、動壓、靜壓式砂輪主軸
- CNC 機台附油壓尾座
- 多功能及多種研磨方式、非圓研磨
- CNC 可選擇多樣化研磨循環
- 傳統人工鏟花確保機台精度品質
- 光學尺高解析度閉回路迴受控制
- 床身自動潤滑系統
- 可搭配多關節機械手臂或門型移載可增加產能





## INTERNAL GRINDING MACHINE 內圓磨床

# JHI-150/3006/3012 Series 系列

- NC / CNC internal grinding machine
- Range of I.D. grinding: 6~300 mm
- Maximum grinding depth 300 mm
- Maximum holding length 1,200 mm
- Maximum swing over bed 500 mm
- One-Piece fabricated base, box type structure, high rigidity
- Hardening heat treatment double-V slide
- Adjustable angle spindle head
- Traditional hand scraping ensure machine accuracy
- Conversational operation interface on NC machine
- Various operational mode selections
- Automatic lubrication system
- Variety grinding cycle on CNC machine
- With customized loading unloading device increase productivity

- NC / CNC 內圓磨床
- 內徑研磨範圍: 6~300 mm
- 最大研磨深度: 300 mm
- 最大夾持長度: 1,200 mm
- 最大床面旋徑: 500 mm
- 一體成型床台、箱型結構、高剛性
- 雙V滑軌硬化熱處理
- 可調整角度之主軸台
- 傳統人工鏟花確保機台精度品質
- NC機型控制器採用對話式操作介面
- 多種操作模式選擇
- 床身自動潤滑系統
- CNC可選擇多樣化研磨循環
- 搭配客製化送收料機構增加效能

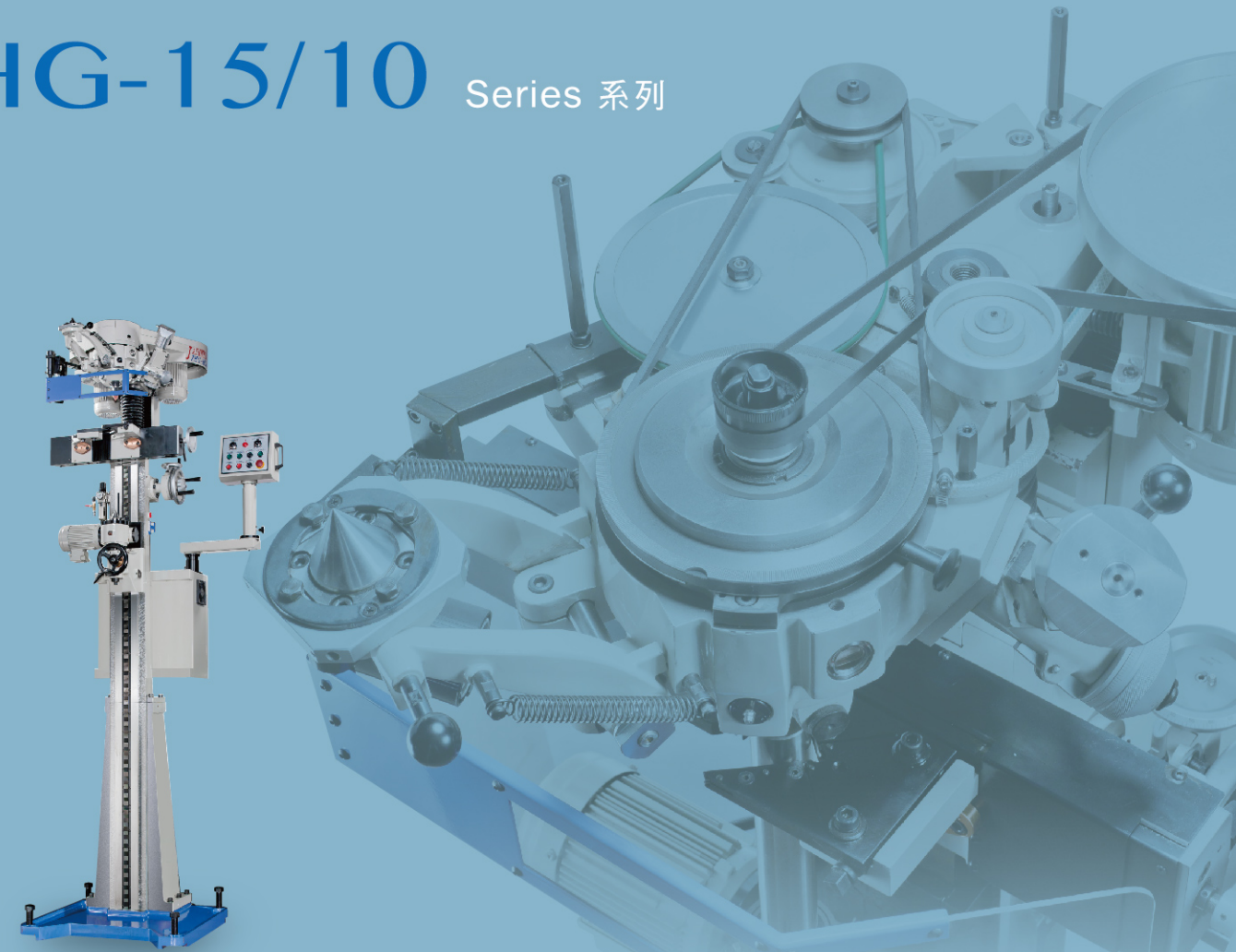


## CENTER HOLE GRINDING MACHINE 中心孔磨床

# JHG-15/10 Series 系列

- Manual center hole grinding machine
- Range of center hole grinding: 2~60 mm
- Range of clamp O.D: 5~125 mm
- Range of clamp length: 50~2,000 mm
- Center hole angle 60°
- One-Piece fabricated base
- Grinding wheel spindle adopt sleeve design, easy maintenance
- With small oil groove after grinding
- Planetary motion of grinding wheel spindle
- Grinding wheel reciprocating motion is along a conical surface
- Atomizer device for grinding wheel spindle
- Conical type wheel dressing device
- Workpiece driving device

- 手動式中心孔磨床
- 中心孔研磨範圍: 2~60 mm
- 外徑夾持範圍: 5~125 mm
- 工件長度夾持範圍: 50~2,000 mm
- 中心孔角度60°
- 一體成型床台
- 砂輪主軸採軸套組設計, 易保養
- 研磨後具有微小的油袋功能
- 砂輪主軸採行星運動
- 砂輪沿錐形表面直線往復運動
- 砂輪主軸噴霧式給油裝置
- 斜錐砂輪修整裝置
- 工件驅動裝置





## DOUBLE SPINDLE GRINDING MACHINE

雙主軸磨床



## VERTICAL GRINDING MACHINE

立式磨床



## JHD-15/32 Series 系列

- CNC internal, external grinding machine
- Range of I.D grinding: 2~200 mm
- Maximum grinding depth: 150 mm
- Maximum grinding O.D.: 320 mm
- Maximum grinding O.D. length: 200 mm
- Maximum swing over bed: 500 mm
- One-Piece fabricated base, box type structure, high rigidity
- 3 axes feeding system adopts high precision roller linear guide-way
- Double pre-tensioned ball screws
- Applicable B and C axis
- Manual swing angle wheel seat
- Optional built-in spindle
- Manual swing angle work head
- Automatic lubrication system
- CNC雙主軸內外圓磨床
- 內徑研磨範圍: 2~200 mm
- 最大研磨深度: 150mm
- 最大研磨外徑: 320 mm
- 最大研磨外徑長度: 200 mm
- 最大床面旋徑: 500 mm
- 一體成型床台、箱型結構、高剛性
- 三軸進給採用高精密級線性滾柱滑軌
- 雙預拉滾珠螺桿
- 可搭配B軸及C軸
- 手動調整角度之砂輪座
- 可選擇內藏式砂輪主軸
- 可手動調整角度之工作主軸
- 自動潤滑系統

## JHV Series 系列

- CNC vertical grinding machine
- Range of I.D grinding: 50~800 mm
- Maximum O.D. grinding: 1,000 mm
- Maximum grinding altitude: 800 mm
- Maximum installed parts altitude: 800 mm
- Center high (table to spindle): 1,800 mm
- Maximum work table loaded: 1,200 kg
- Mechanical structure adopt triangle principle design
- C type machine structure improved X and Z axes straightnes
- Adopts X axis slant guideway design utilizing gravity eliminate gap
- Work table adopts two ramps fit each other and rotation principle, became an adjustable leveling device
- German made hydrostatic rotary table
- Grinding wheel head spindle manually rotated  $\pm 30^\circ$
- Rotary type grinding wheel dressing attachment
- CNC 立式磨床
- 內徑研磨範圍: 50~800 mm
- 最大研磨外徑: 1,000 mm
- 最大研磨深度: 800 mm
- 最高可安裝工件: 800 mm
- 工作台至主軸高度: 1,800 mm
- 工作台最大荷重: 1,200 kg
- 機械結構採三角形作為設計基礎
- C型結構設計, 善X軸與Z軸的直線度
- X軸採用傾斜式軌道設計, 利用重力消除間隙
- 工作轉盤採2斜面相互契合與轉動原理, 自然形成可調整水平裝置
- 德國製造之液靜壓工作轉盤
- 砂輪主軸可手動旋轉  $\pm 30^\circ$
- 迴轉式砂輪修正機構