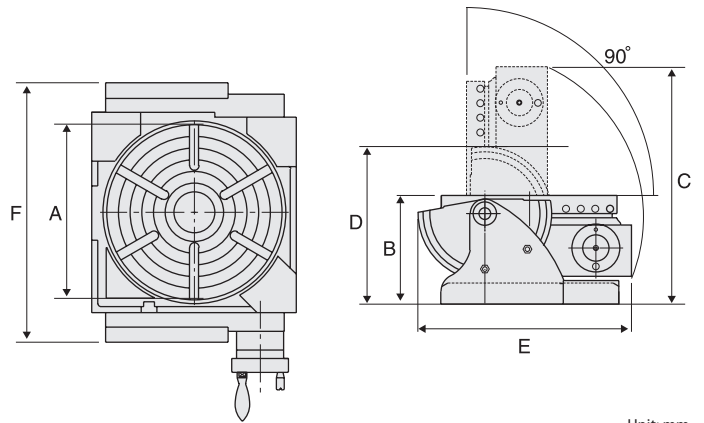


UNIVERSAL TILTING ROTARY TABLE Model: HUT-300

- QUICK MANUAL INDEXING.
- Suitable for milling, boring, shaping, drilling, dividing, setting angles and for circular cutting.
- Tilting range of 90 degrees from horizontal to vertical position. For the tilting operation each turn of the handwheel tilts the table by 3 degrees.
- 24 indexing holes around the edge of the table allow quick manual indexing.
- Graduations are large and clearly marked for quick and easy setting of complex angles.



OPTIONAL ACCESSORIES:

- Tail Stock
- Dividing Plate Set
- 7", 8" or 9" 3-Jaw Chuck

SPECIFICATIONS

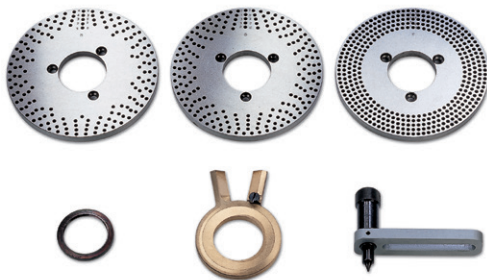
Model	A	B	C	D	E	F	GEAR RATIO	CENTER HOLE	DIRECT INDEXING	Weight (kg)
HUT-300	∅300	185	405	228	336	444	90:1	MT-5	2, 3, 4, 6, 8, 12, 24	93

Unit: mm

Dividing Plate Set

For HUT-300

Model:
HUT-300DP



NUMBER OF HOLES:

A Plate: 9, 28, 34, 41, 47, 10, 29, 35, 43, 49

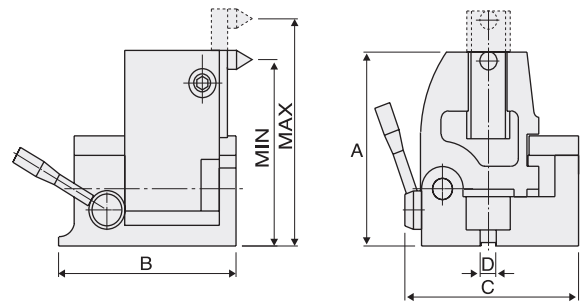
B Plate: 21, 31, 37, 44, 53, 26, 32, 38, 46, 59

C Plate: 61, 71, 77, 83, 91, 67, 73, 79, 89, 97

Tail Stock

For HUT-300

Model:
HUT-300TS



SPECIFICATIONS

Model	A	B	C	Center Height		E	Weight (kg)
				Max	Min		
HUT-300TS	200	196	190	230	113	16	23

Unit: mm