

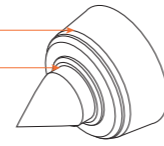
中負荷頂針

MEDIUM-LOAD TYPE

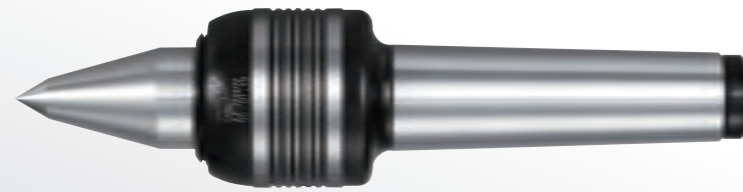
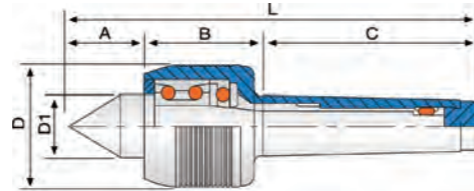
RPM: 5000 - 6500 MT/MK. 4, 5

NC 型 LIVE CENTER

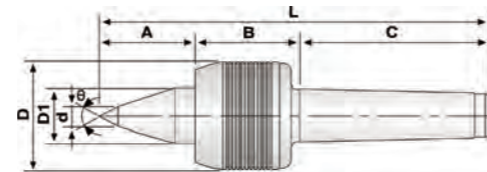
迷宮式迴轉頂針無油封防水結構
專利號碼 M553237
MAZE TYPE, WATERPROOF DESIGNED
WITHOUT SEAL, PAT. NO. M553237



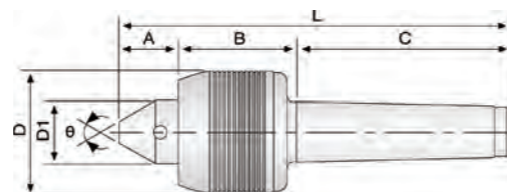
A-TYPE



B-TYPE

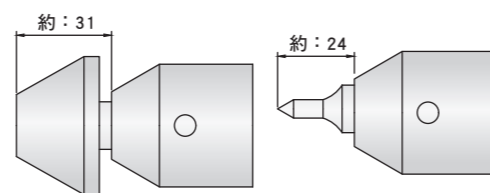
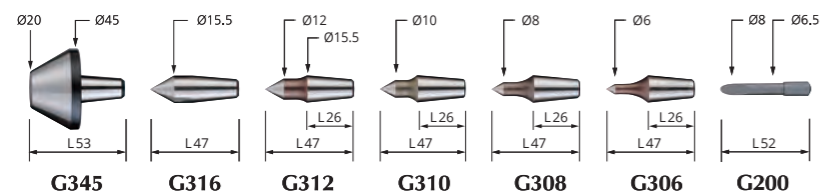


NCD 型 LIVE CENTER



單位/Unit:mm

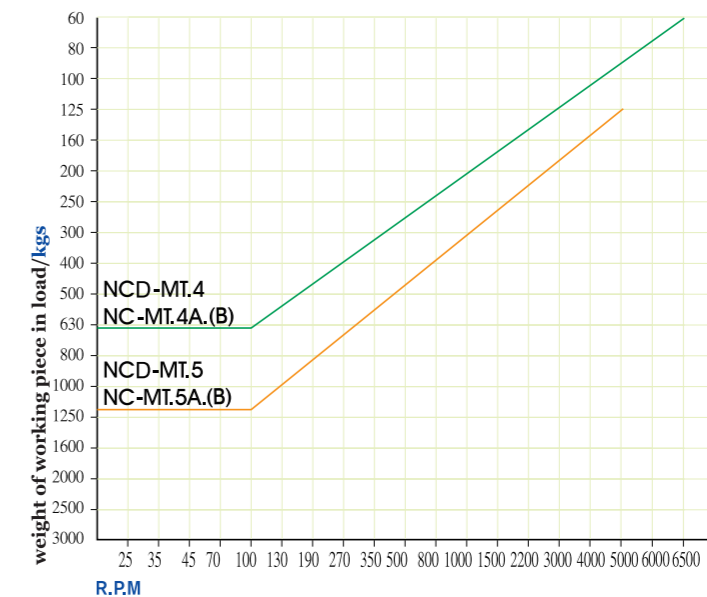
※ 頂針仔-安裝示意圖



NC 型 LIVE CENTER

1. 前端使用雙列斜角滾珠軸承及止推軸承，及滾針軸承之組合。
 2. 此頂針適用於CNC車床，具高速及中負荷使用，具防水性。
 3. 車床尾座調整壓力建議5~8公斤。
- ※ NC-B型;適合小工作物之加工切削。

1. Front end is fitted with angular contact ball bearing, thrust bearing and needle bearing.
 2. These centers are suitable for CNC lathes at high-speed and medium-load. Waterproof design, the waterproof is maze type.
 3. The tailstock pressure of lathe adjusts to five to eight kilograms (for reference)
- ※ NC-B type: Long nose live centers are suitable for small workpieces.



單位/Unit:mm

ORDER NO.	MORE TAPER MT/MK	A	B	C	D	D1	d	L	Co精度 Accuracy	Max R.P.M	θ	G.W. weight kgs	包裝尺寸 L x W x H
08200004	NC-MT.4A	44	55	108	53	30	-	207	0.003	6500R.P.M	60°	1.62 kgs	240 x 80 x 65
08200005	NC-MT.5A	48	61	136	68	35	-	245	0.003	5000R.P.M	60°	3.26 kgs	300 x 90 x 90
08200014	NC-MT.4B	52	55	108	53	30	12	215	0.003	6500R.P.M	60°	1.63 kgs	240 x 80 x 65
08200015	NC-MT.5B	58	61	136	68	35	14	255	0.003	5000R.P.M	60°	3.28 kgs	300 x 90 x 90
08200024	NCD-MT.4	33	55	108	53	30	-	196	0.005	6500R.P.M	60°	2.28 kgs	235 x 130 x 86
08200025	NCD-MT.5	37	61	136	68	35	-	234	0.005	5000R.P.M	60°	4.12 kgs	280 x 150 x 100