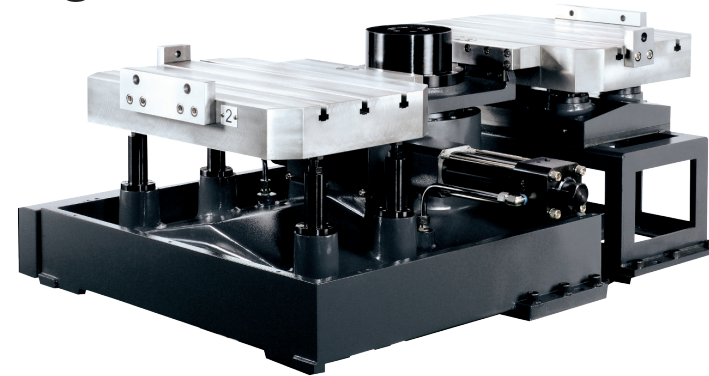


## Automatic Pallet Change System

### CVR-660

Rack type Pallet size  
Double pallet system (C type)



- || **EASY INSTALLATION:** The pallet change device is directly mounted on the base. Easy to install and space saving.
- || **FLEXIBLE PRODUCTION:** Available to equip with several tables to meet small lot flexible production requirements.
- || **GREAT LOADING CAPACITY:** Hydraulic drive. Workpiece loading capacity up to 300kg x 2 pcs.
- || **HIGH REPEATABILITY:** Employs high precision conical positioning blocks to ensure stability of table and repeatability in  $\pm 0.005\text{mm}$ .

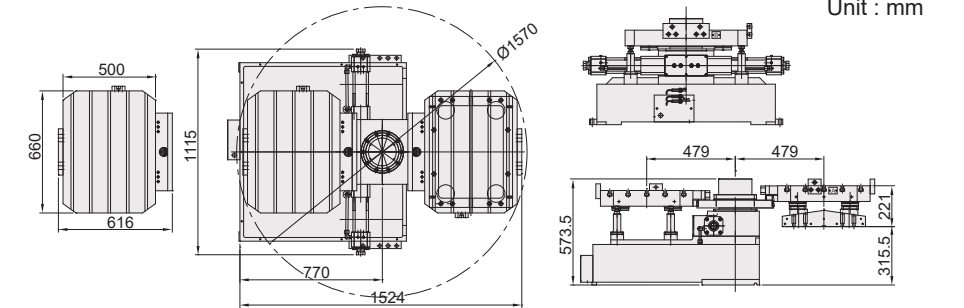
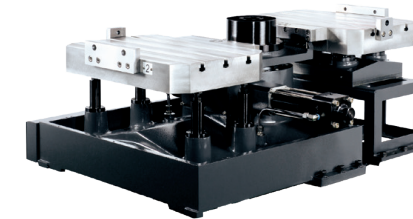
#### SPECIFICATIONS

MODEL	Unit	CVR-660	CVR-850	CVR-10D
Pallet sizes	mm / inch	660 x 500 / 25.98 x 19.69	850 x 500 / 33.46 x 19.69	1000 x 500 / 39.37 x 19.69
Number of pallets		2	2	2
Pallet change method		180° Swing	180° Swing	180° Swing
T-slot size	mm / inch	14H8 / 0.55H8	18H8 / 0.71H8	18H8 / 0.71H8
Drive method /pressure	MPa / psi	Hydraulic 6 / 870	Hydraulic 6 / 870	Hydraulic 6 / 870
Pallet clamping force	N / lbs	36850 / 8269.14	36850 / 8269.14	36850 / 8269.14
Cutting load resistant capacity	Nm / ft. lbs.	2940 / 2166.78	2940 / 2166.78	2940 / 2166.78
Pallet positioning method		Taper cone	Taper cone	Taper cone
Allowable loading capacity	Kg / lb	200 x 2 / 440 x 2	300 x 2 / 660 x 2	300 x 2 / 660 x 2
Allowable loading inertia	kg.m <sup>2</sup>	7.5 x 2	7.5 x 2	7.5 x 2
Lifting force	N / lbs	35280 / 7916.83	35280 / 7916.83	35280 / 7916.83
Pallet exchange mechanism	Pallet	Kg / lb	550 / 1210	550 / 1210
	Sub-pallet	Kg / lb	105 / 231	105 / 231
Weight(N.W.)	Pallet	Kg / lb	170x2 / 375x2	190 x 2 / 418 x 2
	Sub-pallet	Kg / lb	105 / 231	105 / 231

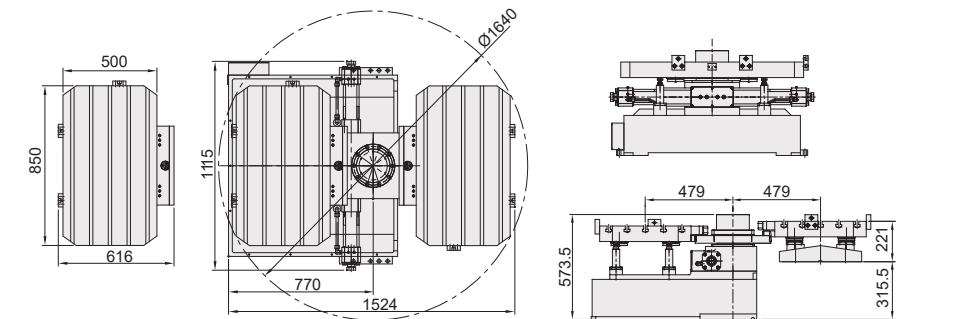
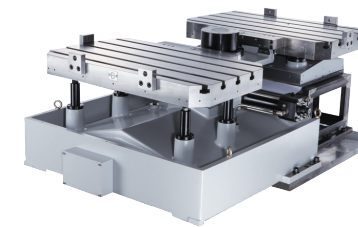
NOTE: 1. Pallet change time may varied with flow of pump, length and diameter of pipe.  
2. Allowable loading inertia means the allowable value at the distance of 450mm between the loading gravity and the APC center.

## DIMENSIONAL DRAWINGS

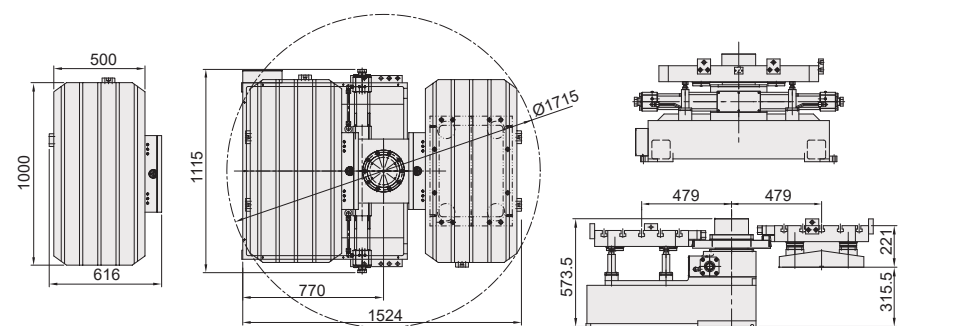
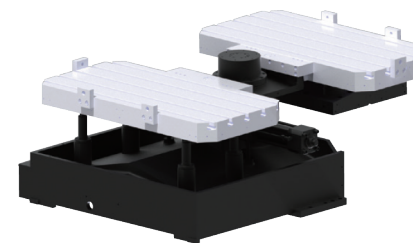
### CVR-660



### CVR-850



### CVR-10D

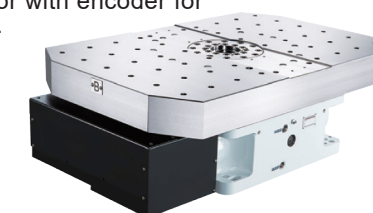


## SVC series

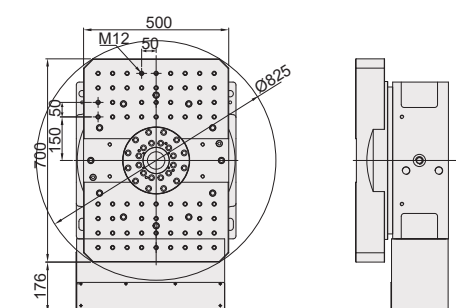
### SVC-7050 II

Roller gear cam type Pallet size  
Single pallet system (Column moving type)

- || Roller cam transmission perform backlash free without wear-out and stabilizes fast pallet change.
- || Applied for machining center with column movable. Change cycle in 3.5 sec.
- || Driven by servo motor with encoder for accurate positioning.

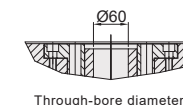


## Automatic Pallet Change System (Roller Gear Cam Type)



With flat structure

SVC-7050 II  
SVC-10065 II



Through-bore diameter