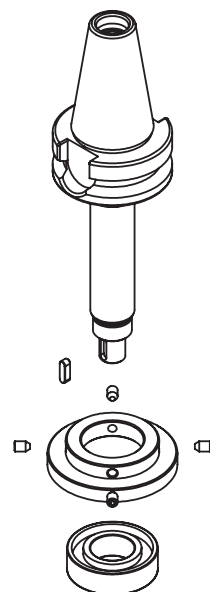


# 產品說明 & 影片 Description & Video

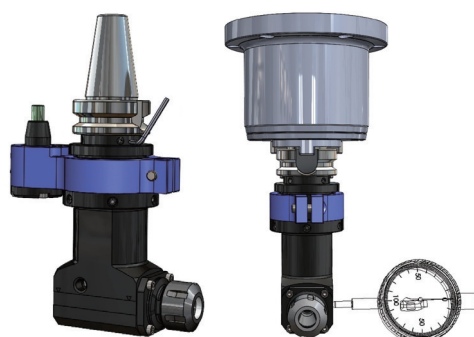
## 組裝 Assembly Manual



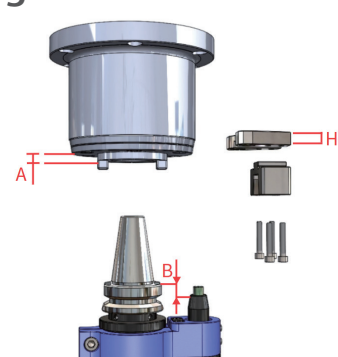
## 零件品號 Part Number



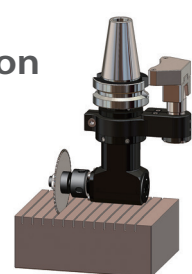
## 安裝 Installation



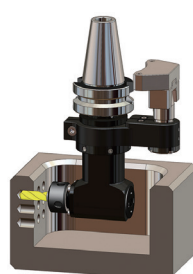
## 定位塊製作 Setting Block



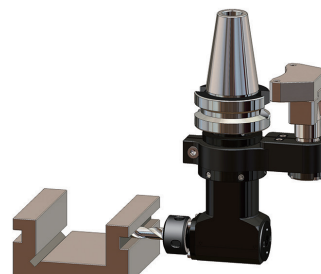
## 加工範例 Application



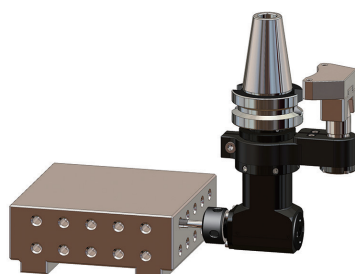
鋸切加工  
Saw and Cutting



內面加工  
Internal Machining



側面加工  
Side Machining



攻牙 & 鑽孔  
Tapping and Drilling



**豪力輝工業股份有限公司**  
HOLD WELL INDUSTRIAL CO., LTD.  
台中市大雅區雅環路2段120巷10弄31號  
No.31, Aly. 10, Ln. 120, Sec. 2, Yahuan Rd.,  
DaYa Dist., Taichung City 428, Taiwan (R.O.C.)  
contact@holdwell.com



[www.holdwell.com](http://www.holdwell.com)

2025/10



ISO 9001:2015  
ID 9105040234

# EVA

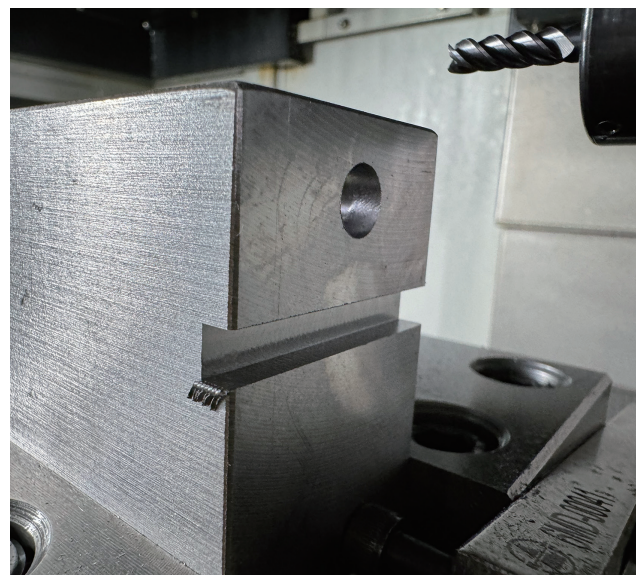
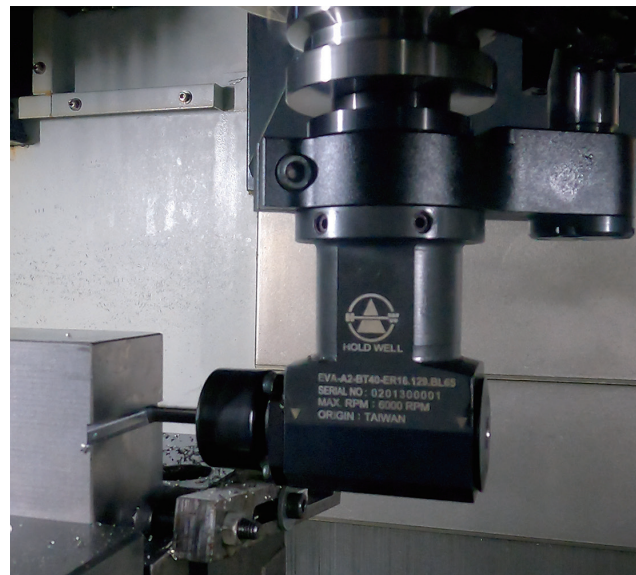
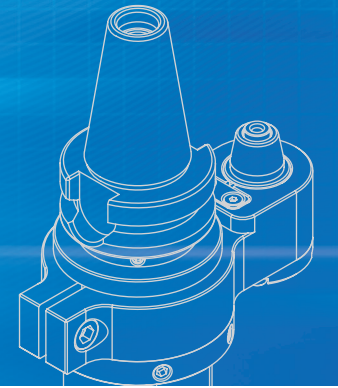


**橫銑頭**  
Angle Head



# 產品特色 Features

# 規格 Specification & Technical data



**EVA (Easy & Valuable) = 簡單維修 + 性價比高。**  
維修方便可以自己更換零件，有效縮短停機時間。選擇 EVA，讓金屬加工變得更加輕鬆生產不間斷。不論是鋼材、不鏽鋼、鋁材等金屬材質，EVA 橫銑頭都能加工。

**EVA (Easy & Valuable) = Easy to Maintain + Great Value.**

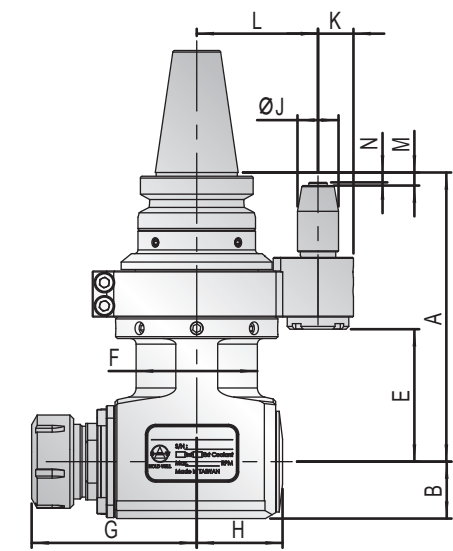
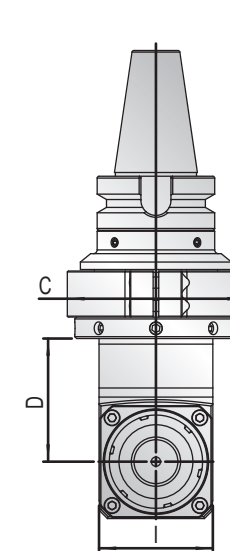
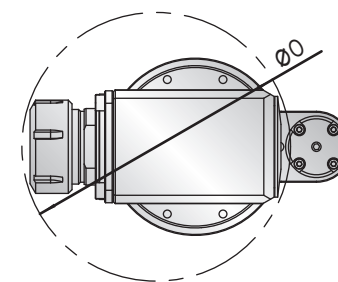
Maintaining it is a breeze—you can swap out parts yourself and cut down on downtime. Go with EVA to make metalworking simpler and keep production running smoothly. Whether you're working with steel, stainless steel, aluminum, or other metals, the EVA angle head gets the job done with ease.

- 輕量化設計，適用於鑽銑加工及攻牙加工。
- 自動刀庫換刀加工，量化生產必備工具。
- 環抱型定位塊設計，可 360 度旋轉調整加工角度，並加強鎖固力道及加工角度精確性。
- 經濟超值款，自主維修更換零件，無須送回原廠提高生產效率。

- Compact and lighter body design is suitable for drilling, milling, and tapping application.
- Can be automatic tool changed. Increases productivity.
- Enclosed Positioning Pin: Cutting Direction can be adjusted from 0~360 degrees. It allows higher clamping torque and cutting direction could remain during the machining.
- Cost-effective. Support DIY repair. Don't need to return to original factory. Increase productivity.



	Gear Ratio 齒輪比	1:1		Torque (Max.) 最大扭力	A2:8 Nm A4:30 Nm
	RPM (Max.) 最高轉速	A2:6,000 RPM A4:4,000 RPM		Drilling (Max.) 最大鑽孔	A2:8mm A4:16mm
	Rotation 轉向			Tapping (Max.) 最大攻牙	A2:M6 A4:M12



單位：mm

Model No.	A	B	C	D	E	F	G	H	I	J	K	L	M	N	O	N.W(KG)
EVA-A2-BT30-ER16.120.BS50	120	17	60	56	58.5	44	56.6	30	38	16	16.5	50	17	13.5	91	1.8
EVA-A2-BT30-ER16.120.BL65	120	17	60	56	58.5	44	56.6	30	38	16	16.5	65	7	3.5	91	2.0
EVA-A2-BT40-ER16.129.BL65	129	17	60	56	58.5	44	56.6	30	38	22	16.5	65	7	5.3	91	2.8

\* 本公司保有變動規格及顏色的權益，請聯絡當地代理或業務人員已獲得最新資訊。

\*All specifications are subject to change without further notice. Please consult your local dealer or agent for latest information.