

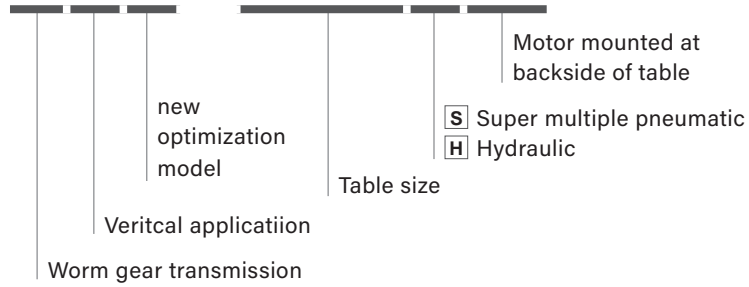
GVA-B series

CNC Rotary Table

High - Power Clamp, Motor at Back



GVA - 210SB



Worktable diameter $\varnothing 170, \varnothing 210, \varnothing 255$.
 GVA-SB series is new "super multiple brake" mechanism for pneumatic clamp.(P.19)
 Full gear depth transmitted by dual lead worm drive, resulting in higher efficiency and lower backlash.(P.20)

SPECIFICATIONS

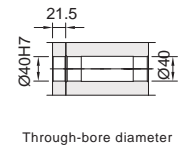
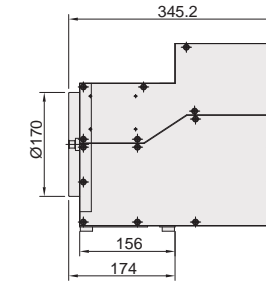
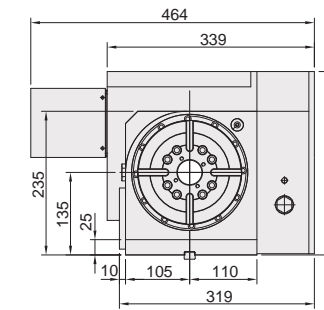
MODEL	Unit	GV-170SB	GVA-210SB	GVA-255HB	
Worktable diameter	mm / inch	$\varnothing 170 / \varnothing 6.69$	$\varnothing 210 / \varnothing 8.27$	$\varnothing 255 / \varnothing 10.04$	
Center bore diameter	mm / inch	$\varnothing 40H7 / \varnothing 1.57H7$	$\varnothing 65H7 / \varnothing 2.6H7$	$\varnothing 140H7 / \varnothing 5.51H7$	
Height of center (vertical)	mm / inch	135 / 5.31	160 / 6.30	190 / 7.48	
Width of T-slot	mm / inch	12H7 / 0.47H7	12H7 / 0.47H7	12H7 / 0.47H7	
Width of guide block	mm / inch	18 / 0.71	18 / 0.71	18 / 0.71	
Clamping method / pressure	Mpa / psi	Super Multi- Pneumatic 0.55 ~ 0.7 / 79.8 ~ 101.5	Super Multi- Pneumatic 0.55 ~ 0.7 / 79.8 ~ 101.5	Hydraulic 5 / 725	
Clamping torque	Nm / ft. lbs.	250 / 184.25	400 / 294.8	900 / 663.3	
Servo motor spec		refer to page 69			
Transmission ratio		1 / 90	1 / 90	1 / 120	
Max. table speed	min ⁻¹	44.4	44.4	22.2	
Allowable loading inertia	$\frac{W \cdot D^2}{8}$ Kg.m ²	0.28	0.68	1.21	
Resolution	deg.	0.001	0.001	0.001	
Indexing accuracy	sec.	20	20	15	
Repeatability	sec.	6	6	6	
Net weight (servo motor excluded)	kg / lb	90 / 198	84 / 184.8	149 / 328	
Allowable loading capacity	Vertical	kg / lb	75 / 165	125 / 275	150 / 330.0
	Tailstock applied	kg / lb	150 / 330	250 / 550	300 / 660
Allowable load (when table clamped)	N / lbs		14000 / 3141.60	17000 / 3814.8	20000 / 4488
	Nm / ft. lbs.		1020 / 751.74	1265 / 932.3	1700 / 1253.0
	Nm / ft. lbs.		250 / 184.25	400 / 294.80	900 / 663.3
Allowable cutting torque	Nm / ft. lbs.		170 / 125.29	260 / 191.62	550 / 405.35

Note: Allowable cutting torque at table speed of 1 min⁻¹.

DIMENSIONAL DRAWINGS

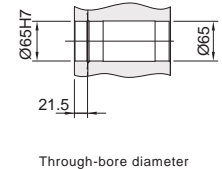
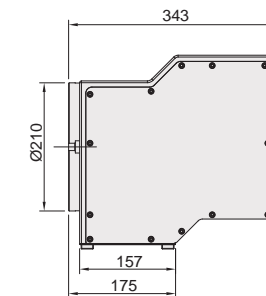
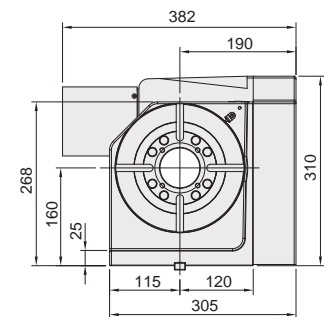
Unit : mm

GV-170SB



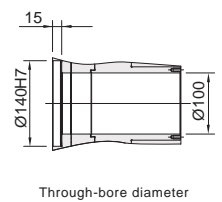
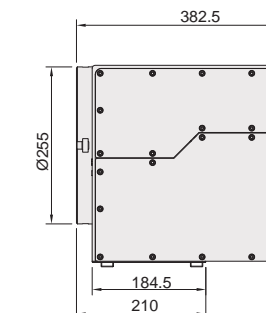
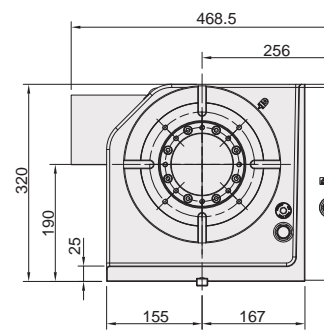
Equipped with upgraded high precision cross roller bearing.

GVA-210SB



Equipped with upgraded high precision cross roller bearing.

GVA-255HBII



Consolidated spindle with YRT bearing built-in.

Note: The length of servo guard may vary with servo motor type.
 (metal sheet dimensions shown above are based on Fanuc motor)