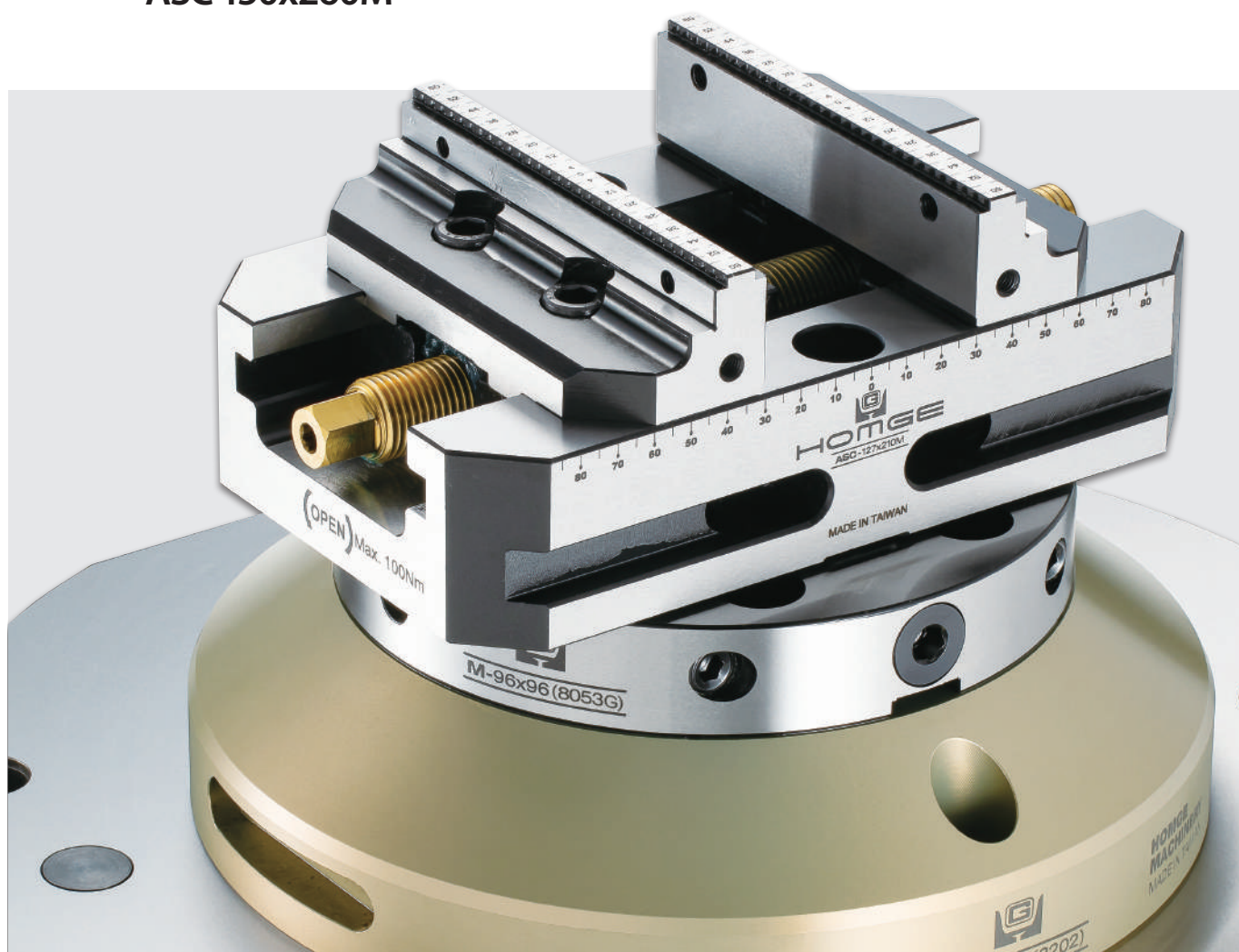


FIVE-AXIS ADJUSTABLE SELF-CENTERING VISE

Model: ASC-127x130M, 127x160M, 127x210M, 127x260M,
ASC-150x260M



- Special 45° dovetail structure with teeth
- With a pair of mounting holes, ASC-M series can be directly fixed on the 3rd, 4th or 5th-Axis machine bed.
- Purchase an additional Fixed Jaw to enable dual clamping.



ASC-M Series

STANDARD ACCESSORIES:

- 4 pcs of Clamp
- 1 pc of Wrench

<p>Vise body is made of High quality Steel (S50C) and its slideways gone through high-frequency hardening to achieve HRC50, which makes the whole part durable.</p>	<p>The vise body can be mounted directly on the machine table by the middle with 2 pieces of M12 screws. This vise also can clamp 2 workpieces by mounting the centre jaw in the middle.</p>	<p>Detachable jaws are made of High quality Tool Steel (SCM440) and gone through carburizing to achieve HRC55. Since both sides are fixed size and able to be used as a datum, users can reverse them to increase clamping range.</p>	<p>The vise's clamping force can achieve 1300KG, the repeatability positioning precision of its clamping center is within ±0.02mm.</p>	<p>The 45° dovetail structure with teeth on the upper jaw ensures the bottom of the workpiece to be firmly clamped.</p>
1	2	3	4	5



Users can calibrate the clamping center of vise by adjusting the nut in the middle.

6

ASGM Series

Model: ASC-127x130M, 127x160M, 127x210M, 127x260M,
ASC-150x260M



ASC-127x130M

Size 135x127x80 mm

Weight (kg) 7.3



ASC-127x160M

Size 165x127x80 mm

Weight (kg) 7.5



ASC-127x210M

Size 215x127x80 mm

Weight (kg) 8.5



ASC-127x260M

Size 265x127x80 mm

Weight (kg) 10



ASC-150x260M

Size 265x150x80 mm

Weight (kg) 13.5

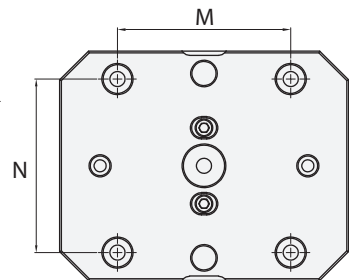
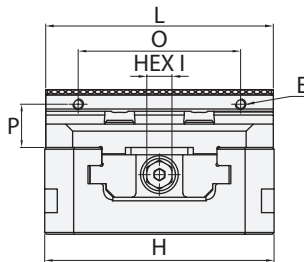
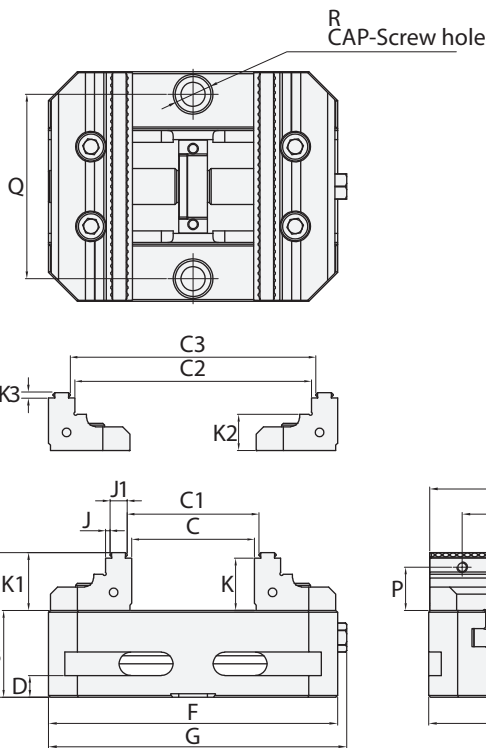
Optional Accessories



Center Jaw



Flexi Jaws



OPTIONAL ACCESSORIES:

- Rectangular Plate
- Master Gauging Pallet
- Pull Studs
- Spacer Studs

Please refer to Page 22~53
Zero Point Quick Change Devices

SPECIFICATIONS (Material: Vise body S50C. Hardness: HRC 50/ Detachable Jaws SCM440. Hardness: HRC 55)

Unit: mm

Model	A	B	C	C1	C2	C3	D	E	F	G	H	I	J	J1
ASC-127x130M	80	48	40	45	101	106	12	M6	130	135	127	14	2.5	9.5
ASC-127x160M	80	48	70	75	131	136	12	M6	160	165	127	14	2.5	9.5
ASC-127x210M	80	48	120	125	181	186	12	M6	210	215	127	14	2.5	9.5
ASC-127x260M	80	48	170	175	231	236	12	M6	260	265	127	14	2.5	9.5
ASC-150x260M	80	48	170	175	231	236	12	M6	260	265	150	14	2.5	9.5

Model	K	K1	K2	K3	L	M	N	O	P	Q	R	Pull Stud	Weight(kg)
ASC-127x130M	29	32	20	3	126	96	96	90	24	102	M12	M-96x96PS	7.3
ASC-127x160M	29	32	20	3	126	96	96	90	24	102	M12	M-96x96PS	7.5
ASC-127x210M	29	32	20	3	126	96	96	90	24	102	M12	M-96x96PS	8.5
ASC-127x260M	29	32	20	3	126	96	96	90	24	102	M12	M-96x96PS	10
ASC-150x260M	29	32	20	3	149	96	96	90	24	120	M12	M-96x96PS	13.5

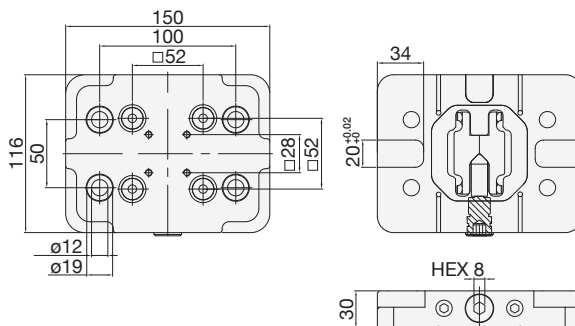
Optional Accessories

Please refer to Page 22~53 Zero Point Quick Change Devices

Rectangular Plate

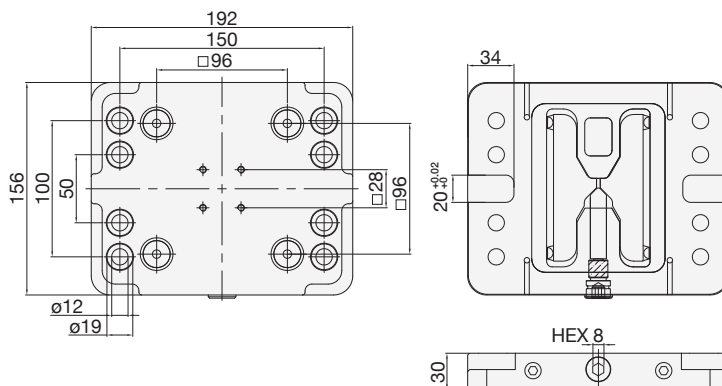
Model: M-52x52 (8001G)

- Size: 150x116x30 mm
- Pull Stud: M-52x52PS
- Weight: 3.2 kg
- Suitable for
ASC-77x102S
ASC-77x130S
ASC-77x170S
ASC-77x210S



Model: M-96x96 (8051G)

- Size: 192x156x30 mm
- Pull Stud: M-96x96PS
- Weight: 6.4 kg
- Suitable for
ASC-127x160S
ASC-127x210S
ASC-127x260S
ASC-127x310S
ASC-127x360S



Master Gauging Pallet

Suitable for quick checking the precise alignment of Quick Changing Plates and for concentric alignment of rotary or chucks.

Model: M-52x52 (8010)

- Size: 80x80x27 mm
- Pull Stud: M-52x52PS
- Weight: 1.1 kg



Model: M-96x96 (8058)

- Size: 126x126x27 mm
- Pull Stud: M-96x96PS
- Weight: 2.6 kg



Pull Studs

Can be adapted onto vises or workpieces to use together with any Quick Change Device.

Model: M-52x52PS

- 4 pcs / set
- Weight: 0.16 kg / set



Model: M-96x96PS

- 4 pcs / set
- Weight: 0.28 kg / set



Spacer Studs

Improve the machining accessibility of edges or angles by making a through space between workpieces and Quick Change Devices.

Model: M-52x52SS

- 4 pcs / set
- Weight: 0.27 kg / set



Model: M-96x96SS

- 4 pcs / set
- Weight: 0.4 kg / set

