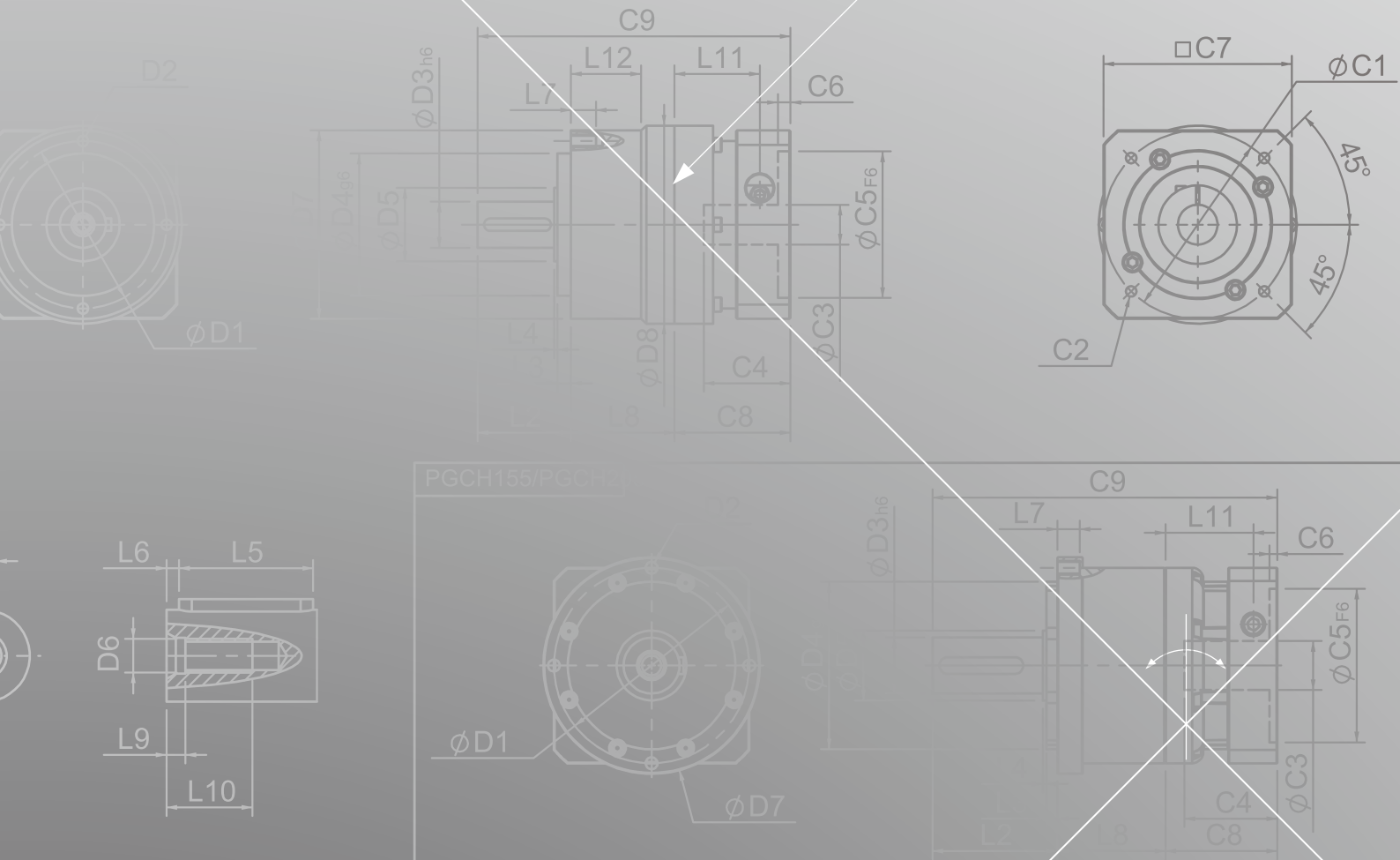
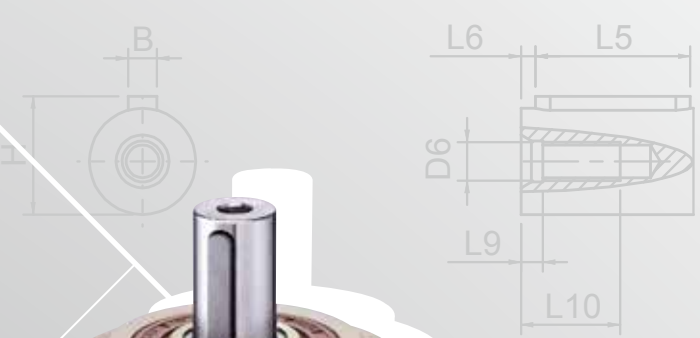
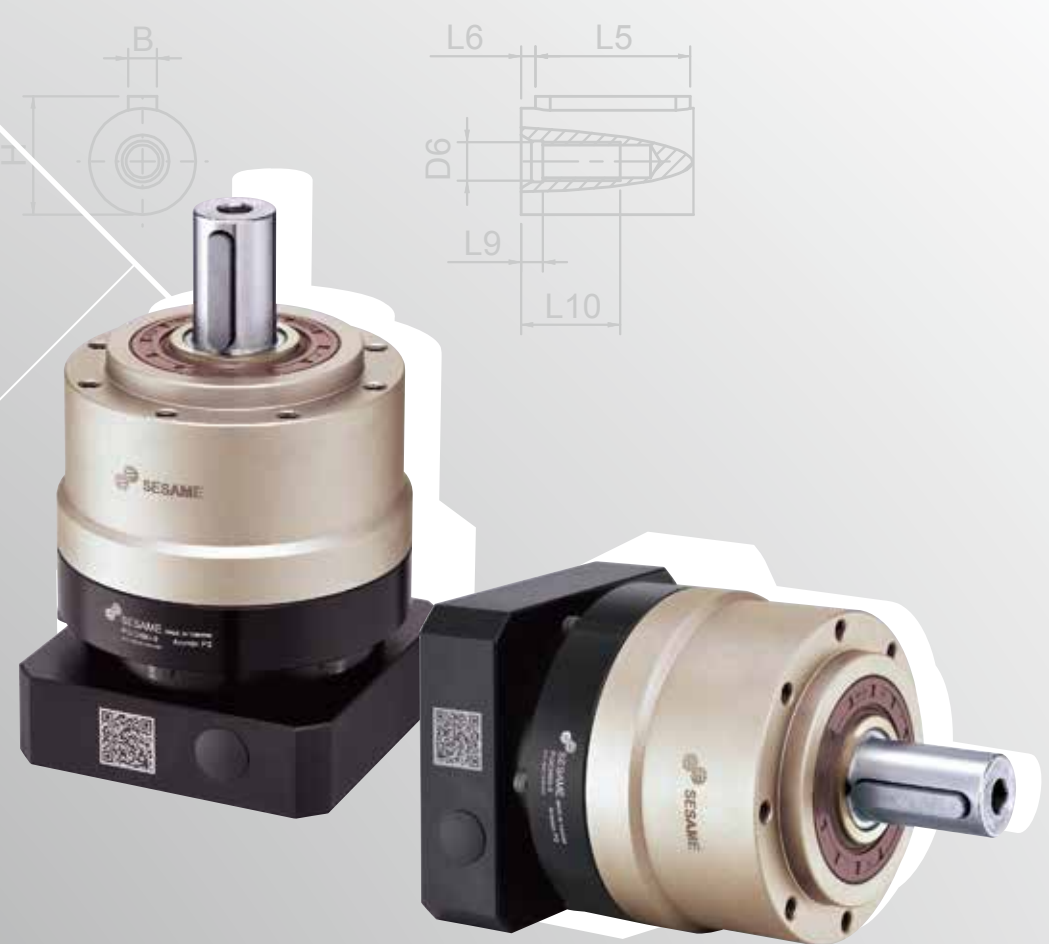
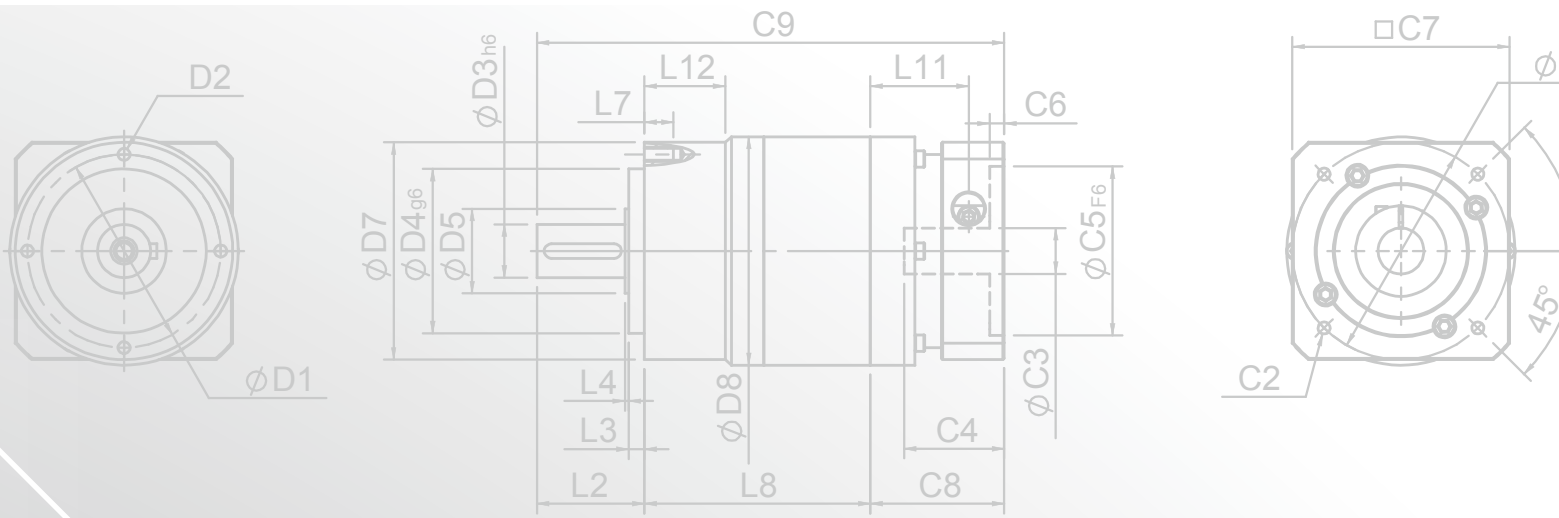
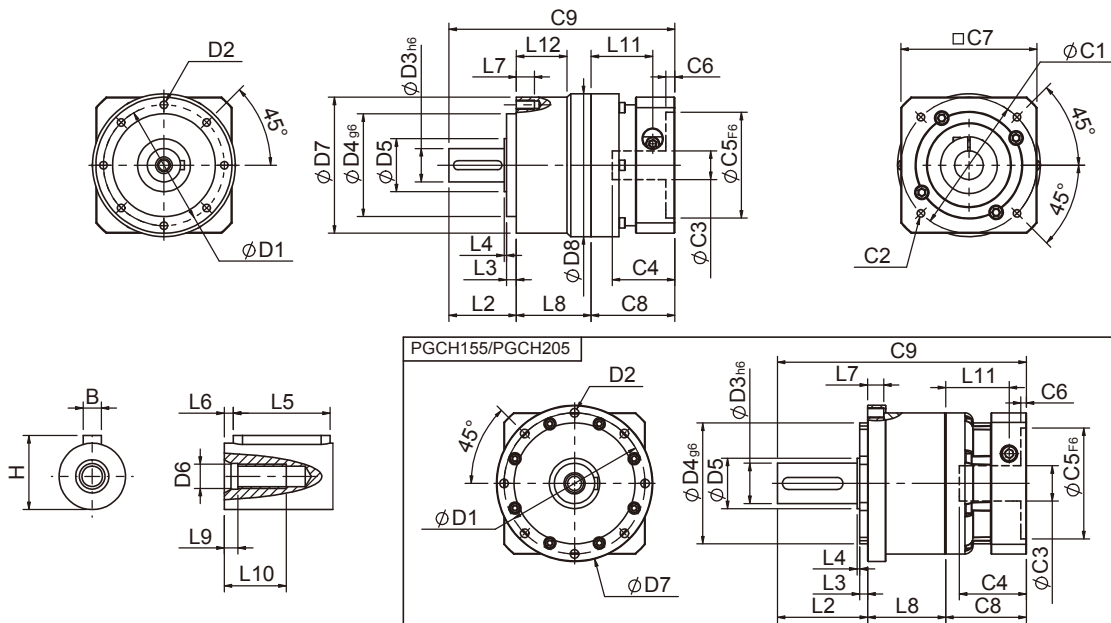


PGCH SERIES





PGCH Single Stage Dimensions PGCH單段外型尺寸圖



Specifications 規格

Unit:mm

Dimensions 尺寸	PGCH50	PGCH70	PGCH90	PGCH120	PGCH155	PGCH205	PGCH235
D1	44	62	80	108	140	184	210
D2	M4x0.7P	M5x0.8P	M6x1.0P	M8x1.25P	M10x1.5P	M12x1.75P	M16x2.0P
D3 _{h6}	12	16	22	32	40	55	75
D4 _{g6}	35	52	68	90	120	160	180
D5	15	25	35	45	50	70	114.5
D6	M4x0.7P	M5x0.8P	M8x1.25P	M12x1.75P	M16x2.0P	M20x2.5P	M20x2.5P
D7	50	70	90	120	155	205	235
D8	50	70	94.5	120	-	-	253
L2	24.5	36	44.5	60	89.5	96.5	126
L3	4	6	6.5	7	8	12	18
L4	1	1.5	1.5	3.5	2.5	2.5	3
L5	15	25	32	40	60	70	90
L6	2	2	3	5	5	6	7
L7	8	10	12	16	16	20	28
L8	29.8	38	49.5	60	77.5	98	124
L9	4	4	4.5	6	6	8	15
L10	12	16.5	20.5	30	38	48	42
L11	29	35.4	40.7	53.7	63	69.5	95
L12	-	-	33.5	-	-	-	70
C1 ²	46	70	90	115	145	200	235
C2 ²	M4x0.7P	M5x0.8P	M6x1.0P	M8x1.25P	M8x1.25P	M12x1.75P	M12x1.75P
C3 ²	≤8/≤11	≤14/≤19	≤19/≤24	≤24/≤32/≤38	≤35/≤38	≤50	≤55
C4 ²	26.5	37.6	41.4	51.3	66.5	77	112
C5 ² _{F6}	30	50	70	95	110	114.3	200
C6 ²	4.1	4.5	6	6	5.5	6	6
C7 ²	42	60	90	115	140	180	220
C8 ²	38.1	46.5	55.4	70	80	90	120
C9 ²	92.4	120.5	149.4	190	247	284.5	370
B	4	5	6	10	12	16	20
H	13.5	18	24.5	35	43	59	79.5

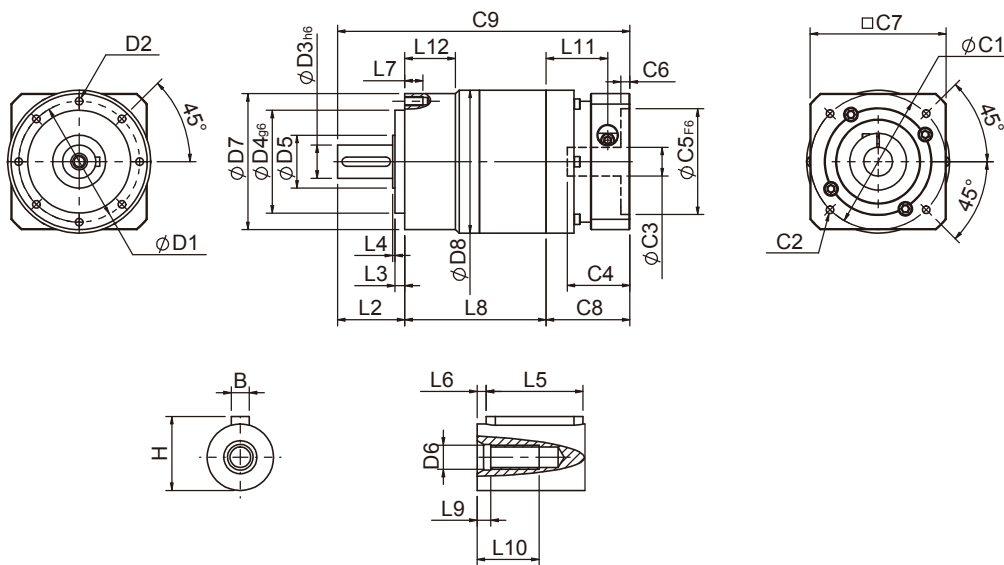
★ C1~C9是公製標準馬達連接板尺寸,請依所選用的馬達決定.

★ 本公司有權針對以上數據規格逕行設計變更不先行告知.

★ C1~C9 are motor specific dimensions(metric std shown), Size may vary according to the motor flange chosen.

★ Specification subject to change without notice.

PGCH Double Stage Dimensions-1 PGCH雙段外型尺寸圖-1



Specifications 規格

Unit:mm

尺寸 Dimensions	PGCH50	PGCH70	PGCH90
D1	4	62	80
D2	M4x0.7P	M5x0.8P	M6x1.0P
D3h6	12	16	22
D4g6	35	52	68
D5	15	25	35
D6	M4x0.7P	M5x0.8P	M8x1.25P
D7	50	70	90
D8	50	70	94.5
L2	24.5	36	44.5
L3	4	6	6.5
L4	1	1.5	1.5
L5	15	25	32
L6	2	2	3
L7	8	10	12
L8	56.8	71	93.5
L9	4	4	4.5
L10	12	16.5	20.5
L11	29	35.4	40.7
L12	-	-	33.5
C1 ²	46	70	90
C2 ²	M4x0.7P	M5x0.8P	M6x1.0P
C3 ²	≤8/≤11	≤14/≤19	≤19/≤24
C4 ²	26.5	37.6	41.4
C5 ² F6	30	50	70
C6 ²	4.1	4.5	6
C7 ²	42	60	90
C8 ²	38.1	46.5	55.4
C9 ²	119.4	153.5	193.4
B	4	5	6
H	13.5	18	24.5

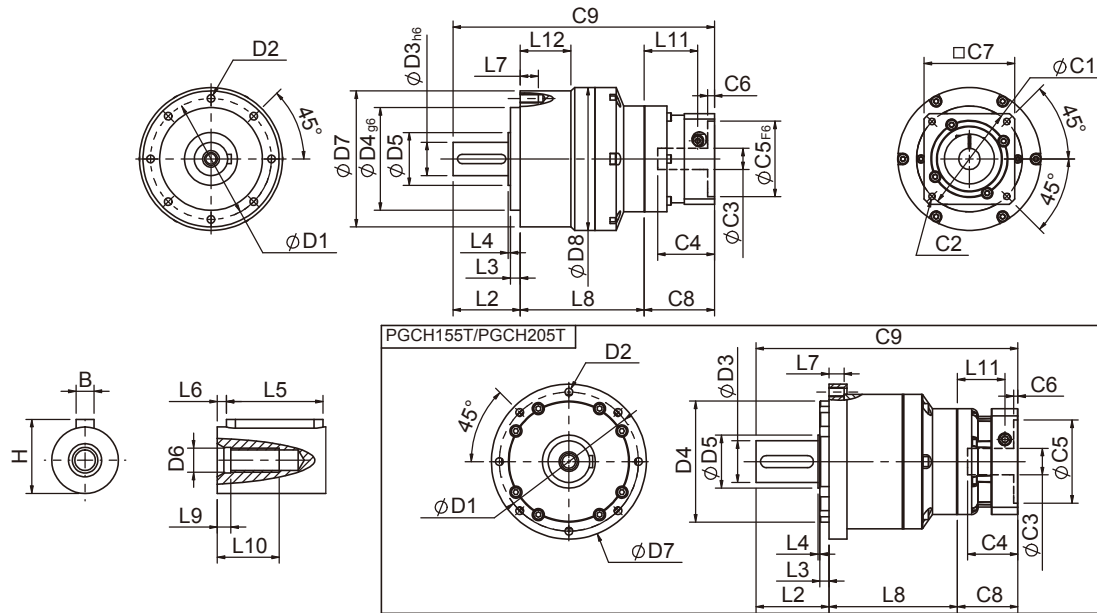
★ C1~C9是公製標準馬達連接板尺寸,請依所選用的馬達決定。

★ 本公司有權針對以上數據規格進行設計變更不先行告知。

★ C1~C9 are motor specific dimensions(metric std shown), Size may vary according to the motor flange chosen.

★ Specification subject to change without notice.

PGCH Double Stage Dimensions-2 PGCH雙段外型尺寸圖-2



Specifications 規格

Unit:mm

Dimensions 尺寸	PGCH70T	PGCH90T	PGCH120T	PGCH155T	PGCH205T	PGCH235T
D1	62	80	108	140	184	210
D2	M5x0.8P	M6x1.0P	M8x1.25P	M10x1.5P	M12x1.75P	M16x2.0P
D3 _{h6}	16	22	32	40	55	75
D4 _{g6}	52	68	90	120	160	180
D5	25	35	45	50	70	114.5
D6	M5x0.8P	M8x1.25P	M12x1.75P	M16x2.0P	M20x2.5P	M20x2.5P
D7	70	90	120	155	205	235
D8	70	94.5	120	-	-	253
L2	36	44.5	60	89.5	96.5	126
L3	6	6.5	7	8	12	18
L4	1.5	1.5	3.5	2.5	2.5	3
L5	25	32	40	60	70	90
L6	2	3	5	5	6	7
L7	10	12	16	16	20	28
L8	66.5	82	102.5	129.5	170	215
L9	4	4.5	6	6	8	15
L10	16.5	20.5	30	38	48	42
L11	29	35.4	40.7	53.7	63	68.9
L12	-	33.5	-	-	-	70
C1 ²	46	70	90	115	145	200
C2 ²	M4x0.7P	M5x0.8P	M6x1.0P	M8x1.25P	M8x1.25P	M12x1.75P
C3 ²	≤8/≤11	≤14/≤19	≤19/≤24	≤24/≤32/≤38	≤35/≤38	≤50
C4 ²	26.5	37.6	41.4	51.3	66.5	77
C5 ² _{F6}	30	50	70	95	110	114.3
C6 ²	4.1	4.5	6	6	5.5	6
C7 ²	42	60	90	115	140	180
C8 ²	38.1	46.5	55.4	70	80	90
C9 ²	140.6	173	217.9	289	346.5	431
B	5	6	10	12	16	20
H	18	24.5	35	43	59	79.5

★ C1~C9是公製標準馬達連接板尺寸,請依所選用的馬達決定。

★ C1~C9 are motor specific dimensions(metric std shown), Size may vary according to the motor flange chosen.

★ 本公司有權針對以上數據規格進行設計變更不先行告知。

★ Specification subject to change without notice.

PGCH Specifications Table PGCH性能規格共表

規格 Specifications	節數 Stage	減速比 Ratio	PGCH-50	PGCH-70	PGCH-90	PGCH-120	PGCH-155	PGCH-205	PGCH-235	
額定輸出力矩 T_{2N} Nominal Output Torque	1	3	19	53	145	290	520	950	1100	
		4	20	55	150	300	550	1000	1700	
		5	17	54	140	330	600	1050	2000	
		6	15	46	135	310	560	1000	1900	
		7	14	44	125	300	530	960	1800	
		8	12	41	110	260	480	900	1600	
		9	11	37	95	230	430	800	1500	
		10	11	37	95	230	430	800	1500	
		2	15	19	53	145	290	520	950	2000
			20	20	55	150	300	550	1000	2000
	25		17	54	140	330	600	1050	2000	
	30		17	54	140	330	600	1050	2000	
	35		17	54	140	330	600	1050	2000	
	40		17	54	140	330	600	1050	2000	
	45		17	54	140	330	600	1050	2000	
	50		17	54	140	330	600	1050	2000	
	60		15	46	135	310	560	1000	2000	
	70		14	44	125	300	530	960	1900	
	80	12	41	110	260	480	900	1800		
90	11	37	95	230	430	800	1600			
100	11	37	95	230	430	800	1500			
急停力矩 T_{2NOT} Emergency Stop Torque	N · m	3.0倍額定輸出力矩 (3.0 times of Nominal Output Torque) (* 最大輸出力矩 Max. Output Torque T_{2B} = 60% of Emergency Stop Torque)								
額定輸入轉速 n_{1N} Nominal Input Speed	rpm	1,2	3-100	5000	4000	4000	4000	3000	2500	2000
最大輸入轉速 n_{1max} Max. Input Speed	rpm	1,2	3-100	10000	8000	8000	8000	5000	4000	3500
精密背隙 Micro Backlash P0	arcmin	1	3-10	≤ 4	≤ 4	≤ 4	≤ 3	≤ 3	≤ 3	≤ 3
		2	12-100	≤ 6	≤ 6	≤ 6	≤ 5	≤ 5	≤ 5	≤ 5
精密背隙 Precision Backlash P1	arcmin	1	3-10	≤ 6	≤ 6	≤ 6	≤ 5	≤ 5	≤ 5	≤ 5
		2	12-100	≤ 8	≤ 8	≤ 8	≤ 7	≤ 7	≤ 7	≤ 7
標準背隙 Standard Backlash P2	arcmin	1	3-10	≤ 8	≤ 8	≤ 8	≤ 7	≤ 7	≤ 7	≤ 7
		2	12-100	≤ 10	≤ 10	≤ 10	≤ 9	≤ 9	≤ 9	≤ 9
扭轉剛性 Torsional Rigidity	N · m / arcmin	1,2	3-100	3	7	14	25	50	145	300
容許徑向力 F_{2rB}^1 Max. Radial Load	N	1,2	3-100	702	1377	2985	6100	7140	11050	28000
容許軸向力 F_{2aB}^1 Max. Axial Load	N	1,2	3-100	410	765	1625	3350	4670	6460	15000
使用溫度 Operating Temp.	°C		3-100	-10°C ~ +90°C						
使用壽命 Service Life	hr		3-100	20,000 (10,000/連續運轉 Continuous operation)						
效率 Efficiency	%	1	3-10	≥ 97%						
		2	12-100	≥ 94%						
重量 Weight	kg	1	3-10	0.6	1.3	3.5	7.8	16.1	27	55
		2	12-100	0.9	2.0/1.6	5.6/3.9	9.5	19	34	67
安裝方向 Mounting Position	-	1,2	3-100	任意方向 Any Direction						
噪音值 Noise Level ²	dB(A)/1m	1,2	3-100	56	58	60	63	65	67	70
防護等級 Protection Class	-	1,2	3-100	IP65						
潤滑 Lubrication	-	1,2	3-100	全合成潤滑油脂 Synthetic Lubricant						
減速機轉動慣量 Inertia (J1)										
節數 Stage	減速比 Ratio	單位 unit	PGCH-50	PGCH-70	PGCH-90	PGCH-120	PGCH-155	PGCH-205	PGCH-235	
1	3	Kg · cm ²	0.03	0.23	0.97	2.35	10.00	30.50	79.50	
	4		0.02	0.18	0.67	1.66	7.17	25.86	58.21	
	5		0.02	0.17	0.65	1.50	6.52	23.63	54.36	
	6/7/8		0.02	0.14	0.60	1.45	6.17	22.92	54.12	
	9/10		0.02	0.14	0.58	1.41	6.10	22.73	53.98	
節數 Stage	減速比 Ratio		PGCH-50	PGCH-70(T)	PGCH-90(T)	PGCH-120T	PGCH-155T	PGCH-205T	PGCH-235T	
2	15/20/25		0.02	0.17(0.02)	0.65(0.17)	0.65	1.50	6.52	30.50	
	30/35/40		0.02	0.14(0.02)	0.60(0.14)	0.60	1.45	6.17	22.92	
	45/50/60/70/80/90/100		0.02	0.14(0.02)	0.58(0.14)	0.58	1.41	6.10	22.73	

* 1. 輸出轉速 100rpm 時，作用於輸出軸中心位置。Applied to the output shaft center @100rpm.
 * 2. 3000rpm 空載量測。Measured at 3000 rpm with no load. These values are measured by gearbox with ratio = 10 (1-stage) or ratio = 100 (2-stage) at nominal input speed or 3000 rpm (if nominal input speed is higher than 3000 rpm) with no load.
 ※本公司有權對以上數據規格逕行設計變更不先行告知。The above figures/specifications are subject to change without prior notice.

Products due to human error, natural disasters or other factors lead to poor or damaged, will not be covered under warranty.
 產品因人為原因或天災等因素導致不良或損壞，不在保固範圍內。