



# GREEN ECO PRO



AIR



WATER



WASTE



CUSTOMIZATION

**2011**  
**RWWA**  
 WWW.RWWA.COM.TW  
 The beginning of R&D on the basis of environmentally.

**2014**  
 Green Eco Pro Co., Ltd  
  
 Launch the purification facility of CNC water tank. [Ultra360]

**2015**  
 Standard model [Ultra 90]  
 Customize model [Ultra1200]

**2016**  
  
 [GEP 200] / [FC 180]  
 An integrated waste management equipment to process wastewater and air pollution, relieving CNC users of environmental burdens.

**2017**  
  
 Established America office  
 Expand foreign market for over 10 countries.

**2019**  
*New products*  
  
 [GEP 200S]  
 Economic oil mist collector  
 [FCG 105 auto]  
 Automatic filtration system  
 A great helper for quartz grinding and EDM plants.

Our Mission

Green Eco Pro, also known as the sweeper in all industries, provides environmental solutions for customers, adhering to the concepts of independent R&D and innovation. It integrates the equipment of air, water, and waste control to build a friendly environment of recycling, zero-emission, and zero-pollution.

The products of Green Eco Pro apply to all kinds of CNC milling machine, lathe, machining center of gantry type, lathe and milling composite machine, ultraspindle machining center, The products are safe and reliable, with no consumables and exclusive patents. In recent years, Green Eco Pro has received high recognition and recommendation among machinery manufacturers and metal processing industries.

Your Best Choice

The independent R&D team took the lead in acquiring several patents. The products are sold around the world, including Europe, America, Japan, Southeast Asia, and mainland China, where the MIT products have their quality proven and gained reputation.

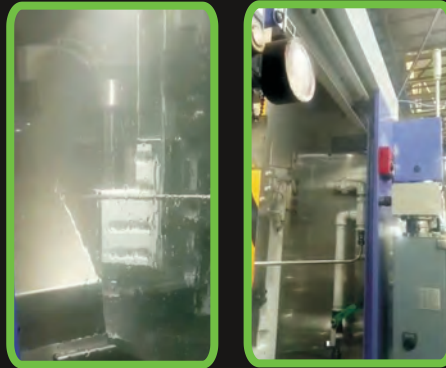
All of these achievements can be attributed to Green Eco Pro's operating principles: protect the environment, continued innovation, business trustworthiness, and sustainable development.

With its advanced technology, high-tech equipment, and professionals, Green Eco Pro provides the customers with comprehensive consultation and recommendations to improve environmental quality.





# AIR

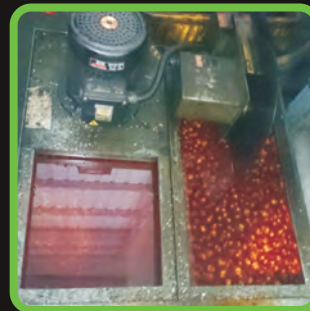
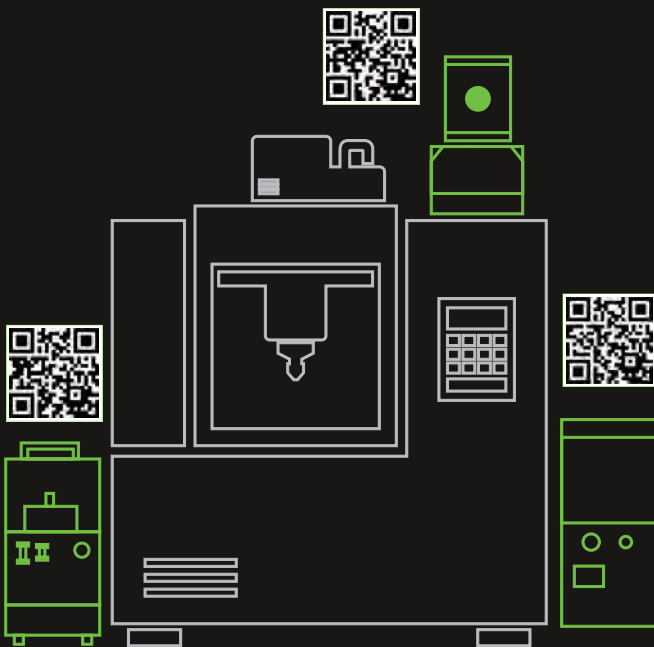


## Pollution source

- Oil mist**
- Smoke**
- Steam**
- Suspended particles**



# WATER



## Pollution source

- Leakage of oil**
- Rust preventive oil**
- Extra oil**
- Suspended material**



# WASTE



## Pollution source

- Chips**
- Sludge**



# Oil Mist Collector

GEP series



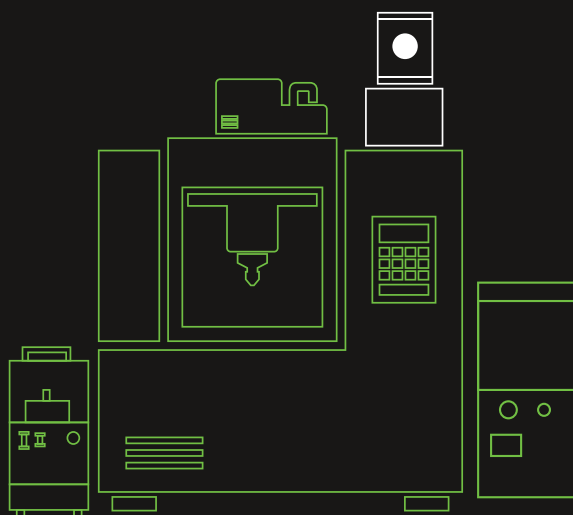
Economically S series

**GEP - 200S**

Smart alert series

**GEP - 200**

**GEP - 300**



[ Installation straight ]



[ Optional:  
Vertical lift kit field installation ]



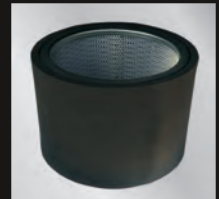
## Features

- ▶ Upright design to extend operating life of motor
- ▶ 99% oil reclaim to extend operating life of the smoke filtration cartridge
- ▶ Low vibration for higher precision machining
- ▶ Low noise for a pleasant working environment
- ▶ Install IE3 ultra-high efficient motor.

## Smart alert flagship series

### Multiple filter net

Pleated oil-proof 30% filter material  
Reusable  
Filter out 5micro particles



## Full range of oil mist Collectors

### High effectual Filter tube

Modularized high efficiency  
Air filter removes cutting  
oil smoke particles  
Intercepts 1 micro particles



## Economically efficient S series

### Triple filter cotton and element

Three layers of special filter  
materials for smoke .  
Economical filter material



## Specifications

All features, benefits and specifications are subject to change without notice

Model	GEP - 200S	GEP - 200	GEP - 300	Unit
Motor (hp)	0.4 (1/2 HP)		0.75 (1 HP)	kw (IE3)
Power Supply	220 / 380			V
Frequency	50 / 60			Hz
Current	1.7 / 1.18		2.74 / 1.76	A
Rotating Speed	2860 / 3440		2875/3455	R.P.M
Air Flow	16.5 / 18	20.5 / 25	29 / 35	M <sup>3</sup> /min
Wind speed	19	26	36	M/S
Sound Level	65		73	dB
Vibration	0.7		0.9 ~ 1	mm/s
Inhale Caliber	150 / 6			mm/inch
Net Weight	26 / 57	40 / 88	49 / 108	Kg / lb
Dimension	H 340 × Ø 380	420 × 480 × 420	500 × 570 × 490	mm
Machines Fully Cover Volume	1 ~ 4	4 ~ 5	5 ~ 7.5	M <sup>3</sup>
Features				
Filter Element	Washable/Reusable			Standard
Operate Indicator Display	X	Light (Green Eco Pro)		Standard
Filter Clogged Indication Display		Glisten (Green Eco Pro)		Standard
Vertical Lift kit	430 × 430 × 1700 mm			Optional
Modular High Efficiency -Filter Element	1µm Long-Acting Type / 600 mm			Optional





# Coolant Purification Systems

ULTRA series

Economical type

**Ultra-90**



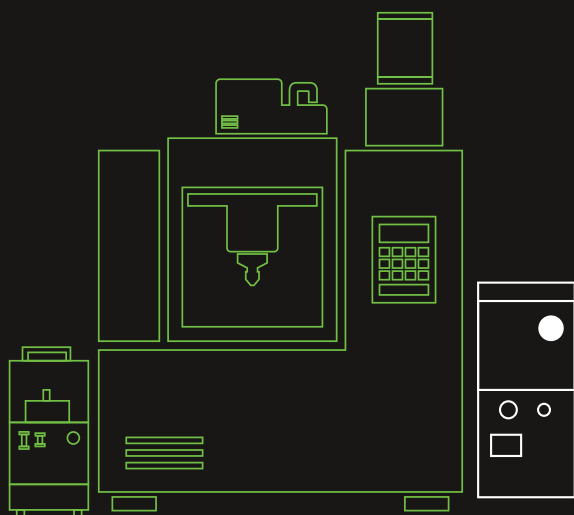
Standard type

**Ultra-360**



Central System type





**Ultra-1200**



## Features

- ▶ No electricity consumption
- ▶ No consumables
- ▶ Continuous purified operation
- ▶ Will not affect the viscosity of the coolant
- ▶ No adjustment required on the supplied float assembly inlet
- ▶ Patented design S.T.P.M module

## Benefits

Extends the coolant life up to		500%
Save cost of changing coolant		25%
Extends the tool life up to		20%
Eliminates machine down time costs up to		15%

## S.T.P.M

The S.T.P.M. module is composed of a nonlipophilic substance. It is made from a proprietary injected molded polymer. Each module consists of multiple filter screens overlapped in a unique design.

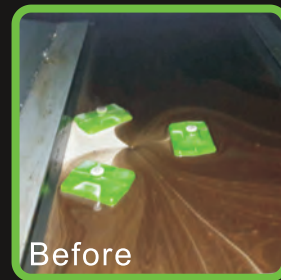


## FLOATING SKIMMER

Patented design no adjustment required on the supplied floating assembly inlet. Patented Tubes are self-balanced



## Example of a successful field



## Specifications

All features, benefits and specifications are subject to change without notice.

Model	Ultra - 90	Ultra - 360	Ultra - 1200	Unit
Dimension	470 × 310 × 430	500 × 218 × 715	710 × 430 × 880	mm
Max coolant flow volume	90	360	1200	L / h
Max coolant process volume	10	14	70	L
Net weight	25/55	28/61	98/216	Kg / lb
Internal oil recycle reservoir	X	2	4.5	L
Filter indicator	X	V	V	
Incoming air pressure	2.5 / 35		3 / 50	Kg / psi



# Chip Vacuum System

FC series

Precision filtration system

**FCG-105**



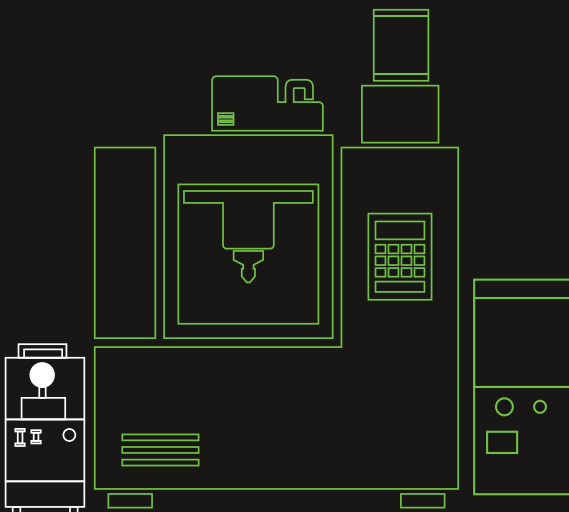
Automatic filtration system

**FCG-105Auto**



Chip Vacuum system

**FC-180**  
**FC-180 Plus**  
**FC-380**







## Precision filtration

FCG-105



FCG-105Auto



## Features

Filter out particles as small as 5micro particles and flow rate up to 110LPM. Efficient filter materials with high saturation capacity.

Applications:

Electric discharge machining, full oil processing, grinding, etc. Effective interception of fine impurities for high precision processing.

## Chip vacuum system



Aluminum chips



Sludge-Aluminum



Graphite



Fine Aluminum Chips & Bio membrane Mixed



Steel Chips

## Specifications

Model	FCG-105	FCG-105Auto	Unit	Model	FC-180	FC-180 plus	FC-380	Unit
Dimension	730 x 385 x 720	800 x 800 x 970	mm	Dimension	810 x 370 x 750	810 x 370 x 750	990 x 430 x 750	mm
Power supply	110	110/220	V	Net weight	56 / 123	58 / 127	71 / 156	Kg / lb
Submerged pump	1/2 hp	1/2 hp	Customized pump from Japan	Filter bucket capacity	7	17	17	L
Precision filter tube	Under 5 $\mu$ m	Under 5 $\mu$ m	$\mu$ m	Air pressure requirement	5	5	5	BAR
Alarm lamp	V	V		Max negative pressure	55	55	69	Kg / m <sup>3</sup>
Water pump	X	V		Max coolant flow	180	180	380	L / Min
Pressurized motor	X	V		Suggest air supply caliber	380 (180/830 optional)			$\mu$ m
Control panel	X	V		Suggest air supply caliber	3/8	3/8	1/2	Inch



## Customized plan



### AIR

Integration of air  
pollution system

Planning of semi-customized and  
fully-customized piping for central  
processing to meet the emission  
standards



### WATER

Integration of waste  
cutting fluid system

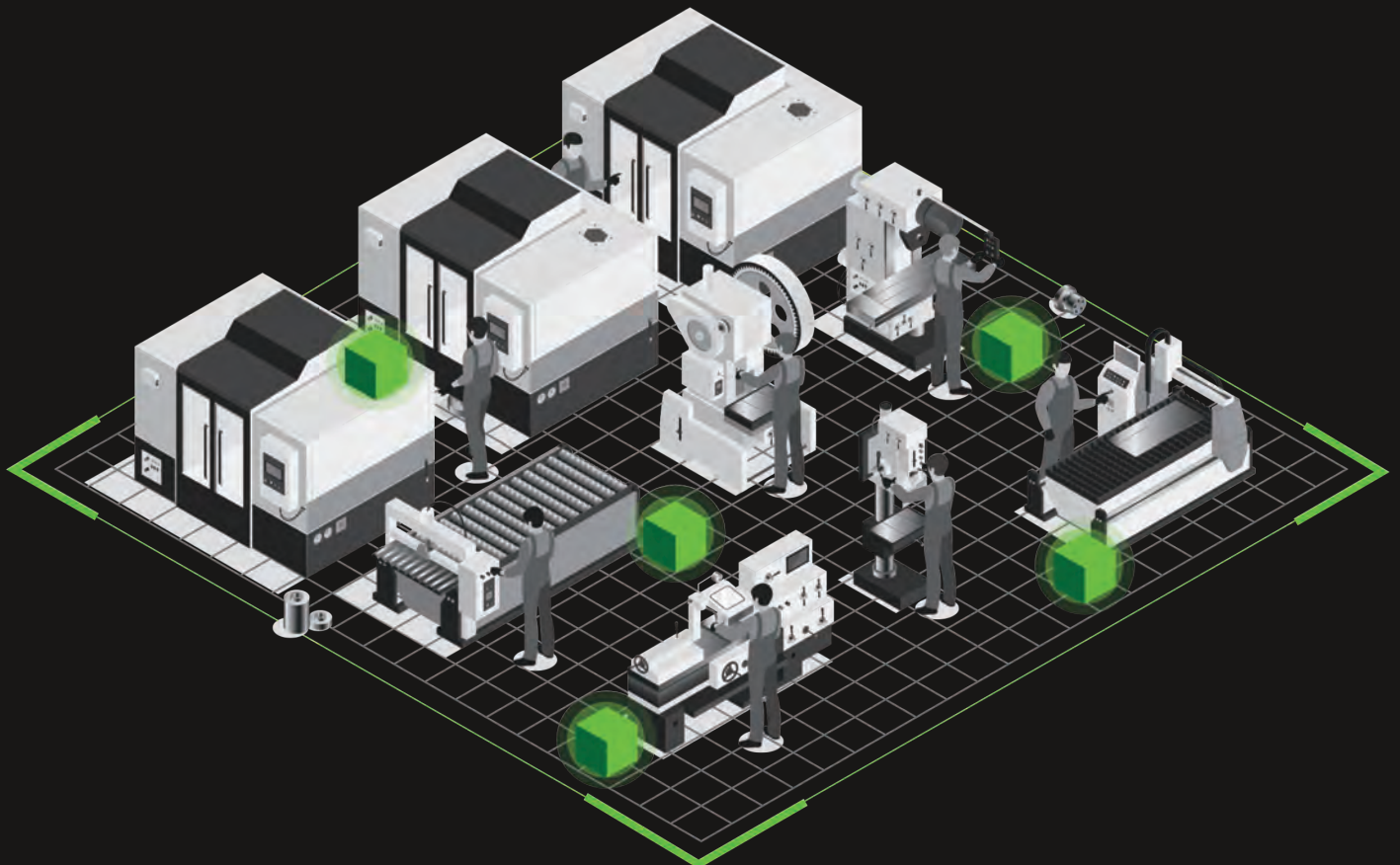
Integrated planning of customized  
site reclaim system to meet the  
emission standards



### WASTE

Waste  
integration system

Effective planning of automatic  
drainage and waste reduction  
for the maximum benefit of  
plant-wide automation





## Our Valued Customer's Customers



## Certification Award





PREVENTING POLLUTION OF MACHINE TOOL EQUIPMENT MAKER

KEEP CLEAN, GO **Green**

Green Eco Pro Technology above industry



## Green Eco Pro Co., LTD

- Taiwan

Office: +886-4-25359633

F A X: +886-4-25359522

Email: [service@rwwa.com.tw](mailto:service@rwwa.com.tw)

No.12-19, Ln. 183, Sec. 4, Chongde Rd.,  
Tanzi Dist., Taichung City 427, Taiwan

- North America

Office / Cell : 714-853-2991

2970 S Via Belamaria, Ontario, CA 91762

Email: [greenecoprousa@gmail.com](mailto:greenecoprousa@gmail.com)

AGENT<sub>1</sub>  
2020.02