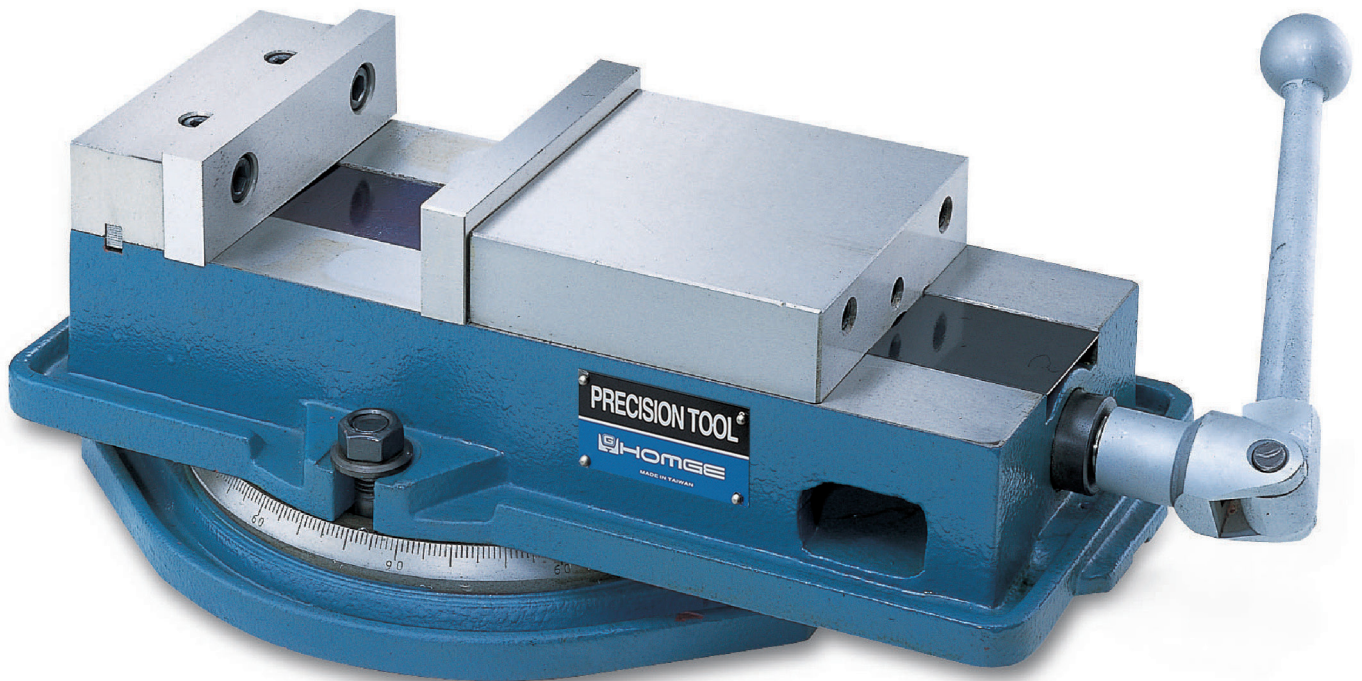


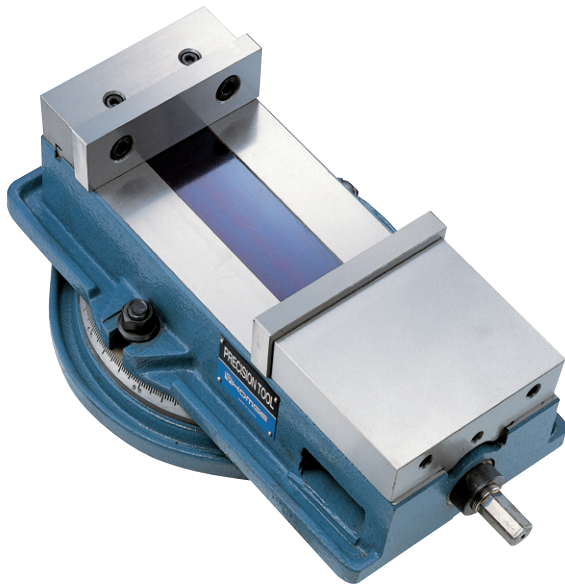
**PRECISION ANGLE LOCK
MACHINE VISE**

Model: HAV-4", 5", 6", 8", 12"

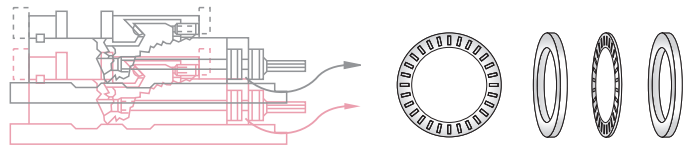
**PRECISION ANGLE LOCK
MACHINE VISE**

Model: 6" SUPER-OPEN 8"

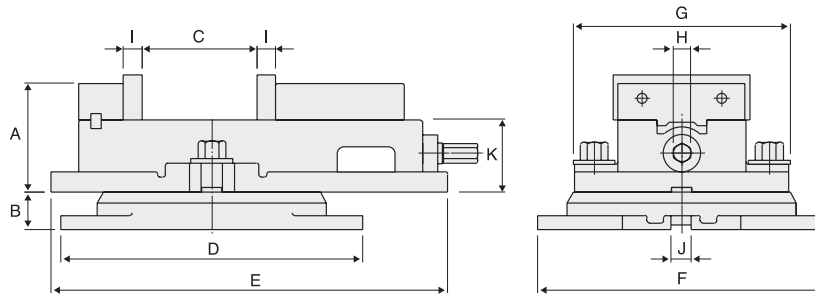
FEATURES



- 1.** Two set screws in the Fixed-Jaw ensure that it does not tilt backwards when a very high clamping force is applied.
- 2.** Iron Leadscrew Cover protects Leadscrew from swarf.
- 3.** Both sides of Slideways are HEAT TREATED .
- 4.** ANGLE LOCK MECHANISM creates downward pressure on Jaw ensuring both jaws are parallel during clamping.
- 5.** Needle Bearing Thrust Collar cuts friction and increases clamping pressures 80%.



DIMENSIONS



SPECIFICATIONS

Unit: mm/inch

Model	A		B		C		D		E		F		G		H		I		J		K		Weight (kg)	
	mm	inch	mm	inch	mm	inch	mm	inch	mm	inch	mm	inch	mm	inch	mm	inch	mm	inch	mm	inch	mm	inch		
HAV-4"	107	4 1/8	154	6 1/16	220	8 9/16	271	10 1/2	87	3 27/64	30	1 1/16	110	4 1/4	163	6 1/2	249	9 3/4	304	12	98	3 55/64	32	1 1/4
HAV-5"	138	5 1/2	201	8	304	12	368	14 1/2	110	4 1/4	40	1 1/2	198	7 3/4	264	10 3/4	402	15 13/16	476	18 3/4	136	5 27/64	55	2 3/16
HAV-8"	320	12 5/8	400	15 3/4	480	18 7/8	560	22	219	8 5/8	-	-												

SPECIFICATIONS (Material: FCD 55 Ductile Iron. Hardness: HRC 45°)

Unit: mm/inch

Model	A		B		C		D		E		F		G		H		I		J		K		Weight (kg)								
	mm	inch	mm	inch	mm	inch	mm	inch	mm	inch	mm	inch	mm	inch	mm	inch	mm	inch	mm	inch	mm	inch									
6" SUPER-OPEN 8"	190	7 1/2"	263	10 3/8"	349	13 3/4"	413	16 1/4"	114	4 1/2	42	1 5/8	198	7 3/4"	336	13 1/4"	433	17"	300	11 3/4"	238	9 3/8"	19	3/4"	18	3/4"	18	3/4"	75	2 63/64"	50