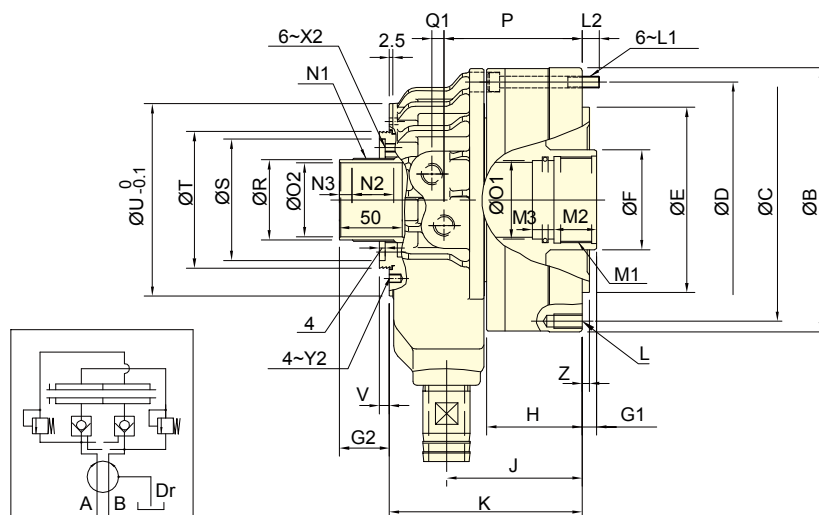
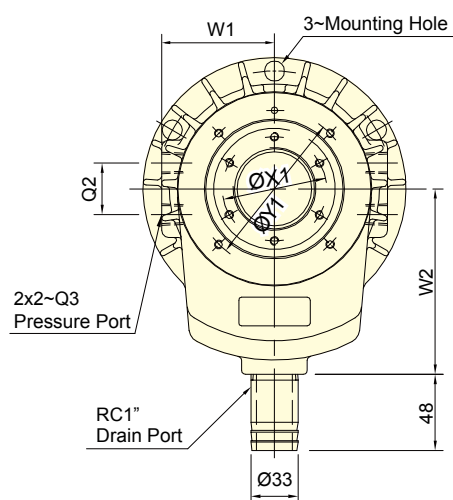




- Super short form, light weight large Through-Hole, just as 2/3 of typical model length.
- Built-in safety check valves and pressure relief valves.
- Can screw it from the rear end of the cylinder when mounting.
- Linear sensor can be attached.(optional)
- Patent numbers :  
PAT.NO.M491534(Taiwan)  
PAT.NO.ZL201420584274.5(China)



Subject to technical changes

## SPECIFICATIONS

Model	Eff. piston area		Piston stroke	Max. speed	Max. pressure	Moment of inertia	Weight	Total oil leakage
	Extend	Retract						
	cm <sup>2</sup>	cm <sup>2</sup>	mm	min <sup>-1</sup> (r.p.m.)	MPa(kgf/cm <sup>2</sup> )	kg · m <sup>2</sup>	kg	lit. / min.
<b>TK-A528</b>	73.0	69.7	12	8000	4.5 (45)	0.012	6.2	3.0
<b>TK-A533</b>	73.0	69.7	12	8000	4.5 (45)	0.012	6.0	3.0
<b>TK-C643</b>	99.1	88.0	15	7000	4.5 (45)	0.018	7.5	3.0
<b>TK-A646</b>	105.0	93.9	15	7000	4.5 (45)	0.018	7.3	3.0
<b>TK-B646</b>	105.0	93.9	15	7000	4.5 (45)	0.018	8.6	3.0
<b>TK-C646</b>	99.1	88.0	15	7000	4.5 (45)	0.018	7.5	3.0
<b>TK-B846</b>	135.3	125.0	20	6300	4.5 (45)	0.032	12.4	3.9
<b>TK-A853</b>	135.3	125.0	20	6300	4.5 (45)	0.032	11.8	3.9
<b>TK-B853</b>	135.3	125.0	20	6300	4.5(45)	0.032	11.7	3.9
<b>TK-A1068</b>	170.1	155.3	25	5500	4.5 (45)	0.065	17.4	4.2
<b>TK-A1075</b>	170.1	155.3	25	5500	4.5(45)	0.065	18.8	4.2
<b>TK-A1078</b>	170.1	155.3	25	5500	4.5 (45)	0.065	17.4	4.2

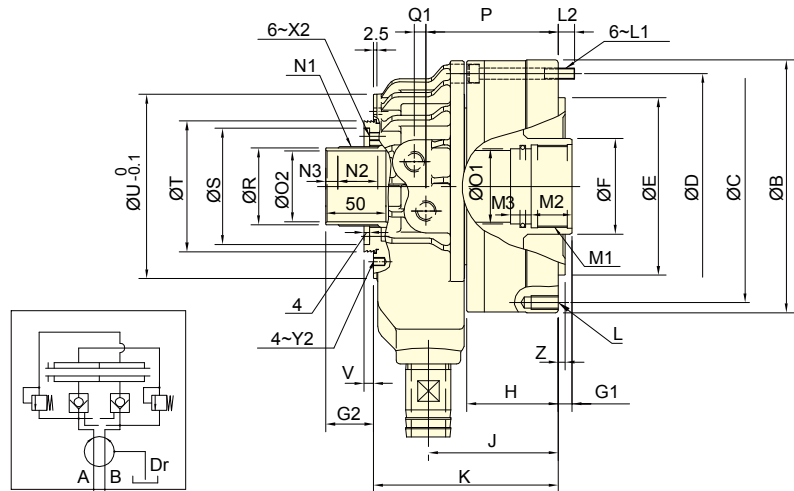
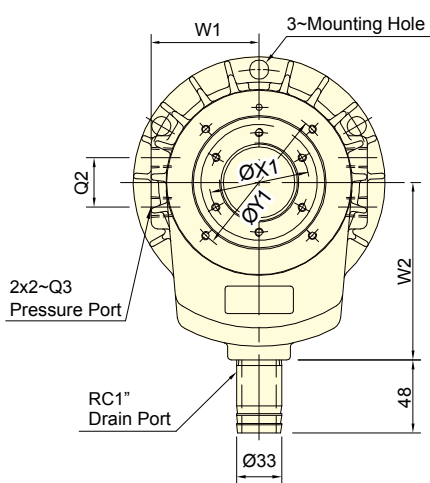
## DIMENSIONS

Model	A	B	C	D	E	F	G1		G2		H	J	K	L	L1	L2	M1	M2	M3
	I.D.				h7		max.	min.	max.	min.									
<b>TK-A528</b>	105	141	125	125	110	45	12	0	38	26	49	77.5	123	6~M8x20	M8x55	14	M38x1.5	25	13
<b>TK-A533</b>	105	141	125	125	110	45	12	0	38	26	49	77.5	123	6~M10x20	M8x55	14	M38x1.5	25	13
<b>TK-C643</b>	128	156	140	140	120	65	15	0	44	29	56	85	125	12~M10x20	M8x60	12	M50x2	25	13
<b>TK-A646</b>	128	162	147	147	130	65	15	0	44	29	56	85	125	12~M10x20	M8x60	12	M55x2	25	13
<b>TK-B646</b>	128	162	130	147	100	65	15	0	44	29	66	95	135	12~M10x20	M8x70	12	M55x2	30	15
<b>TK-C646</b>	125	156	140	140	120	65	15	0	44	29	56	85	125	12~M10x20	M8x60	12	M55x2	25	13
<b>TK-B846</b>	145	185	170	165	130	70	20	0	48	28	66	95	135	12~M10x20	M8x70	12	M55x2	30	15
<b>TK-A853</b>	145	185	170	165	140	70	20	0	48	28	66	95	135	12~M10x20	M8x70	12	M60x2	30	15
<b>TK-B853</b>	145	185	170	165	130	70	20	0	48	28	66	95	135	12~M10x20	M8x70	12	M60x2	30	15
<b>TK-A1068</b>	170	212	190	190	160	95	25	0	50	25	74	108	158	12~M10x20	M10x80	16	M75x2	35	15
<b>TK-A1075</b>	170	212	190	190	160	95	25	0	50	25	74	108	158	12~M10x20	M10x80	16	M85x2	35	15
<b>TK-A1078</b>	170	212	190	190	160	95	25	0	50	25	74	108	158	12~M10x20	M10x80	16	M87x2	35	15

Model	N1	N2	N3	O1	O2	P	Q1	Q2	Q3	R	S	T	U	V	W1	W2	X1	X2	Y1	Y2	Z
				H8	H8					g7	H7										
<b>TK-A528</b>	M39x1.5	25	8	35	28	79	8.5	30	RC1/4	37	62	70	98	6	62	110	49	M6x6	83	M5x6	5
<b>TK-A533</b>	M39x1.5	25	8	35	33	79	8.5	30	RC1/4	37	62	70	98	6	62	110	49	M6x6	83	M5x6	5
<b>TK-C643</b>	M52x1.5	29	9	45	43	87	8.5	36	RC3/8	50	76	85	116	9.5	74	120	64	M6x10	98	M5x6	5
<b>TK-A646</b>	M52x1.5	29	9	50	46	87	8.5	36	RC3/8	50	76	85	116	9.5	74	120	64	M6x10	98	M5x6	5
<b>TK-B646</b>	M52x1.5	29	9	50	46	97	8.5	36	RC3/8	50	76	85	116	9.5	74	120	64	M6x10	98	M5x6	5
<b>TK-C646</b>	M52x1.5	29	9	50	46	87	8.5	36	RC3/8	50	76	85	116	9.5	74	120	64	M6x10	98	M5x6	5
<b>TK-B846</b>	M58x1.5	30	8	50	46	97	8.5	36	RC3/8	56	85	96	128	11.5	79	130	73	M6x12	110	M6x6	5
<b>TK-A853</b>	M58x1.5	30	8	55	53	97	8.5	36	RC3/8	56	85	96	128	11.5	79	130	73	M6x12	110	M6x6	5
<b>TK-B853</b>	M58x1.5	30	8	55	53	97	8.5	36	RC3/8	56	85	96	128	11.5	79	130	73	M6x12	110	M6x6	5
<b>TK-A1068</b>	M84x2	34	9	70	68	110	12	40	RC1/2	81	108	121	164	10	98	160	98	M6x12	155	M6x8	5
<b>TK-A1075</b>	M84x2	34	9	80	75	110	12	40	RC1/2	81	108	121	164	10	98	160	98	M6x12	155	M6x8	5
<b>TK-A1078</b>	M84x2	34	9	82	78	110	12	40	RC1/2	81	108	121	164	10	98	160	98	M6x12	155	M6x8	5



- Super short form, light weight large Through-Hole, just as 2/3 of typical model length.
- Built-in safety check valves and pressure relief valves.
- Can screw it from the rear end of the cylinder when mounting.
- Linear sensor can be attached.(optional)
- Patent numbers :  
PAT.NO.M491534(Taiwan)  
PAT.NO.ZL201420584274.5(China)



Subject to technical changes

## SPECIFICATIONS

Model	Eff. piston area		Piston stroke	Max. speed	Max. pressure	Moment of inertia	Weight	Total oil leakage
	Extend	Retract						
	cm <sup>2</sup>	cm <sup>2</sup>						
TK-A1287	234.0	217.5	30	3800	4.0 (40)	0.092	24.8	4.5
TK-A1291	234.0	217.5	30	3800	4.0 (40)	0.092	24.8	4.5
TK-A1511	336.4	315.2	30	3000	3.5(35)	0.38	57.9	7.0
TK-A1512	336.4	315.2	30	3000	3.5(35)	0.38	53.8	7.0
TK-2114	373.2	336.1	35	2500	3.0 (30)	0.54	58.2	8.0

## DIMENSIONS

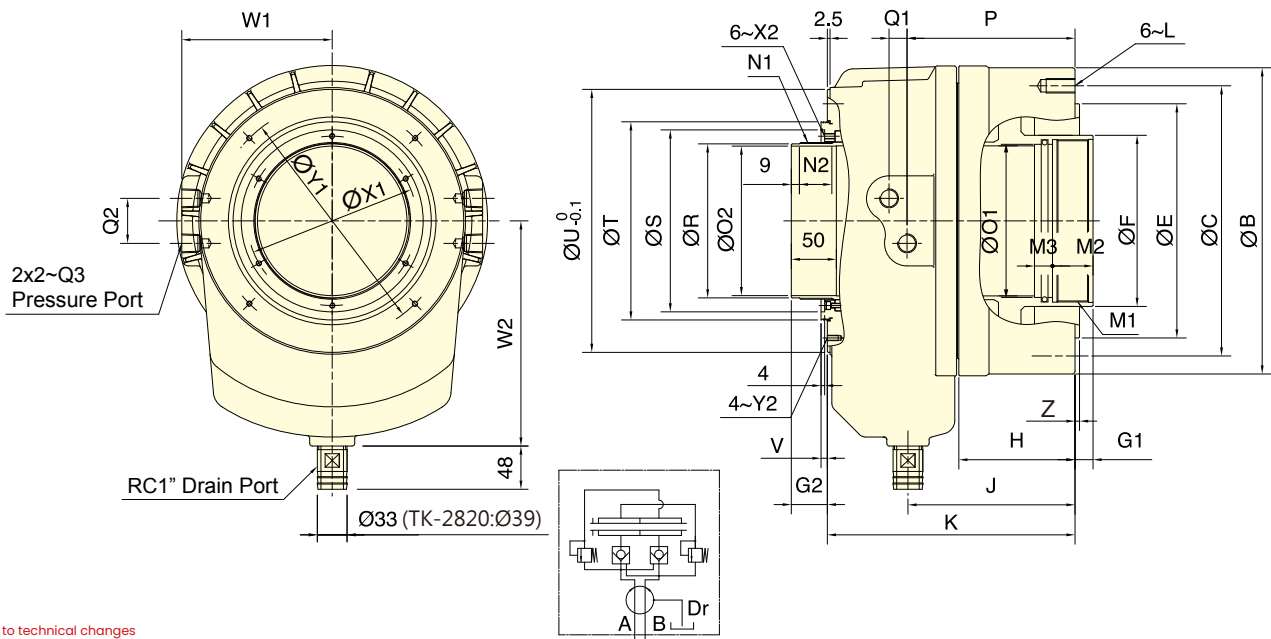
Model	A	B	C	D	E	F	G1		G2		H	J	K	L	L1	L2	M1	M2	M3	N1
	I.D.				h7		max.	min.	max.	min.										
TK-A1287	200	245	215	225	180	110	30	0	59	29	86	126	184	12~M12x24	M10x90	14.5	M95x2	35	15	M99x2
TK-A1291	200	245	215	225	180	110	30	0	59	29	86	126	184	12~M12x24	M10x90	14.5	M100x2	35	15	M99x2
TK-A1511	250	300	275	275	230	140	30	0	58	28	102	156	226	12~M16x36	M12x110	21	M120x2	45	15	M129x2
TK-A1512	250	300	275	275	230	140	30	0	58	28	102	156	226	12~M16x36	M12x110	21	M130x2	45	15	M129x2
TK-2114	265	320	295	295	240	165	35	0	60	25	115	173.5	247.5	12~M16x32	M12x120	17.5	M155x2	45	20	M149x2

Model	N2	N3	O1	O2	P	Q1	Q2	Q3	R	S	T	U	V	W1	W2	X1	X2	Y1	Y2	Z
			H8	H8					g7	H7										
TK-A1287	38	9	90	87	127.5	15	45	RC1/2	96	120	138	180	7	110	185	108	M6x10	165	M6x10	5
TK-A1291	38	9	95	91	127.5	15	45	RC1/2	96	120	138	180	7	110	185	108	M6x10	165	M6x10	5
TK-A1511	38	9	115	110	153.75	17	50	RC1/2	126	150	170	227	7	134	210	138	M6x10	210	M6x9	6
TK-A1512	38	9	125	120	153.75	17	50	RC1/2	126	150	170	227	7	134	210	138	M6x10	210	M6x9	6
TK-2114	38	9	145	140	170	17	50	RC1/2	146	170	190	250	7	145	210	160	M6x10	230	M6x10	6

\*Coolant Collector and Confirmation Device Please See Accessories pages.



- New design, short form, light weight large through-hole.
- Built-in safety check valves and pressure relief valves.
- Linear sensor can be attached.(optional)
- Patent numbers :  
PAT.NO.M491534(Taiwan)  
PAT.NO.ZL201420584274.5(China)



Subject to technical changes

### SPECIFICATIONS

Model	Eff. piston area		Piston stroke	Max. speed	Max. pressure	Moment of inertia	Weight	Total oil leakage
	Extend	Retract						
	cm <sup>2</sup>	cm <sup>2</sup>						
<b>TK-2416</b>	418.4	375.4	35	2000	3.0 (30)	1.12	78.0	9.0
<b>TK-2416L</b>	418.4	375.4	51	2000	3.0 (30)	1.31	79.2	9.0
<b>TK-2820</b>	526.2	472.6	51	1600	3.0 (30)	2.4	134.0	10.0

### DIMENSIONS

Model	A	B	C	E	F	G1		G2		H	J	K	L	M1	M2	M3	N1	N2
	I.D.			h7		max.	min.	max.	min.									
<b>TK-2416</b>	290	340	300	260	190	35	0	60	25	129	185.5	275	M16x32	M180x3	45	20	M174x2	38
<b>TK-2416L</b>	290	340	300	260	190	51	0	76	25	145	201.5	291	M16x32	M180x3	45	20	M174x2	52
<b>TK-2820</b>	340	395	360	320	235	51	0	76	25	152	212.5	316	M20x40	M220x3	45	20	M218x2	52

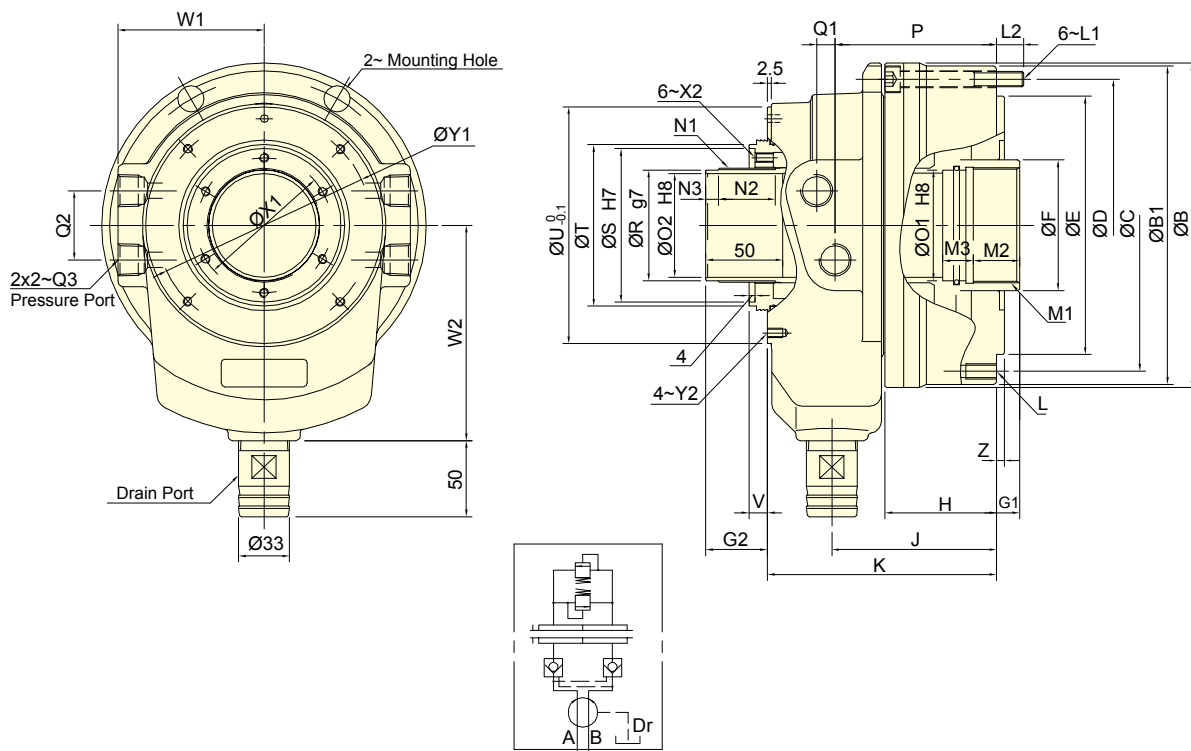
  

Model	O1	O2	P	Q1	Q2	Q3	R	S	T	U	V	W1	W2	X1	X2	Y1	Y2	Z
	H8	H8					g7	H7										
<b>TK-2416</b>	170	166	186.5	20	50	RC1/2	171	202	220	292	7	167	250	188	M6x11	260	M6x12	5
<b>TK-2416L</b>	170	166	202.5	20	50	RC1/2	171	202	220	292	7	167	250	188	M6x11	260	M6x12	6
<b>TK-2820</b>	210	205	216	21	50	RC1/2	215	262	285	360	7	202.5	300	240	M6x12	320	M6x12	6

\*Coolant Collector and Confirmation Device Please See Accessories pages.



- Bigger bore through-hole design. Super short form, light weighted.
- Built-in safety check valves and pressure relief valves.
- Front/Rear end mounting.
- Diameter of coolant collector's drain port is optional. Default : Ø33 ; optional : Ø40, Ø60.
- Linear sensor can be attached.(optional)
- Patent numbers :  
 PAT.NO.M491534(Taiwan)  
 PAT.NO.ZL201420584274.5(China)



Subject to technical changes

## SPECIFICATIONS

Model	Eff. piston area		Piston stroke	Max. speed	Max. pressure	Moment of inertia	Weight	Total oil leakage
	Extend	Retract						
	cm <sup>2</sup>	cm <sup>2</sup>	mm	min <sup>-1</sup> (r.p.m.)	MPa(kgf/cm <sup>2</sup> )	kg · m <sup>2</sup>	kg	lit. / min.
<b>TS-539</b>	72.4	67.1	15	8000	4.5(45)	0.012	6.9	3.0
<b>TS-866</b>	168.0	155.5	25	5600	4.5(45)	0.056	16.3	4.0
<b>TS-1081</b>	189.2	174.3	25	4800	4.5(45)	0.085	21.2	4.3

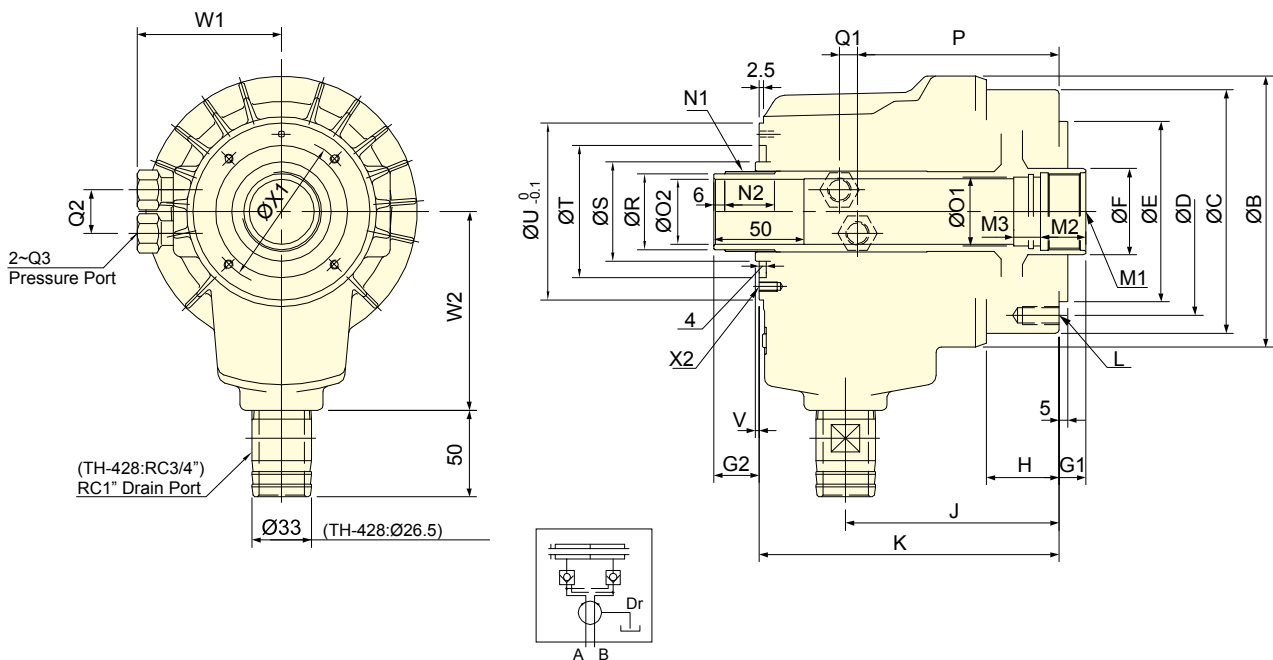
## DIMENSIONS

Model	A	B	Bl	C	D	E	F	G1		G2		H	J	K	L	L1	L2	M1	M2	M3
	I.D.	h7	max.	min.	max.	min.														
<b>TS-539</b>	107	143	141	125	125	110	52	15	0	42.5	27.5	57	91	124	6~M10x20	M8x60	12	M45x1.5	25	12
<b>TS-866</b>	165	211	207	190	190	168	85	25	0	55	30	72.5	107	149	12~M10x20	M10x80	17.5	M75x2	35	15
<b>TS-1081</b>	180	226	222	205	205	168	100	25	0	58	33	74	115	166	12~M10x20	M10x80	16	M90x2	35	15

Model	N1	N2	N3	O1	O2	P	Q1	Q2	Q3	R	S	T	U	V	W1	W2	X1	X2	Y1	Y2	Z
				(H8)	(H8)					(g7)	(H7)										
<b>TS-539</b>	M44x1.5	26	8	42	39	85	8.5	30	RC1/4	42	69	72	103	10	62.5	100	54	M6x10	90	M5x12	5
<b>TS-866</b>	M74x1.5	37	8	72	66.5	105	12	45	RC1/2	72	100	111	154	12	95	140	88	M6x12	140	M6x10	5
<b>TS-1081</b>	M89x2.0	38	9	85	81	109	15	45	RC1/2	86	113	123	175	16	103	160	103	M6x12	160	M6x10	5

\*Coolant Collector and Confirmation Device. Please See Accessories pages.

- Super high speed, light weight large Through-Hole.
- Built-in check valve which prevents the internal pressure from sudden declining so that the workpiece will not fly out and cause a serious accident.
- Linear sensor can be attached.(optional)



Subject to technical changes

## SPECIFICATIONS

Model	Eff. piston area		Piston stroke mm	Max. speed min <sup>-1</sup> (r.p.m.)	Max. pressure MPa(kgf/cm <sup>2</sup> )	Moment of inertia kg · m <sup>2</sup>	Weight kg	Total oil leakage lit. / min.
	Extend	Retract						
	cm <sup>2</sup>	cm <sup>2</sup>						
<b>TH-428</b>	53.2	50.5	10	8000	4.0(40)	0.008	5.8	3.0
<b>TH-A536</b>	69.8	67.5	15	8000	4.0(40)	0.05	8.3	3.0

## DIMENSIONS

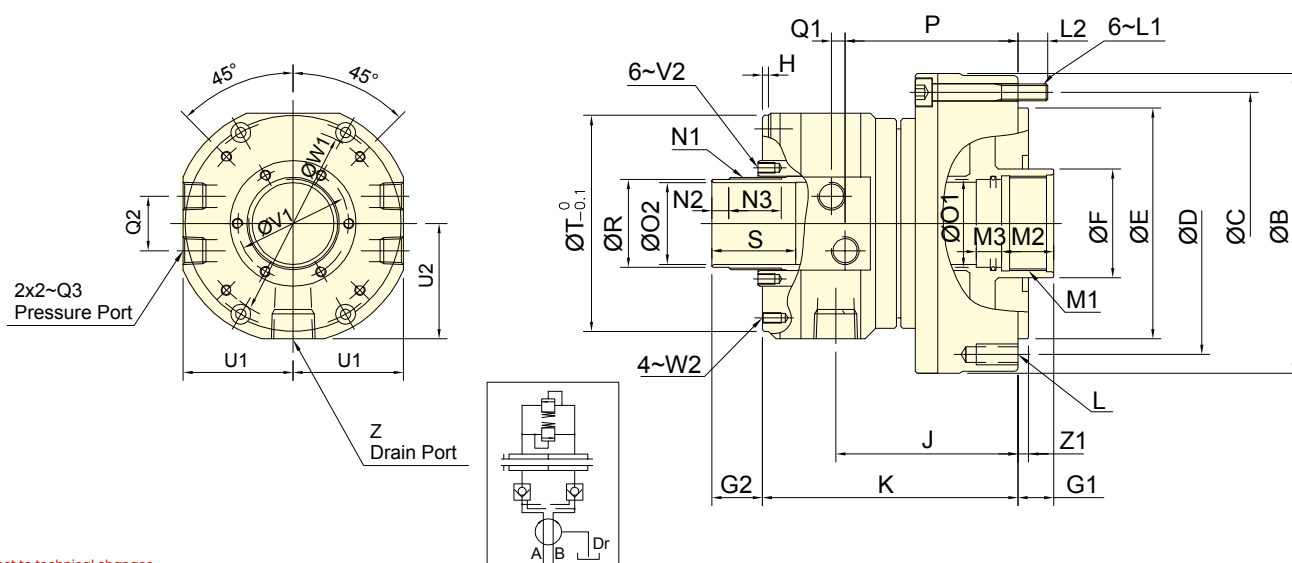
Model	A I.D.	B	C	D	E (h7)	F	G1 max.	G1 min.	G2 max.	G2 min.	H	J	K	L	M1	M2	M3
<b>TH-428</b>	90	130	120	100	80	40	10	0	35	25	45	127.5	155	6-M8x15	M33x1.5	25	12
<b>TH-A536</b>	105	150	135	115	100	48	15	0	40	25	40	118	166	6-M10x20	M42x1.5	25	15

Model	N1	N2	O1 (H8)	O2 (H8)	P	Q1	Q2	Q3	R (g7)	S	T	U	V	W1	W2	X1	X2
<b>TH-428</b>	M34x1.5	26	30	28	101.5	11	24	RC1/4	32	45	65	86	4	72	105	76	M4x7
<b>TH-A536</b>	M44x1.5	28	38	36	111.5	10	24	RC1/4	42	55	73	98	4	80	110	83	M5x10

\*Coolant Collector and Confirmation Device Please See Accessories pages.



- This is a compact, short form, light weight through-hole rotary cylinder.
- With patented build-in safety check valves and pressure relief valves.
- Large feed port and drain port, large input and keep drain smoothly.
- Can be screwed from the front end or rear end of cylinder when mounting.
- For use with vertical or horizontal spindles.
- Linear sensor can be attached.(optional)
- Patent numbers :  
PAT.NO.M491534(Taiwan)  
PAT.NO.ZL201420584274.5(China)



Subject to technical changes

### SPECIFICATIONS

Model	Eff. piston area		Piston stroke	Max. speed	Max. pressure	Moment of inertia	Weight	Total oil leakage
	Extend	Retract						
	cm <sup>2</sup>	cm <sup>2</sup>						
<b>TR-539</b>	72.4	67.1	15	8000	4.0(40)	0.010	6.8	3.0
<b>TR-646</b>	105.0	93.9	15	7000	4.0(40)	0.015	9.5	3.0
<b>TR-853</b>	135.3	125	20	6300	4.0(40)	0.032	11.5	3.9
<b>TR-1075</b>	170	155	25	4500	4.0(40)	0.065	18	4.2

### DIMENSIONS

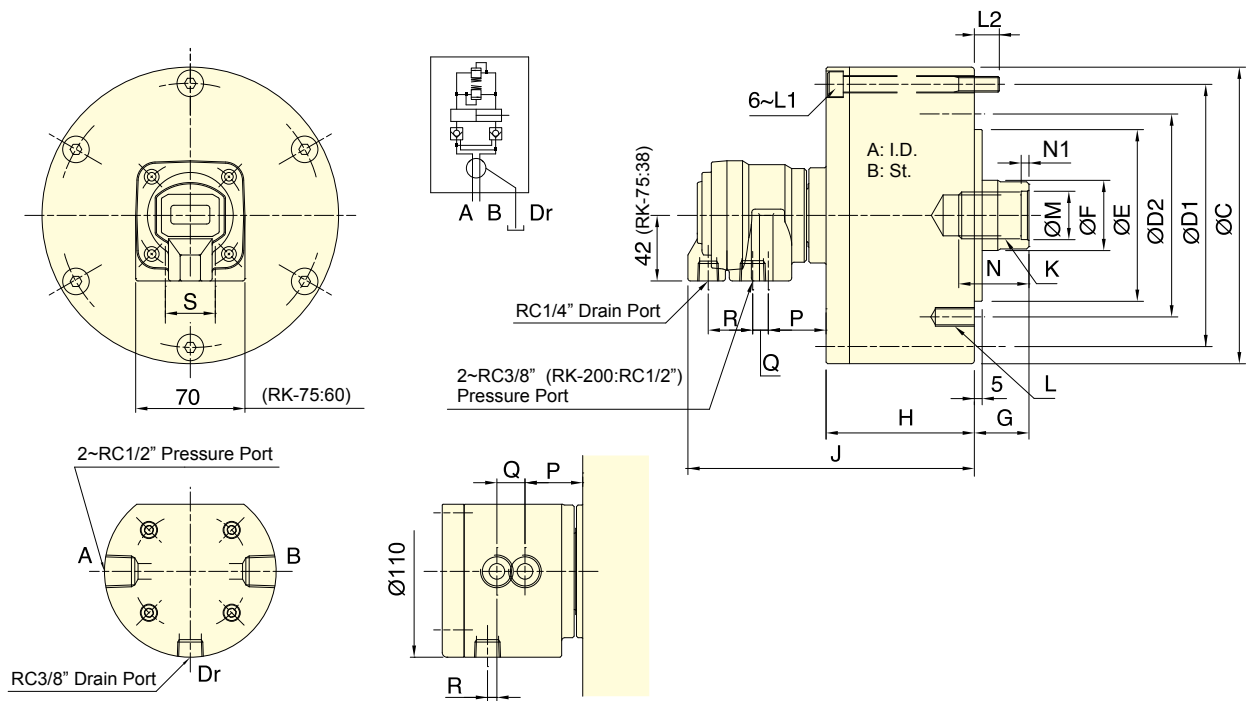
Model	A	B	C	D	E	F	G1		G2		H	J	K	L	L1	L2	M1	M2	M3
	I.D.	h7	max.	min.	max.		min.												
<b>TR-539</b>	107	143	125	125	110	52	15	0	34	19	4	97	133	6-M10x20	M8x60	12	M45x1.5	25	12
<b>TR-646</b>	128	165	147	147	130	65	15	0	34	19	3.5	97	135	12-M10x20	M8x60	11.5	M55x2	25	13
<b>TR-853</b>	145	185	165	170	130	70	20	0	47	27	4.5	118.5	160	12-M10x20	M8x75	12	M60x2	30	15
<b>TR-1075</b>	170	212	190	190	160	95	25	0	52	27	4.5	129.5	181	12-M10x20	M10x1.5	16	M85x2	35	15

Model	N1	N2	N3	O1	O2	P	Q1	Q2	Q3	R	S	T	U1	U2	V1	V2	W1	W2	Z	Z1
				H8	H8					g7										
<b>TR-539</b>	M44x1.5	8	25	42	39	92.5	6.5	26	RC 1/4	42	40	103	52.5	55	53	M5x8	90	M5x9	RC 1/2	5
<b>TR-646</b>	M52x1.5	8	25	50	46	95	5	32	RC 3/8	50	50	116	59	62	61.5	M5x9	98	M5x9	RC 1/2	5
<b>TR-853</b>	M58x1.5	8	30	55	53	114	8	34	RC 3/8	56	50	128	65	67	70	M5x10	110	M6x11	RC 1/2	5
<b>TR-1075</b>	M84x2	9	33	80	75	123.5	12	40	RC 1/2	81	50	164	83	86	95	M5x10	155	M6x11	RC 3/4	5

\*Coolant Collector and Confirmation Device Please See Accessories pages.



- For short form, light weight and high speed rotary cylinder.
- Built-in safety check valves and pressure relief valves.
- Can screw it from the rear end of the cylinder when mounting.
- The drain port should be independently connected to oil tank to avoid back pressure.


**RK-250**

Subject to technical changes

**SPECIFICATIONS**

Model	Eff. piston area		Piston stroke	Max. speed	Max. pressure	Moment of inertia	Weight
	Extend	Retract					
	cm <sup>2</sup>	cm <sup>2</sup>	mm	min <sup>-1</sup> (r.p.m.)	MPa(kgf/cm <sup>2</sup> )	kg · m <sup>2</sup>	kg
<b>RK-75</b>	44.2	37.1	15	6000	4.0 (40)	0.01	2.9
<b>RK-100</b>	78.5	71.5	20	6000	4.0 (40)	0.03	4.4
<b>RK-125</b>	122.7	113.1	25	6000	4.0 (40)	0.05	6.9
<b>RK-150</b>	176.7	160.8	30	5500	4.0 (40)	0.09	9.5
<b>RK-200</b>	314.1	290.4	35	5500	4.0 (40)	0.28	15.4
<b>RK-250</b>	469.1	436.0	60	2000	5.0(50)	0.40	45.2

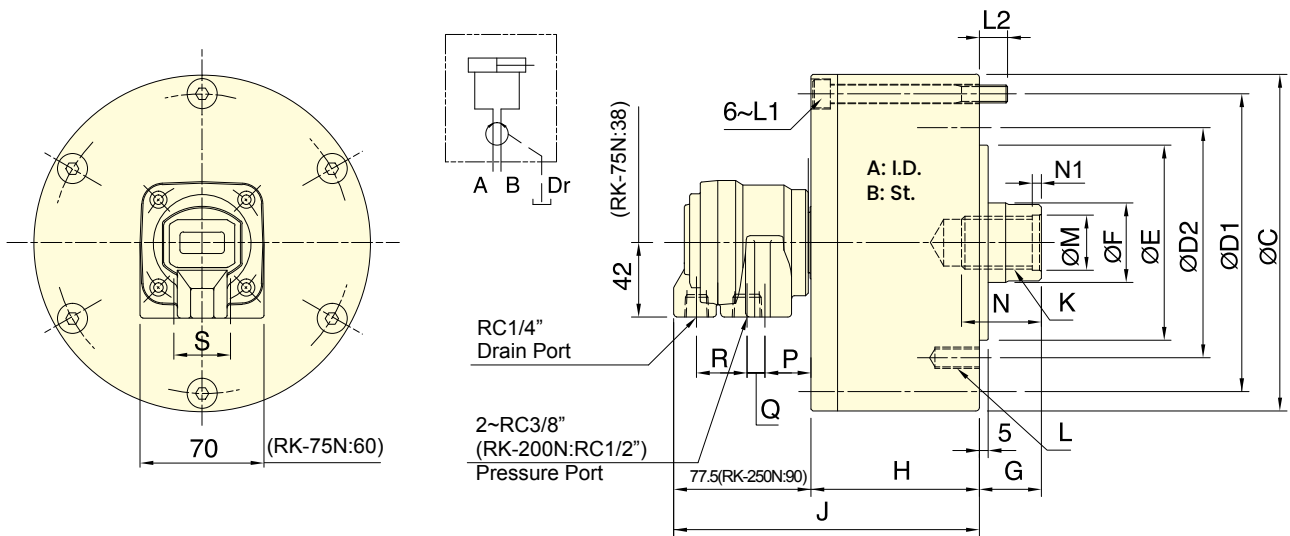
**DIMENSIONS**

Model	A	B	C	D1	D2	E (h7)	F	G max.	G min.	H	J	K	L	L1	L2	M (H8)	N	N1	P	Q	R	S
<b>RK-75</b>	75	15	107	90	90	65	30	45	30	57	148	M20x2.5	6-M8x16	M8x60	12	21	35	5	41.5	10	27.5	26
<b>RK-100</b>	100	20	132	115	100	80	30	45	25	72	163	M20x2.5	6-M10x20	M8x75	12	21	35	5	39.5	10	28.5	32
<b>RK-125</b>	125	25	160	140	130	110	35	50	25	82	172	M24x3.0	6-M12x20	M8x85	12	25	45	5	38.5	10	28.5	32
<b>RK-150</b>	150	30	190	170	130	110	45	55	25	95	184	M30x3.5	12-M12x24	M10x100	16	32	45	5	37	10	28.5	32
<b>RK-200</b>	200	35	245	220	145	120	55	70	35	115	201	M36x4.0	12-M16x30	M10x125	21	38	60	5	38	6	28.5	28
<b>RK-250</b>	245	60	307	275	220	160	65	85	25	165	255	M42x3.0	12-M20x35	M16x175	28	45	65	12	33	18	6	-





- For short form, light weight and high speed rotary cylinder.
- Can screw it from the rear end of the cylinder when mounting.
- The drain port should be independently connected to oil tank to avoid back pressure.



Subject to technical changes

## SPECIFICATIONS

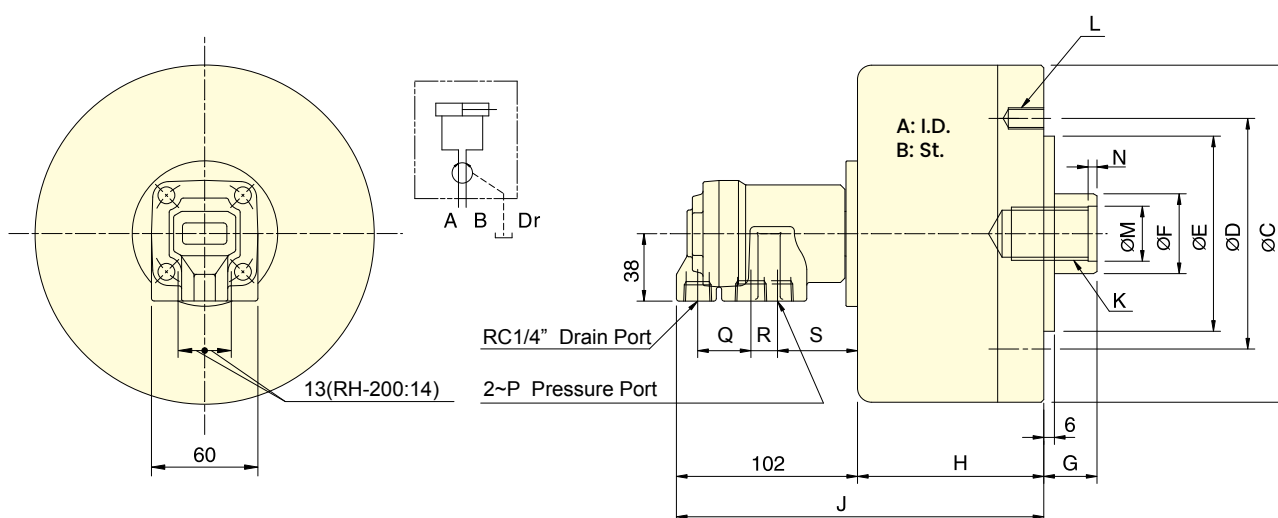
Model	Eff. piston area		Piston stroke	Max. speed	Max. pressure	Moment of inertia	Weight
	Extend	Retract					
	cm <sup>2</sup>	cm <sup>2</sup>					
<b>RK-75N</b>	44.2	37.1	15	6000	4.0(40)	0.01	2.8
<b>RK-100N</b>	78.5	71.5	20	6000	4.0(40)	0.03	4.3
<b>RK-125N</b>	122.7	113.1	25	6000	4.0(40)	0.05	6.8
<b>RK-150N</b>	176.7	160.8	30	5500	4.0(40)	0.09	9.4
<b>RK-200N</b>	314.1	290.4	35	5500	4.0(40)	0.28	15.3
<b>RK-250N</b>	469.1	436.0	60	2000	5.0(50)	0.40	45.2

## DIMENSIONS

Model	A	B	C	D1	D2	E (h7)	F	G max.	G min.	H	J	K	L	L1	L2	M (H8)	N	N1	P	Q	R	S
<b>RK-75N</b>	75	15	107	90	90	65	30	45	30	57	134.5	M20x2.5	6~M8x16	M8x60	12	21	35	5	28	10	27.5	26
<b>RK-100N</b>	100	20	132	115	100	80	30	45	25	72	149.5	M20x2.5	6~M10x20	M8x75	12	21	35	5	26	10	28.5	32
<b>RK-125N</b>	125	25	160	140	130	110	35	50	25	82	159.5	M24x3.0	6~M12x20	M8x85	12	25	45	5	26	10	28.5	32
<b>RK-150N</b>	150	30	190	170	130	110	45	55	25	95	172.5	M30x3.5	12~M12x24	M10x100	16	32	45	5	26	10	28.5	32
<b>RK-200N</b>	200	35	245	220	145	120	55	70	35	115	192.5	M36x4.0	12~M16x30	M10x125	21	38	60	5	30	6	28.5	28
<b>RK-250N</b>	245	60	307	275	220	160	65	85	25	165	255	M42x3.0	6~M20x2.5	M16x175	28	45	65	12	37	18	6	-



- The rotary valve and cylinder body, all made of special light alloy, light-weight.
- Through unique design, the rotary valve enables the inside bearing to get sufficient lubricating and cooling and endure high-speed rotary for longer service life.
- The drain port should be independently connected to oil tank to avoid back pressure.



Subject to technical changes

## SPECIFICATIONS

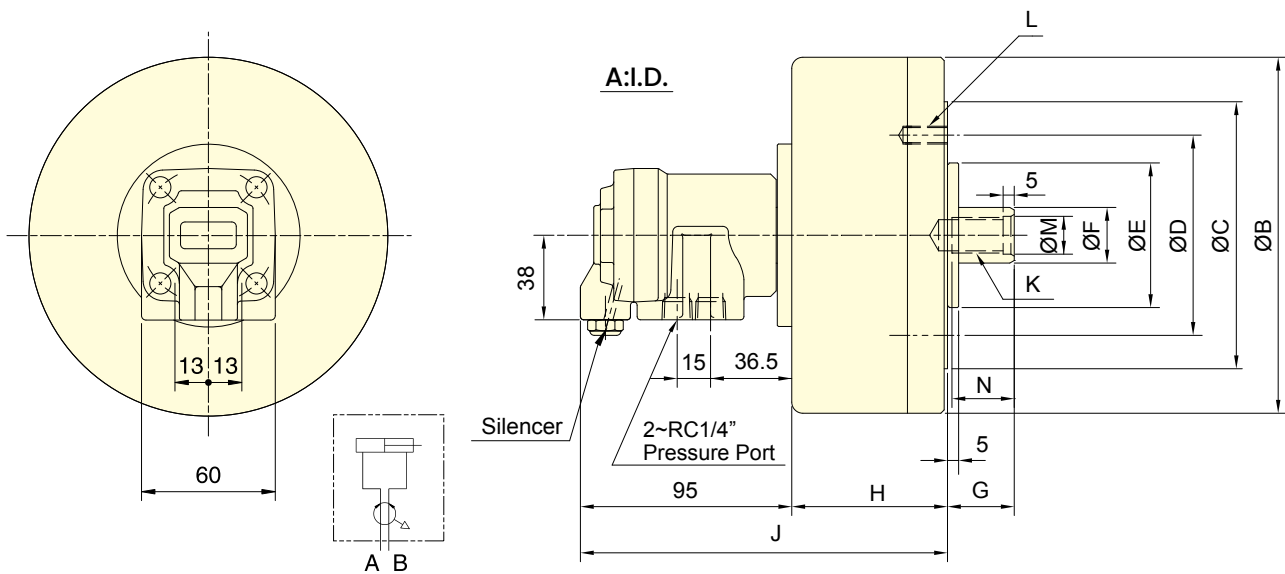
Model	Eff. piston area		Piston stroke	Max. speed	Max. pressure	Moment of inertia	Weight
	Extend	Retract					
	cm <sup>2</sup>	cm <sup>2</sup>					
<b>RH-65</b>	31.0	27.9	15	6000	3.5(35)	0.01	2.9
<b>RH-80</b>	47.7	42.8	15	6000	3.5(35)	0.01	3.4
<b>RH-100</b>	75.4	70.5	20	5500	3.5(35)	0.04	4.9
<b>RH-125</b>	119.6	112.5	25	5500	3.5(35)	0.08	6.8
<b>RH-200</b>	310.0	286.3	35	4000	4.0(40)	0.38	20.4

## DIMENSIONS

Model	A	B	C	D	E (h7)	F	G max.	G min.	H	J	K	L	M (H8)	N	P	Q	R	S
<b>RH-65</b>	65	15	98	80	60	22	45	30	73	175	M12x1.75x30	6~M8x16	14	4	RC3/8	30	15	45
<b>RH-80</b>	80	15	112	90	65	25	45	30	74	176	M16x2.0x30	6~M8x16	17	4	RC3/8	30	15	45
<b>RH-100</b>	100	20	135	100	80	25	45	25	88.5	190.5	M16x2.0x30	6~M10x20	17	4	RC3/8	30	15	45
<b>RH-125</b>	125	25	160	130	110	30	50	25	95.5	197.5	M20x2.5x35	6~M12x20	21	4	RC3/8	30	15	45
<b>RH-200</b>	200	35	245	145	120	55	70	35	130	232	M36x4	12~M16x30	38	5	RC1/2	31	16	43



- The rotary valve and cylinder body, all made of special light alloy, are light-weight.
- Through unique design, the rotary valve can considerably reduce the waste in compressing air and efficiently increase its utilization.
- When used, a little oil mist should be contained.



Subject to technical changes

## SPECIFICATIONS

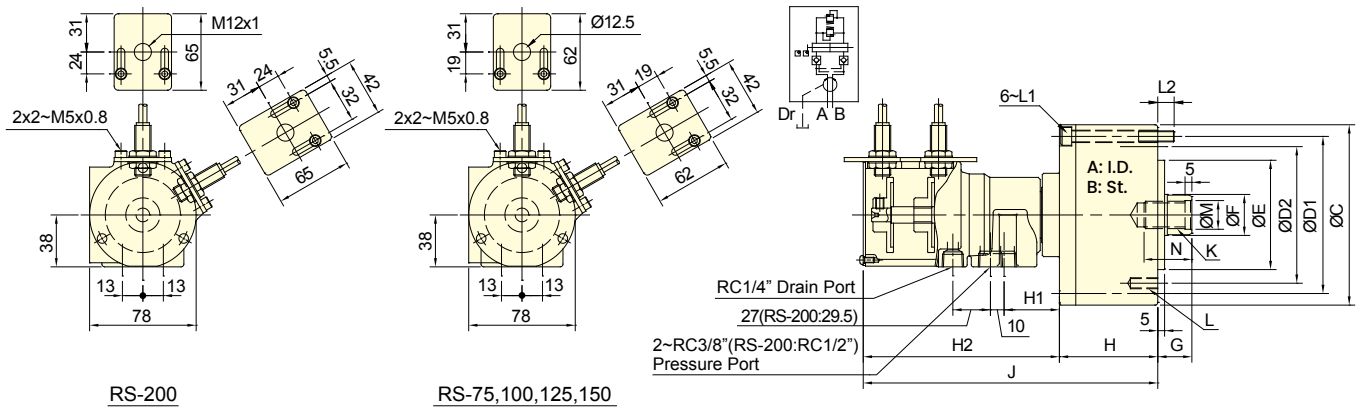
Model	Eff. piston area		Piston stroke mm	Max. speed min <sup>-1</sup> (r.p.m.)	Max. pressure MPa(kgf/cm <sup>2</sup> )	Moment of inertia kg · m <sup>2</sup>	Weight kg	Air Leakage( 6kgf/ cm <sup>2</sup> ) cc/sec
	Extend cm <sup>2</sup>	Retract cm <sup>2</sup>						
<b>RA-100</b>	77.0	74.4	15	6000	0.8(8)	0.03	3.9	400
<b>RA-130</b>	131.2	124.7	15	5000	0.8(8)	0.05	5.2	400
<b>RA-170</b>	225.4	219.0	20	5000	0.8(8)	0.18	8.5	400
<b>RA-220</b>	378.6	369.3	25	4000	0.8(8)	0.36	14.5	400
<b>RA-270</b>	571.0	562.9	30	3000	0.8(8)	0.75	18.4	400

## DIMENSIONS

Model	A	B	C	D	E (h7)	F	G max.	G min.	H	J	K	L	M (H8)	N
<b>RA-100</b>	100	130	-	80	60	22	50	35	65	160	M12x1.75	6-M8x16	13	25
<b>RA-130</b>	130	160	120	90	65	25	45	30	70	165	M16x2.0	6-M8x16	17	30
<b>RA-170</b>	170	200	140	100	80	25	45	25	85	180	M16x2.0	6-M10x18	17	30
<b>RA-220</b>	220	255	170	130	110	30	50	25	91	186	M20x2.5	6-M12x20	21	35
<b>RA-270</b>	270	305	190	130	110	35	55	25	105	200	M24x3.0	6-M12x20	25	40



- For short form, high speed and stroke control.
- With proximity sensor, the movement of the position is easy to adjust and confirm when operating.
- Built-in safety check valves and pressure relief valves.
- Can screw it from the rear end of the cylinder when mounting.
- The drain port should be independently connected to oil tank to avoid back pressure.
- Stroke Detection Type can be customized to Linear Positioning System.



Subject to technical changes

## SPECIFICATIONS

Model	Eff. piston area		Piston stroke mm	Max. speed min <sup>-1</sup> (r.p.m.)	Max. pressure MPa(kgf/cm <sup>2</sup> )	I Moment of inertia kg · m <sup>2</sup>	Weight kg
	Extend cm <sup>2</sup>	Retract cm <sup>2</sup>					
<b>RS-75</b>	43.0	37.1	15	6000	4.0 (40)	0.01	3.4
<b>RS-100</b>	77.4	71.5	20	6000	4.0 (40)	0.04	4.9
<b>RS-125</b>	121.6	113.1	25	6000	4.0 (40)	0.05	7.4
<b>RS-150</b>	175.6	160.8	30	5500	4.0 (40)	0.10	10.7
<b>RS-200</b>	313.0	290.4	35	5500	4.0 (40)	0.29	15.9

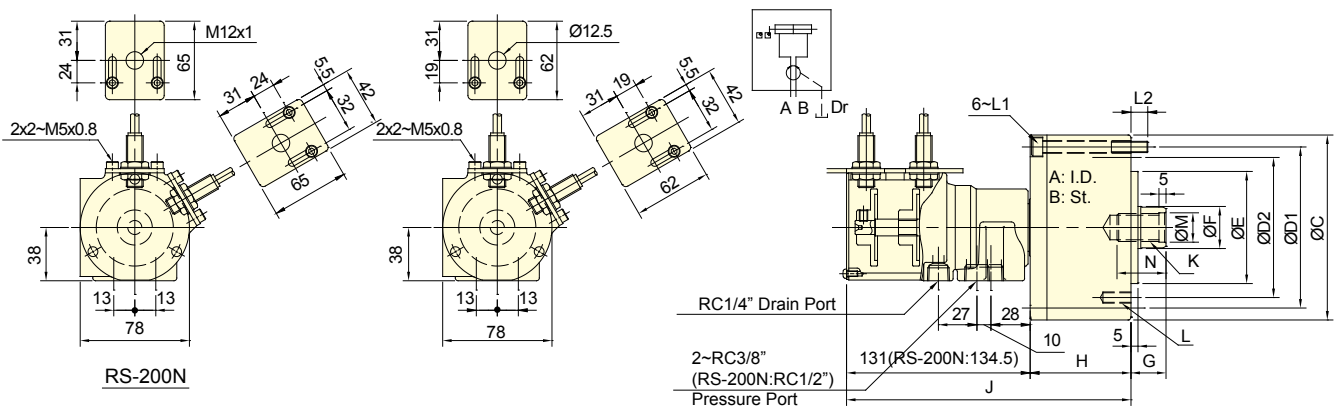
## DIMENSIONS

Model	A	B	C	D1	D2	E (h7)	F	G max.	G min.	H	H1	H2	J	K	L	L1	L2	M (H8)	N
<b>RS-75</b>	75	15	107	90	90	65	30	45	30	57	42	145	202	M20x2.5	6~M8x16	M8x60	12	21	35
<b>RS-100</b>	100	20	132	115	100	80	30	45	25	72	42	145	217	M20x2.5	6~M10x20	M8x75	12	21	35
<b>RS-125</b>	125	25	160	140	130	110	35	50	25	82	41	144	226	M24x3.0	6~M12x20	M8x85	12	25	45
<b>RS-150</b>	150	30	190	170	130	110	45	55	25	95	39	142	237	M30x3.5	12~M12x24	M10x100	16	32	45
<b>RS-200</b>	200	35	245	220	145	120	55	70	35	115	34	142.5	257.5	M36x4.0	12~M16x30	M10x125	21	38	60

\*Proximity sensor : DC 10-30V 100mA NPN.



- For short form, high speed and stroke control.
- With proximity sensor, the movement of the position is easy to adjust and confirm when operating.
- Can screw it from the rear end of the cylinder when mounting.
- The drain port should be independently connected to oil tank to avoid back pressure.
- Stroke Detection Type can be customized to Linear Positioning System.



Subject to technical changes

## SPECIFICATIONS

Model	Eff. piston area		Piston stroke mm	Max. speed min <sup>-1</sup> (r.p.m.)	Max. pressure MPa(kgf/cm <sup>2</sup> )	I		Weight kg
	Extend	Retract				Moment of inertia		
	cm <sup>2</sup>	cm <sup>2</sup>				kg · m <sup>2</sup>		
<b>RS-6520N</b>	32.0	28.3	20	6000	4.0(40)	0.01		3.2
<b>RS-6530N</b>	32.0	28.3	30	6000	4.0(40)	0.01		3.3
<b>RS-75N</b>	43.0	37.1	15	6000	4.0(40)	0.01		3.3
<b>RS-7530N</b>	43.0	37.1	30	6000	4.0(40)	0.013		3.7
<b>RS-100N</b>	77.4	71.5	20	6000	4.0(40)	0.04		4.8
<b>RS-125N</b>	121.6	113.1	25	6000	4.0(40)	0.05		7.3
<b>RS-150N</b>	175.6	160.8	30	5500	4.0(40)	0.16		10.6
<b>RS-200N</b>	313.0	290.4	35	5500	4.0(40)	0.29		15.9

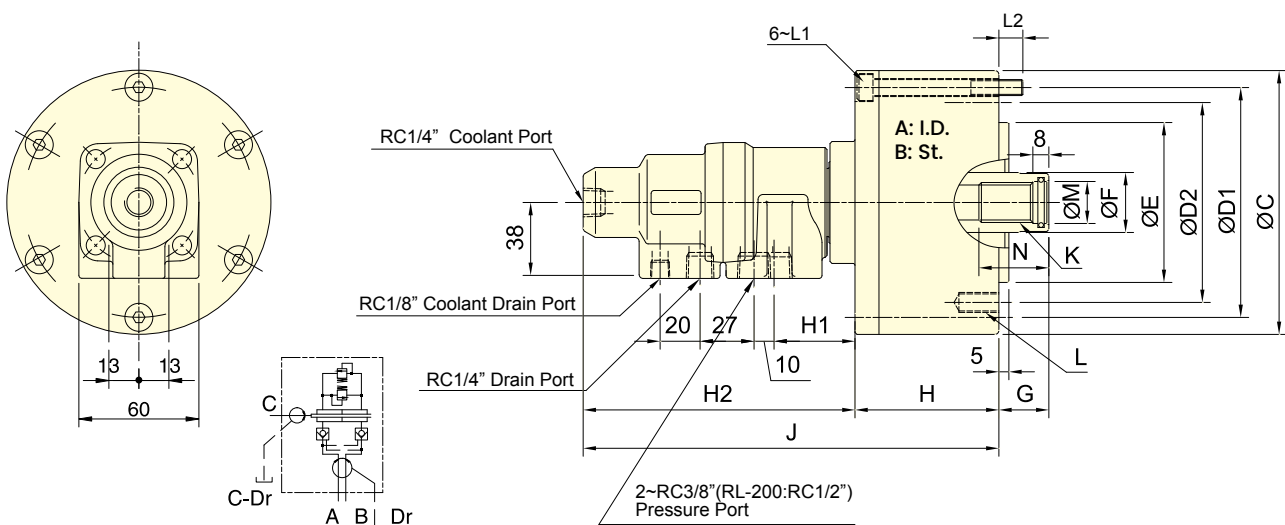
## DIMENSIONS

Model	A	B	C	D1	D2	E (h7)	F	G max.	G min.	H	J	K	L	L1	L2	M (H8)	N
<b>RS-6520N</b>	65	20	97	80	80	60	25	45	25	62	193	M16x2.0	6~M8x16	M6x70	14.5	17	30
<b>RS-6530N</b>	65	30	97	80	80	60	25	45	15	62	203	M16x2.0	6~M8x16	M6x80	14.5	17	30
<b>RS-75N</b>	75	15	107	90	90	65	30	45	30	57	188	M20x2.5	6~M8x16	M8x60	12	21	35
<b>RS-7530N</b>	75	30	107	90	90	65	30	45	15	72	203	M20x2.5	6~M8x16	M8x75	12	21	35
<b>RS-100N</b>	100	20	132	115	100	80	30	45	25	72	203	M20x2.5	6~M10x20	M8x75	12	21	35
<b>RS-125N</b>	125	25	160	140	130	110	35	50	25	82	213	M24x3.0	6~M12x20	M8x85	12	25	45
<b>RS-150N</b>	150	30	190	170	130	110	45	55	25	95	226	M30x3.5	12~M12x24	M10x100	16	32	45
<b>RS-200N</b>	200	35	245	220	145	120	55	75	35	115	249.5	M36x4.0	12~M16x30	M10x125	21	38	60

\*Proximity sensor : DC 10~30V 100mA NPN.



- To allow coolant to be feed from the rear end of the distributor through the rotating union
- Built-in safety check valves and pressure relief valves.
- The drain port should be independently connected to oil tank to avoid back pressure.
- The rotary cylinder should not run without liquid through coolant port.



PV Limit value 14400 MPa · r/m

Subject to technical changes

## SPECIFICATIONS

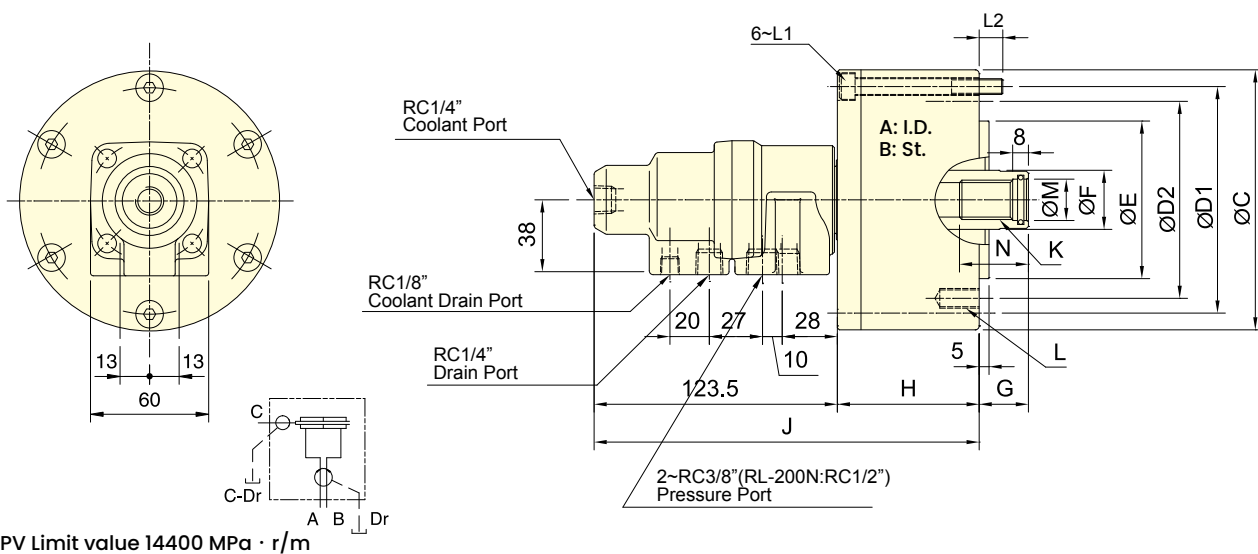
Model	Eff. piston area		Piston stroke mm	Max. speed min <sup>-1</sup> (r.p.m.)	Max. pressure MPa(kgf/cm <sup>2</sup> )	Coolant connection Max. pressure MPa (kgf/cm <sup>2</sup> )	I		Weight kg
	Extend	Retract					Moment of inertia	kg · m <sup>2</sup>	
	cm <sup>2</sup>	cm <sup>2</sup>							
<b>RL-75</b>	42.6	37.1	15	6000	4.0(40)	3.5(35)	0.01	3.1	
<b>RL-100</b>	77.0	71.5	20	6000	4.0(40)	3.5(35)	0.04	4.6	
<b>RL-125</b>	121.2	113.1	25	6000	4.0(40)	3.5(35)	0.06	7.1	
<b>RL-150</b>	175.2	160.8	30	5500	4.0(40)	3.5(35)	0.10	9.7	
<b>RL-200</b>	312.5	290.4	35	5500	4.0(40)	3.5(35)	0.30	15.6	

## DIMENSIONS

Model	A	B	C	D1	D2	E (h7)	F	G max.	G min.	H	H1	H2	J	K	L	L1	L2	M (H8)	N
<b>RL-75</b>	75	15	107	90	90	65	30	45	30	57	42	137	194	M20x2.5	6~M8x16	M8x60	12	21	35
<b>RL-100</b>	100	20	132	115	100	80	30	45	25	72	42	137	209	M20x2.5	6~M10x20	M8x75	12	21	35
<b>RL-125</b>	125	25	160	140	130	110	35	50	25	82	41	136	218	M24x3.0	6~M12x20	M8x85	12	25	45
<b>RL-150</b>	150	30	190	170	130	110	45	55	25	95	39	134	230	M30x3.5	12~M12x24	M10x100	16	32	45
<b>RL-200</b>	200	35	245	220	145	120	55	70	35	115	36	132	248	M36x4.0	12~M16x30	M10x125	21	38	60



- To allow coolant to be feed from the rear end of the distributor through the rotating union.
- Can screw it from the rear end of the cylinder when mounting.
- The drain port should be independently connected to oil tank to avoid back pressure.
- The rotary cylinder should not run without liquid through coolant port.



Subject to technical changes

### SPECIFICATIONS

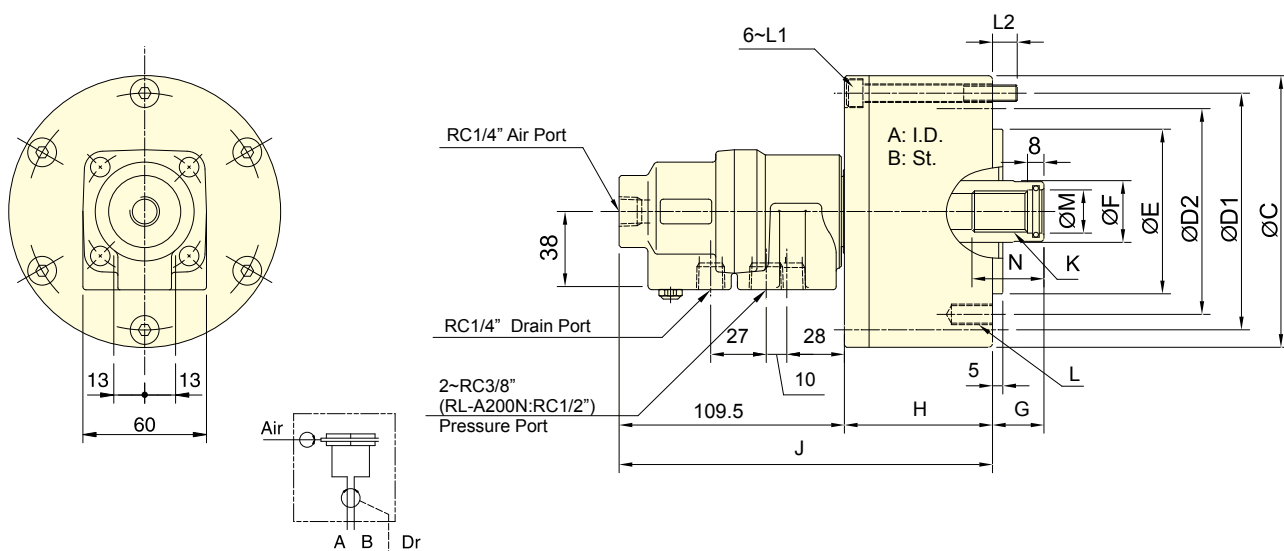
Model	Eff. piston area		Piston stroke	Max. speed	Max. pressure	Coolant connection Max. pressure	I Moment of inertia	Weight
	Extend	Retract						
	cm <sup>2</sup>	cm <sup>2</sup>	mm	min <sup>-1</sup> (r.p.m.)	MPa(kgf/cm <sup>2</sup> )	MPa (kgf/cm <sup>2</sup> )	kg · m <sup>2</sup>	kg
<b>RL-75N</b>	42.6	37.1	15	6000	4.0 (40)	3.5(35)	0.01	3.0
<b>RL-100N</b>	77.0	71.5	20	6000	4.0 (40)	3.5(35)	0.04	4.5
<b>RL-125N</b>	121.2	113.1	25	6000	4.0 (40)	3.5(35)	0.06	7.0
<b>RL-150N</b>	175.2	160.8	30	5500	4.0 (40)	3.5(35)	0.10	9.6
<b>RL-200N</b>	312.5	290.4	35	5500	4.0 (40)	3.5(35)	0.29	15.5

### DIMENSIONS

Model	A	B	C	D1	D2	E (h7)	F	G max.	G min.	H	J	K	L	L1	L2	M (H8)	N
<b>RL-75N</b>	75	15	107	90	90	65	30	45	30	57	180	M20x2.5	6-M8x16	M8x60	12	21	35
<b>RL-100N</b>	100	20	132	115	100	80	30	45	25	72	195	M20x2.5	6-M10x20	M8x75	12	21	35
<b>RL-125N</b>	125	25	160	140	130	110	35	50	25	82	205	M24x3.0	6-M12x20	M8x85	12	25	45
<b>RL-150N</b>	150	30	190	170	130	110	45	55	25	95	218	M30x3.5	12-M12x24	M10x100	16	32	45
<b>RL-200N</b>	200	35	245	220	145	120	55	70	35	115	240	M36x4.0	12-M16x 30	M10x125	21	38	60



- To allow compressed air to be feed from the rear end of the distributor through the rotating union.
- Can screw it from the rear end of the cylinder when mounting.
- When used, a little oil mist should be contained.



Subject to technical changes

## SPECIFICATIONS

Model	Eff. piston area		Piston stroke	Max. speed	Max. pressure	Air connection Max. pressure	I		Weight
	Extend	Retract					Moment of inertia	kg · m <sup>2</sup>	
	cm <sup>2</sup>	cm <sup>2</sup>							
<b>RL- A75N</b>	42.6	37.1	15	6000	4.0(40)	0.8(8)	0.01	3.0	
<b>RL- A100N</b>	77.0	71.5	20	6000	4.0(40)	0.8(8)	0.04	4.5	
<b>RL- A125N</b>	121.2	113.1	25	6000	4.0(40)	0.8(8)	0.06	7.0	
<b>RL- A150N</b>	175.2	160.8	30	5500	4.0(40)	0.8(8)	0.10	9.6	
<b>RL- A200N</b>	312.5	290.4	35	5500	4.0(40)	0.8(8)	0.29	15.5	

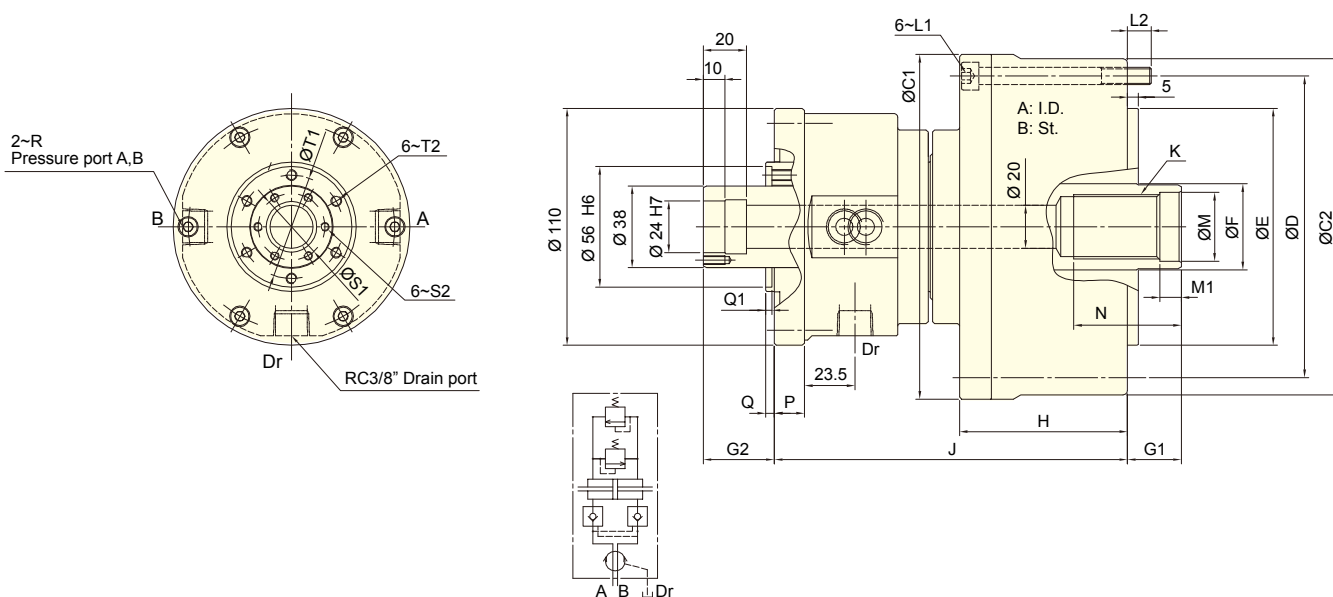
## DIMENSIONS

Model	A	B	C	D1	D2	E (h7)	F	G max.	G min.	H	J	K	L	L1	L2	M (H8)	N
<b>RL- A75N</b>	75	15	107	90	90	65	30	45	30	57	166	M20 x2.5	6~M8x16	M8x60	12	21	35
<b>RL- A100N</b>	100	20	132	115	100	80	30	45	25	72	181	M20 x2.5	6~M10x20	M8x75	12	21	35
<b>RL- A125N</b>	125	25	160	140	130	110	35	50	25	82	191	M24x 3.0	6~M12x20	M8x85	12	25	45
<b>RL- A150N</b>	150	30	190	170	130	110	45	55	25	95	204	M30x3.5	12~M12x24	M10x100	16	32	45
<b>RL- A200N</b>	200	35	245	220	145	120	55	70	35	115	225	M36 x4.0	12~M16x30	M10x125	21	38	60





- Medium and solid hydraulic cylinder with channel.
- Can choose an external rotary joint with either single or double paths.
- It meets the demand for coolant through spindle and airtight pressure detect function.
- Has a built-in check valve for safety.
- Stroke control via proximity switch or linear positioning system.
- The proximity switch and single or double paths rotating joint are optional.



Subject to technical changes

## SPECIFICATIONS

Model	Eff. piston area		Piston stroke mm	Max. speed min <sup>-1</sup> (r.p.m.)	Max. pressure MPa(kgf/cm <sup>2</sup> )	I Moment of inertia kg · m <sup>2</sup>	Weight kg
	Extend cm <sup>2</sup>	Retract cm <sup>2</sup>					
<b>RC-85</b>	43.8	48.1	20	5000	3.5(35)	0.01	6.8
<b>RC-100</b>	65.6	64.4	20	5000	3.5(35)	0.02	9.2
<b>RC-125</b>	109.8	108.5	25	5000	3.5(35)	0.03	11.1
<b>RC-145</b>	152.2	143.9	30	5000	3.5(35)	0.03	14.6
<b>RC-200</b>	279.3	273.6	35	4000	4.0(40)	0.26	35.5

## DIMENSIONS

Model	A	B	C1	C2	D	E(h7)	F	G1max.	G1min.	G2max.	G2min.	H	J	K
<b>RC-85</b>	85	20	120	116	100	65	30	45	25	28	8	70	150	M20x1.5
<b>RC-100</b>	100	20	135	131	115	80	40	45	25	28	8	72	158.5	M30x1.5
<b>RC-125</b>	125	25	160	156	140	110	40	50	25	33	8	78	164	M30x1.5
<b>RC-145</b>	145	30	187	183	165	110	50	55	25	38	8	89.5	169.5	M40x1.5
<b>RC-200</b>	195	35	257	257	225	120	55	73	38	51.5	16.5	120	222.5	M36x4.0

Model	L1	L2	M(H8)	M1	N	P	Q	Q1	R	S1	S2	T1	T2
<b>RC-85</b>	6~M8x75	12.5	20.5	10	40	14	4	3	RC3/8	31	M4x10	48	M5x9
<b>RC-100</b>	6~M8x75	12.5	32	10	50	14	4	3	RC3/8	31	M4x10	48	M5x9
<b>RC-125</b>	6~M8x80	11	32	10	50	14	4	3	RC3/8	31	M4x10	48	M5x9
<b>RC-145</b>	6~M10x90	18	42	12	57	14	4	3	RC3/8	31	M4x10	48	M5x9
<b>RC-200</b>	6~M16x130	26	38	12	65	15	6.5	4	RC1/2	35	M4x10	60	M5x11

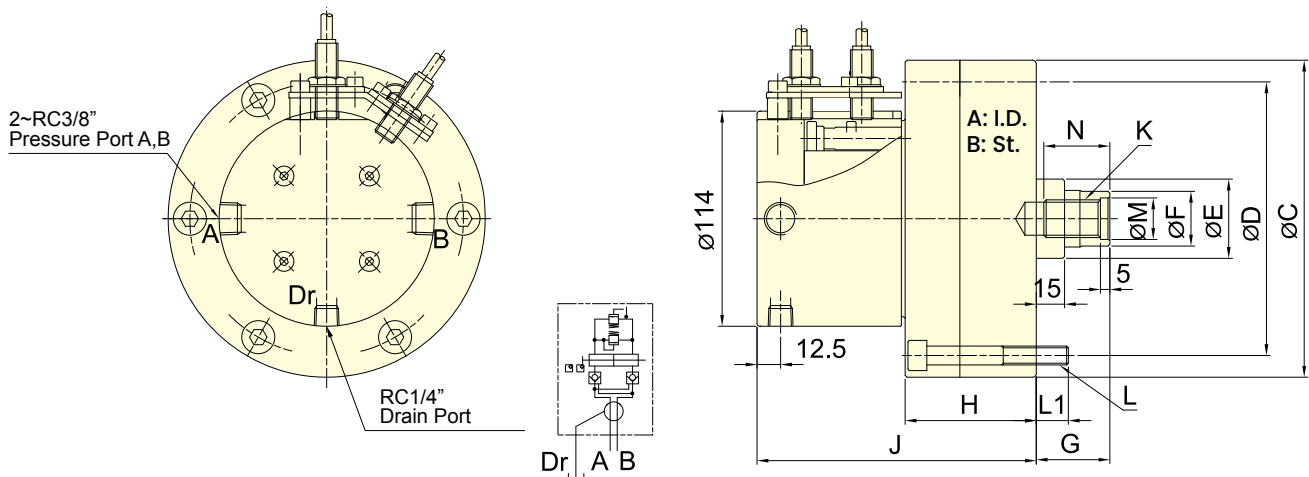
- Rotating joint and Proximity switch with bracket type.

<p><b>F1</b></p>	<p>With single path rotating joint (Fixed type)</p>	<p><b>F2</b></p>	<p>With double paths rotating joint(Fixed type)</p>
<p><b>M1</b></p>	<p>With single path rotating joint(Moving type)</p>	<p><b>M2</b></p>	<p>With double paths rotating joint(Moving type)</p>
<p><b>B</b></p>	<p>linear Sensor with bracket</p>	<p><b>S</b></p>	<p>Proximity switch with bracket</p>

- \* The proximity switch and rotary joint are optional.
- \* Choose and attach the appropriate type.
- \* Please contact AUTOGRIP for more detailed drawing.



- For short form, light weight and high speed rotary cylinder.
- Built-in safety check valves, pressure relief valves and proximity sensor.
- Can screw it from the rear end of the cylinder when mounting.
- The drain port should be independently connected to oil tank to avoid back pressure.
- Stroke Detection Type can be customized to Linear Positioning System.



Subject to technical changes

## SPECIFICATIONS

Model	Eff. piston area		Piston stroke	Max. speed	Max. pressure	I	Weight
	Extend	Retract					
	cm <sup>2</sup>	cm <sup>2</sup>				kg · m <sup>2</sup>	
<b>RE-110</b>	92.7	87.9	20	6000	3.5(35)	0.02	6.9
<b>RE-120</b>	110.8	106	21	6000	4.0(40)	0.03	8.8
<b>RE-130</b>	130.4	123.1	30	6000	4.0(40)	0.03	9.1

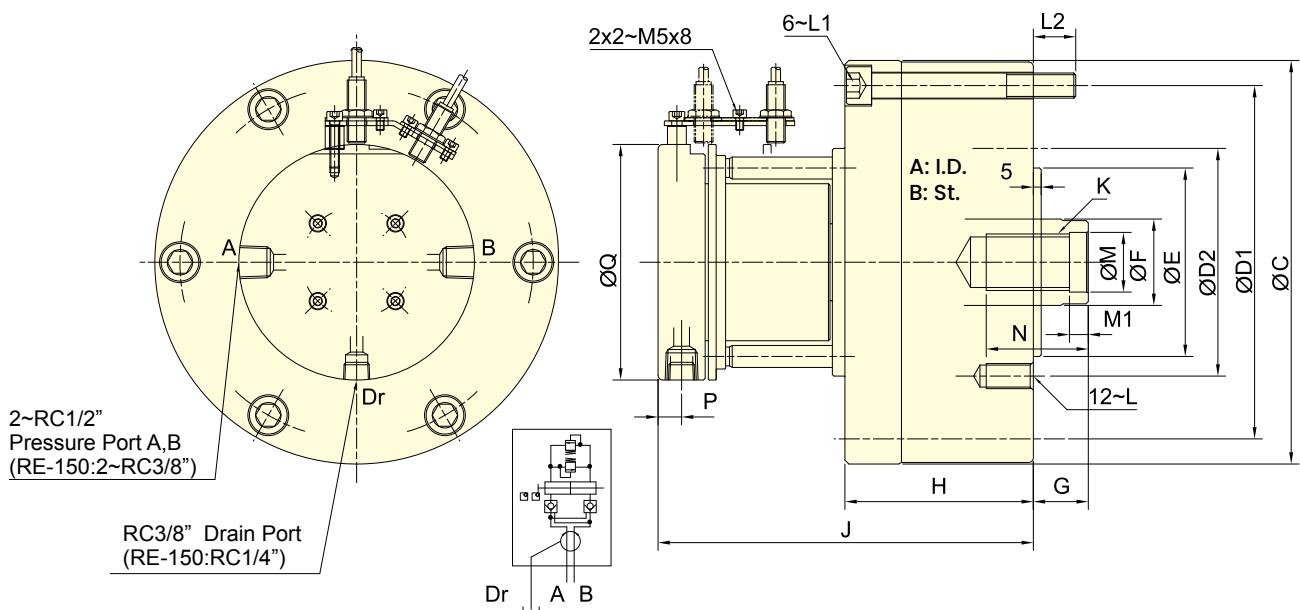
## DIMENSIONS

Model	A	B	C (h7)	D	E	F	G max.	G min.	H	J	K	L	L1	M (H8)	N
<b>RE-110</b>	110	20	145	128	42	29	60	40	66	146	M20x2.5	6~M8x70	12	22	35
<b>RE-120</b>	120	21	168	145	42	29	60	39	69.5	148	M20x2.5	6~M10x75	17	22	35
<b>RE-130</b>	130	30	168	150	50	33	60	30	79.5	158	M24x3.0	6~M10x85	17	27	40

\*Proximity sensor : DC 10~30V 100mA NPN.



- For short form, light weight and high speed rotary cylinder, suitable for vertical lathe.
- Built-in safety check valves, pressure relief valves and proximity sensor.
- Can screw it from the rear end of the cylinder when mounting.
- The drain port should be independently connected to oil tank to avoid back pressure.
- Stroke Detection Type can be customized to Linear Positioning System.



Subject to technical changes

## SPECIFICATIONS

Model	Eff. piston area		Piston stroke	Max. speed	Max. pressure	I Moment of inertia	Weight
	Extend	Retract					
	cm <sup>2</sup>	cm <sup>2</sup>	mm	min <sup>-1</sup> (r.p.m.)	MPa(kgf/cm <sup>2</sup> )	kg · m <sup>2</sup>	kg
<b>RE-150</b>	174.4	160.8	30	5500	4.0 (40)	0.06	14.9
<b>RE-200K</b>	292.4	274.9	35	4000	4.0 (40)	0.19	29.1
<b>RE-200L</b>	292.4	265.4	50	4000	5.0 (50)	0.21	30.4
<b>RE-250</b>	465.2	438.2	60	2000	5.0 (50)	0.43	47.2

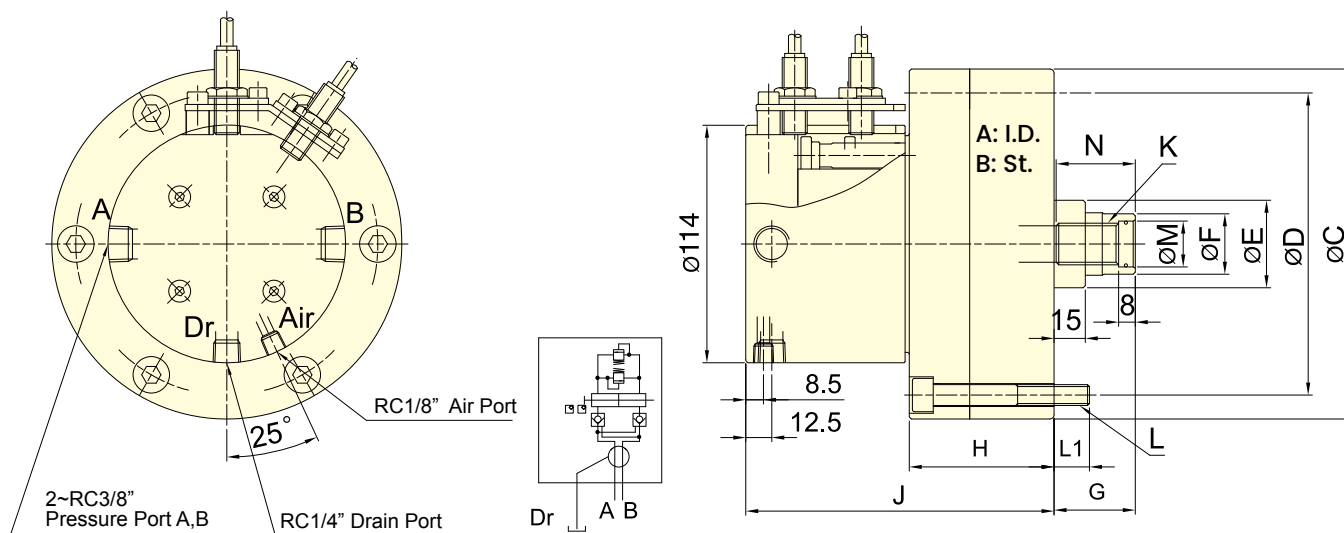
## DIMENSIONS

Model	A	B	C	D1	D2	E (h7)	F	G max.	G min.	H	J	K	L	L1	L2	M (H8)	M1	N	P	Q
<b>RE-150</b>	150	30	205	180	130	110	45	60	30	99	177.5	M30x3.5	M12x24	M12x105	18.5	32	10	50	12.5	114
<b>RE-200K</b>	195	35	257	225	145	120	55	73	38	120	239	M36x4.0	M16x30	M16x130	27	38	12	65	15	150
<b>RE-200L</b>	195	50	257	225	170	125	65	80	30	135	254	M42x3.0	M16x30	M16x145	27	45	12	65	15	150
<b>RE-250</b>	245	60	307	275	220	160	65	85	25	165	280	M42x3.0	M20x35	M16x175	28	45	12	65	15	150

\*Proximity sensor : DC 10~30V 100mA NPN.



- For short form, light weight and high speed rotary cylinder. To allow compressed air to be feed from the rear end of the distributor through the rotating union.
- Built-in safety check valves, pressure relief valves and proximity sensor.
- Can screw it from the rear end of the cylinder when mounting.
- The drain port should be independently connected to oil tank to avoid back pressure.
- When used, a little oil mist should be contained.
- Stroke Detection Type can be customized to Linear Positioning System.



Subject to technical changes

## SPECIFICATIONS

Model	Eff. piston area		Piston stroke	Max. speed	Max. pressure	Air connection Max. pressure	I Moment of inertia	Weight
	Extend	Retract						
	cm <sup>2</sup>	cm <sup>2</sup>	mm	min <sup>-1</sup> (r.p.m.)	MPa(kgf/cm <sup>2</sup> )	MPa (kgf/cm <sup>2</sup> )	kg · m <sup>2</sup>	kg
<b>RE-A110</b>	91.2	87.9	20	6000	4.0(40)	0.8(8)	0.02	6.9
<b>RE-A120</b>	109.3	106	21	6000	4.0(40)	0.8(8)	0.02	8.8
<b>RE-A130</b>	128.9	123.1	30	6000	4.0(40)	0.8(8)	0.03	9.1

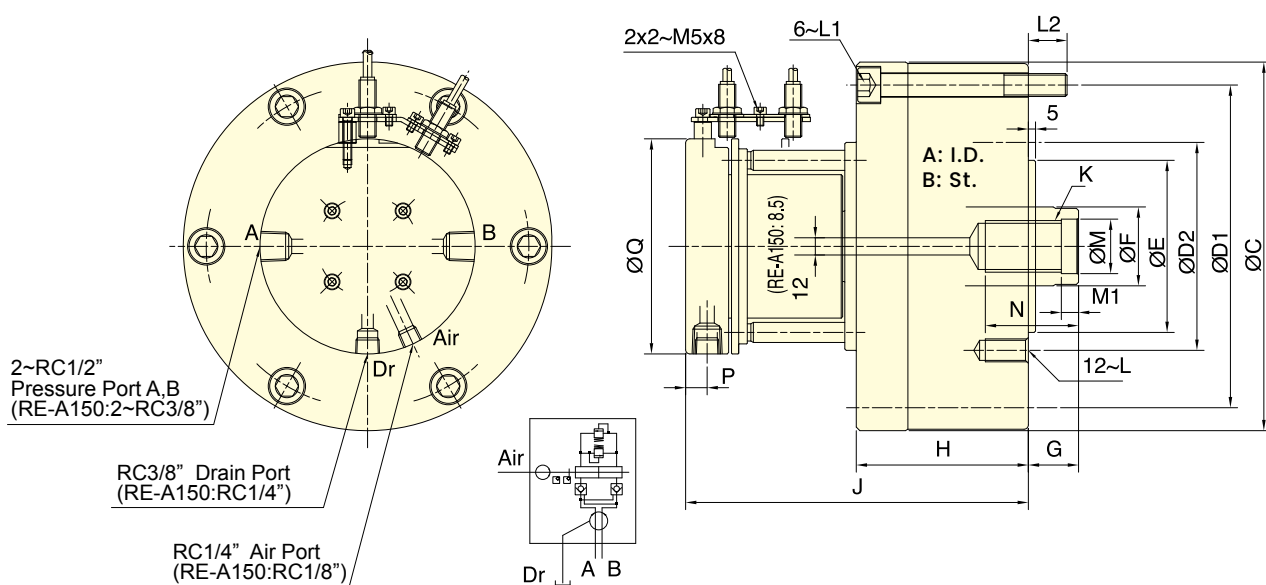
## DIMENSIONS

Model	A	B	C (h7)	D	E	F	G max.	G min.	H	J	K	L	L1	M (H8)	N
<b>RE-A110</b>	110	20	145	128	42	29	60	40	66	146	M20x2.5	6~M8x70	12	22	38
<b>RE-A120</b>	120	21	168	145	42	29	60	39	69.5	148	M20x2.5	6~M10x75	17	22	38
<b>RE-A130</b>	130	30	168	150	50	33	60	30	79.5	158	M24x3.0	6~M10x85	17	27	43

\*Proximity sensor : DC 10-30V 100mA NPN.



- For short form, light weight and high speed rotary cylinder. To allow compressed air to be feed from the rear end of the distributor through the rotating union.
- Built-in safety check valves, pressure relief valves and proximity sensor.
- Can screw it from the rear end of the cylinder when mounting.
- The drain port should be independently connected to oil tank to avoid back pressure.
- When used, a little oil mist should be contained.
- Stroke Detection Type can be customized to Linear Positioning System.



Subject to technical changes

### SPECIFICATIONS

Model	Eff. piston area		Piston stroke	Max. speed	Max. pressure	Air connection Max. pressure	I		Weight
	Extend	Retract					Moment of inertia		
	cm <sup>2</sup>	cm <sup>2</sup>	mm	min <sup>-1</sup> (r.p.m.)	MPa(kgf/cm <sup>2</sup> )	MPa (kgf/cm <sup>2</sup> )	kg · m <sup>2</sup>		kg
RE-A150	174.4	160.8	30	5500	4.0(40)	0.8(8)	0.06		14.9
RE-A200K	292.4	274.9	35	4000	4.0(40)	0.8(8)	0.19		29.1
RE-A200L	292.4	265.4	50	4000	5.0(50)	0.8(8)	0.21		30.4
RE-A250	465.2	438.2	60	2000	5.0(50)	0.8(8)	0.43		47.2

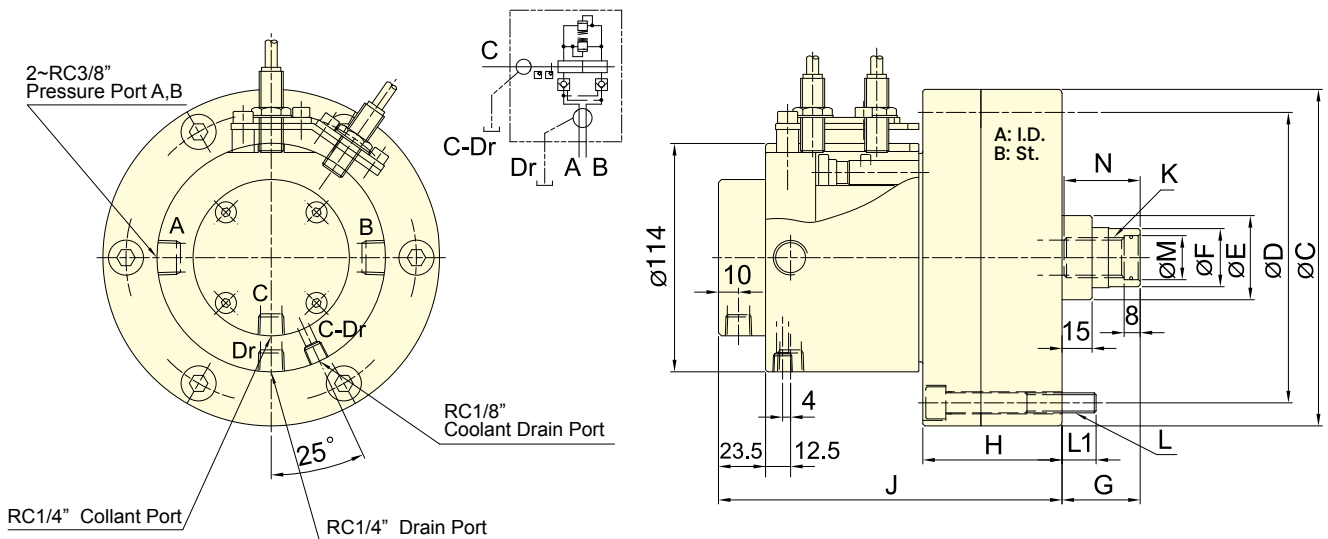
### DIMENSIONS

Model	A	B	C	D1	D2	E (h7)	F	G max.	G min.	H	J	K	L	L1	L2	M (H8)	M1	N	P	Q
RE-A150	150	30	205	180	130	110	45	60	30	99	177.5	M30x3.5	M12x24	M12x105	18.5	32	10	50	12.5	114
RE-A200K	195	35	257	225	145	120	55	73	38	120	239	M36x4.0	M16x30	M16x130	27	38	12	65	15	150
RE-A200L	195	50	257	225	170	125	65	80	30	135	254	M42x3.0	M16x30	M16x145	27	45	12	65	15	150
RE-A250	245	60	307	275	220	160	65	85	25	165	280	M42x3.0	M20x35	M16x175	28	45	12	65	15	150

\*Proximity sensor : DC 10~30V 100mA NPN.



- For short form, light weight and high speed rotary cylinder. To allow coolant to be feed from the rear end of the distributor through the rotating union.
- Built-in safety check valves, pressure relief valves and proximity sensor.
- Can screw it from the rear end of the cylinder when mounting.
- The drain port should be independently connected to oil tank to avoid back pressure.
- The rotary cylinder should not run without liquid through coolant port.
- Stroke Detection Type can be customized to Linear Positioning System.



Subject to technical changes

## SPECIFICATIONS

Model	Eff. piston area		Piston stroke	Max. speed	Max. pressure	Coolant connection Max. pressure	I Moment of inertia	Weight
	Extend	Retract						
	cm <sup>2</sup>	cm <sup>2</sup>						
RE-L110	92.7	87.9	20	6000	4.0(40)	1.5(15)	0.02	7.2
RE-L120	109.3	106	21	6000	4.0(40)	1.5(15)	0.03	9.1
RE-L130	128.9	123.1	30	6000	4.0(40)	1.5(15)	0.03	9.5

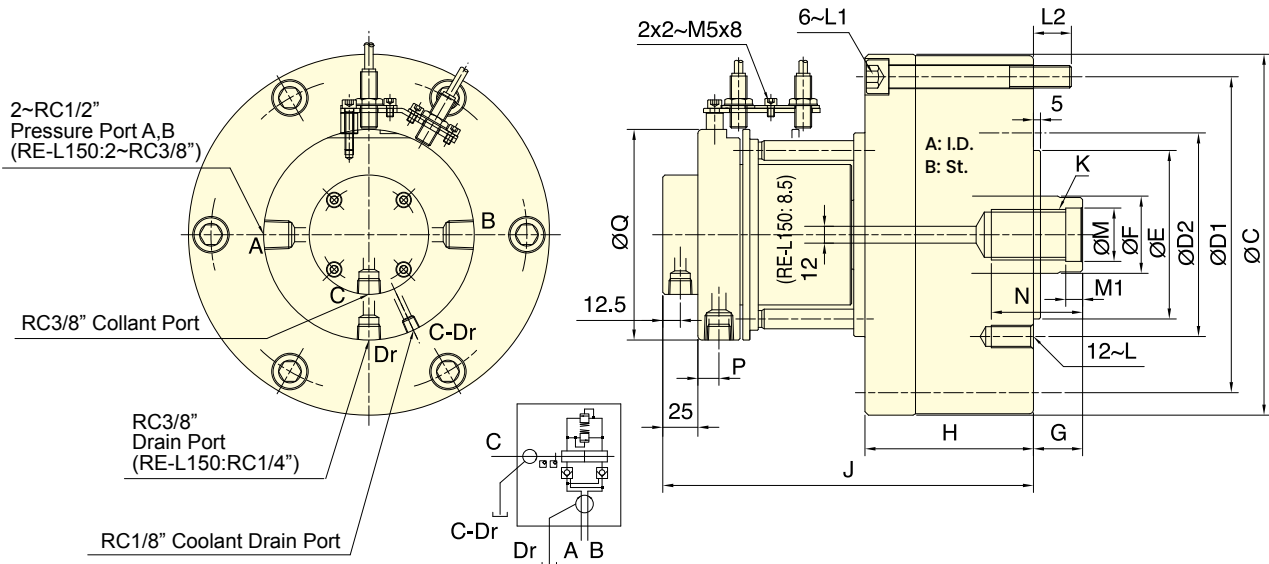
## DIMENSIONS

Model	A	B	C (h7)	D	E	F	G max.	G min.	H	J	K	L	L1	M (H8)	N
RE-L110	110	20	145	128	42	29	60	40	66	169.5	M20x2.5	6~M8x70	12	22	38
RE-L120	120	21	168	145	42	29	60	39	69.5	171.5	M20x2.5	6~M10x75	17	22	38
RE-L130	130	30	168	150	50	33	60	30	79.5	181.5	M24x3.0	6~M10x85	17	27	43

\*Proximity sensor : DC 10-30V 100mA NPN.



- For short form, light weight and high speed rotary cylinder. To allow coolant to be feed from the rear end of the distributor through the rotating union, suitable for vertical lathe.
- Built-in safety check valves, pressure relief valves and proximity sensor.
- Can screw it from the rear end of the cylinder when mounting.
- The drain port should be independently connected to oil tank to avoid back pressure.
- The rotary cylinder should not run without liquid through coolant port.
- Stroke Detection Type can be customized to Linear Positioning System.



Subject to technical changes

### SPECIFICATIONS

Model	Eff. piston area		Piston stroke mm	Max. speed min <sup>-1</sup> (r.p.m.)	Max. pressure MPa(kgf/cm <sup>2</sup> )	Coolant connection Max. pressure MPa (kgf/cm <sup>2</sup> )	I		Weight kg
	Extend	Retract					Moment of inertia		
	cm <sup>2</sup>	cm <sup>2</sup>					kg · m <sup>2</sup>	kg	
<b>RE-L150</b>	174.4	160.8	30	5500	4.0(40)	1.5(15)	0.06	15.2	
<b>RE-L200K</b>	292.4	274.9	35	4000	4.0(40)	1.5(15)	0.19	29.4	
<b>RE-L200L</b>	292.4	265.4	50	4000	5.0(50)	1.5(15)	0.21	30.7	
<b>RE-L250</b>	465.2	438.2	60	2000	5.0(50)	1.5(15)	0.43	47.5	

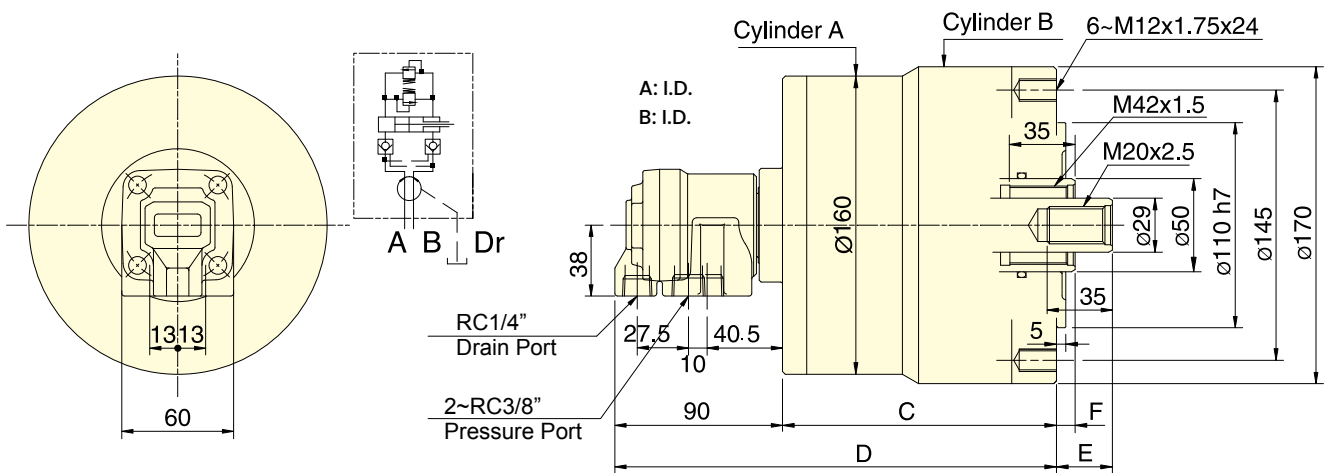
### DIMENSIONS

Model	A	B	C	D1	D2	E (h7)	F	G max.	G min.	H	J	K	L	L1	L2	M (H8)	M1	N	P	Q
<b>RE-L150</b>	150	30	205	180	130	110	45	60	30	99	201	M30x3.5	M12x24	M12x105	18.5	32	10	50	12.5	114
<b>RE-L200K</b>	195	35	257	225	145	120	55	73	38	120	264	M36x4.0	M16x30	M16x130	27	38	12	65	15	150
<b>RE-L200L</b>	195	50	257	225	170	125	65	80	30	135	279	M42x3.0	M16x30	M16x145	27	45	12	65	15	150
<b>RE-L250</b>	245	60	307	275	220	160	65	85	25	165	305	M42x3.0	M20x35	M16x175	28	45	12	65	15	150

\*Proximity sensor : DC 10-30V 100mA NPN.



- For short form, light weight, double rod rotary cylinder.
- Built-in safety check valves and pressure relief valves.
- The drain port should be independently connected to oil tank to avoid back pressure.



Subject to technical changes

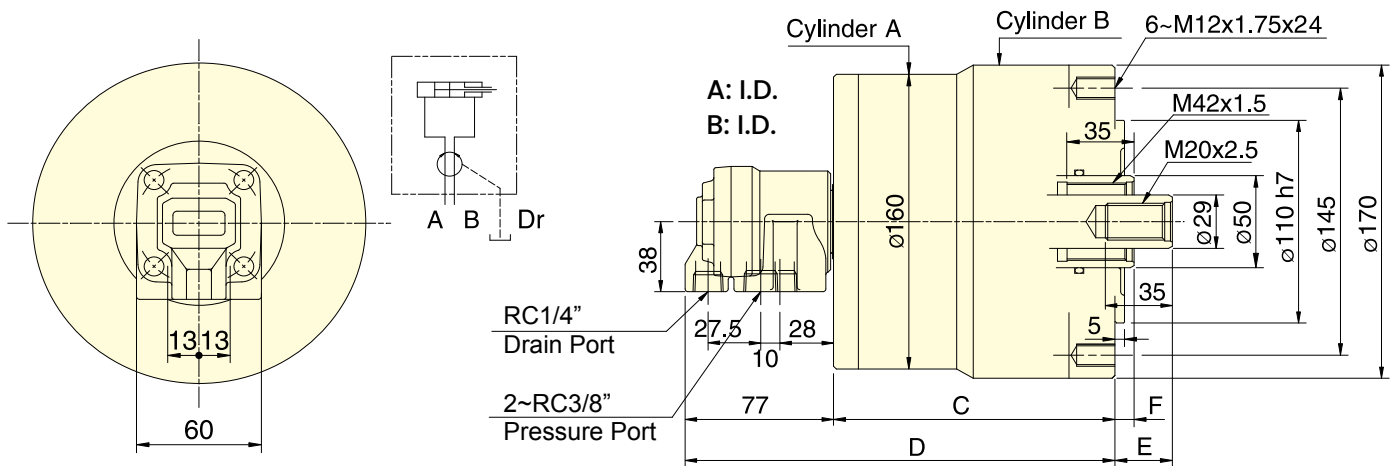
## SPECIFICATIONS

Model	Eff. piston area				Piston stroke	Max. speed	Max. pressure	I	Weight
	Extend		Retract						
	A	B	A	B					
RD-120	122.7	126.1	116.1	113.1	20	5000	3.0(30)	0.14	11.3
RD-125	122.7	126.1	116.1	113.1	25	5000	3.0(30)	0.15	11.5

## DIMENSIONS

Model	A	B	C	D	E max.	E min.	F max.	F min.
RD-120	125	130	137	227	60	40	35	15
RD-125	125	130	147	237	55	30	35	10

- For short form, light weight, double rod rotary cylinder.
- The drain port should be independently connected to oil tank to avoid back pressure.



Subject to technical changes

## SPECIFICATIONS

Model	Eff. piston area				Piston stroke mm	Max. speed min <sup>-1</sup> (r.p.m.)	Max. pressure MPa(kgf/cm <sup>2</sup> )	I Moment of inertia kg · m <sup>2</sup>	Weight kg
	Extend		Retract						
	A cm <sup>2</sup>	B cm <sup>2</sup>	A cm <sup>2</sup>	B cm <sup>2</sup>					
<b>RD-120N</b>	122.7	126.1	116.1	113.1	20	5000	3.0(30)	0.14	11.2
<b>RD-125N</b>	122.7	126.1	116.1	113.1	25	5000	3.0(30)	0.15	11.4

## DIMENSIONS

Model	A	B	C	D	E max.	E min.	F max.	F min.
<b>RD-120N</b>	125	130	137	214	60	40	35	15
<b>RD-125N</b>	125	130	147	224	55	30	35	10