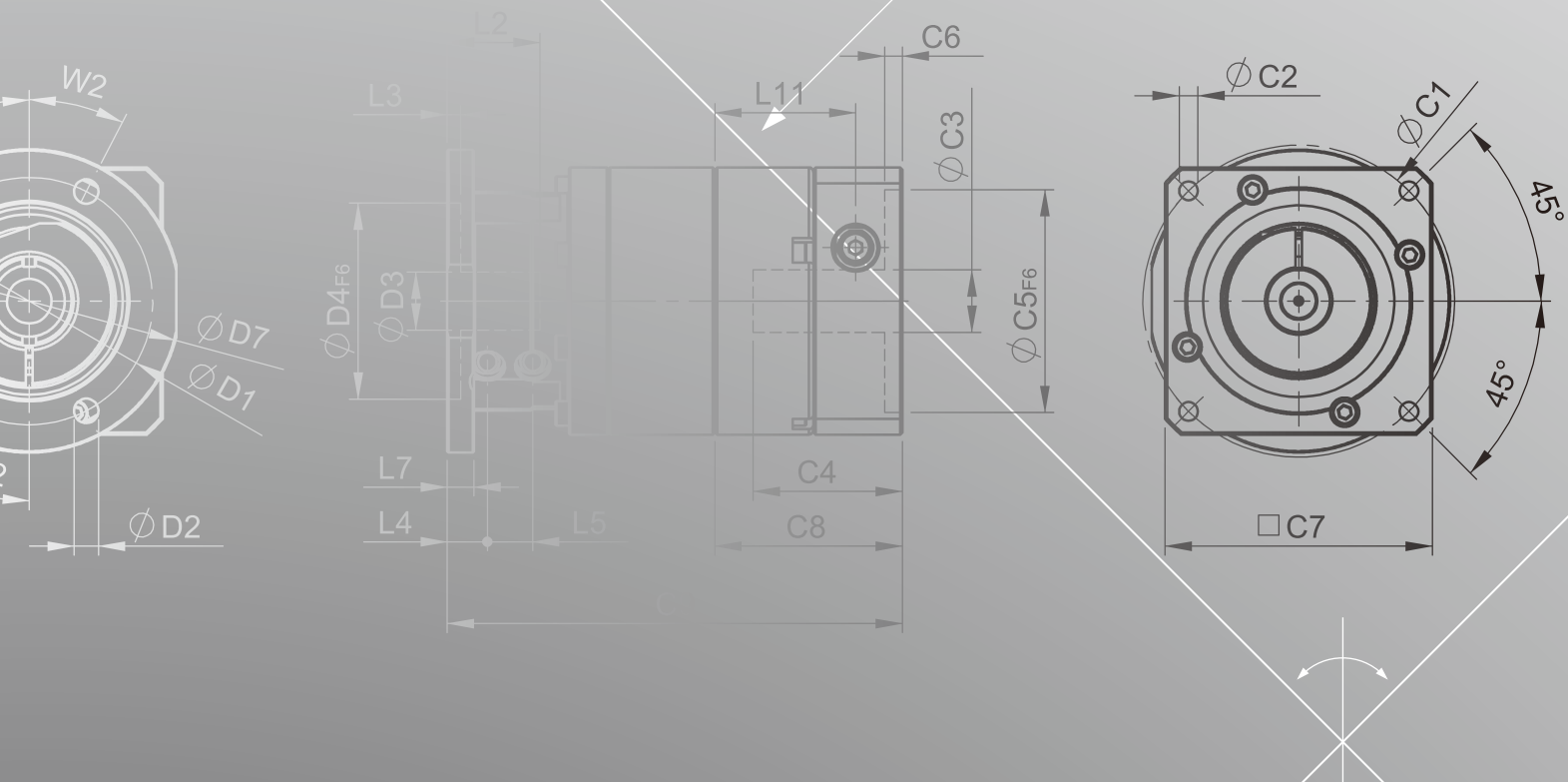
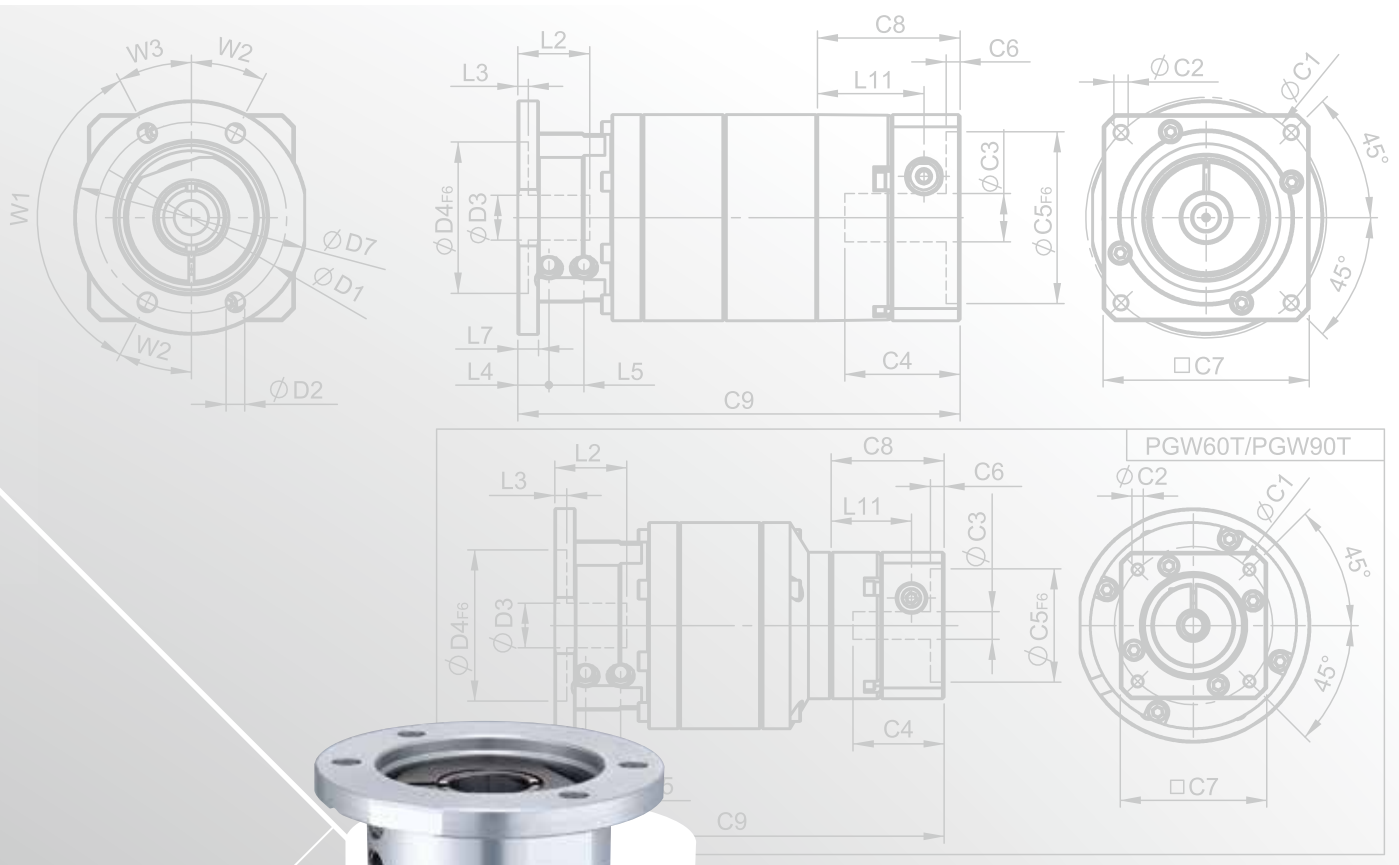
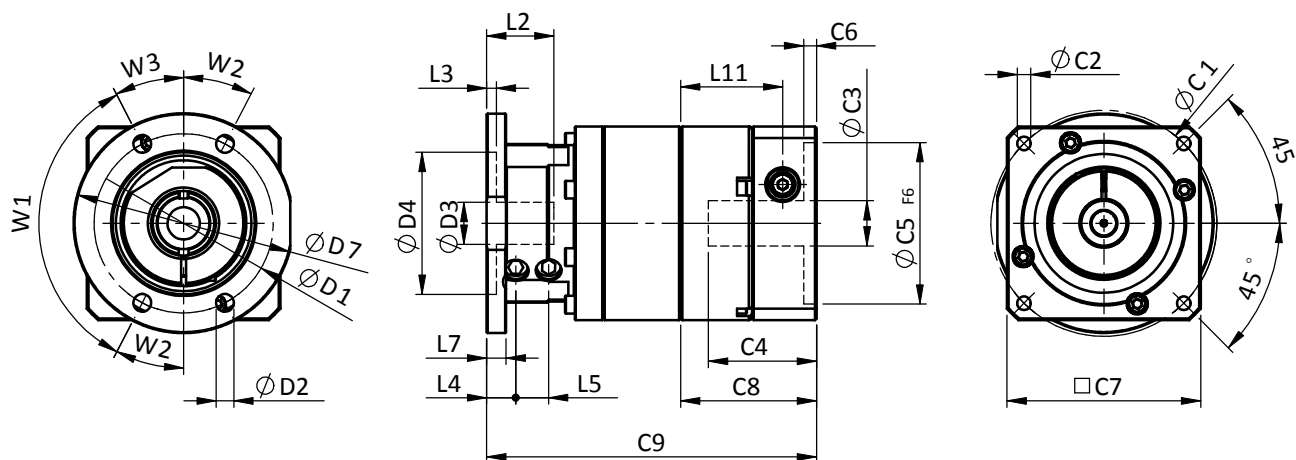


# PGW SERIES





## PGW Single Stage Dimensions



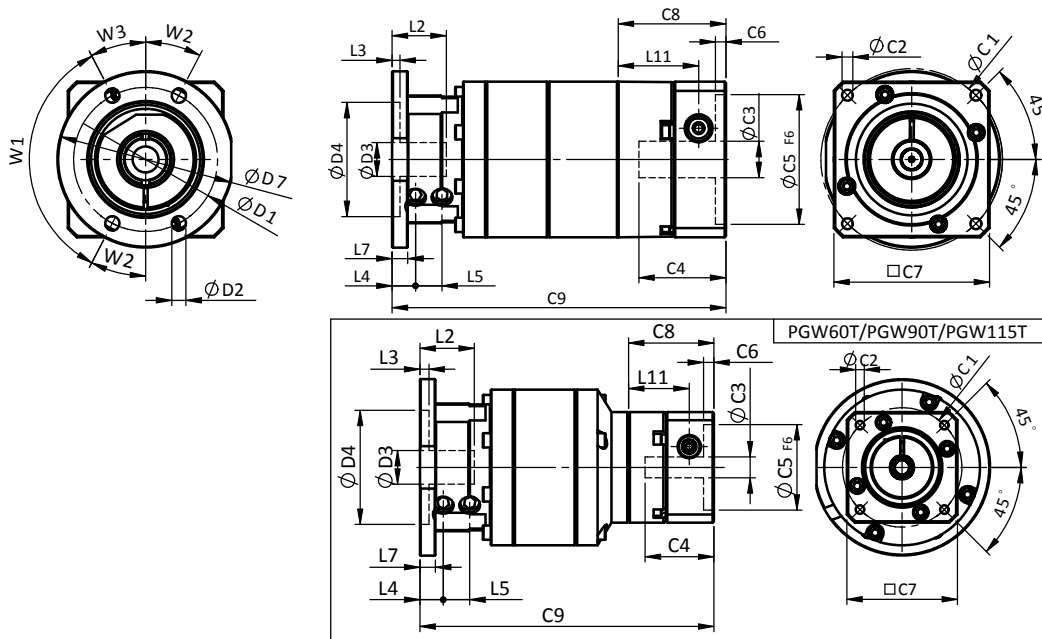
## Specifications

Unit:mm

| Dimensions         | PGW60   | PGW90       | PGW115      |
|--------------------|---------|-------------|-------------|
| D1                 | 55.5    | 73          | 105         |
| D2                 | 5.5     | 5.5         | 6.6         |
| D3                 | 16      | 20          | 30          |
| D4                 | 44      | 60          | 80          |
| D7                 | 70      | 84          | 118         |
| L2                 | 31      | 31          | 37          |
| L3                 | 3.5     | 3.5         | 3.5         |
| L4                 | 9       | 10.2        | 12.5        |
| L5                 | 10.2    | 10.9        | 13          |
| L7                 | 6       | 6           | 10          |
| L11                | 31.6    | 37.3        | 51.8        |
| W1                 | 125°    | 90°         | 90°         |
| W2                 | 27.5°   | 22.5°       | 22.5°       |
| W3                 | 27.5°   | 67.5°       | 67.5°       |
| C1 <sup>2</sup>    | 70      | 90          | 145         |
| C2 <sup>2</sup>    | M5x0.8P | M6x1.0P     | M8x1.25P    |
| C3 <sup>2</sup>    | ≤14/≤19 | ≤19/≤24/≤28 | ≤24/≤32/≤38 |
| C4 <sup>2</sup>    | 33.5    | 41          | 51.5        |
| C5 <sup>2</sup> F6 | 50      | 70          | 110         |
| C6 <sup>2</sup>    | 4       | 6           | 6           |
| C7 <sup>2</sup>    | 60      | 90          | 130         |
| C8 <sup>2</sup>    | 42.1    | 51.5        | 68          |
| C9 <sup>2</sup>    | 102.2   | 126.5       | 172         |

- ★ C1~C9 are motor specific dimensions (metric std shown). Size may vary according to motor flange.
- ★ Specification subject to change without notice.

## PGW Double Stage Dimensions



## Specifications

Unit:mm

| Dimensions                    | PGW60   | PGW60T  | PGW90       | PGW90T  | PGW115T     |
|-------------------------------|---------|---------|-------------|---------|-------------|
| D1                            | 55.5    |         | 73          |         | 105         |
| D2                            | 5.5     |         | 5.5         |         | 6.6         |
| D3 <sub>h6</sub>              | 16      |         | 20          |         | 30          |
| D4 <sub>g6</sub>              | 44      |         | 60          |         | 80          |
| D7                            | 70      |         | 84          |         | 118         |
| L2                            | 31      |         | 31          |         | 37          |
| L3                            | 3.5     |         | 3.5         |         | 3.5         |
| L4                            | 9       |         | 10.2        |         | 12.5        |
| L5                            | 10.2    |         | 10.9        |         | 13          |
| L7                            | 6       |         | 6           |         | 10          |
| L11                           | 31      | 23.4    | 37.3        | 31      | 37.3        |
| W1                            | 125°    |         | 90°         |         | 90°         |
| W2                            | 27.5°   |         | 22.5°       |         | 22.5°       |
| W3                            | 27.5°   |         | 67.5°       |         | 67.5°       |
| C1 <sup>2</sup>               | 70      | 46      | 90          | 70      | 90          |
| C2 <sup>2</sup>               | M5x0.8P | M4x0.7P | M6x1.0P     | M5x0.8P | M6x1.0P     |
| C3 <sup>2</sup>               | ≤14/≤19 | ≤8/≤11  | ≤19/≤24/≤28 | ≤14/≤19 | ≤19/≤24/≤28 |
| C4 <sup>2</sup>               | 33.5    | 26.5    | 41          | 33.5    | 41          |
| C5 <sup>2</sup> <sub>F6</sub> | 50      | 30      | 70          | 50      | 70          |
| C6 <sup>2</sup>               | 4       | 4       | 6           | 4       | 6           |
| C7 <sup>2</sup>               | 60      | 42.6    | 90          | 60      | 90          |
| C8 <sup>2</sup>               | 41.5    | 32.9    | 51.5        | 41.5    | 51.5        |
| C9 <sup>2</sup>               | 128.6   | 113.3   | 160.3       | 145.8   | 193.6       |

★ C1~C9 are motor specific dimensions (metric std shown). Size may vary according to motor flange.  
★ Specification subject to change without notice.

## PGW Specifications Table

| Specifications  | Stage        | Ratio  | PGW-60                | PGW-90                               | PGW-115        |          |
|---|--------------|--|-----------------------|--------------------------------------|----------------|----------|
| N · m   | 1            | 3  | 28                    | 85                                   | 200            |          |
|   |              | 4  | 32                    | 80                                   | 215            |          |
|   |              | 5  | 35                    | 95                                   | 215            |          |
|   |              | 7  | 28                    | 85                                   | 200            |          |
|   |              | 9  | 23                    | 75                                   | 195            |          |
|   |              | 10   | 21                    | 65                                   | 180            |          |
|   |              | Stage  | Ratio                 | PGW-60/PGW-60T                       | PGW-90/PGW-90T | PGW-115T |
|   | 2            | 15   | 35/24                 | 95/68                                | 168            |          |
|   |              | 20   | 35/31                 | 95/95                                | 215            |          |
|   |              | 25   | 35/30                 | 95/95                                | 215            |          |
|   |              | 35   | 35/28                 | 95/95                                | 215            |          |
|   |              | 45   | 35/27                 | 95/92                                | 215            |          |
|   |              | 50   | 35/27                 | 95/82                                | 205            |          |
|   |              | 70   | 28/28                 | 85/85                                | 200            |          |
|   |              | 90   | 23/23                 | 75/75                                | 195            |          |
|   |              | 100  | 21/21                 | 65/65                                | 180            |          |
|   |              | Stage  | Ratio                 | PGW-60T                              | PGW-90T        | PGW-115T |
|   | 3            | 125  | 35                    | 95                                   | 215            |          |
|   |              | 175  | 35                    | 95                                   | 215            |          |
|   |              | 225  | 35                    | 95                                   | 215            |          |
|   |              | 245  | 35                    | 95                                   | 215            |          |
| 315   |              | 35   | 95                    | 215                                  |                |          |
| 405   |              | 35   | 95                    | 215                                  |                |          |
| 567   |              | 28   | 85                    | 200                                  |                |          |
| 729   |              | 23   | 75                    | 195                                  |                |          |
|   | 1000         | 21   | 65                    | 180                                  |                |          |
| Emergency Stop Torque $T_{2NOT}$  | N · m        | (2.5 times of Nominal Output Torque)<br>(* Max. Output Torque $T_{2B}$ = 60% of Emergency Stop Torque) |                       |                                      |                |          |
| Nominal Input Speed $n_{1N}$  | rpm          | 1,2,3  | 3-1000                | 4000                                 | 3000           | 2500     |
| Max. Input Speed $n_{1max}$   | rpm          | 1,2,3  | 3-1000                | 6000                                 | 6000           | 5000     |
| Standard Backlash P2  | arcmin       | 1  | 3-10                  | ≤ 8                                  | ≤ 7            | ≤ 6      |
|   |              | 2  | 15-100                | ≤ 10                                 | ≤ 9            | ≤ 8      |
|   |              | 3  | 125~1000              | ≤ 12                                 | ≤ 12           | ≤ 12     |
| Operating Temp.   | °C           | 1,2,3  | 3-1000                | -10°C ~ +90°C                        |                |          |
| Service Life  | hr           | 1,2,3  | 3-1000                | 20,000 (10,000 Continuous operation) |                |          |
| Efficiency  | %            | 1  | 3-10                  | ≥ 95%                                |                |          |
|   |              | 2  | 15-100                | ≥ 90%                                |                |          |
|   |              | 3  | 125~1000              | ≥ 85%                                |                |          |
| Weight  | kg           | 1  | 3-10                  | 1.2                                  | 2.9            | 6.4      |
|   |              | 2  | 15-100                | 1.6/1.4                              | 4.3/3.2        | 8.0      |
|   |              | 3  | 125~1000              | 1.8                                  | 4.6            | 9.4      |
| Mounting Position   | -            | 1,2,3  | 3-1000                | Any direction                        |                |          |
| Noise Level <sup>2</sup>  | dBA/1m       | 1,2,3  | 3-1000                | 63                                   | 66             | 67       |
| Protection Class  | -            | 1,2,3  | 3-1000                | IP65                                 |                |          |
| Lubrication   | -            | 1,2,3  | 3-1000                | Synthetic Lubricant                  |                |          |
| Inertia (J1)  |              |  |                       |                                      |                |          |
| Stage   | Ratio        | unit   | PGW-60(ψ14)           | PGW-90(ψ19)                          | PGW-115(ψ24)   |          |
| 1   | 3            | Kg · cm <sup>2</sup>   | 0.23                  | 0.77                                 | 2.30           |          |
|   | 4            |  | 0.21                  | 0.67                                 | 1.92           |          |
|   | 5~10         |  | 0.21                  | 0.61                                 | 1.71           |          |
| Stage   | Ratio        |  | PGW-60(ψ14)/ -60T(ψ8) | PGW-90(ψ19) / -90T(ψ14)              | PGW-115T(ψ19)  |          |
| 2   | 15           |  | 0.23/(0.04)           | 0.77/(0.23)                          | 0.77           |          |
|   | Other ratios |  | 0.21/(0.03)           | 0.61/(0.21)                          | 0.61           |          |
| Stage   | Ratio        |  | PGW-60T(ψ8)           | PGW-90T(ψ14)                         | PGW-115T(ψ19)  |          |
| 3   | All ratios   |  | 0.03                  | 0.21                                 | 0.61           |          |
| <p>* 1. Applied to the output shaft center at 100 rpm.</p> <p>* 2. Measured at 3000 rpm with no load. These values are measured by gearbox with ratio = 10 (1-stage) or ratio = 100 (2-stage) at nominal input speed or 3000 rpm (if nominal input speed is higher than 3000 rpm) with no load.</p> <p>※ The above figures/specifications are subject to change without prior notice.</p> |              |  |                       |                                      |                |          |

Products due to human error, natural disasters or other factors lead to poor or damaged, will not be covered under warranty.