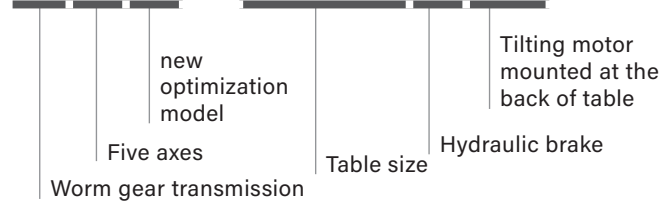


GFA-H/HB series

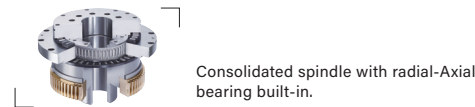
CNC Tilting Rotary Table



GFA - 255H(B)



- Worktable diameter $\varnothing 255, \varnothing 320$.
- The hydraulic brake equipped with radial and axial bearings.(P.18)
- Full gear depth transmitted by dual lead worm drive, resulting in higher efficiency and lower backlash.(P.20)



SPECIFICATIONS

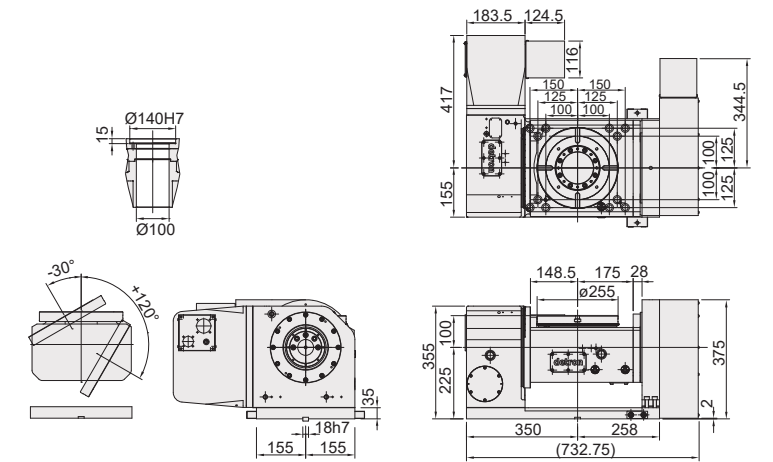
MODEL	Unit	GFA-255H/HB	GFA-320H			
Worktable diameter	mm / inch	$\varnothing 255 / \varnothing 10.04$	$\varnothing 320 / \varnothing 12.60$			
Center bore diameter	mm / inch	$\varnothing 140H7 / \varnothing 5.51H7$	$\varnothing 180H7 / \varnothing 7.09H7$			
Height of table (horizontal)	mm / inch	325 / 12.8	355 / 13.98			
Height of center (vertical)	mm / inch	225 / 8.86	255 / 10.04			
Width of T-slot	mm / inch	12H7 / 0.47H7	14H7 / 0.55H7			
Width of guide block	mm / inch	18 / 0.71	18 / 0.71			
Clamping method /pressure	MPa / psi	Hydraulic 5 / 725.0	Hydraulic 5 / 725.0			
Servo motor spec		refer to page 69				
Transmission ratio		R	T	R	T	
		1:90	1:120	1:120	1:120	
Max. table speed	min ⁻¹	22.2	16.6	22.2	16.6	
Allowable loading capacity	In Horizontal	kg / lb	120 / 264	200 / 440		
	In Tilting (0~90°)	kg / lb	90 / 166.33	150 / 330		
Allowable unblancing work moment	WxL	Nm /ft. lbs.	92 / 68	130 / 95.8		
Allowable load (when table clamped)	F	N / lbs	16000 / 3590.40	20000 / 4488.0		
	FxL	Nm /ft. lbs.	900 / 663.8	1600 / 1179.2		
	FxL	Nm /ft. lbs.	900 / 663.8	1600 / 1179.2		
Allowable loading inertia	$\frac{W.D^2}{8}$	kg.m ²	0.98	2.6		
Resolution	deg.		0.001	0.001		
Indexing accuracy	sec		15"	50"	15"	50"
Repeatability	sec		6"	8"	6"	8"
Tilting angle range	deg.		-30 ~ +120	-30 ~ +120		
Net weight (servo motor excluded)	Kg / lb		320 / 704 347 / 765	470 / 1037		
Allowable cutting torque	Nm /ft. lbs.		370 / 272.9	780 / 569.4		
Allowable Max. rotary joint quantity	Port		6 / 6	6		

Note: R: Rotary Axis T: Tilt Axis

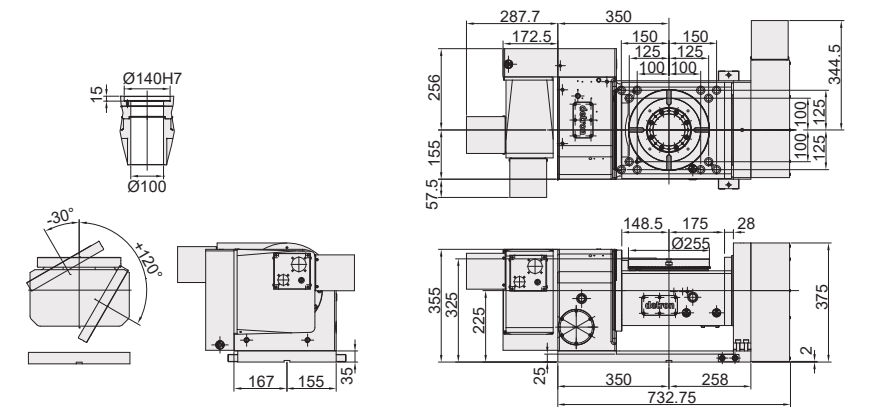
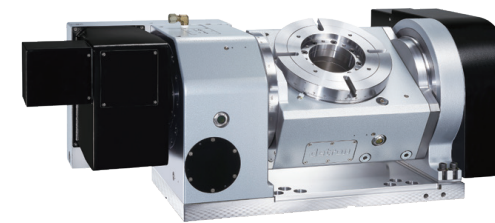
DIMENSIONAL DRAWINGS

Unit : mm

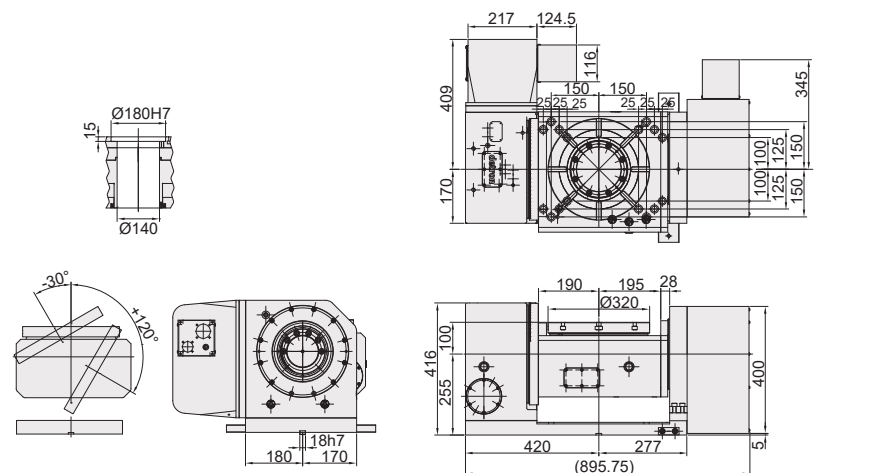
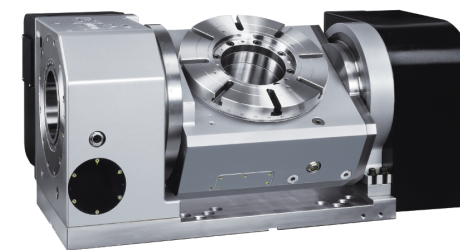
GFA-255H



GFA-255HB



GFA-320H



Note: 1. The length of servo guard may vary with servo motor type. (the metal sheet dimensions shown at above are based on Fanuc motor)

2. Allowable wheel torque at table speed of 1 min⁻¹.

3. According to application engineering, optical encoder is recommended for tilting axis.