

Bee Efficient:
DTC series drilling/tapping/milling
center
power up your business



Movie Like a Butterfly, Sting Like a **bee**

At **BeeCNC**, our DTC Series Drilling/Tapping/Milling Center is designed for exceptional efficiency and energy-saving performance. With a focus on production efficiency, our machines are engineered to optimize both speed and quality from the outset. Choose **BeeCNC** for a seamless, cost-effective manufacturing experience that truly packs a punch.

Specifications

Specifications		Unit	DTC-500	DTC-700
Travel	X axis	mm	500	700
	Y axis	mm	400	400
	Z axis	mm	330	330
	Distance from spindle nose to work surface	mm	150~480	150~480
workbench	Work surface size	mm	650*400	850*400
	Maximum workload	kg	300	300
	Work surface height (above ground)	mm	800	800
Spindle	Taper type		BT-30 Direct	BT-30 Direct
	Speed range	rpm	12000 / 24000 (OPT)	12000 / 24000 (OPT)
Feed rate	Rapid feed rate	m / min	X 、 Y 、 Z-48m /min	X 、 Y 、 Z-48m /min
	cutting feed rate	m / min	X 、 Y 、 Z-10m /min	X 、 Y 、 Z-10m /min
Automatic tool changing system	Tool specifications		BT-30	BT-30
	Maximum tool diameter	mm	Ø80mm	Ø80mm
	Numbers of tool		14 or 21	14 or 21
	Maximum tool length	mm	250mm	250mm
	Tool weight	kg	2KG	2KG



Fast :

12% more daily output

- servo tool changer. Tool change time reduced by 30%.
- Rapid traverse rates: 48m/min x 48m/min x 48m/min.

Aluminum
Die-Cast Workpiece
Processing

D50 facemill

D12 endmill

Center drill

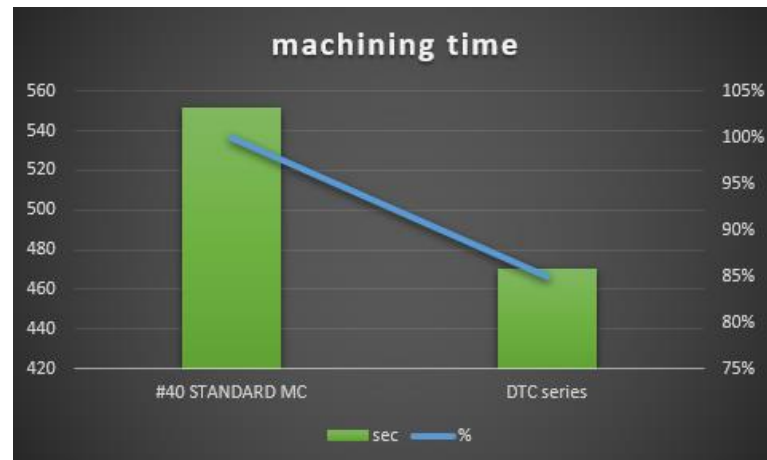
D5.0 drill

D2.4 drill

M6 tapper

M3 tapper

Chamfer



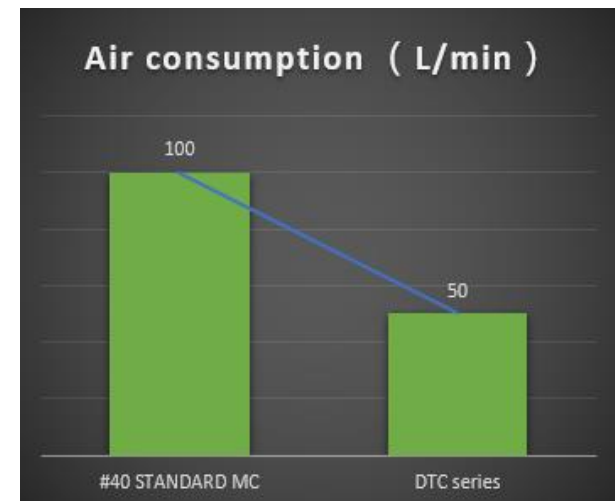
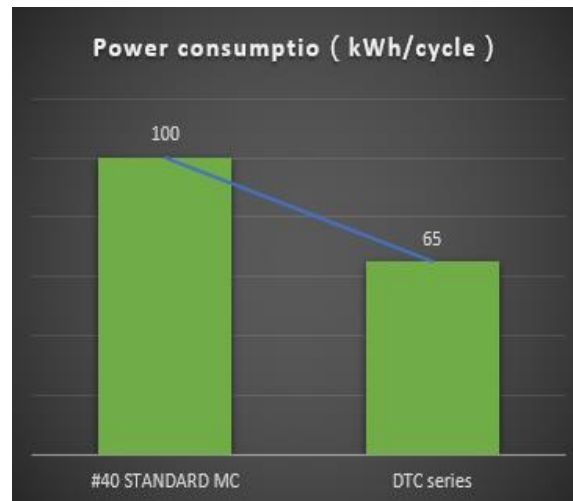
Compared to the #40 model, the DTC Series reduces cycle time by 15% and increases daily (8hour) production by 12%.

Energy Savings:

35% energy 50% air saving

The DTC series is designed with energy efficiency and environmental friendly. Features include:

- Pneumatic source management
- Lightweight structural components to reduce power consumption.
- The grease lubrication system minimizes oil use and environmental impact.

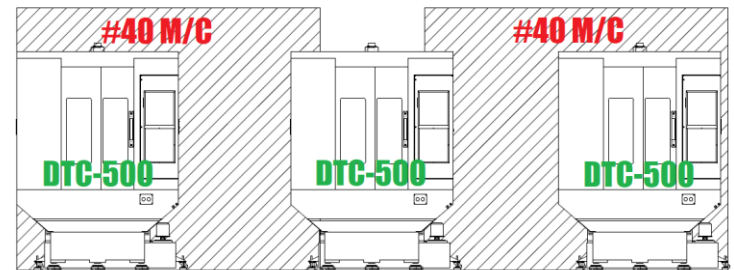
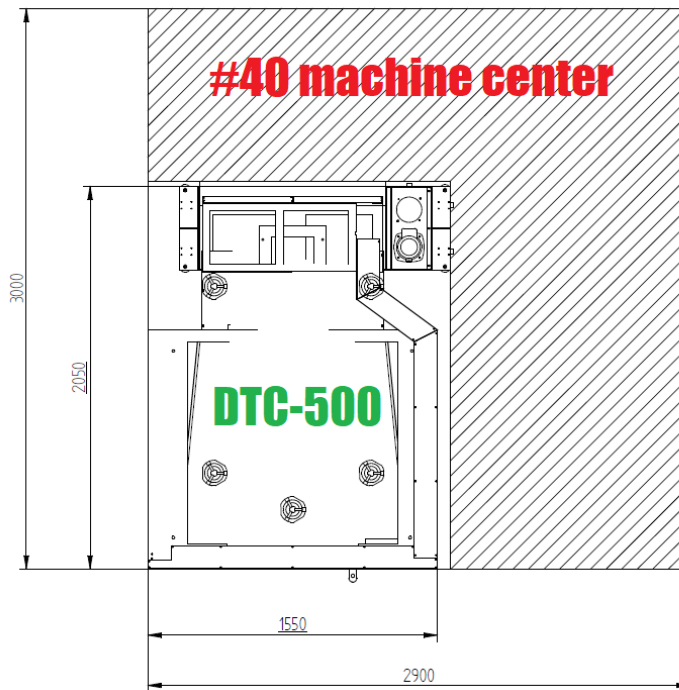


According to onsite testing,
DTC Series can reduces compressed air and power consumption.

Space Savings:

60% more compact

- The footprint is reduced by approximately 60% compared to the #40 standard M/C.
- With the same spacing, the front machine setting ratio is 3:2.



3:2

One-Stop Service: plug and play

Diverse Options

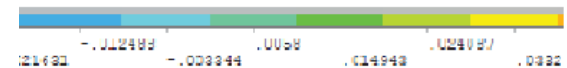
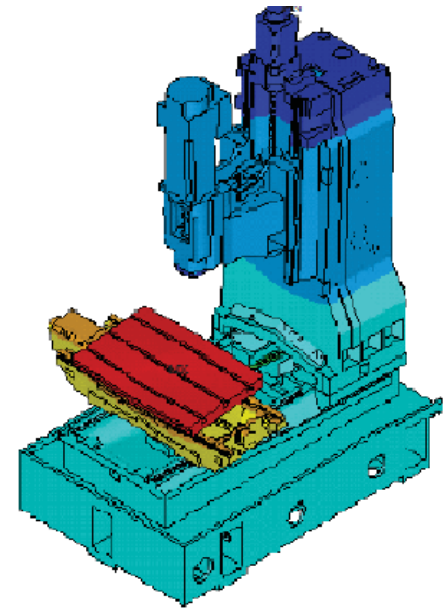
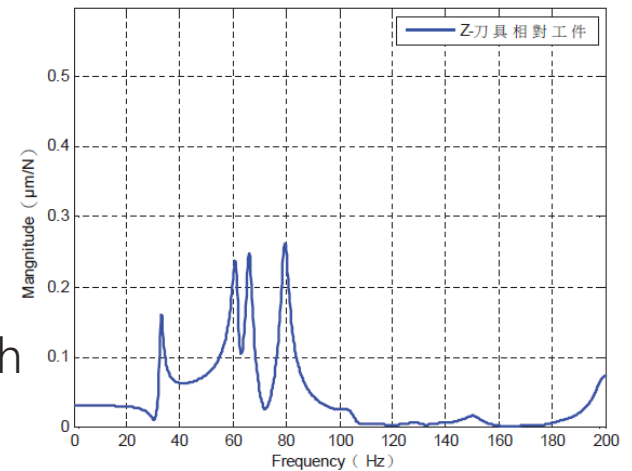
- Jig and Fixture Design.
- Addition of Fourth or Fifth Axis.
- Equipment Modification,
ex .Column height extension、 Auto loading system 、 Auto door ◦



We provide comprehensive integration services, including fixture design, programming, tooling, and other automation solutions.

Structural Rigidity: 15% stronger performance

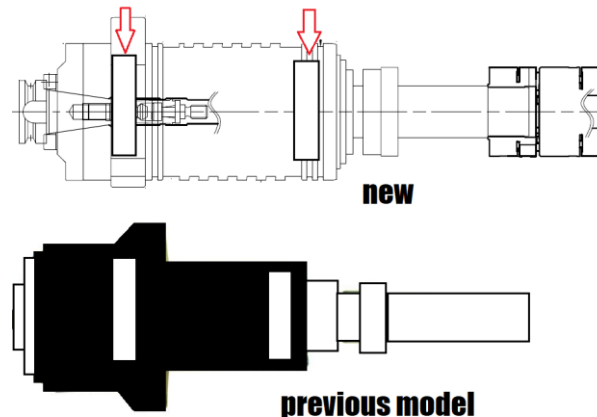
- Designed with Finite Element Analysis (FEA) for the entire machine
- Validated through over 12 scientific tests, including:
 1. Axial static rigidity
 2. Overall machine dynamic rigidity
 3. Modal analysis
 4. Feed system rigidity
- Compared to similar products, 20% weight reduction and 15% rigidity improvement



Component Upgrades:

Better spindle and transmission components

- new, wide-span spindle
- Heavy duty linear guideways, and ball screw system



ball screw	Static rigidity (Kgf/ μ m)	
previous model	7661	100%
new	9690	126.48%

Ball Screw Rigidity Comparison

Quick Payback

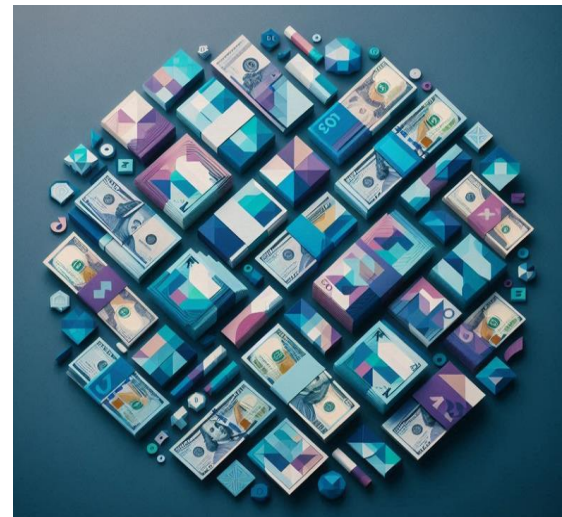
easily reclaim your investment

BeeCNC DTC series is

Ideal for secondary processing, formed metals and mass production workpieces.

Compared to the #40 standard milling machine, the DTC Series offers high speed, low consumption, and low investment cost advantages.

Achieve faster ROI with your equipment investment.



Certifications:

- CE and TS standards
- ISO 14955

Machine tools Environmental evaluation of machine tools

