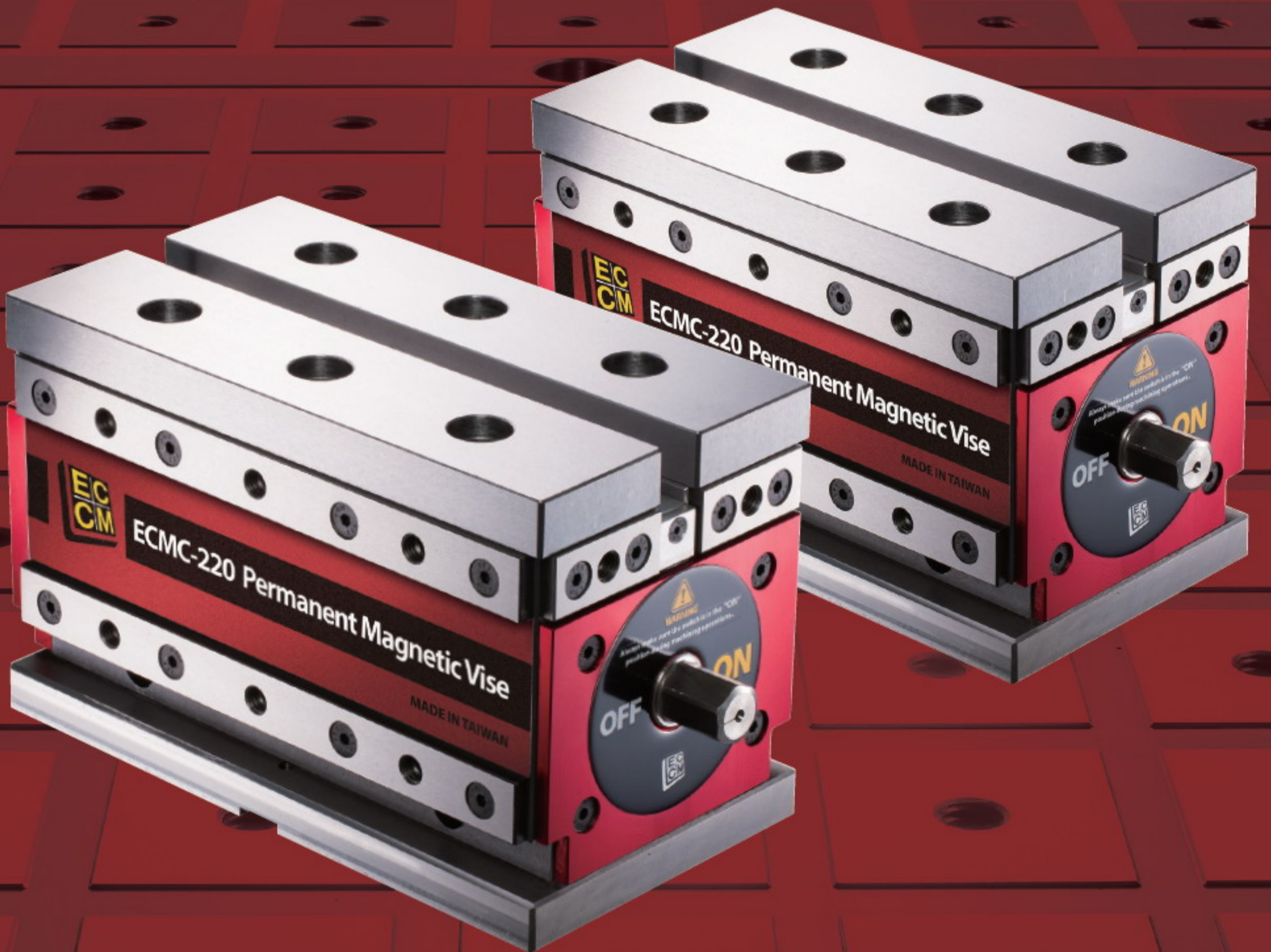


PERMANENT MAGNETIC VISE



Significantly upgrade CNC Machining Centers



恒信工業有限公司
HOMGE
MACHINERY IND. CO., LTD.

永磁式磁力虎鉗

Permanent Magnetic Vise

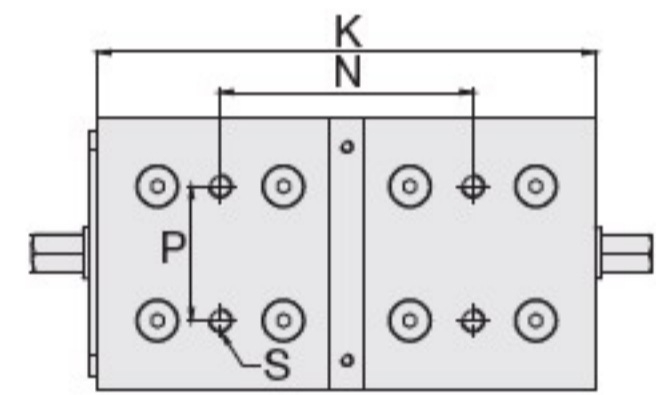
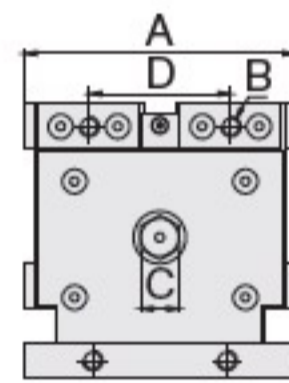
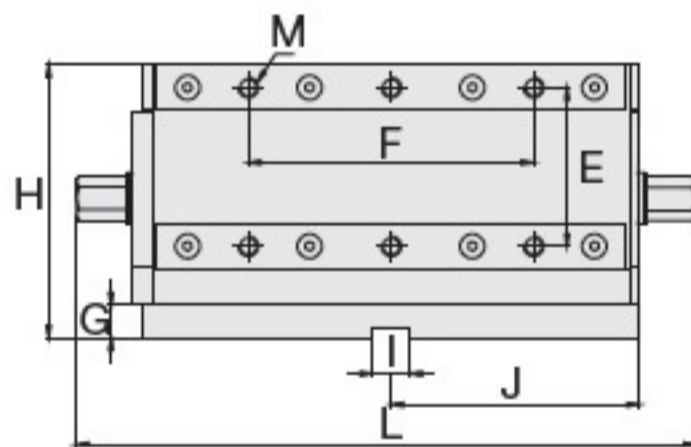
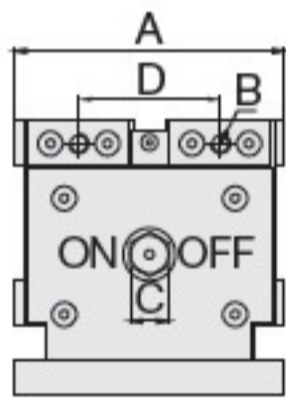
ECMC-380, 220, 130, 75

- Suitable for the magnetic material processing
- Quick clamping the workpiece and provide five-sided processing
- Work with various magnetic soft jaws, flexible adjustment and configuration according to processing needs
- 適用於導磁材料加工
- 快速夾持工件，可做五面切削加工
- 替換性導磁軟爪可做多功能之工件夾持加工



STANDARD ACCESSORIES (標準配件):

- 2 pcs of Stopping Block / 擋板
- 4 pcs of Clamp / 壓板
- 1 pc of Handle / 開關把手
- 2 pcs of Alignment Wedge / 定位鍵



SPECIFICATIONS

Unit: mm

Model	A	B	C	D	E	F	G	H	I	J	K	L
ECMC-380	188	M10	23	92	122	160	18.5	187.5	18	139	278	344
ECMC-220	133	M10	19	69.5	78	140	15	134	18	122	244	305
ECMC-130	108	M8	13	56.5	62	95	12	108	18	99	198	230
ECMC-75	76	M6	13	40	43.5	84	10	78	18	89.5	179	213

Model	M	N	P	S	Holding magnetic force 夾持吸力	Minimum workpiece thickness requirement 最小工件厚度要求	Weight (kg) 重量
ECMC-380	M10	140	90	M12	3300kgf±5%	40	70
ECMC-220	M10	124	66	M12	2100kgf±5%	30	39
ECMC-130	M8	100	48	M10	1200kgf±5%	20	20
ECMC-75	M6	92	38	M8	760kgf±5%	15	10



HOMGE MACHINERY IND. CO., LTD.

Factory: No.287, Sec. 1, Shenlin Rd., Daya Dist., Taichung City 428, Taiwan

Tel: 886-4-2567 2057 . 2566 6158 | Fax: 886-4-2567 2016 . 2568 6099

E-mail: homge@ms22.hinet.net | <http://www.homge.com.tw>

© 2019 COPYRIGHT. HOMGE MACHINERY.

永磁式磁力虎鉗應用範例

Applications:

