

GFA-2W/3W series

Multi Spindle Tilting Rotary Table



G T F A E - 2 1 0 S - 2 W - 3 2 0

Flat supplemental base for standard 3 axis M/C
new optimization model
Five axes
Trunnion type for lower gravity
Worm gear transmission

rotary axis pitch
number of rotary axis
[H] hydraulic brake
[S] Super pneumatic brake
Table size

Worktable diameter Ø125, Ø210, Ø255
Multiple rotary axis allow high volume production and automation integration.

SPECIFICATIONS

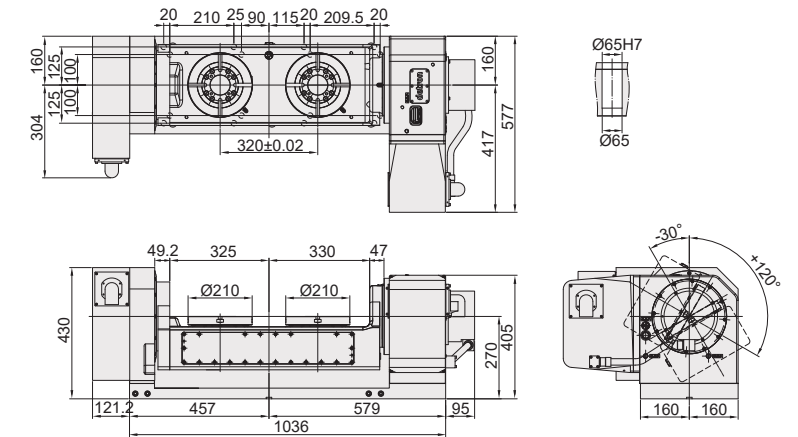
MODEL	Unit	GTF AE-210S-2W-320		GTF AE-255H-2W-400	
Worktable diameter	mm / inch	Ø210 / Ø8.27		Ø255 / Ø10.04	
Center bore diameter	mm / inch	Ø40H7 / Ø1.57H7		Ø40H7 / Ø1.57H7	
Pitch of rotary axis	mm / inch	320 / 12.60		400 / 15.75	
Max. work swing	mm / inch	310 / 12.20		390 / 15.35	
Height of table (horizontal)	mm / inch	270 / 10.63		370 / 14.57	
Height of center (vertical)	mm / inch	270 / 10.63		370 / 14.57	
Width of T-slot	mm / inch	12H7 / 0.47H7		12H7 / 0.47H7	
Width of guide block	mm / inch	18 / 0.71		18 / 0.71	
Drive pressure / method	MPa / psi	pneumatic 0.55~0.7 / 79.8~101.5		hydraulic 5 / 725.0	
Servo motor spec		refer to page 69			
Transmission ratio		R	T	R	T
Max. table speed	min ⁻¹	1/90	1/120	1/90	1/120
Allowable loading capacity	In Horizontal	kg / lb		kg / lb	
	In Tilting (0~90°)	kg / lb		kg / lb	
Allowable unblancing work moment	WxL	Nm / ft. lbs.		Nm / ft. lbs.	
Allowable load (when table clamped)	F	N / lbs		N / lbs	
	FxL	Nm / ft. lbs.		Nm / ft. lbs.	
	FxL	Nm / ft. lbs.		Nm / ft. lbs.	
Allowable loading inertia	$\frac{W \cdot D^2}{8}$	kg.m ²		kg.m ²	
Resolution	sec	0.001		0.001	
Indexing accuracy	sec	20"	60"	20"	60"
Repeatability	sec	6"	8"	6"	8"
Tilting angle range	deg.	-30 ~ +120		-30 ~ +120	
Net weight (servo motor excluded)	Kg/lbs	440 / 970		856 / 1887	
Allowable cutting torque	Nm / ft. lbs.	250 / 184		550 / 405	

Note: R: Rotary Axis T: Tilt Axis

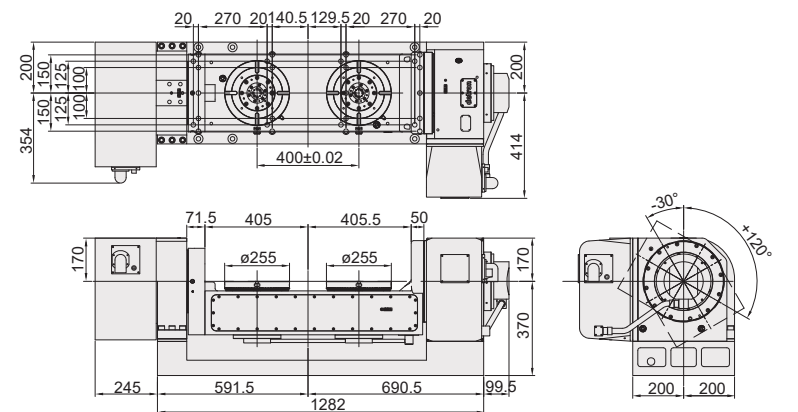
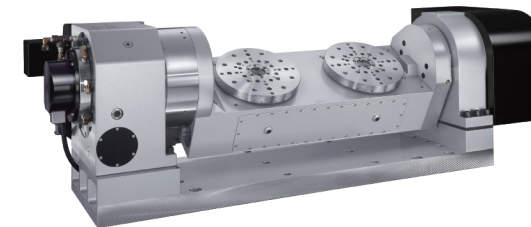
DIMENSIONAL DRAWINGS

Unit : mm

GTF AE-210S-2W-320

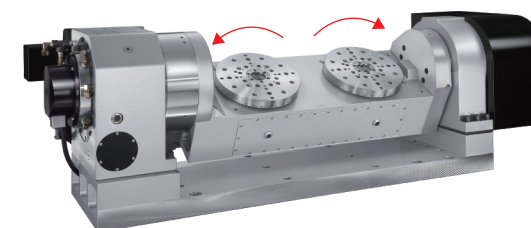


GTF AE-255H-2W-400



Hybrid Drive ▶▶▶

GTF AE-255H-2WS-400



Individual rotations on each axis.

GDTF-500HB-2W-600



Rotary axis by DDM for 50rpm.
Tilting axis by worm wheel transmission.

Note: 1. The length of servo guard may vary with servo motor type. (the metal sheet dimensions shown at above are based on Fanuc motor)
2. Allowable wheel torque at table speed of 1 min⁻¹.
3. According to application engineering, optical encoder is recommended for tilting axis.