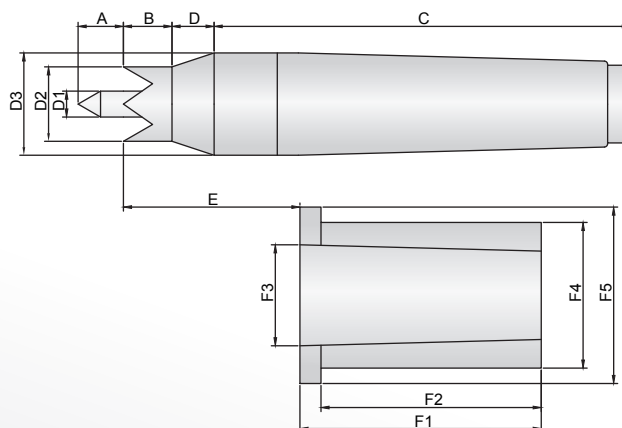
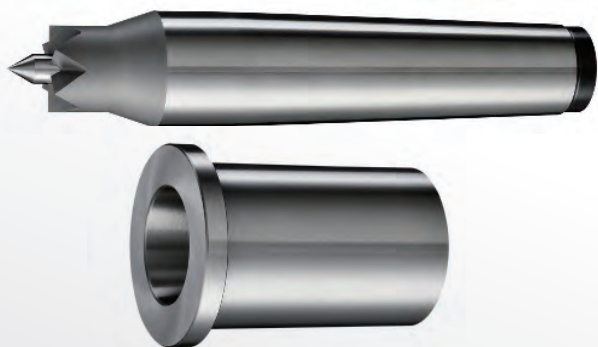


DK

型

WORK-DRIVING CENTER - FIXED UP



1. 此型頂針因機械之結構，故障率低。經深冷熱處理 (HRC60°±1°)
2. 本體端面6T及8T之設計來頂住加工之端面，免用傳動夾，使加工更為方便、速度更快
3. 滾齒機械可適用
4. 精度: 0.008mm

1. Body and center shaft are made of alloy steel with heat and sub-zero treatment.
※ **Hardened : HRC60°±1°.**
2. Driving centers are either with 6 teeth or 8 teeth design for superseding the driving dogs. It supports the workpiece on the surface for easy setup and rapid machining.
3. Applicable for gear hobbing machine.
4. Accuracy : 0.008mm

※由於手工測量，尺寸與實際產品尺寸略有不同，並非瑕疵。

The size is slightly different from the actual product size due to the manual measurement, which is not a defect.

單位/Unit:mm

ORDER NO.	MORSE TAPER MT/MK	A	B	C	D1	D2	D3	工作範圍 Working Range
08090015	DK15-MT.4	14	15	128.5	Φ6	16	31.6	Φ16-Φ25
08090023	DK23-MT.4	14	15	128.5	Φ8	23	31.6	Φ23-Φ32
08090032	DK32-MT.4	14	15	128.5	Φ8、Φ14	31.6	31.6	Φ32-Φ45

選購附件 (Optional accessory)

套筒 SLEEVE	E	F1	F2	F3	F4	F5
	54.5	74.5	68	31.2	45	54.5