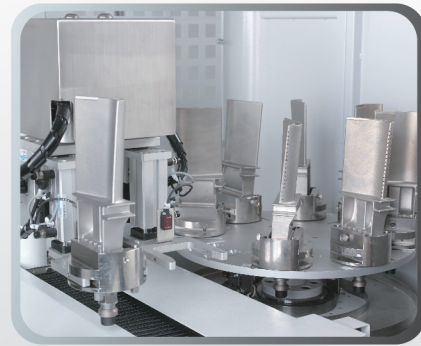


CNC Drilling EDM

River 600

Auto Work-piece Changer System



Flushing Type



Submerge Type

Extraordinary Features

- High performance Ocean Technology Controller.
- High efficient linear guide ways.
- Optional 12-station Automatic Tool Changer.
- Optional 4 or 8-block Automatic Guide Changer.
- Standard with Flushing type. (Optional: Submerge type)
- Breakthrough function (Optional)

River 350

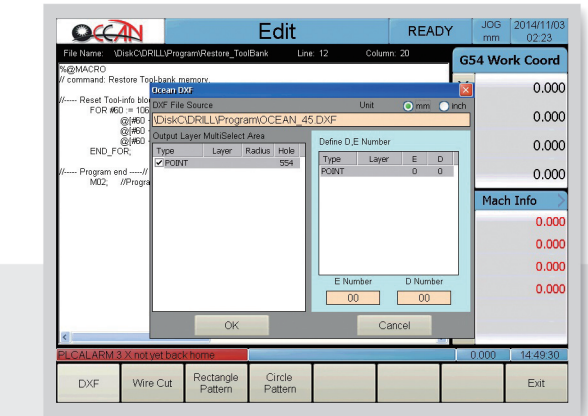
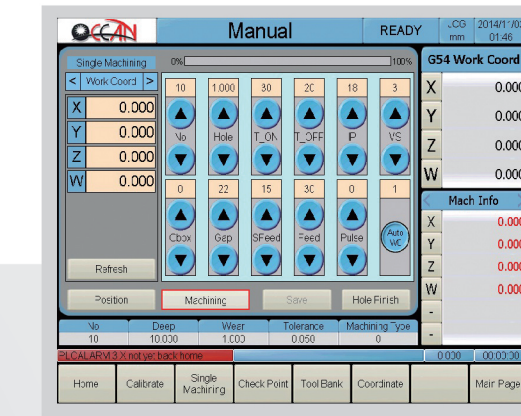
3 Axes CNC



River 300



High Performance Ocean Technology Controller



Compact Hardware and High Quality Human-Machine Interface

- 15" TFT LCD touch operation panel
- 4 axes closed-loop control (6 axes optional)
- SDRAM : 256MB, CF card 256*2 pcs
- USB storage interface

Machining Program Edit

- G/M code capacity limited 8MB (file 190,000 block)
- In load, insert, delete, save, search, copy, etc. functions
- Program simulation (for RIVER 400 & RIVER 600)
- Wire cut file transfer to NC program function
- Point coordinate input function from DXF file
- Special modular edit (circle pattern, rectangle pattern)

Machining Parameter Setting

- Machining condition library
- Machining condition table
- Machining deep table

Manual Function

- Home search
- Calibrate
- Auto edge search
- Auto centering of two points
- Auto centering of circles
- Jog function (incremental, continuous , no-guard)

NC Function

- 4 axes closed loop control (for RIVER 400 & RIVER 600)
- Servo feed rate control
- Auto Electrode Change
- Auto Guide Change
- Auto compensation of replacement new electrode
- Pitch error compensation
- Interrupt point and start point restart
- Multi-Language change
- Inch and Metric change
- Emg-Stop during precession
- Choice Program fulfill (choice range machining)
- Program machining start, pause, reset function
- Sub program
- Revised parameter during machining
- Work path display (for RIVER 400 & RIVER 600)
- Record and Show out machining time
- Software limit protect
- Dry running
- Auto error diagnose system
- Program machining rotating
- Mirror function

Machining Way

- Single hole machining and position.
- Multi-hole machining
- Single block machining ,auto machining

Coordinate Display

- Machine coordinate
- Work coordinate
- Relative coordinate