

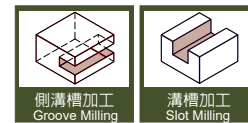
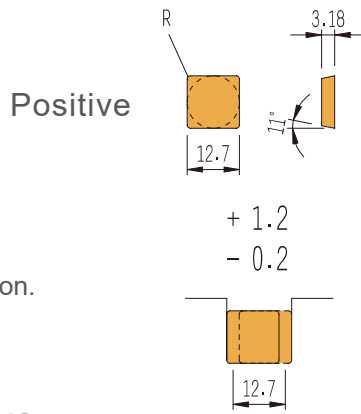
側銑刀

SIDE MILLS

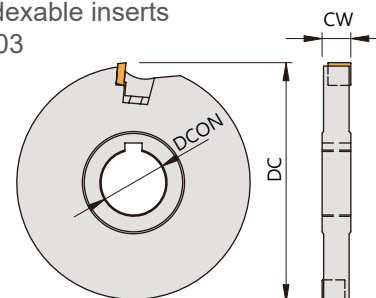
MR
Since 1976



TSSP4



For indexable inserts
SP 1203



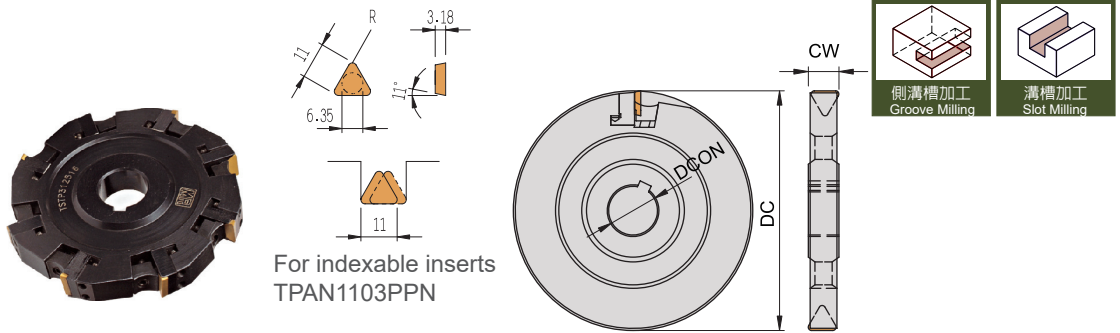
- ◎ Machine ste◎Cast iron. Non-ferrous application.
- ◎ General purpose cutter.
- ◎ Can be used as double side mills.
- ◎ Can be adjustable for -0.2mm to +1.2mm
- ▼ Recommended Inserts 刀片建議品牌: SUMITOMO

Order No.	Insert	Dimensions(mm)					Insert Clamp	Locking Screw	Clamp Screw	Wrench
Right / Left		刀徑 DC	切寬 CW	孔徑 DCON	孔徑 DCON(inch)	刃數 I No.				
TSSP410016	SP..1203	100	16	27	1"	8	CP50-9	CS7-6016	CS70-7	LW020 LW025 LW030
TSSP410018		100	18	27	1"	8				
TSSP412516		125	16	32	1-1/4"	12				
TSSP412518		125	18	32	1-1/4"	12				
TSSP412520		125	20	32	1-1/4"	12				
TSSP416016		160	16	32	1-1/4"	16				
TSSP416018		160	18	32	1-1/4"	16				
TSSP416020		160	20	32	1-1/4"	16				
TSSP417516		175	16	40	1-1/2"	18				
TSSP417518		175	18	40	1-1/2"	18				
TSSP417520		175	20	40	1-1/2"	18				
TSSP420016		200	16	40	1-1/2"	20				
TSSP420018		200	18	40	1-1/2"	20				
TSSP420020		200	20	40	1-1/2"	20				
TSSP425016		250	16	50	2"	24				
TSSP425018		250	18	50	2"	24				
TSSP425020		250	20	50	2"	24				

▼ Inserts刀片:
●: Stock / ◎: 1st Choice, ○: 2nd Choice, X: Not Recommend

Tolerance Class 精度	P	鋼 Carbon Steels		◎					
	M	不鏽鋼 Stainless Steels			◎				
M級	K	鑄鐵 Cast Iron	◎						
Specification 規格			Grade 材質			Dimensions(mm) 尺寸			
			AK201	AP251	TM351	IC	t	α	r
SPMN120308			●	●	●	12.7	3.18	11	0.8

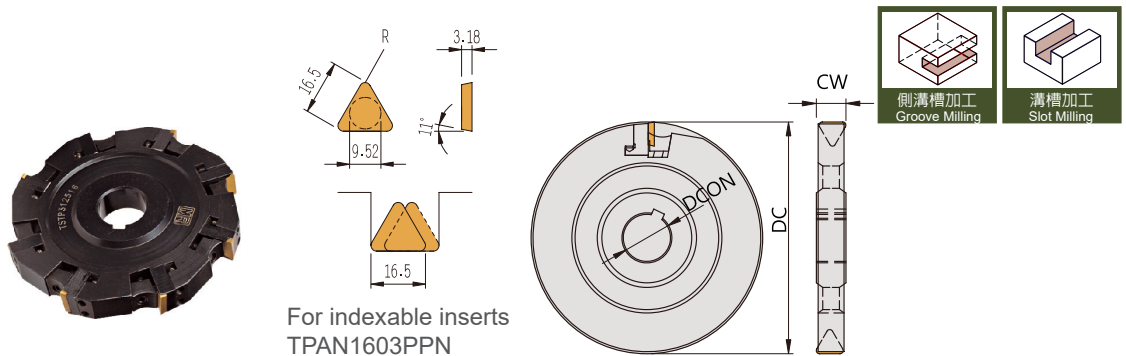
TSTP2



▼Recommended Inserts 刀片建議品牌: KENNAMETAL & WIDIA

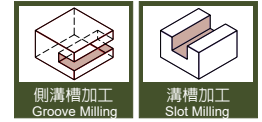
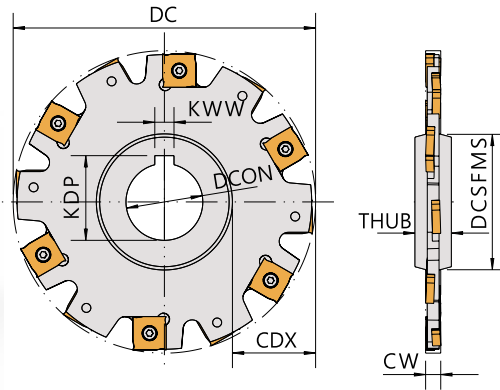
Order No.	Insert	Dimensions(mm)					Locator		Locator Screw	Clamp	Clamp Screw	Wrench
		刀徑 DC	切寬 CW	孔徑 DCON		刃數 I No.	(R)	(L)				
TSTP208012	TP..1103	80	12	27	1"	6	TSL60-12	TSL60-13	CS9-3003 CS9-3006	CP50-6	CS7-6016	LW030 LW015
TSTP210012		100	12	27	1"	8						
TSTP212512		125	12	32	1-1/4"	10						
TSTP216012		160	12	32	1-1/4"	12						

TSTP3



▼Recommended Inserts 刀片建議品牌: KENNAMETAL & WIDIA

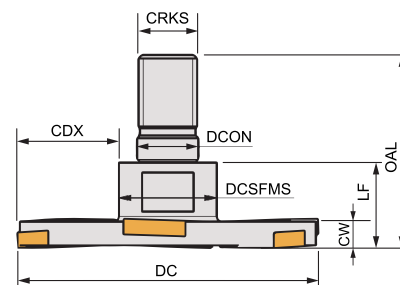
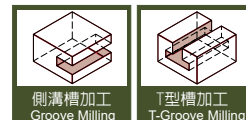
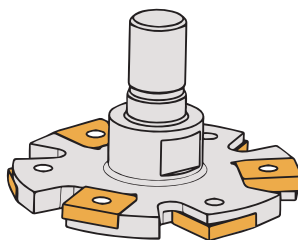
Order No.	Insert	Dimensions(mm)					Locator		Locator Screw	Clamp	Clamp Screw	Wrench
		刀徑 DC	切寬 CW	孔徑 DCON		刃數 I No.	(R)	(L)				
TSTP310016	TP..1603	100	16	27	1"	6	TSL60-14	TSL60-15	CS9-4003 CS9-4012	CP50-9	CS7-6016	LW030 LW020
TSTP310018		100	18	27	1"	6						
TSTP312516		125	16	32	1-1/4"	8						
TSTP312518		125	18	32	1-1/4"	8						
TSTP312520		125	20	32	1-1/4"	8						
TSTP316016		160	16	32	1-1/4"	10						
TSTP316018		160	18	32	1-1/4"	10						
TSTP316020		160	20	32	1-1/4"	10						
TSTP320018		200	18	40	1-1/2"	12						
TSTP320020		200	20	40	1-1/2"	12						
TSTP325018		250	18	50	2"	16						
TSTP325020		250	20	50	2"	16						



- ▼The biggest diameter 最大尺寸: 350mm
- ▼The specifications can be customized 規格可接受訂製

Order No.	Insert	Dimensions(mm)								Clamp Screw	Wrench
		刀徑	最大切深	厚度	切寬	夾持接觸面直徑	孔徑		刃數		
Right / Left		DC	CDX	THUB	CW	DCSFMS	DCON	DCON(inch)	I No.		
TSSN11020-08004	SNHX1102	80	18	12	4	44	27	1"	10	CSA30035S	DT-7
TSSN11020-10004		100	27	12	4	45	27	1"	12		
TSSN11020-12504		125	33	12	4	58	40	1-1/2"	14		
TSSN11020-16004		160	46	12	4	68	40	1-1/2"	18		
TSSN11030-08005	SNHX1103	80	18	12	5	44	27	1"	10	CSA30042	DT-7
TSSN11030-10005		100	27	12	5	45	27	1"	12		
TSSN11030-12505		125	33	12	5	55	40	1-1/2"	14		
TSSN11030-16005		160	46	12	5	68	40	1-1/2"	18		
TSSN12030-10006	SNHX1203	100	27	12	6	45	27	1"	10	CSA40051	DT-15
TSSN12030-12506		125	33	12	6	55	40	1-1/2"	12		
TSSN12030-16006		160	46	12	6	68	40	1-1/2"	16		
TSSN12030-20006		200	61	12	6	78	50	2"	18		
TSSN12030-25006		250	82	12	6	86	50	2"	24		
TSSN12040-10007	SNHX1204	100	27	12	7	45	27	1"	10	CSA40059	DT-15
TSSN12040-12507		125	33	12	7	55	40	1-1/2"	12		
TSSN12040-16007		160	46	12	7	68	40	1-1/2"	16		
TSSN12040-20007		200	61	12	7	78	50	2"	18		
TSSN12040-25007		250	82	12	7	86	50	2"	24		
TSSN12050-10010	SNHX1205	100	27	12	10	45	27	1"	10	CSA40079	DT-15
TSSN12050-12510		125	33	12	10	55	40	1-1/2"	12		
TSSN12050-16010		160	46	12	10	68	40	1-1/2"	16		
TSSN12050-20010		200	61	12	10	78	50	2"	18		
TSSN12050-25010		250	82	12	10	86	50	2"	24		

MICSN
鎖牙式側銑刀



- ▼ Recommended Inserts 刀片建議品牌: ACC
- ▼ The smallest diameter 最小尺寸: 40mm
- ▼ The specifications can be customized 規格可接受訂製

Insert type 適用刀片: SNHX1102

Order No.	Dimensions(mm)									Clamp Screw	Wrench
	刀徑 DC	切寬 CW	最大切深 CDX	夾持接觸面直徑 DCSFMS	孔徑 DCON	螺紋 CRKS	長度 LF	總長 OAL	刃數 I No.		
MICSN04004	40	4	12	12	8.5	M8	15.5	17	4	CSA30035S	FT-7
MICSN05004	50	4	16	16	10.5	M10	15.5	19	6		
MICSN06304	63	4	20	20	12.5	M12	15.5	22	8		
MICSN08004	80	4	26	25	17	M16	15.5	23	10		

Insert type 適用刀片: SNHX1103

MICSN04005	40	5	12	12	8.5	M8	16.5	17	4	CSA30042	FT-7
MICSN05005	50	5	16	16	10.5	M10	16.5	19	6		
MICSN06305	63	5	20	20	12.5	M12	16.5	22	8		
MICSN08005	80	5	26	25	17	M16	16.5	23	10		

Insert type 適用刀片: SNHX1203

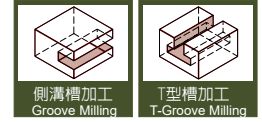
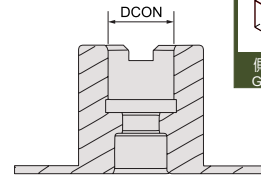
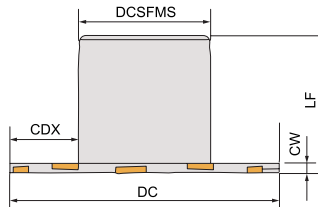
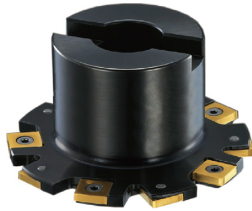
MICSN05006	50	6	16	16	10.5	M10	17.5	19	4	CSA40051	FT-15
MICSN06306	63	6	20	20	12.5	M12	17.5	22	6		
MICSN08006	80	6	26	25	17	M16	17.5	23	8		

Insert type 適用刀片: SNHX1204

MICSN05007	50	7	16	16	10.5	M10	18.5	19	4	CSA40059	FT-15
MICSN06307	63	7	20	20	12.5	M12	18.5	22	6		
MICSN08007	80	7	26	25	17	M16	18.5	23	8		

Insert type 適用刀片: SNHX1205

MICSN05010	50	10	16	16	10.5	M10	19.5	19	4	CSA40079	FT-15
MICSN06310	63	10	20	20	12.5	M12	19.5	22	6		
MICSN08010	80	10	26	25	17	M16	19.5	23	8		



▼Recommended Inserts 刀片建議品牌:ACC
 ▼The specifications can be customized 規格可接受訂製
 Insert type 適用刀片: SNHX1102

Order No.	Dimensions(mm)								Clamping Screw	Wrench	
	Right / Left	刀徑 DC	切寬 CW	最大切深 CDX	長度 LF	夾持接觸面直徑 DCSFMS	孔徑 DCON	刃數 I No.			
NTSSN08004		80	4	19	40	40	22	-	10	CSA30035S	FT-7
NTSSN10004		100	4	25	40	48	27	1"	12		
NTSSN12504		125	4	32	50	58	32	1-1/4"	14		
NTSSN16004		160	4	45	50	70	40	1-1/2"	18		
NTSSN20004		200	4	55	50	88	40	1-1/2"	20		

Insert type 適用刀片: SNHX1103

NTSSN08005	80	5	19	40	40	22	-	10	CSA30042	FT-7
NTSSN10005	100	5	25	40	48	27	1"	12		
NTSSN12505	125	5	32	50	58	32	1-1/4"	14		
NTSSN16005	160	5	45	50	70	40	1-1/2"	18		
NTSSN20005	200	5	55	50	88	40	1-1/2"	20		

Insert type 適用刀片: SNHX1203

NTSSN08006	80	6	19	40	40	22	-	8	CSA40051	FT-15
NTSSN10006	100	6	25	40	48	27	1"	10		
NTSSN12506	125	6	32	50	58	32	1-1/4"	12		
NTSSN16006	160	6	45	50	70	40	1-1/2"	16		
NTSSN20006	200	6	55	50	88	40	1-1/2"	18		

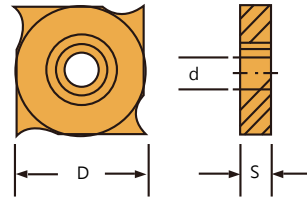
Insert type 適用刀片: SNHX1204

NTSSN08007	80	7	19	40	40	22	-	8	CSA40059	FT-15
NTSSN10007	100	7	25	40	48	27	1"	10		
NTSSN12507	125	7	32	50	58	32	1-1/4"	12		
NTSSN16007	160	7	45	50	70	40	1-1/2"	16		
NTSSN20007	200	7	55	50	88	40	1-1/2"	18		

Insert type 適用刀片: SNHX1205

NTSSN08010	80	10	19	40	40	22	-	8	CSA40079	FT-15
NTSSN10010	100	10	25	40	48	27	1"	10		
NTSSN12510	125	10	32	50	58	32	1-1/4"	12		
NTSSN16010	160	10	45	50	70	40	1-1/2"	16		
NTSSN20010	200	10	55	50	88	40	1-1/2"	18		

SNHX
側銑刀片

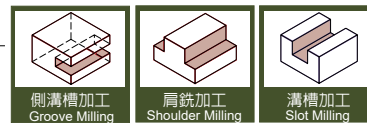
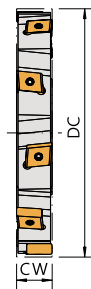
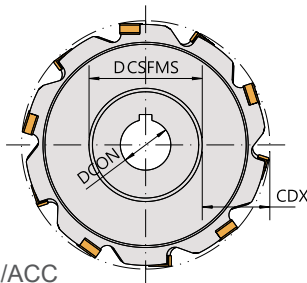
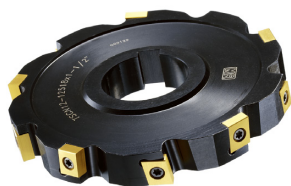


▼ Inserts刀片:

●: Stock / ◎: 1st Choice, ○: 2nd Choice, X: Not Recommend

P	鋼 Carbon Steels	○				◎		
M	不鏽鋼 Stainless Steels	○			◎			
K	鑄鐵 Cast Iron	◎						
N	鋁合金 Aluminum Alloys			◎				
S	高溫合金 Superalloys	○						
Specification 規格	Dimensions(mm) 尺寸			Grade 材質				Clamping Screw
Insert	s	D	d	AK100/ AK101	K110M	TM150	TH200	
SNHX1102-G/-H	2.3	11.0	4	●	●	●	●	CSA30035
SNHX1103-G/-H	2.7	11.0	5	●				CSA30042
SNHX11032-G/-H	3.2	11.0	5.5/6			●		CSA30042
SNHX1203-G/-H	3.2	12.7	6	●	●		●	CSA40051
SNHX1204-G/-H	4.0	12.7	7					CSA40059
SNHX12045-G/-H	4.5	12.7	7.5/8					CSA40069
SNHX1205-G/-H	5.4	12.7	10	●	●		●	CSA40089
SNHX1207-G/-H	7.0	12.7	12				●	CSA40105

-G : general cutting -H : heavy cutting



▼Recommended Inserts 刀片建議品牌:KENNAMETAL/ACC

▼The specifications can be customized 規格可接受訂製

Insert: CNHU1005

Acceptable Customized Thickness 可訂製厚度: 12~18 mm

Order No.	Dimensions(mm)						
	刀徑 DC	切寬 CW	最大切深 CDX	夾持接觸面直徑 DCSFMS	孔徑 DCON		刃數 I No.
TSCN10-08014	80	14	18	44	27	1"	6
TSCN10-10014	100	14	26	48	27	1"	8
TSCN10-12514	125	14	35	55	32	1-1/4"	10
TSCN10-16014	160	14	46	68	40	1-1/2"	12
TSCN10-20014	200	14	61	78	50	2"	16
TSCN10-25014	250	14	82	86	50	2"	20

Insert: CNHU1205

Acceptable Customized Thickness 可訂製厚度: 15~22 mm

Order No.	Dimensions(mm)						
	刀徑 DC	切寬 CW	最大切深 CDX	夾持接觸面直徑 DCSFMS	孔徑 DCON		刃數 I No.
TSCN12-08018	80	18	18	44	27	1"	6
TSCN12-10018	100	18	26	48	27	1"	8
TSCN12-12518	125	18	35	55	32	1-1/4"	10
TSCN12-16018	160	18	46	68	40	1-1/2"	12
TSCN12-20018	200	18	61	78	50	2"	16
TSCN12-25018	250	18	82	86	50	2"	20

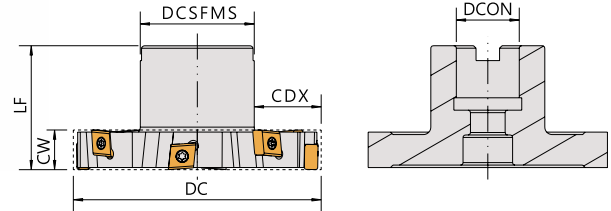
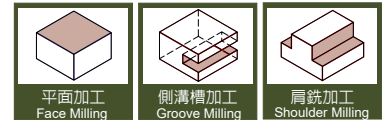
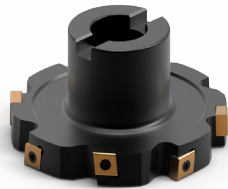
Insert: CNHU1606

Acceptable Customized Thickness 可訂製厚度: 20~29 mm

Order No.	Dimensions(mm)						
	刀徑 DC	切寬 CW	最大切深 CDX	夾持接觸面直徑 DCSFMS	孔徑 DCON		刃數 I No.
TSCN16-08022	80	22	18	44	27	1"	6
TSCN16-10022	100	22	26	48	27	1"	8
TSCN16-12522	125	22	35	55	32	1-1/4"	10
TSCN16-16022	160	22	46	68	40	1-1/2"	12
TSCN16-20022	200	22	61	78	50	2"	16
TSCN16-25022	250	22	82	86	50	2"	20

Order example: TSCN10-08014 x1"

ap (mm)	Insert	L (mm)	Screw	Wrench
13 ~ 17	CNHU1005 / CNHQ1005	10.0	CS40110	DT-15
17 ~ 21	CNHU1205 / CNHQ1205	12.7	CS40110	DT-15
21 ~ 30	CNHU1606 / CNHQ1606	16.0	CS50130	DT-20



▼ Recommended Inserts 刀片建議品牌: KENAMETAL

Insert: CNHU1005

Acceptable Customized Thickness 可訂製厚度: 12~18 mm

Order No.	Dimensions(mm)							
	刀徑 DC	切寬 CW	最大切深 CDX	長度 LF	夾持接觸面直徑 DCSFMS	孔徑 DCON		刃數 I No.
NTSCN10-08016	80	16	15	50	48	27	1"	6
NTSCN10-10016	100	16	25	50	48	27	1"	8
NTSCN10-12516	125	16	32	50	58	32	1-1/4"	10
NTSCN10-16016	160	16	43	50	70	40	1-1/2"	12
NTSCN10-20016	200	16	55	50	88	40	1-1/2"	16
NTSCN10-25016	250	16	68	50	112	60	2"	20

Insert: CNHU1205

Acceptable Customized Thickness 可訂製厚度: 15~22 mm

Order No.	Dimensions(mm)							
	刀徑 DC	切寬 CW	最大切深 CDX	長度 LF	夾持接觸面直徑 DCSFMS	孔徑 DCON		刃數 I No.
NTSCN12-08020	80	20	15	50	48	27	1"	6
NTSCN12-10020	100	20	25	50	48	27	1"	8
NTSCN12-12520	125	20	32	50	58	32	1-1/4"	10
NTSCN12-16020	160	20	43	50	70	40	1-1/2"	12
NTSCN12-20020	200	20	55	50	88	40	1-1/2"	16
NTSCN12-25020	250	20	68	50	112	60	2"	20

Insert: CNHU1606

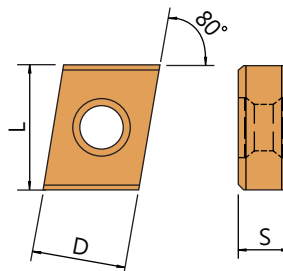
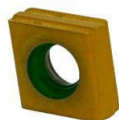
Acceptable Customized Thickness 可訂製厚度: 20~29 mm

Order No.	Dimensions(mm)							
	刀徑 DC	切寬 CW	最大切深 CDX	長度 LF	夾持接觸面直徑 DCSFMS	孔徑 DCON		刃數 I No.
NTSCN16-08024	80	24	15	50	48	27	1"	6
NTSCN16-10024	100	24	25	50	48	27	1"	8
NTSCN16-12524	125	24	32	50	58	32	1-1/4"	10
NTSCN16-16024	160	24	43	50	70	40	1-1/2"	12
NTSCN16-20024	200	24	55	50	88	40	1-1/2"	16
NTSCN16-25024	250	24	68	50	112	60	2"	20

Order example: NTSCN10-08014x1"

Type	Insert	Screw	Wrench
NTSCN10	CNHU1005	CS40110	DT-15
NTSCN12	CNHU1205	CS40110	DT-15
NTSCN16	CNHU1606	CS50130	DT-20

CNHU
側銑刀片



▼ Inserts刀片:

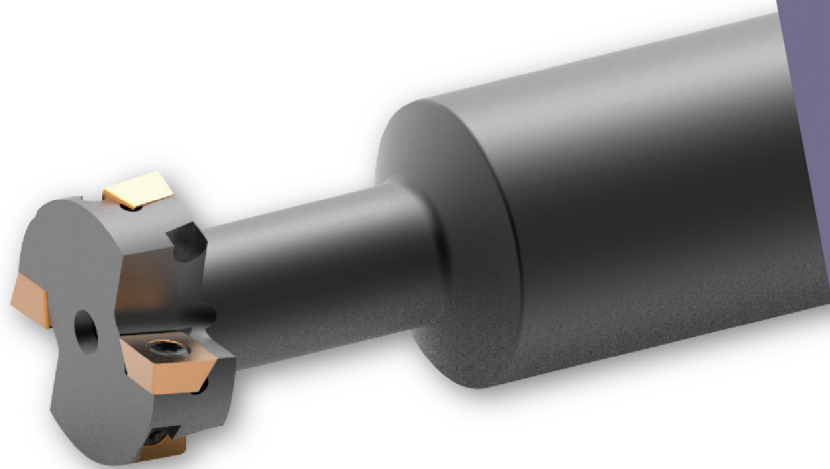
●: Stock / ◎: 1st Choice, ○: 2nd Choice, X: Not Recommend

P	鋼 Carbon Steels	○		◎				
M	不鏽鋼 Stainless Steels	○	◎					
K	鑄鐵 Cast Iron	◎						
N	鋁合金 Aluminum Alloys							
S	高溫合金 Superalloys	○						
Specification 規格	Dimensions(mm) 尺寸					Grade 材質		
Insert	L	D	S	r	c	AK100	TM150	TH200
CNHU1005	10.00	10.06	5.4	-	0.2		●	
CNHU1005R04	10.00	10.06	5.4	0.4	-	●	●	
CNHU1005R08	10.00	10.06	5.4	0.8	-	●	●	
CNHU1005R16	10.00	10.06	5.4	1.6	-		●	
CNHU1205	12.70	10.06	5.4	-	0.2			
CNHU1205R04	12.70	10.06	5.4	0.4	-	●		
CNHU1205R08	12.70	10.06	5.4	0.8	-	●	●	
CNHU1205R12	12.70	10.06	5.4	1.2	-	●		
CNHU1205R16	12.70	10.06	5.4	1.2	-			
CNHU1205R36	12.70	10.06	5.4	3.6	-	●		
CNHU1606	16.00	12.06	5.4	-	0.2		●	
CNHU1606R08	16.00	12.06	5.4	0.8	-		●	
CNHU1606R16	16.00	12.06	5.4	1.6	-		●	
CNHU1606R24	16.00	12.06	5.4	2.4	-			
CNHU1606R32	16.00	12.06	5.4	3.2	-			
CNHX1005R	10.00	10.06	5.4	-	0.2		●	
CNHX100504R	10.00	10.03	5.4	0.4	-			
CNHX100508R	10.00	10.06	5.4	0.8	-		●	
CNHU100516R	10.00	10.06	5.4	1.6	-		●	

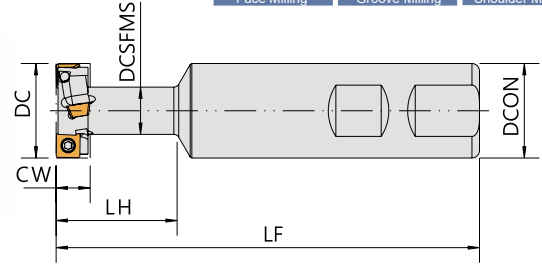
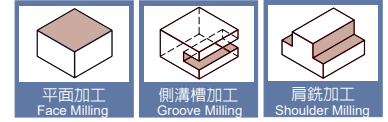
CNHU : TSCN side milling CNHX : F90CN10 shell end milling / face milling

T型銑刀

SIDE MILLS



ETS
T型銑刀

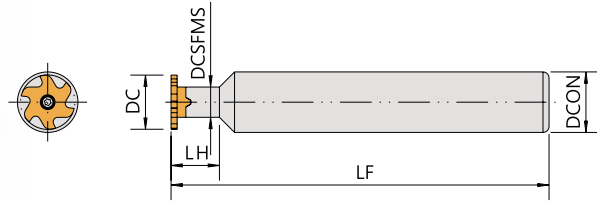
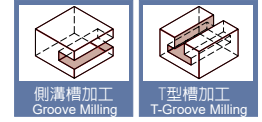


T-SLOT END MILLS

▼ Recommended Inserts 刀片建議品牌: KYOCERA & KENAMETAL

Order No.	Insert	Dimensions(mm)							Parts	Wrench
		刀徑 DC	柄徑 DCON	裝夾接觸面直徑 DCSFMS	切寬 CW	長度 LF	頭長 LH	刃數 I No.		
ETS2008-S25	SDMT060304E-K	20	25	10.5	8	109	29	2	CS25065	DBIT-T8
ETS2009-S25		20	25	11.5	9	109	30	2		
ETS2109-S25		21	25	10.5	9	109	29	2		
ETS2209-S25		22	25	12.5	9	109	29	2		
ETS2210-S25		22	25	12	10	109	30	2		
ETS2410-S25		24	25	12	10	109	30	2		
ETS2509-S25		25	25	12.5	9	112	32	4		
ETS2511-S25		25	25	12.5	11	112	32	4		
ETS3011-S25		30	25	15.5	11	120	38	4		
ETS3014-S25	SDMT080308E-K	30	25	15.5	14	120	38	4	CS30070	DBIT-T10
ETS3214-S32		32	32	15.5	14	120	38	4		
ETS4018-S32	SDMT120408E-K	40	32	20.5	18	130	50	4	CS40090	DBIT-T15
ETS5022-S32		50	32	26.5	22	140	60	4		

EM618
T型銑刀



▼ Recommended Inserts 刀片建議品牌: ACC

Order No.	Insert	Dimensions(mm)					Parts	Wrench
		刀徑	裝夾接觸面直徑	柄徑	長度	頭長		
Right / Left		DC	DCSFMS	DCON	LF	LH		
EM618-S12-100	M618	17.7	9	12	100	12	CS4012P	DBIT-T15
EM618-S16-125		17.7	9	16	125	16		

▼ Inserts刀片:

●: Stock / ◎: 1st Choice, ○: 2nd Choice, X: Not Recommend

Tolerance Class 精度	P	鋼 Carbon Steels	◎	○		
	M	不鏽鋼 Stainless Steels	◎	○		
M級	K	鑄鐵 Cast Iron	◎	◎		
Specification 規格		Grade 材質		Dimensions(mm) 尺寸		
Insert		RK100	AK100	ap	T	ae
M618.150.00		●	●	1.5	4.9	3
M618.200.00		●	●	2.0	4.9	3
M618.250.00		●	●	2.5	4.9	3
M618.300.00		●	●	3.0	4.9	3