

# OPTIONAL ACCESSORIES



Electro Magnetic Chuck



Auto-Parallel Dressing Attachment 2 Axes Full Auto (Electrical Cross+Step Control Down)  
※With the Exception of PSGO Series



Cross / Vertical Micrometer Attachment (PSGS-2550AH, 3060BH, 4080AHR)



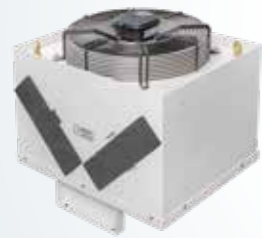
Radius and Angle Dresser (PSGS)



Parallel Dressing Attachment (Manual Type for PSGS, PSGC)  
※With the Exception of PSGS-1535M, 1545M, 2045M



Parallel Dressing Attachment (PSGO)



Oil Mist Collector



Level Type Wheel Balancer



Wheel Flange



Window Type Splash Guard (PSGS)  
(Cross Travel will shorten 30-50mm)  
Rear Side Coolant Baffle (PSGS)



Dust-Suction Cooling System (PSGS)



Automatic Paper Strip Filter with / without Magnetic Separator



Cooling System



Cooling System with Magnetic Separator



Oil Temperature Control System

# SADDLE SERIES



PSGS - 2045M



PSGS - 4080AHR

•Machines are shown with optional equipments.

SPECIFICATION / MODELS			PSGS					
			1535M	1545M	2045M	2550AH	3060BH	4080AHR
General Capacity	Max.travel(cross×longitudinal)	mm	170x380	175x480	220x485	280x600	340x700	460x900
	Spindle center height from table	mm	420			500	600	
	Max. height from table top to bottom of standard wheel	mm	330			322	422	
	Grinding surface of table	mm	150x350	150x450	200x450	250x500	300x600	400x800
Longitudinal Movement	Hydraulic table speed (60Hz)	m/min	Manual			1-25(0.3-25)		
	Intermittent cross feed-approx. (Electro-mechanical)	mm/feed	Manual			0.1-10		
Cross Movement	Continuous cross feed-approx. (Electro-mechanical) (50/60Hz)	mm/min	Manual			1000		
	Hand feed per revolution	mm	5			4		
	Hand feed per division	mm	0.02					
Vertical Downfeed	Rapid traverse approx.(option)	mm/min	Manual			220		
	Hand feed per revolution	mm	1					
	Hand feed per division	mm	0.005					
Grinding Wheel	Dimension(O.D×W×I.D)	mm	180x13x31.75			355x25x127	355x38x127	
	Spindle speed (50/60Hz)	r.p.m.	3000/3600			1500/1800		
Motor	Spindle motor		1.1kW/1.5HP		1.5kW/2HP	2.2kW/3HP	3.7kW/5HP	3.7(5.6)kW/5(7.5)HP
	Hydraulic motor		Manual			0.75kW/1HP		2.2kW/3HP
Weight	Net weight	kg	670	780	800	1350	1900	2800
	Gross weight	kg	800	1020	1140	1700	2500	3400
Machine Size	Dimension(L×W×H)	m	1x1.15x1.8	1.21x1.18x1.8	1.51x1.57x1.9	1.7x1.87x1.8	1.95x1.95x1.9	2.55x2.1x1.9

- Since we subscribe to a process of continuous improvement for our products, specifications are subject to change without notice.
- Machine appearance will change depending upon different optional equipment selected.
- Equipment marked with ( ) is available at additional extra charge. Other special applications may be provided upon specific requests from customers. Please contact us for more details.
- Machines are shown with optional equipments.

# SADDLE SERIES



•Machines are shown with optional equipments.

PSGS - 4080N

SPECIFICATION / MODELS			PSGS	
			3060N	4080N
General Capacity	Max.travel(cross×longitudinal)	mm	340x700	460x900
	Spindle center height from table	mm	560	
	Max. height from table top to bottom of standard wheel	mm	382	
	Grinding surface of table	mm	300x600	400x800
Longitudinal Movement	Hydraulic table speed	m/min	1-25	
	Intermittent cross feed	mm/feed	0.1-10	
Cross Movement	Continuous cross feed	mm/min	1000	
	MPG feed per revolution		0.1mmx1/x5/x10	
	MPG feed per division		0.001mmx1/x5/x10	
Vertical Downfeed	Rapid traverse approx.(option)	mm/min	300	
	MPG feed per revolution		0.1mmx1/x5/x10	
	MPG feed per division		0.001mmx1/x5/x10	
Grinding Wheel	Dimension(O.D×W×I.D)	mm	355x38x127	
	Spindle speed (50/60Hz)	r.p.m.	1500/1800	
Motor	Spindle motor		3.7kW/5HP	
	Cross servo motor		0.75kW/1HP	
	Vertical servo motor		0.75kW/1HP	
	Hydraulic motor		0.75kW/1HP	2.2kW/3HP
Weight	Net weight	kg	2500	4300
	Gross weight	kg	3000	5000
Machine Size	Dimension(L×W×H)	m	2.91x2.05x2.2	3.5x2.68x1.95

- Since we subscribe to a process of continuous improvement for our products, specifications are subject to change without notice.
- Machine appearance will change depending upon different optional equipment selected.
- Equipment marked with ( ) is available at additional extra charge. Other special applications may be provided upon specific requests from customers. Please contact us for more details.
- Machines are shown with optional equipments.

# COLUMN SERIES



PSGC - 60120AHR

•Machines are shown with optional equipments.

SPECIFICATION / MODELS			PSGC						
			50100AHR	50120AHR	50150AHR	60120AHR	60150AHR	60220AHR	60250AHR
General Capacity	Max.travel(cross×longitudinal)	mm	560x1150	560x1350	560x1650	660x1350	660x1650	660x2350	660x2650
	Spindle center height from table	mm	700						
	Max. height from table top to bottom of standard wheel	mm	522						
	Grinding surface of table	mm	500x1000	500x1200	500x1500	600x1200	600x1500	600x2200	600x2500
Longitudinal Movement	Hydraulic table speed (60Hz)	m/min	1-25						
Cross Movement	Intermittent cross feed-approx. (Electro-mechanical)	mm/feed	0.1-15						
	Continuous cross feed-approx. (Electro-mechanical) (50/60Hz)	mm/min	2000						
	Hand feed per revolution	mm	5						
	Hand feed per division	mm	0.02						
Vertical Downfeed	Rapid traverse approx.(option)	mm/min	400						
	MPG feed per revolution		0.1mmx1/x5/x10						
	MPG feed per division		0.001mmx1/x5/x10						
Grinding Wheel	Dimension(O.D×W×I.D)	mm	355x50x127						
	Spindle speed (50/60Hz)	r.p.m.	1500/1800						
Motor	Spindle motor		7.5(11)kW/10(15)HP						
	Hydraulic motor		3.7kW/5HP						
Weight	Net weight	kg	5800	6100	7000	8200	9300	10800	12500
	Gross weight	kg	6900	7500	8500	9600	10900	13900	15600
Machine Size	Dimension(L×W×H)	m	3.2x2.7x2.96	4x2.7x2.96	4.7x2.7x2.96	4x2.83x2.96	4.7x2.83x2.96	6.2x2.83x2.96	7.2x2.83x2.96

- Since we subscribe to a process of continuous improvement for our products, specifications are subject to change without notice.
- Machine appearance will change depending upon different optional equipment selected.
- Equipment marked with ( ) is available at additional extra charge. Other special applications may be provided upon specific requests from customers. Please contact us for more details.
- Machines are shown with optional equipments.

# COLUMN SERIES



PSGC - 50100E

•Machines are shown with optional equipments.

SPECIFICATION / MODELS			PSGC
			50100E
General Capacity	Max.travel(cross×longitudinal)	mm	560x1150
	Spindle center height from table	mm	700
	Max. height from table top to bottom of standard wheel	mm	522
	Grinding surface of table	mm	500x1000
Longitudinal Movement	Belt-drive table speed	m/min	1-25
Cross Movement	Intermittent cross feed-approx.	mm/feed	0.1-15
	Continuous cross feed-approx.	mm/min	2000
	MPG feed per revolution		0.1mmx1/x5/x10
	MPG feed per division		0.001mmx1/x5/x10
Vertical Downfeed	Rapid traverse approx.	mm/min	500
	MPG feed per revolution		0.1mmx1/x5/x10
	MPG feed per division		0.001mmx1/x5/x10
Grinding Wheel	Dimension(O.D×W×I.D)	mm	355x50x127
	Spindle speed (50/60Hz)	r.p.m.	1500/1800
Motor	Spindle motor		7.5(11)kW/10(15)HP
	Cross servo motor		1.5kW
	Vertical servo motor		0.75kW
	Belt-drive servo motor		3.5kW
Weight	Net weight	kg	5800
	Gross weight	kg	6900
Machine Size	Dimension(L×W×H)	m	4.05x3.175x2.9

- Since we subscribe to a process of continuous improvement for our products, specifications are subject to change without notice.
- Machine appearance will change depending upon different optional equipment selected.
- Equipment marked with ( ) is available at additional extra charge. Other special applications may be provided upon specific requests from customers. Please contact us for more details.
- Machines are shown with optional equipments.

# OVER ARM SERIES



PSGO - 75150AHR

• Machines are shown with optional equipments.

SPECIFICATION / MODELS		PSGO			
		60150AHR	75150AHR	75220AHR	75300AHR
General Capacity	Max.travel(cross×longitudinal) mm	660x1650	810x1650	810x2350	810x3150
	Spindle center height from table mm	700(950)			
	Max. height from table top to bottom of standard wheel mm	522			
	Grinding surface of table mm	600x1500	750x1500	750x2200	750x3000
Longitudinal Movement	Hydraulic table speed (60Hz) m/min	1-25			
	Intermittent cross feed-approx. (Electro-mechanical) mm/feed	0.1-15			
Cross Movement	Continuous cross feed-approx. (Electro-mechanical) mm/min	2000			
	Hand feed per revolution mm	5			
	Hand feed per division mm	0.02			
	Rapid traverse approx.(option) mm/min	200			
Vertical Downfeed	Hand feed per revolution mm	0.25			
	Hand feed per division mm	0.0025			
Grinding Wheel	Dimension(O.D×W×I.D) mm	355x50x127			
	Spindle speed (50/60Hz) r.p.m.	1500/1800			
Motor	Spindle motor	7.5(11)kW / 10(15)HP			
	Hydraulic motor	5.6kW / 7.5HP			
Weight	Net weight kg	9350	11000	12500	14400
	Gross weight kg	10800	12300	14000	16000
Machine Size	Dimension(L×W×H) m	5.1x2.5x2.6	5.1x2.5x2.6	6.6x2.5x2.6	8.4x2.5x2.6

- Since we subscribe to a process of continuous improvement for our products, specifications are subject to change without notice.
- Machine appearance will change depending upon different optional equipment selected.
- Equipment marked with ( ) is available at additional extra charge. Other special applications may be provided upon specific requests from customers. Please contact us for more details.
- Machines are shown with optional equipments.

# DOUBLE COLUMN PLANER SERIES



PSGP - 1020AHR

• Machines are shown with optional equipments.

SPECIFICATION / MODELS		PSGP				
		1015AHR	1020AHR	1025AHR	1030AHR	1040AHR
General Capacity	Max.travel(cross×longitudinal) mm	1200x1650	1200x2150	1200x2650	1200x3150	1200x4150
	Wheel bottom to table (Vertical head) mm	0-750				
	Spindle center height from table mm	approx. 1100				
	Max. height from table top to bottom of standard wheel mm	845				
	Grinding surface of table mm	1000x1500	1000x2000	1000x2500	1000x3000	1000x4000
Longitudinal Movement	Hydraulic table speed (60Hz) m/min	2-25(1-25)				
Cross Movement	Clearance between the columns mm	1200				
	Intermittent cross feed-approx. (Electro-mechanical) mm/feed	0.1-35				
	Continuous cross feed-approx. (Electro-mechanical) mm/min	2000				
	Hand feed per revolution mm	5				10
	Hand feed per division mm	0.02				0.05
Vertical Downfeed	Rapid traverse approx.(option) mm/min	220				
	MPG feed per revolution	0.1mmx1/x5/x10				
	MPG feed per division	0.001mmx1/x5/x10				
Grinding Wheel	Dimension(O.D×W×I.D) mm	510x100x203.2				
	Spindle speed r.p.m.	1150				
Motor	Horizontal head spindle motor	11(15,18.5)kW/15(20, 25)HP				
	Vertical head spindle motor	7.5kW/10HP				
	Hydraulic motor	7.5kW/10HP				11kW/15HP
Weight	Net weight kg	10000	13500	17500	22000	36500
	Gross weight kg	13000	17000	21500	26500	41000
Machine Size	Dimension(L×W×H) m	5.1x2.9x3.4	6.2x2.9x3.4	7.3x2.9x3.4	8.4x2.9x3.4	11.2x2.9x3.5

- Since we subscribe to a process of continuous improvement for our products, specifications are subject to change without notice.
- Machine appearance will change depending upon different optional equipment selected.
- Equipment marked with ( ) is available at additional extra charge. Other special applications may be provided upon specific requests from customers. Please contact us for more details.
- Machines are shown with optional equipments.

# DOUBLE COLUMN PLANER SERIES



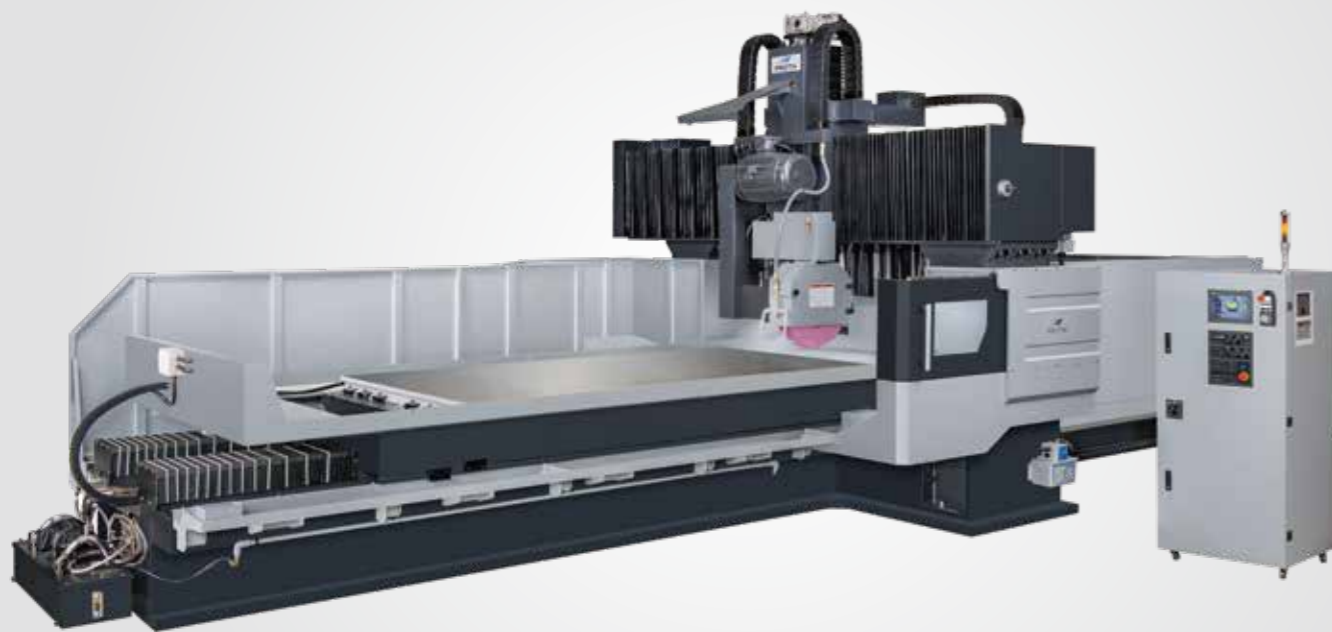
PSGP - 1225AHR

•Machines are shown with optional equipments.

SPECIFICATION / MODELS		PSGP					
		1215AHR	1220AHR	1225AHR	1230AHR	1240AHR	
General Capacity	Max.travel(cross×longitudinal)	mm	1400x1650	1400x2150	1400x2650	1400x3150	1400x4150
	Wheel bottom to table (Vertical head)	mm	0-750				
	Spindle center height from table	mm	approx. 1100				
	Max. height from table top to bottom of standard wheel	mm	845				
	Grinding surface of table	mm	1200x1500	1200x2000	1200x2500	1200x3000	1200x4000
Longitudinal Movement	Hydraulic table speed (60Hz)	m/min	2-25(1-25)				
Cross Movement	Clearance between the columns	mm	1400				
	Intermittent cross feed-approx. (Electro-mechanical)	mm/feed	0.1-35				
	Continuous cross feed-approx. (Electro-mechanical)	mm/min	2000				
	Hand feed per revolution	mm	5				10
	Hand feed per division	mm	0.02				0.05
Vertical Downfeed	Rapid traverse approx.(option)	mm/min	220				
	MPG feed per revolution		0.1mmx1/x5/x10				
	MPG feed per division		0.001mmx1/x5/x10				
Grinding Wheel	Dimension(O.D×W×I.D)	mm	510x100x203.2				
	Spindle speed	r.p.m.	1150				
Motor	Horizontal head spindle motor		11(15,18.5)kW/15(20,25)HP				
	Vertical head spindle motor		7.5kW/10HP				
	Hydraulic motor		7.5kW/10HP				13kW/17.5HP
Weight	Net weight	kg	14000	14500	18500	23000	37500
	Gross weight	kg	17000	18000	22500	27500	41000
Machine Size	Dimension(L×W×H)	m	5.4x2.9x3.4	6.2x2.9x3.4	7.3x2.9x3.4	8.4x2.9x3.4	11.2x2.9x3.5

- Since we subscribe to a process of continuous improvement for our products, specifications are subject to change without notice.
- Machine appearance will change depending upon different optional equipment selected.
- Equipment marked with ( ) is available at additional extra charge. Other special applications may be provided upon specific requests from customers. Please contact us for more details.
- Machines are shown with optional equipments.

# DOUBLE COLUMN PLANER SERIES



PSGP - 1530AHR

•Machines are shown with optional equipments.

SPECIFICATION / MODELS		PSGP					
		1522AHR	1530AHR	1540AHR	1550AHR	1560AHR	
General Capacity	Max.travel(cross×longitudinal)	mm	1900x2350	1900x3150	1900x4150	1900x5150	1900x6150
	Wheel bottom to table (Vertical head)	mm	100-800(350-1000)				
	Spindle center height from table	mm	approx. 1100(1350)				
	Max. height from table top to bottom of standard wheel	mm	845				
	Grinding surface of table	mm	1500x2200	1500x3000	1500x4000	1500x5000	1500x6000
Longitudinal Movement	Hydraulic table speed (60Hz)	m/min	2-25(1-25)				
Cross Movement	Clearance between the columns	mm	2000				
	Intermittent cross feed-approx. (Electro-mechanical)	mm/feed	0.1-35				
	Continuous cross feed-approx. (Electro-mechanical)	mm/min	2000				
	Hand feed per revolution	mm	10				
	Hand feed per division	mm	0.05				
Vertical Downfeed	Rapid traverse approx.(option)	mm/min	220				
	MPG feed per revolution		0.1mmx1/x5/x10				
	MPG feed per division		0.001mmx1/x5/x10				
Grinding Wheel	Dimension(O.D×W×I.D)	mm	510x100x203.2				
	Spindle speed	r.p.m.	1150				
Motor	Horizontal head spindle motor		11(15,18.5)kW/15(20,25)HP				
	Vertical head spindle motor		7.5kW/10HP				
	Hydraulic motor		13kW/17.5HP		15kW/20HP	20.5kW/27.5HP	22.5kW/30HP
Weight	Net weight	kg	34000	39000	45000	50000	56000
	Gross weight	kg	37000	43000	49500	55000	62000
Machine Size	Dimension(L×W×H)	m	6.6x3.5x3.8	8.4x3.5x3.8	11.2x3.5x3.8	13.4x3.5x3.8	15.6x3.5x3.8

- Since we subscribe to a process of continuous improvement for our products, specifications are subject to change without notice.
- Machine appearance will change depending upon different optional equipment selected.
- Equipment marked with ( ) is available at additional extra charge. Other special applications may be provided upon specific requests from customers. Please contact us for more details.
- Machines are shown with optional equipments.

# ROTARY SERIES



PSRC - 600S



PSRC - 1000S

•Machines are shown with optional equipments.

SPECIFICATION / MODELS		PSRC				
		500S	600S	800S	1000S	
General Capacity	Max. grinding radius	mm	290	340	450	550
	Spindle center height from table	mm	500			
	Max. height from table top to bottom of standard wheel	mm	322			
	Table diameter	mm	500	600	800	1000
Rotary Table	Max.speed	r.p.m.	10-60(Hyd. Table 10-80)		10-60	
	Table motor		1.5kW/2HP(Hyd. Table 2kW)		3.5kW	
Cross Movement	Continuous cross feed	mm/min	2000			
	MPG feed per revolution		0.1mmx1/x5/x10			
	MPG feed per division		0.001mmx1/x5/x10			
Vertical Downfeed	Rapid traverse approx.(option)	mm/min	400			
	MPG feed per revolution		0.1mmx1/x5/x10			
	MPG feed per division		0.001mmx1/x5/x10			
Grinding Wheel	Dimension(O.D×W×L.D)	mm	355x50x127			
	Spindle speed (50/60Hz)	r.p.m.	1500/1800			
Motor	Spindle motor		7.5kW/10HP		7.5kW/10HP(11kW/15HP)	
	Net weight	kg	4500	5000	6500	7000
Weight	Gross weight	kg	5500	6000	8000	8500
	Machine Size	Dimension(L×W×H)	2.5x1.9x2.6		4.1x2.2x2.5	

- Since we subscribe to a process of continuous improvement for our products, specifications are subject to change without notice.
- Machine appearance will change depending upon different optional equipment selected.
- Equipment marked with ( ) is available at additional extra charge. Other special applications may be provided upon specific requests from customers. Please contact us for more details.
- Machines are shown with optional equipments.

# DOUBLE COLUMN ROTARY PLANER SERIES



PSRP - 1000S

•Machines are shown with optional equipments.

SPECIFICATION / MODELS		PSRP			
		1000S	1200S	1500S	
General Capacity	Max. grinding radius	mm	600	700	800
	Vertical grinding diameter	mm	Ø200-Ø1000	Ø200-Ø1200	Ø200-Ø1500
	Spindle center height from table	mm	900(1100)		
	Max. height from table top to bottom of standard wheel	mm	645		
Rotary Table	Table diameter	mm	1100	1300	1500
	Max.speed	r.p.m.	10-60		
Cross Movement	Table motor		3.75kW/5HP		
	Continuous cross feed	mm/min	2000		
	MPG feed per revolution		0.1mmx1/x5/x10		
Vertical Downfeed	MPG feed per division		0.001mmx1/x5/x10		
	Rapid traverse approx.(option)	mm/min	400		
	MPG feed per revolution		0.1mmx1/x5/x10		
Grinding Wheel	MPG feed per division		0.001mmx1/x5/x10		
	Dimension(O.D×W×L.D)	mm	510x100x203.2		
Motor	Spindle speed (50/60Hz)	r.p.m.	1150		
	Spindle motor		11(15)kW/15(20)HP		
Weight	Vertical head spindle motor		7.5kW/10HP		
	Net weight	kg	15000	16000	18000
Machine Size	Gross weight	kg	16500	18000	21000
	Machine Size	Dimension(L×W×H)	3x4.2x3.8		

- Since we subscribe to a process of continuous improvement for our products, specifications are subject to change without notice.
- Machine appearance will change depending upon different optional equipment selected.
- Equipment marked with ( ) is available at additional extra charge. Other special applications may be provided upon specific requests from customers. Please contact us for more details.
- Machines are shown with optional equipments.