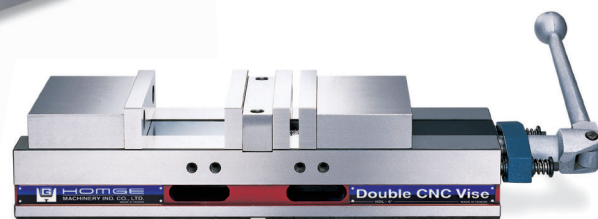
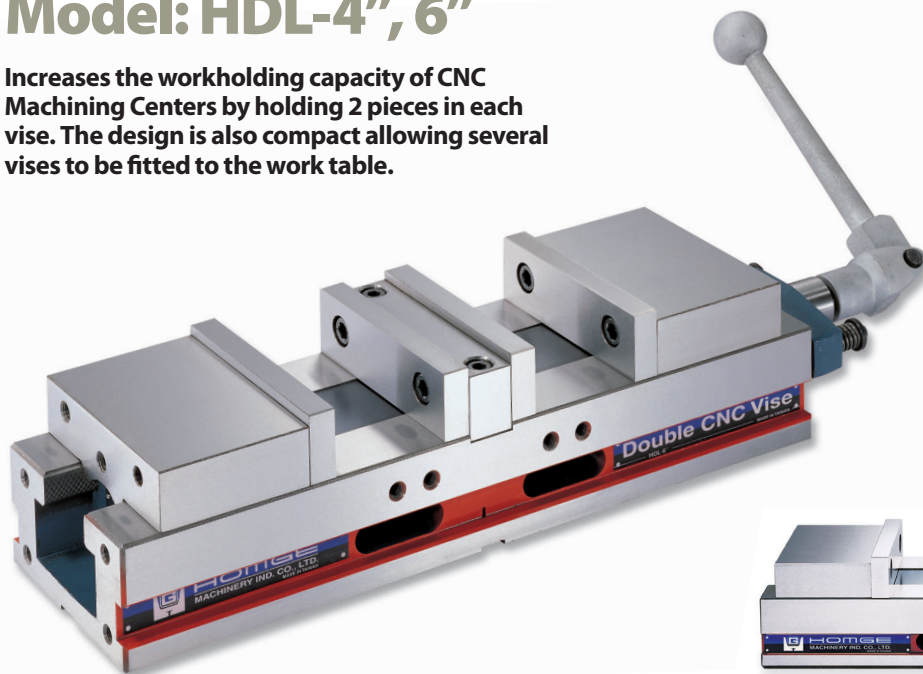


# DOUBLE CNC PRECISION VISE

## Model: HDL-4", 6"

**PATENTED**  
1 2 6 2 1 9  
M307481

Increases the workholding capacity of CNC Machining Centers by holding 2 pieces in each vise. The design is also compact allowing several vises to be fitted to the work table.



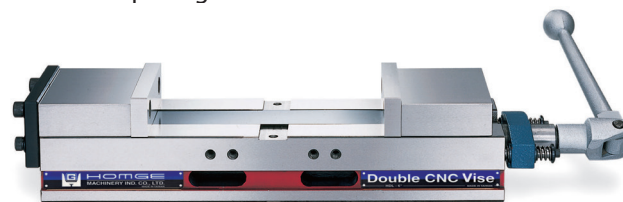
The vise can hold 2 workpieces of different sizes. The maximum opening difference is **70mm**.

### STANDARD ACCESSORIES:

- 2 pcs of Alignment Wedge
- 4 pcs of Clamp
- 1 pc of Handle

### OPTIONAL ACCESSORY:

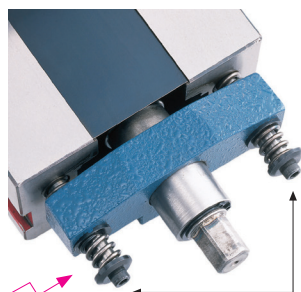
- Soft Jaws (4 pcs / per set)



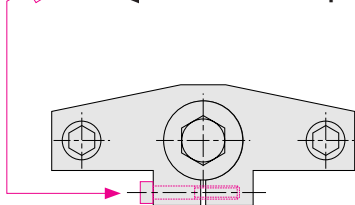
Centre Jaw maybe removed to hold larger workpieces.



Once the centering Jaw is removed the vise is self centring.

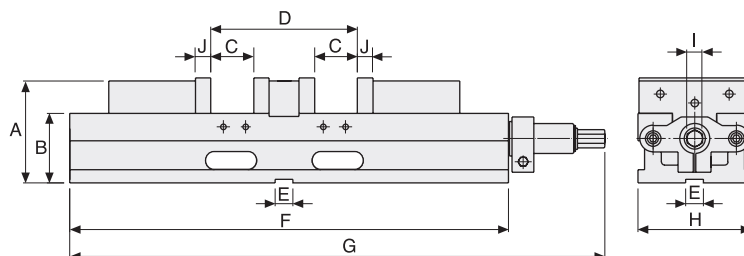


A special **SPRING DEVICE** allows an extra tolerance of up to **5mm** in workpiece size enabling quick positioning and clamping.



If the tolerance of work-piece is more than 5mm, please adjust this screw.

### DIMENSIONS



### SPECIFICATIONS (Material: FCD 55 Ductile Iron. Hardness: HRC 50°)

Unit: mm

Model	A	B	C	D	E	F	G	H	I	J	Weight (kg)
HDL-4"	92	63 ± 0.01	74	200	18	395	480	104	14	14	20
HDL-6"	118	80 ± 0.01	100	270	18	517	615	154	19	18	46