

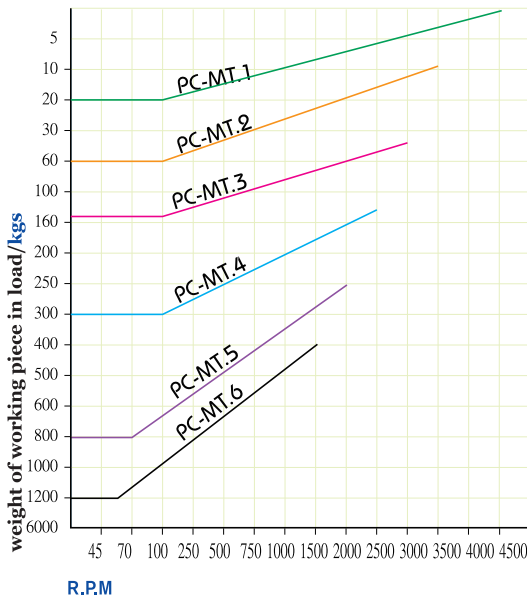
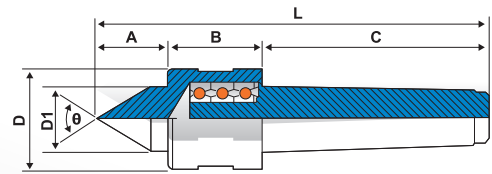
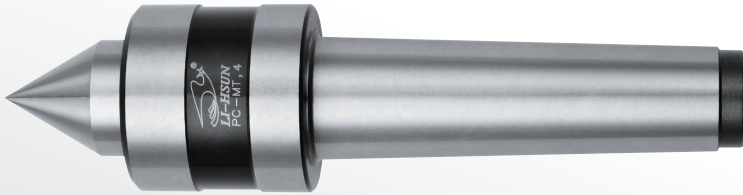
# 普通型頂針

## NORMAL TYPE

RPM: 2000 - 4500 MT/MK. 1, 2, 3, 4, 5

www.lihsun.com

# PC 型 LIVE CENTER



1. 此頂針使用鉻鉬鋼之材質，經適當熱處理為 (HRC58° ~ 60°) 具高鋼性。
2. 此頂針為滾珠軸承之組合。
3. 適用於中、高速車床及輕負載之使用。
4. 車床尾座調整壓力建議 5~8 公斤。

1. Center is made of Cr-Mo steel and hardened to HRC 58° ~ 60°.
2. Center is assembled with ball bearings.
3. Applicable to medium and high speed lathes with light duty.
4. The tailstock pressure of lathe adjusts to five to eight kilograms (for reference)

單位/Unit:mm

ORDER NO.	MORES TAPER MT/MK	A	B	C	D	D1	L	Co精度 Accuracy	Max R.P.M	θ	G.W. weight kgs	包裝尺寸 L x W x H
08080001	PC-MT.1	21	31	56	32	16	108	0.005	4500R.P.M	60°	0.22 kgs	110 x 40 x 40
08080002	PC-MT.2	26	37	69	40	22	132	0.005	3500R.P.M	60°	0.42 kgs	140 x 50 x 50
08080003	PC-MT.3	32	46	86	45	26	164	0.005	3000R.P.M	60°	0.82 kgs	170 x 50 x 50
08080004	PC-MT.4	34	46	108	48	30	188	0.005	2500R.P.M	60°	1.30 kgs	205 x 60 x 60
08080005	PC-MT.5	50	62	136	68	45	248	0.005	2000R.P.M	60°	3.20 kgs	260 x 80 x 80
08080006	PC-MT.6	65	82	190	102	55	337	0.008	1500R.P.M	60°	9.95 kgs	370 x 140 x 130