

外徑牙刀

Toolholders for Threading

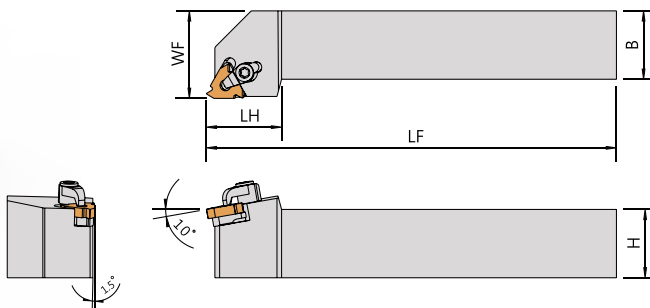
內孔牙刀

Boring Bars for Threading



Since 1976





▼ Clamp Type:

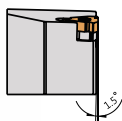
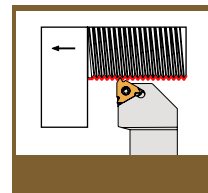
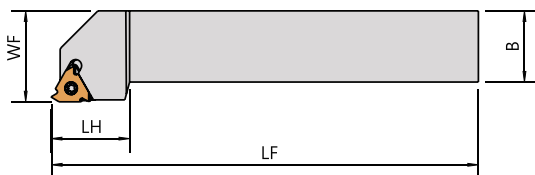
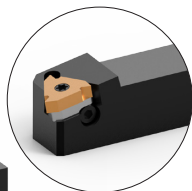
Order No.	Insert	Dimensions(mm)					Parts				Wrench	
		柄高 H	柄寬 B	長度 LF	頭長 LH	工作寬度 WF	Shim R	Shim L				
CER/L1616H16	16ER/L	16	16	100	22	20	AE16	AI16	CSF3008	SP-CP16S	FT-15	LW020
CER/L2020K16		20	20	125	22	25	AE16	AI16	CSF3008	SP-CP16S	FT-15	LW020
CER/L2525M16		25	25	150	25	32	AE16	AI16	CSF3008	SP-CP16S	FT-15	LW020
CER/L3232P16		32	32	170	32	40	AE16	AI16	CSF3008	SP-CP16S	FT-15	LW020
CER/L2020K22	22ER/L	20	20	125	22	25	AIE22	AIE22	CSF3008	SP-CP22S	FT-15	LW020
CER/L2525M22		25	25	150	25	32	AIE22	AIE22	CSF3008	SP-CP22S	FT-15	LW020
CER/L3232P22		32	32	170	34	40	AIE22	AIE22	CSF3008	SP-CP22S	FT-15	LW020
CER/L2525M27	27ER/L	25	25	150	25	32	AE27	AI27	CSF4010	SP-CP27S	LW040	LW025
CER/L3232P27		32	32	170	34	40	AE27	AI27	CSF4010	SP-CP27S	LW040	LW025
CER/L4040S27		40	40	250	42	50	AE27	AI27	CSF4010	SP-CP27S	LW040	LW025

ER/IL: Right hand insert 右手刀片

IR/EL : Left hand insert 左手刀片



SER/L1010H16N



▼Screw Type:

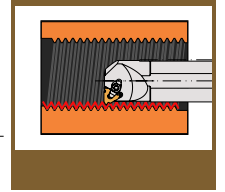
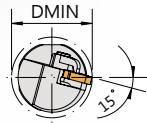
Order No.	Insert	Dimensions(mm)					Parts				Wrench	
		柄高 H	柄寬 B	長度 LF	頭長 LH	工作寬度 WF	Shim R	Shim L	T	CS	Wrench	Wrench
SER/L1010H11	11ER/L	10	10	100	20	12	-	-	-	CS25080	FT-10	-
SER/L1212H11		12	12	100	20	16	-	-	-			-
SER/L1616H11		16	16	100	20	20	-	-	-			-
SER/L2020H11		20	20	100	20	25	-	-	-			-
SER/L1010H16N	16ER/L	10	10	100	20	10	AE16	AI16	CSH0306	CS35117S	FT-15	LW025
SER/L1212H16N		12	12	100	20	12						
SER/L1616H16N		16	16	100	22	16						
SER/L1616H16		16	16	100	22	20						
SER/L2020K16		20	20	125	25	25						
SER/L2525M16		25	25	150	25	32						
SER/L3232P16		32	32	170	32	40						
SER/L4040R16		40	40	200	32	50						
SER/L2020K22	22ER/L	20	20	125	25	25	AE22	AI22	CSH0408	CS40145	FT-15	LW030
SER/L2525M22		25	25	150	29	32						
SER/L3232P22		32	32	170	32	40						
SER/L4040R22		40	40	200	32	50						

ER/IL: Right hand insert 右手刀片

IR/EL : Left hand insert 左手刀片



CNR



▼ Clamp Type:

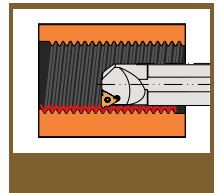
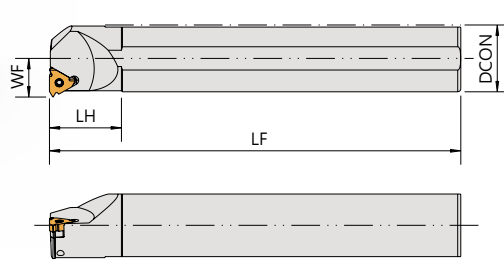
Order No.	Insert	Dimensions(mm)					Parts				Wrench	
		柄徑 DCON	工作寬度 WF	長度 LF	最小加工徑 DMIM	頭長 LH						
CNR/L3025S-22	22 IR/L	25	16	200	30	35	AIE22	AIE22	CSF3008	SP-CP22S	FT-15	LW020
CNR/L3732S-22		32	19.5	250	37	35	AIE22	AIE22	CSF3008	SP-CP22S	FT-15	LW020
CNR/L4440S-22		40	24.5	300	45	35	AIE22	AIE22	CSF3008	SP-CP22S	FT-15	LW020
CNR/L5450S-22		50	30.5	350	56	35	AIE22	AIE22	CSF3008	SP-CP22S	FT-15	LW020
CNR/L3732S-27	27 IR/L	32	20	250	37	35	AI27	AE27	CSF4010	SP-CP27S	LW040	LW025
CNR/L4440S-27		40	25	300	46	35	AI27	AE27	CSF4010	SP-CP27S	LW040	LW025
CNR/L5450S-27		50	31.5	350	58	35	AI27	AE27	CSF4010	SP-CP27S	LW040	LW025

ER/IL: Left hand insert 左手刀片

IR/EL : Right hand insert 右手刀片



Boring Bars for Threading 内孔牙刀

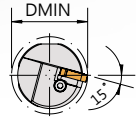


C-Carbide shank 鑄鋼柄

H-Anti-vibration shank 抗震柄

V-Anti-vibration shank with coolant 抗震水孔柄

▼Screw Type:



Order No.	Insert	Dimensions(mm)					Parts				Wrench		
Right / Left		柄徑	工作寬度	長度	最小加工徑	頭長							
		DCON	WF	LF	DMIN	LH	Shim R	Shim L					
SIR/L1010-11	11IR/L	10	5.2	150	10	25	-	-	-	CS25059	FT-8	-	
SIR/L1012-11		12	5.2	150	10	25	-	-	-			-	
SIR/L1210-11		10	6.3	150	12	25	-	-	-			-	
SIR/L1412-11		12	7.5	150	14	25	-	-	-			-	
SIR/L1216-11		16	6.3	150	12	25	-	-	-			-	
SIR/L1516-11		16	7.5	150	15	25	-	-	-			-	
SIR/L1516-16	16IR/L	16	8.2	150	15	35	-	-	-	CS35090	FT-15	-	
SIR/L2016-16		16	10	150	20	35	-	-	-			-	
SIR/L2420S-16		20	12	180	24	35	Al16	AE16	CSH0306			CS35117S	LW025
SIR/L3025S-16		25	15	200	30	35							LW025
SIR/L3732S-16		32	18.5	250	37	35							LW025
SIR/L4440S-16		40	22.5	300	44	35							LW025
SIR/L5550S-16	50	28.5	350	55	35	LW025							
SIR/L6660S-16	60	33.5	400	66	40	LW025							
SIR/L2420-22	22IR/L	20	13	180	24	35	-	-	-	CS40145	FT-15	-	
SIR/L3025S-22		25	16	200	30	35	Al22	AE22	CSH0408			LW030	
SIR/L3732S-22		32	19.5	250	37	35						LW030	
SIR/L4440S-22		40	24.5	300	44	35						LW030	
SIR/L5550S-22		50	30.5	350	55	35						LW030	
SIR/L6660S-22		60	35.5	400	66	40						LW030	
SIR/L5550S-27	27IR/L	50	31.5	350	58	35				Al27	AE27		CSF5020
SIR/L6660S-27		60	36.5	400	68	40	-	LW030					
H05H-SIR06-06	06IR	5	3.5	100	6	10	-	-	-	CS20038	FT-6	-	
H06H-SIR06-07		6	4.4	100	7.5	12	-	-	-			-	
H08K-SIR08-09	08IR	8	5.3	125	9.5	15	-	-	-	CS20045	FT-6	-	
H10K-SIR11-12	11IR	10	6.7	125	12	18	-	-	-	CS25059	FT-8	-	
C06H-SIR06-07	06IR	6	4.4	100	7.5	12	-	-	-	CS20038	FT-6	-	
C08K-SIR08-09	08IR	8	5.3	125	9.5	15	-	-	-	CS20045		-	
C10M-SIR11-12	11IR	10	6.3	150	12	18	-	-	-	CS25059	FT-8	-	
C12Q-SIR11-14		12	7.7	180	14	25	-	-	-			-	
C16R-SIR16-20	16IR	16	10	200	20	35	-	-	-	CS35090	FT-15	-	

ER/IL: Left hand insert 左手刀片

IR/EL: Right hand insert 右手刀片